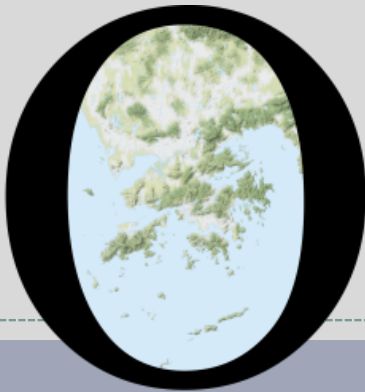


POP



HONG KONG PUBLIC OPINION PROGRAM

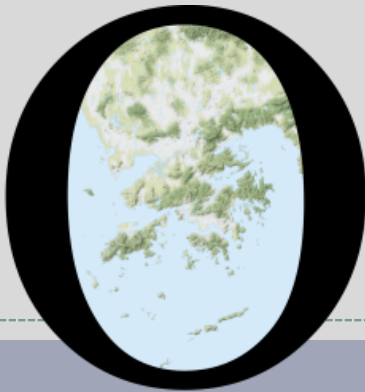
HONG KONG PUBLIC OPINION RESEARCH INSTITUTE

香港民意研究所 之 香港民意研究計劃

Latest Tracking Poll Results

March 1, 2022

POP



HONG KONG PUBLIC OPINION PROGRAM

HONG KONG PUBLIC OPINION RESEARCH INSTITUTE

香港民意研究所 之 香港民意研究計劃

限聚指數

Group Gathering Prohibition Index

1/3/2022

樣本資料 - 限聚指數基準調查

Contact Information - Group Gathering Prohibition Index Benchmark Survey

3

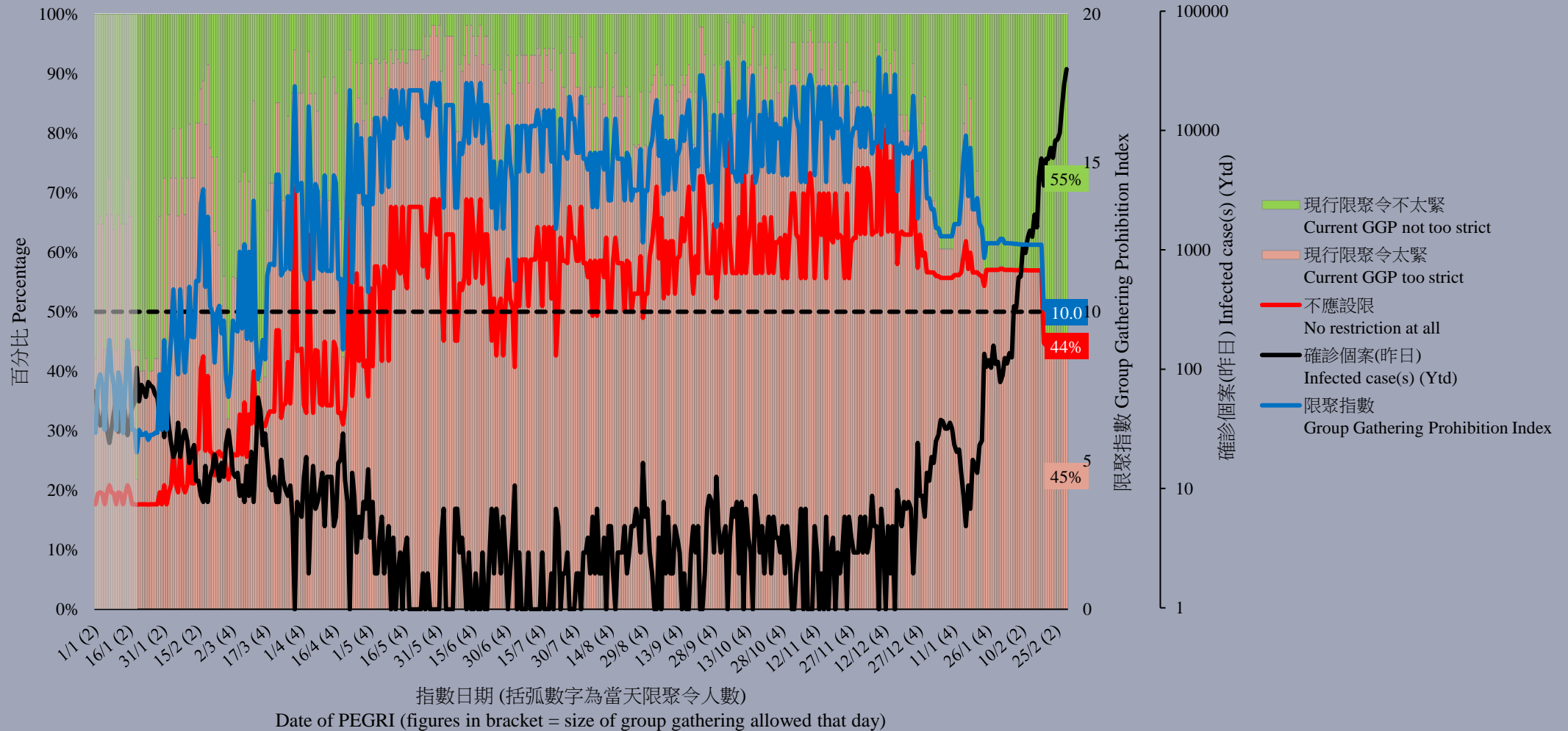
	香港民研意見群組成員 HKPOP Panel
調查日期 Survey date	14/2 15:00 – 18/2 19:00
調查方法 Survey method	以電郵接觸群組成員，並於網上完成調查 Online survey
訪問對象 Target population	十二歲或以上的香港市民 Hong Kong residents aged 12+
總成功樣本 Total sample size	4,984
回應比率 Response rate	5.7%
抽樣誤差 Sampling error	95% 置信水平，百分比誤差 +/-1% Sampling error of percentages at +/-1% at 95% confidence level
加權方法 Weighting method	按照1) 政府統計處提供的全港人口年齡及性別分佈、教育程度（最高就讀程度）及經濟活動身分統計數字；2) 常規調查中的政治狀況評價及政治取向分佈，以「反覆多重加權法」作出調整。 Rim-weighted according to 1) gender-age distribution, educational attainment (highest level attended) distribution and economic activity status distribution of Hong Kong population from Census and Statistics Department; 2) appraisal of political condition and political inclination distribution from regular tracking surveys.

調查結果 - 限聚接受程度

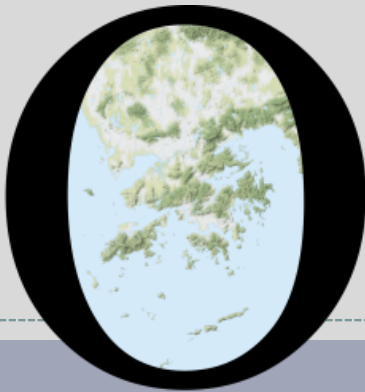
Survey Result – Group Gathering Prohibition Acceptance Level

5

限聚接受程度 Group Gathering Prohibition Acceptance Level



POP



HONG KONG PUBLIC OPINION PROGRAM

HONG KONG PUBLIC OPINION RESEARCH INSTITUTE

香港民意研究所 之 香港民意研究計劃

Latest Tracking Poll Results

March 1, 2022

Contact Information

- Date of survey: 21-24/2/2022
- Survey method: Random telephone survey conducted by real interviewers
- Target population: Cantonese-speaking Hong Kong residents aged 18 or above
- Sample size: 1,002 (including 505 landline and 497 mobile samples)
- Effective response rate: 49.7%
- Sampling error: Sampling error of percentages not more than +/-4%, that of net values not more than +/-8% and that of ratings not more than +/-0.1 at 95% conf. level
- Weighting method: Rim-weighted according to figures provided by the Census and Statistics Department. The gender-age distribution of the Hong Kong population came from “Mid-year population for 2020”, while the educational attainment (highest level attended) distribution and economic activity status distribution came from “Women and Men in Hong Kong - Key Statistics (2020 Edition)”.

Survey Topic

9

- **Popularity of HKSAR Government**
 - People's satisfaction with the HKSAR Government
 - People's trust in the HKSAR Government
 - People's appraisals of society's conditions
- **Public Sentiment Index**
- **Trust and Confidence Indicators**
 - People's trust in the HKSAR, Beijing Central and Taiwan Governments
 - People's confidence in the future and in “one country, two systems”

Survey Result - Popularity of HKSAR Government

10

● People's satisfaction with the HKSAR Government

	17-20/1/2022	21-24/2/2022	Change	Record
Satisfaction rate	20%	16%	▼4%	Record low since Feb. 2020
Dissatisfaction rate	60%	64%	▲4%	Record high since Oct. 2020
Net satisfaction rate	-39%	-48%	▼8%	Record low since Oct. 2020
Mean value	2.2	2.1	▼0.1	Record low since Jun. 2021

- Regarding the HKSAR Government, the latest satisfaction rate is 16%, whereas dissatisfaction rate stands at 64%, thus the net satisfaction is negative 48 percentage points, which has dropped by 8 percentage points from a month ago and registered a record **low** since October 2020, yet the change is within sampling error. The mean score is 2.1, meaning close to “quite dissatisfied” in general.

Survey Result - Popularity of HKSAR Government

11

● People's trust in the HKSAR Government

	17-20/1/2022	21-24/2/2022	Change	Record
Trust	36%	30%	▼6% *	Record low since Jan. 2021
Distrust	49%	48%	▼1%	Record low since Nov. 2021
Net trust	-13%	-18%	▼5%	Record low since Jun. 2021
Mean value	2.6	2.5	▼0.1	Record low since Jun. 2021

- Regarding people's trust in the HKSAR Government, 30% of the respondents expressed trust, 48% expressed distrust, thus the net trust value is negative 18 percentage points. The mean score is 2.5, meaning between “quite distrust” and “half-half” in general.

Survey Result - Popularity of HKSAR Government

12

● Net satisfaction rates of society's conditions

	17-20/1/2022	21-24/2/2022	Change	Record
Political condition	-29%	-36%	▼7% *	Record low since Jun. 2021
Livelihood condition	-37%	-51%	▼15% *	Record low since Oct. 2020
Economic condition	-45%	-55%	▼11% *	Record low since Feb. 2021

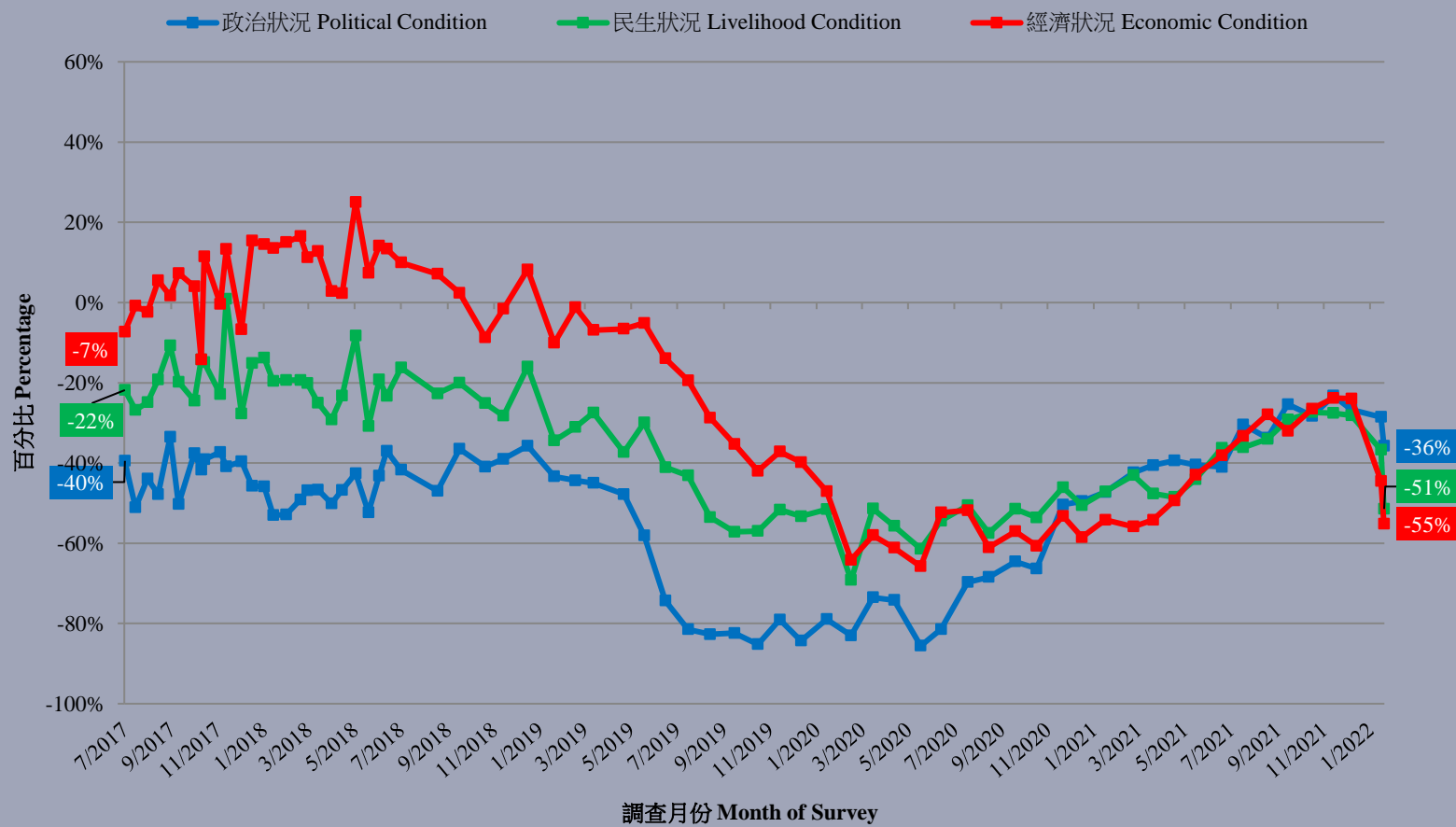
- As for people's satisfaction with the current political, livelihood and economic conditions, the latest net satisfaction rates are negative 36, negative 51 and negative 55 percentage points respectively. The net satisfaction rates of all conditions have **dropped significantly** compared to a month ago. The drop registered for the livelihood condition was as large as 15 percentage points, registering a record **low** since October 2020, while the net satisfaction rate of economic condition has registered a record **low** since February 2021.

* Significant change

Survey Result - Popularity of HKSAR Government

13

市民對社會狀況的評價滿意率淨值 (按次計算)
Net satisfaction rates of people's appraisals of society's conditions (Per Poll)
(7/2017 – 2/2022)



Survey Result - Public Sentiment Index

15

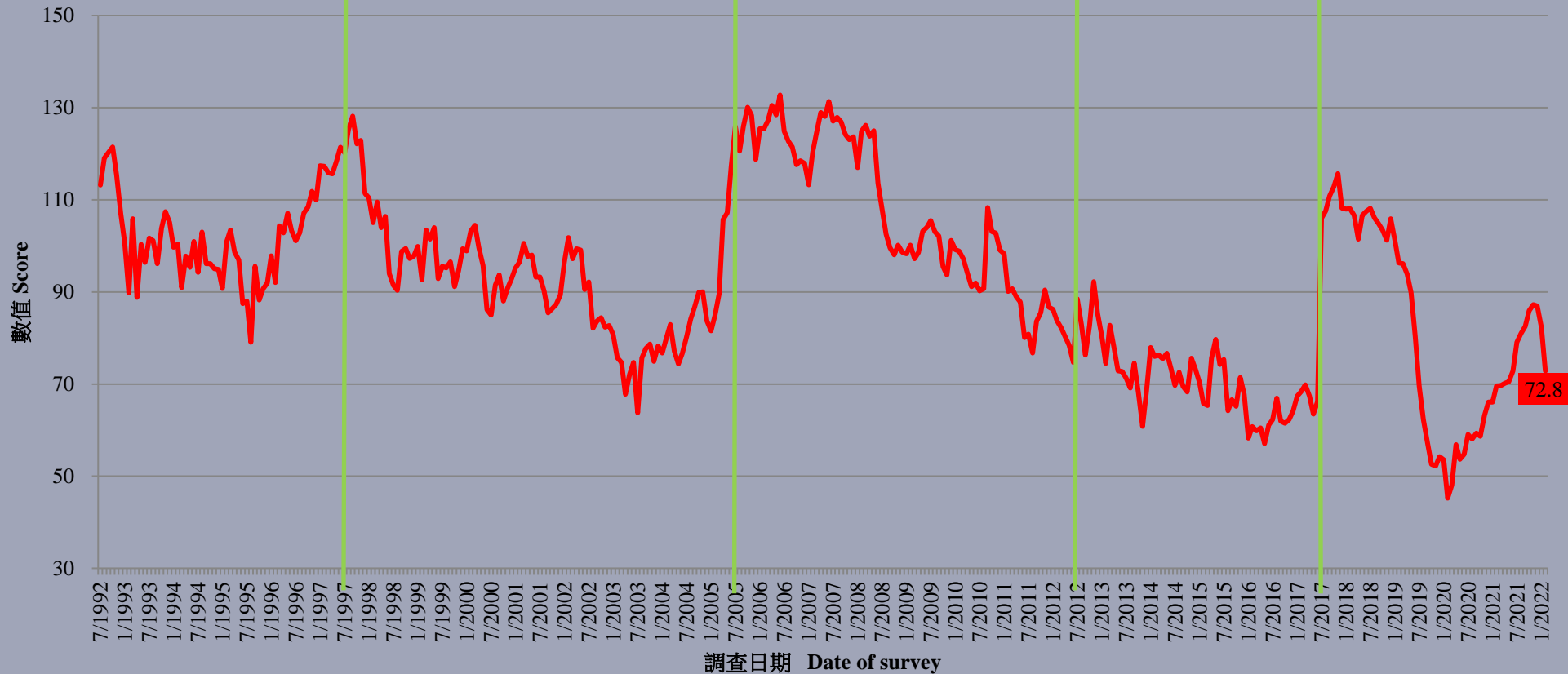
● Public Sentiment Index (PSI)

	10/2/2022	24/2/2022	Change	Record
Public Sentiment Index (PSI)	77.9	67.7	▼10.2	Record low since Feb. 2021
Government Appraisal (GA)	72.6	69.7	▼2.9	Record low since Jun. 2021
Society Appraisal (SA)	80.7	65.3	▼15.5	Record low since Jan. 2021

- All PSI, GA and SA scores range between 0 to 200, with 100 meaning normal.
- The latest PSI stands at 67.7, down by 10.2 points from early February. It can be considered as among the worst 2% across the past 20 years or so. The PSI and the SA have registered record **lows** since February 2021 and January 2021 respectively. Two component scores of PSI also can be considered as among the worst 2% and 1% across the past 20 years or so respectively.

Survey Result - Public Sentiment Index

民情指數 (按月計算)
Public Sentiment Index (monthly average)
(7/1992 - 2/2022)



Survey Result - Trust and Confidence Indicators

18

● People's trust in the Beijing Central and Taiwan Governments

	20-26/8/2021	21-24/2/2022	Change	Record
Net trust in Beijing Government	-4%	21%	▲25% *	Record high since Dec. 2009
Net trust in Taiwan Government	-20%	-18%	▲2%	Record high since Feb. 2021

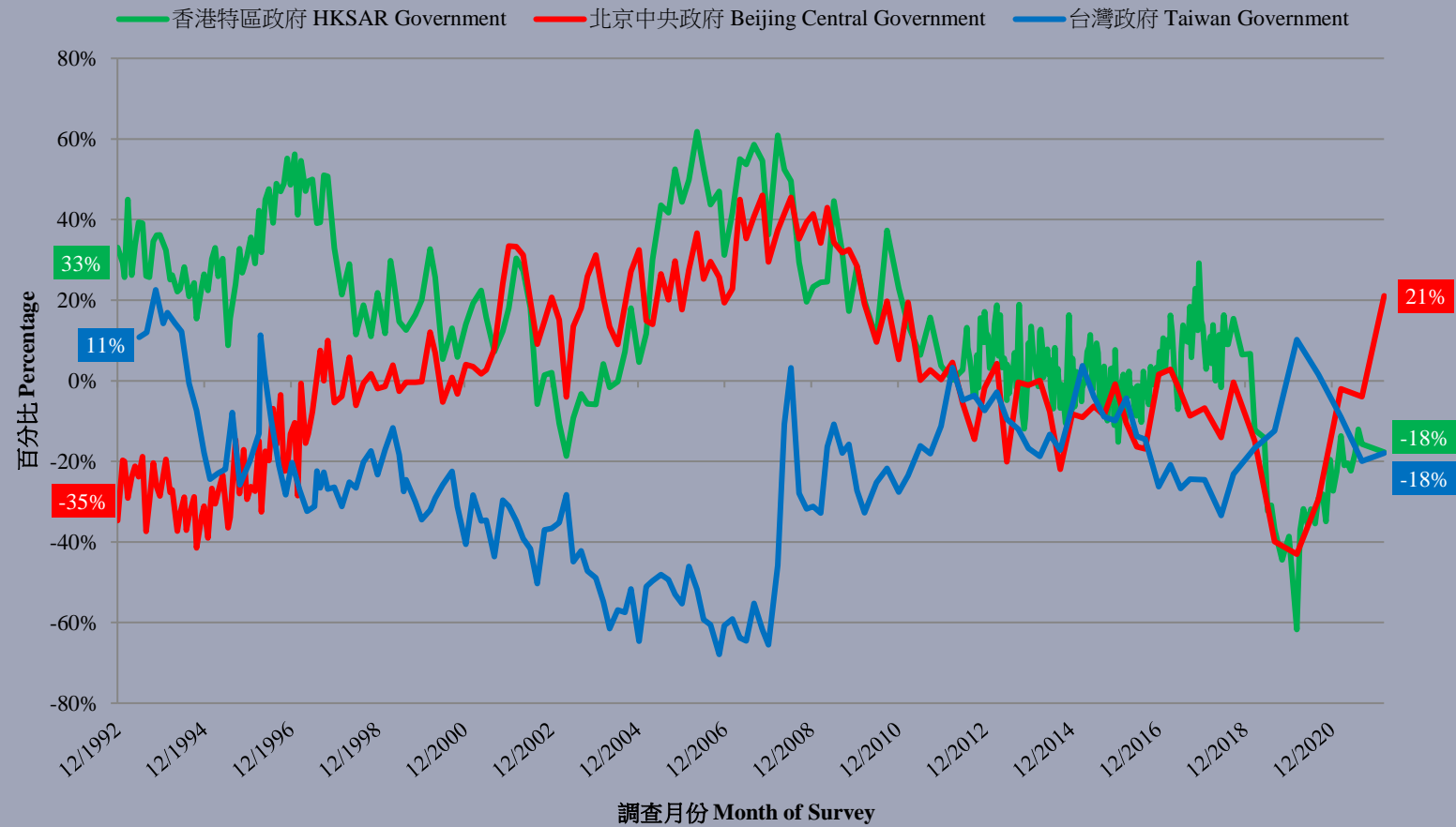
- The net trust values in the Beijing Central Government and the Taiwan Government are positive 21 and negative 18 percentage points respectively. Compared to half a year ago, net trust in the Beijing Central Government has significantly increased by 25 percentage points, registering a new record high since December 2009.

* Significant change

Survey Result - Trust and Confidence Indicators

19

市民對特區、北京中央及台灣政府的信任淨值 (按次計算)
People's net trust in the HKSAR, Beijing Central and Taiwan Governments (Per Poll)
(12/1992 – 2/2022)



Survey Result - Trust and Confidence Indicators

20

- **People’s confidence in the future and in “one country, two systems”**

	20-26/8/2021	21-24/2/2022	Change	Record
Net confidence in HK’s future	-1%	-8%	▼6%	Record low since Aug. 2020
Net confidence in China’s future	27%	41%	▲14% *	Record high since Jan. 2018
Net confidence in “one country, two systems”	-6%	-1%	▲5%	Record high since Jan. 2018

- As for the confidence indicators, the net confidence in the future of China stands at positive 41 percentage points, which has **significantly increased** by 14 percentage points, registering a new record **high** since January 2018. On the other hand, while net confidence in the future of Hong Kong and in “one country, two systems” stands at negative 8 and negative 1 percentage point respectively. The latter has registered a new record **high** since January 2018.

Survey Result - Trust and Confidence Indicators

21

市民對中港前途以及一國兩制的信心淨值 (按次計算)
People's net confidence in the future and in "one country, two systems" (Per Poll)
(6/1993 – 2/2022)

