



HONG KONG PUBLIC OPINION RESEARCH INSTITUTE
香港民意研究所

Hong Kong Public Opinion Program of Hong Kong Public Opinion Research Institute

**PopPanel Research Report No. 122 cum
Community Democracy Project Research Report No. 78
cum Community Health Project Research Report No. 74
cum “We Hongkongers” Research Report No. 83**

Survey Date: 10 to 13 January 2022

Release Date: 14 January 2022

Copyright of this report was generated by the Hong Kong Public Opinion Program (HKPOP) and opened to the world. HKPOP proactively promotes open data, open technology and the free flow of ideas, knowledge and information. The predecessor of HKPOP was the Public Opinion Programme at The University of Hong Kong (HKUPOP). “POP” in this publication may refer to HKPOP or HKUPOP as the case may be.

Research Background

"Community Health survey"

Initiated by the Hong Kong Public Opinion Research Institute (HKPORI), the "Community Integration through Cooperation and Democracy, CICD" Project (or the "Community Democracy Project") aims to provide a means for Hongkongers to re-integrate ourselves through mutual respect, rational deliberations, civilized discussions, personal empathy, social integration, and when needed, resolution of conflicts through democratic means. It is the rebuilding of our Hong Kong society starting from the community level following the spirit of science and democracy. For details, please visit: <https://www.pori.hk/research-reports-en/cicd.html?lang=en>.

The surveys of Community Democracy (CD) Project officially started on 3 January 2020, targeting members of "HKPOP Panel" established by HKPORI in July 2019, including "Hong Kong People Representative Panel" (Probability-based Panel) and "Hong Kong People Volunteer Panel" (Non-probability-based Panel). This report also represents Report No. 122 under HKPOP Panel survey series, as well as Report No. 78 under the CD Project survey series. Since CD Project aims to gauge the opinions of members in different communities, HKPORI needs to continuously recruit new panel members and map their profile with their respective constituency areas to form "HKPOP Community Panel" including "Community Representative Panel" and "Community Volunteer Panel" first, and then conduct the research.

In view of the outbreak of Novel Coronavirus (also known as "Wuhan Pneumonia") in late January 2020, HKPOP kick-started the "Community Democracy Project: Community Health Module" or "Community Health Project" using a PopPanel survey design to study the public's views on the epidemic and the Government's relevant policies using small communities such as housing estates as the unit of analysis. The survey covers people's views on their perceived chance of contracting pneumonia, appraisal on the government's handling of the disease, impacts of the border closure, calls for strike by frontline medical staff, community outbreak, work-from-home arrangement, immigration controls, general use of face masks as well as the government's implementation of relevant policies. This is the Report No. 74 under the Community Health Project survey series. The special feature of the Community Health Project is the lowering of respondents' age bracket to 12 years old, in order to obtain more comprehensive samples.

HKPOP sent out emails to all panel members at the beginning of the survey, inviting them to fill in the questionnaire at the designated online platform. Members were allowed to make repeated submissions, while only the last submission of each individual member would be used for analysis.

We Hongkongers" Panel Survey

"We Hongkongers" is an initiative advocated by Hong Kong Public Opinion Program (HKPOP) of Hong Kong Public Opinion Research Institute (HKPORI), with the support of many members of the civic society. With reference to the petition website "We the People" hosted by the White House of the United States, "We Hongkongers" aims to reflect public sentiment by conducting scientific research on any issues raised by Hong Kong citizens: <https://www.pori.hk/research-reports-en/wehkers.html?lang=en>.

"We Hongkongers" Project officially started on 17 October 2019, in the form of intensive rolling surveys. A total of 12 reports were published as of 23 December 2019. In mid-May 2020, in response to the rapid changes in Hong Kong's political and public sentiment, HKPOP redeveloped the "We Hongkongers" Project. Coupled with the rapid development of the "HKPOP Panel" established by PORI in July 2019, PORI decided to launch the "We Hongkongers Panel Survey" to further strengthen interaction with the public and as well as collect and analyze public opinion and there are 29 reports in total. In January 2021, PORI redeveloped the "We Hongkongers" Project again to strengthen the cooperation with non-governmental organizations, civil society organizations, concern groups and professional organizations, and the results will be released in the form of mini-forums to initiate policy discussions.

This report also represents Report No. 122 under HKPOP Panel survey series, as well as Report No. 83 under the "We Hongkongers" Project Series. The theme of this report is "Anti-epidemic measures".

HKPOP sent out emails to all panel members at the beginning of the survey, inviting them to fill in the questionnaire at the designated online platform. Members were allowed to make repeated submissions, while only the last submission of each individual member would be used for analysis.

Contact Information

Herewith the contact information of the “We Hongkongers” Panel Survey:

Table 1: Detailed Contact Information

Survey method	Online survey
Target population	HKPOP Panel samples, namely Hong Kong People Representative Panel (Probability-based Panel) and Hong Kong People Volunteer Panel (Non-probability-based Panel)
Weighting method	Rim-weighted according to 1) gender-age distribution, educational attainment (highest level attended) distribution and economic activity status distribution of Hong Kong population from Census and Statistics Department; 2) appraisal of political condition and political inclination distribution from regular tracking surveys.
Date of survey	10 January, 3pm – 13 January, 3pm
Total sample size	5,969
Response rate	6.7%
Sampling error ^[1]	Sampling error of percentages at +/-1% at 95% confidence level

[1] All error figures in this release are calculated at 95% confidence level. “95% confidence level” means that if we were to repeat a certain survey 100 times with different random samples, we would expect 95 times having the population parameter within the respective error margins calculated. Because of sampling errors, when quoting percentages, journalists should refrain from reporting decimal places, whereas one decimal place can be used when quoting rating figures.

PopPanel Composition

Regarding data collection, survey data from both the Hong Kong People Representative Panel and Hong Kong People Volunteer Panel were collected in the form of online questionnaire.

Among them, the Hong Kong People Representative Panel comes from members of the “HKPOP Panel” recruited in regular random telephone surveys. HKPOP uses “HKPOP Panel” as a framework for conducting surveys for different research projects, any eligible family member in the household may be invited to participate in a specific research.

Meanwhile, members of the Hong Kong People Volunteer Panel are recruited online. Citizens only need to self-register in HKPOP website to participate in online questionnaires.

All panel data collected will be adjusted using rim-weighting, to minimize the effects of self-selection bias or participation bias. Details are documented in the Weighting Procedure section.

Response Rate

HKPOP adopts a set of contact definition in compliance with most international standards. Historically, the social research community in Hong Kong has developed its own set of contact rates, cooperation rates, response rates, and so on. HKPOP normally reports the “success rate” for online surveys.

The calculation of the success rates in this study refers to the following tables.

Table 2: Calculation of success rate of the HKPOP Panel (by HKPOP definition)

Success rate		
=	$\frac{\text{Successful cases}}{\text{Panel size of the HKPOP Panel}}$	x 100.0%
=	$\frac{5,969}{88,759}$	x 100.0%
=	6.7%	

Weighting Procedure

HKPOP has continuously adopted and enhanced its weighting method over the past few decades. For this survey, HKPOP adopts a "2 by 5 by 2 by 4 by 5 by 4" weighting procedure involving six variables, namely, gender, age, educational attainment, economic activity status, appraisal of political condition and political inclination. Basically, the raw data of practically all random telephone surveys conducted by HKPOP are rim-weighted by the figures obtained from the Hong Kong Census and Statistics Department so that the marginal distribution of the sample in terms of gender, age, educational attainment and economic activity status would match with that of the general population figures from the Hong Kong Census and Statistics Department. The marginal distribution of the sample in terms of appraisal of political condition and political inclination would match that of the general population in HKPOP's regular tracking surveys. This rim-weighting method (sometimes called raking) is found to be the most practicable method in processing HKPOP's survey data.

Specifically, the gender and age groupings used for weighting are as follows:

- Male 12-29
- Male 30-39
- Male 40-49
- Male 50-59
- Male 60 or above
- Female 12-29
- Female 30-39
- Female 40-49
- Female 50-59
- Female 60 or above

The educational attainments used for weighting are as follows:

- Secondary or below
- Tertiary or above

The economic activity statuses used for weighting are as follows:

- Working population / Others
- Home-makers / Housewives
- Students
- Retired person

The appraisals of political condition used for weighting are as follows:

- Very satisfied
- Quite satisfied
- Half-half // Don't know / hard to say // Refused to answer
- Quite dissatisfied
- Very dissatisfied

The political inclinations used for weighting are as follows:

- Pro-democracy camp
- Pro-establishment camp
- Localist
- Centrist // Other // No political inclination / politically neutral / do not belong to any camp // Don't know / hard to say // Refused to answer

Quantitative Analysis Results

“Community Health survey”

Quantitative analysis results of the “Community Health survey”, after applying the weighting procedures, are as follows. Since 2022, survey results will be presented in combined figures (i.e. samples collected from the Hong Kong People Representative Panel and Hong Kong People Volunteer Panel) instead of separated by the panel type.

Table 3: Q1 Survey results; Survey period: 10-13/1/2022

Opinion Question ^[2]	Combined (Base=5,955)		
	Don't know / hard to say	Try to predict	Average
Q1 What do you think is your chance of being infected with novel coronavirus pneumonia , also known as Wuhan pneumonia, in the coming one month? [Logarithmic Scale]	21%	79%	12% ^[3]

[2] Answer options included: 0-10 rating scale, others and don't know / hard to say. Answer options changed from linear scale to logarithmic scale since Oct 2020. Questions asked remain unchanged while options of lower probability are further broken down and increase gradually in logarithmic scale.

[3] The difference between the figure and the result from the previous survey has gone beyond the sampling error at 95% confidence level, meaning that the change is statistically significant prima facie. However, whether the difference is

Chart 1: Q1 Combined Chart

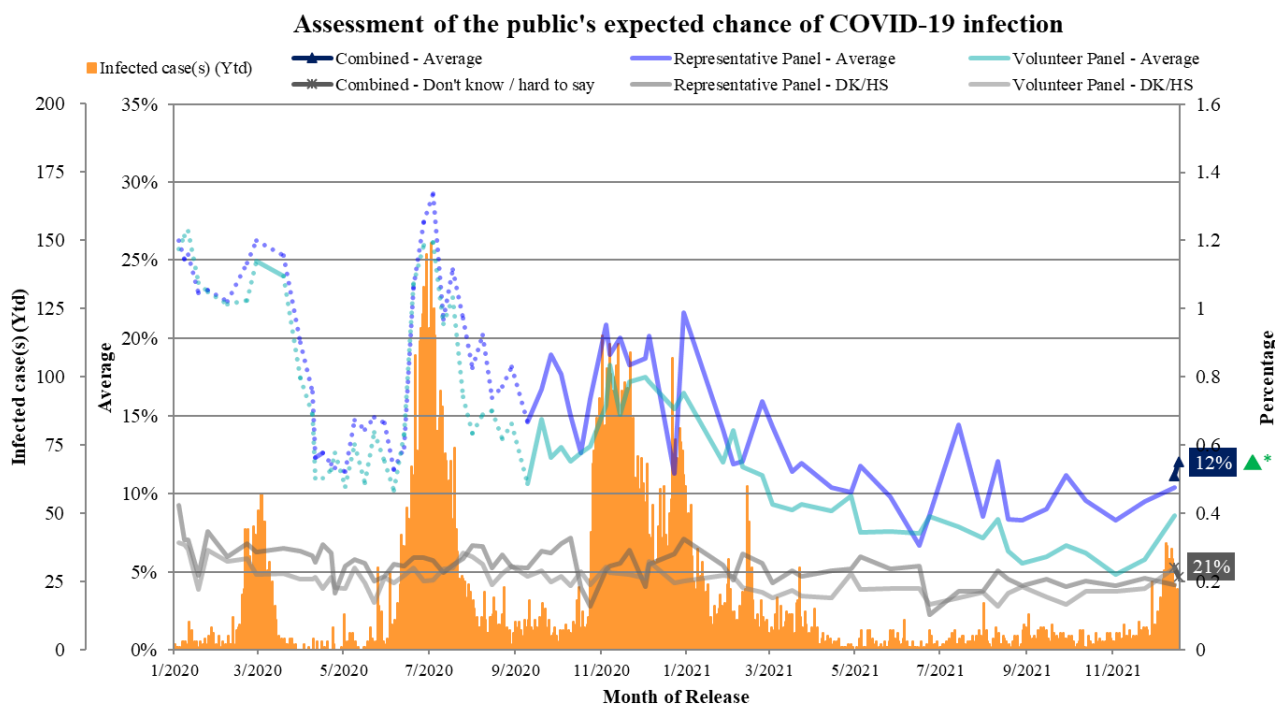


Table 4: Q2 Survey results; Survey period: 10-13/1/2022

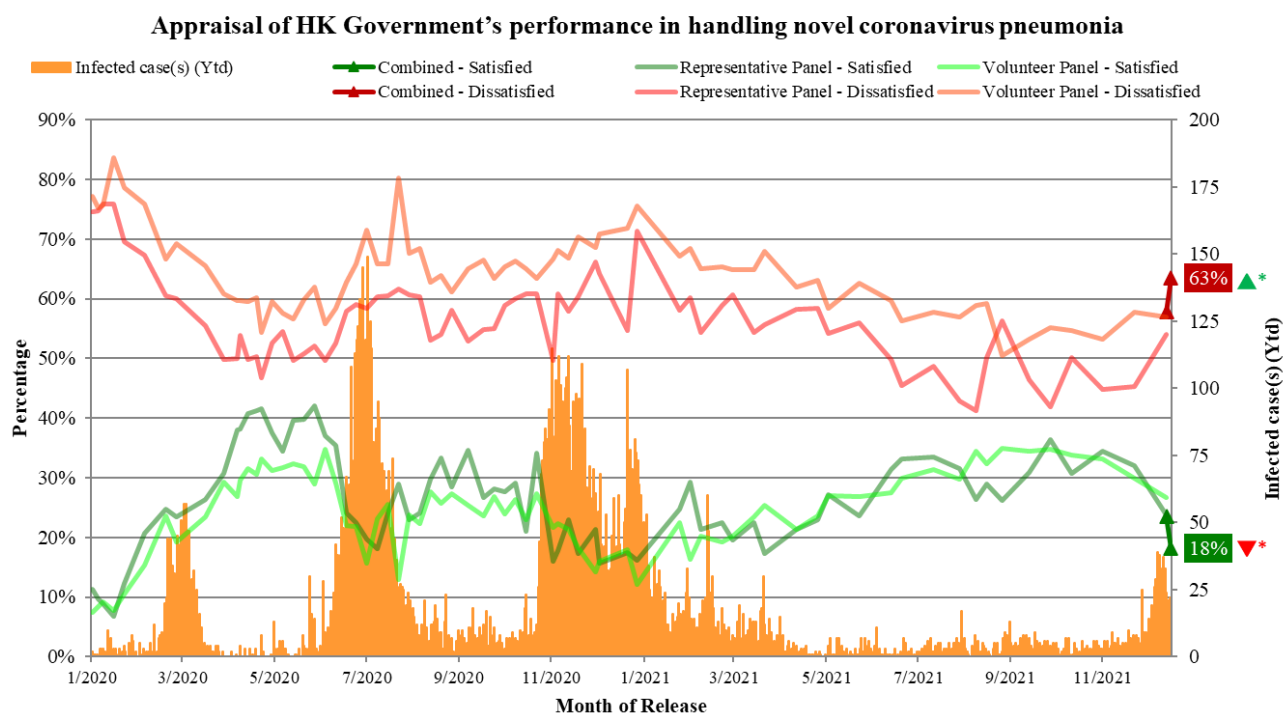
Opinion Question ^[4]	Combined (Base=5,941)			
	Satisfied	Half-half	Dissatisfied	Mean ^[5]
Q2 How satisfied or dissatisfied are you with the government’s performance in handling novel coronavirus pneumonia?	18% ^[6]	17% ^[6]	63%^[6]	2.1 ^[6]

[4] Answer options included: very much satisfied, somewhat satisfied, half-half, somewhat dissatisfied, very much dissatisfied and don’t know / hard to say.

[5] The mean value is calculated by quantifying all individual responses into 1, 2, 3, 4, 5 marks according to their degree of satisfaction, where 1 is the lowest and 5 the highest, and then calculate the sample mean.

[6] The difference between the figure and the result from the previous survey has gone beyond the sampling error at 95% confidence level, meaning that the change is statistically significant prima facie. However, whether the difference is statistically significant is not the same as whether they are practically useful or meaningful, and different weighting methods could have been applied in different surveys.

Chart 2: Q2 Combined Chart



We Hongkongers" Panel Survey

Quantitative analysis results of the "We Hongkongers" Panel Survey, after applying the standard weighting procedures, are as follows, all questions listed hereby are opinion questions:

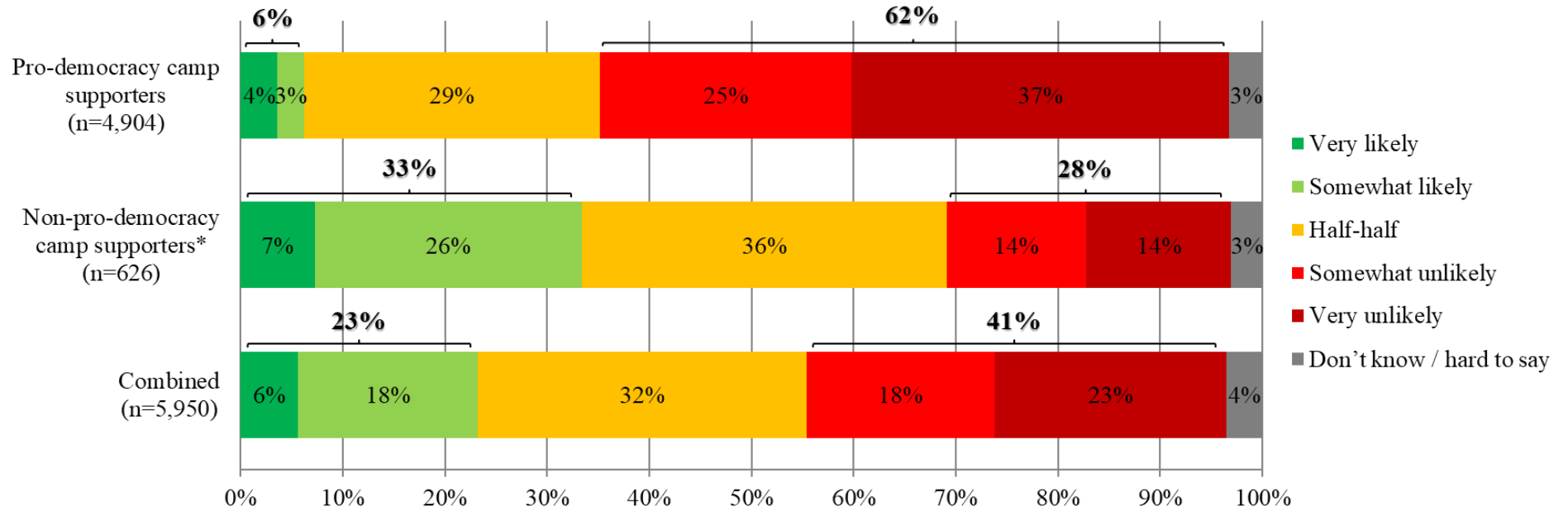
Table 5: Q1 Survey results, by camp type; Survey period: 10-13/1/2022

Q1 How likely do you think the government's new round of anti-epidemic measures can prevent an outbreak in the community?	Pro-democracy camp supporters (Base=4,904)	Non-pro-democracy camp supporters ^[7] (Base=626)	Combined (Base=5,950)
Very likely	4%	7%	6%
Somewhat likely } Likely	3% } 6%	26% } 33%	18% } 23%
Half-half	29%	36%	32%
Somewhat unlikely	25%	14%	18%
Very unlikely } Unlikely	37% } 62%	14% } 28%	23% } 41%
Don't know / hard to say	3%	3%	4%
Mean^[8]	2.1	3.0	2.6

[7] Include: pro-establishment camp supporters, centrist supporters, no political inclination / politically neutral / do not belong to any camp

[8] The mean value is calculated by quantifying all individual responses into 1, 2, 3, 4, 5 marks according to their degree of likeliness, where 1 is the lowest and 5 the highest, and then calculate the sample mean.

Chart 3: Q1 Combined chart, by camp type



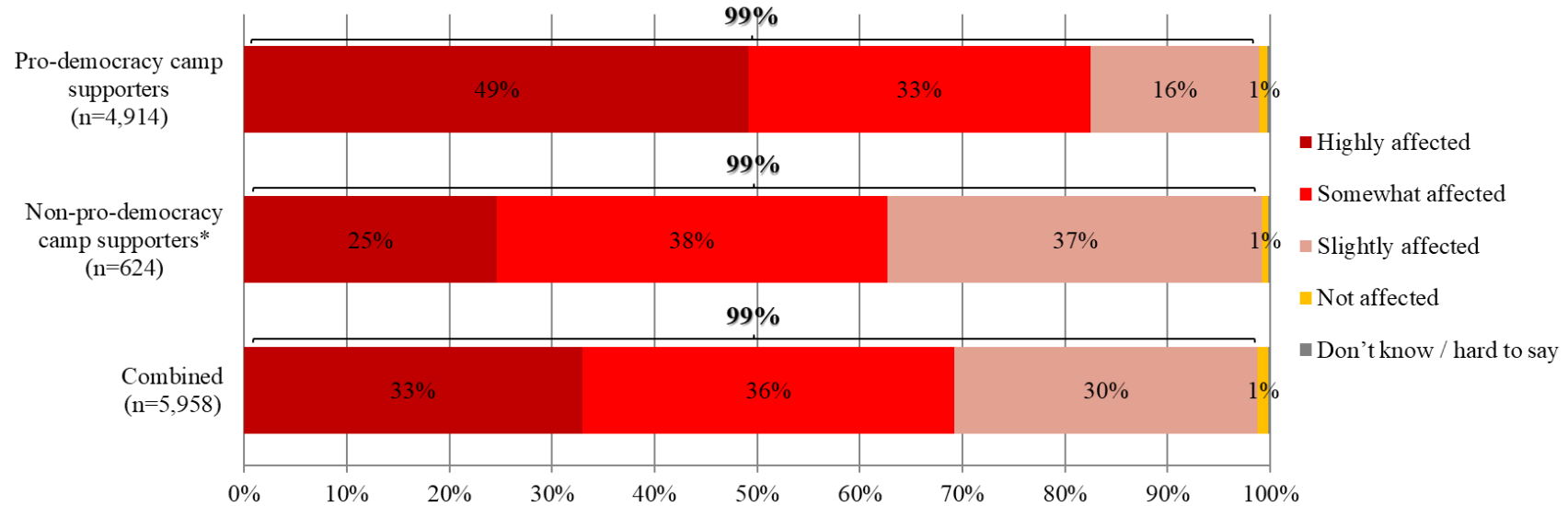
* Include: pro-establishment camp supporters, centrist supporters, no political inclination / politically neutral / do not belong to any camp

Table 6: Q2 Survey results, by camp type; Survey period: 10-13/1/2022

Q2 How much does the government’s new round of anti-epidemic measures affect your daily life?	Pro-democracy camp supporters (Base=4,914)	Non-pro-democracy camp supporters ^[9] (Base=624)	Combined (Base=5,958)
Highly affected	49%	25%	33%
Somewhat affected } Affected	33% } 99%	38% } 99%	36% } 99%
Slightly affected	16%	37%	30%
Not affected	1%	1%	1%
Don’t know / hard to say	<1%	<1%	<1%

[9] Include: pro-establishment camp supporters, centrist supporters, no political inclination / politically neutral / do not belong to any camp

Chart 4: Q2 Combined chart, by camp type



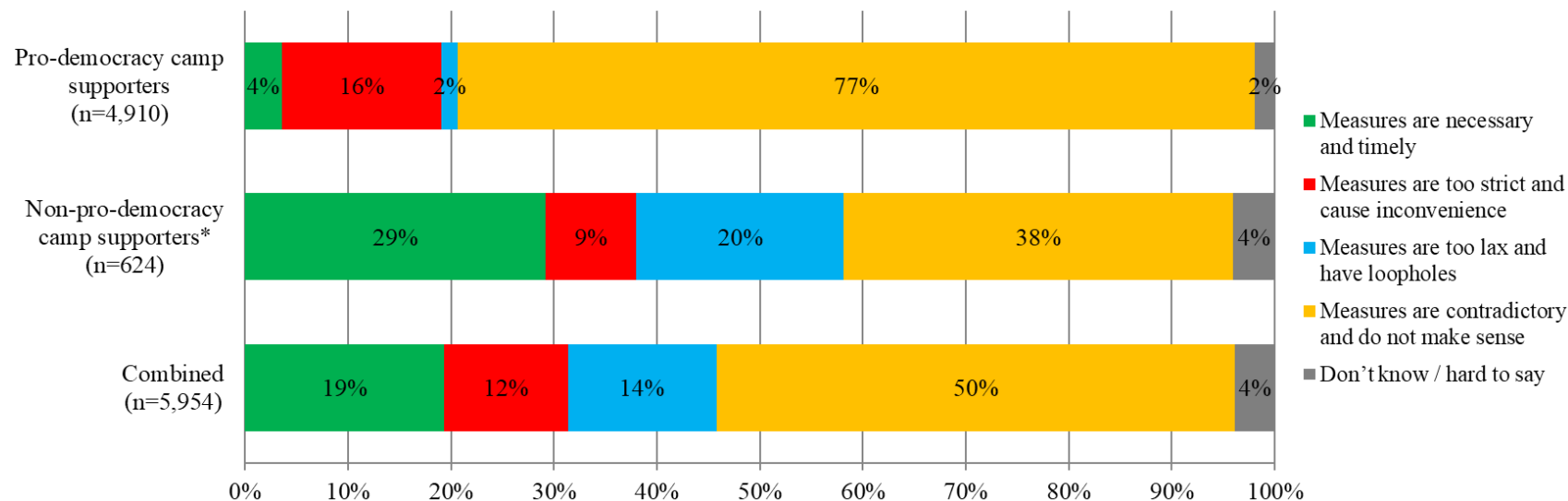
* Include: pro-establishment camp supporters, centrist supporters, no political inclination / politically neutral / do not belong to any camp

Table 7: Q3 Survey results, by camp type; Survey period: 10-13/1/2022

Q3 Which of the following do you think best describes the government’s current anti-epidemic measures?	Pro-democracy camp supporters (Base=4,910)	Non-pro-democracy camp supporters ^[10] (Base=624)	Combined (Base=5,954)
Measures are necessary and timely	4%	29%	19%
Measures are too strict and cause inconvenience	16%	9%	12%
Measures are too lax and have loopholes	2%	20%	14%
Measures are contradictory and do not make sense	77%	38%	50%
Don’t know / hard to say	2%	4%	4%

[10] Include: pro-establishment camp supporters, centrist supporters, no political inclination / politically neutral / do not belong to any camp

Chart 5: Q3 Combined chart, by camp type



* Include: pro-establishment camp supporters, centrist supporters, no political inclination / politically neutral / do not belong to any camp

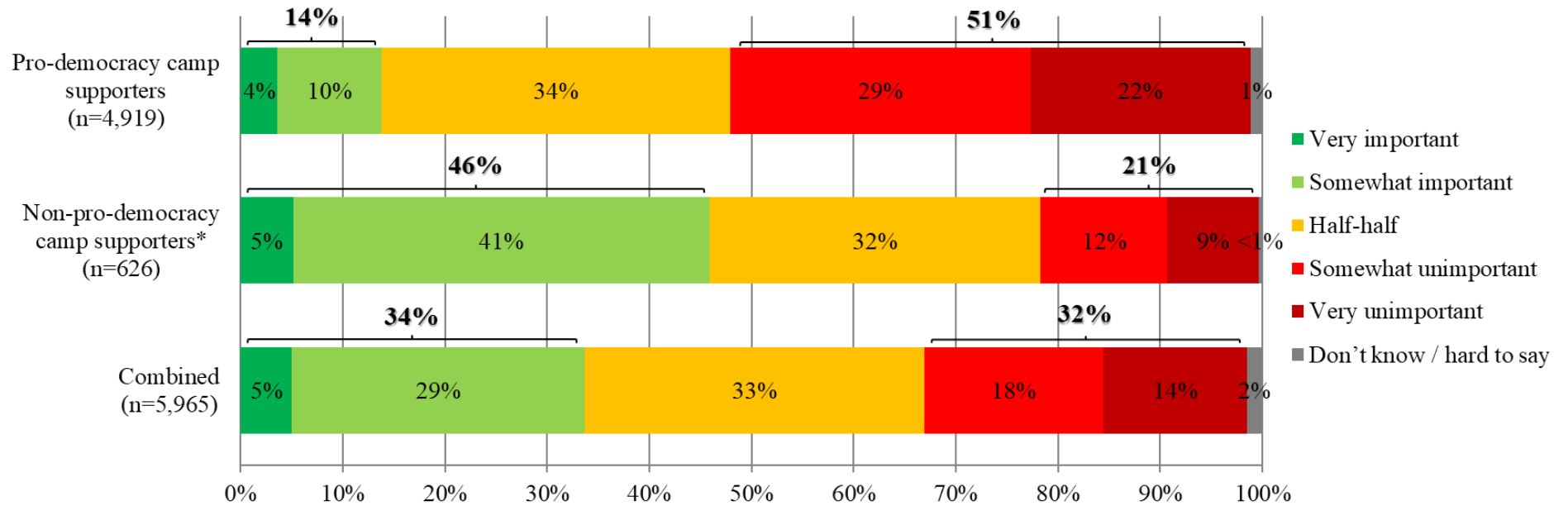
Table 8: Q4 Survey results, by camp type; Survey period: 10-13/1/2022

Q4 How much importance do you currently attach to the advice and opinions of anti-epidemic experts?	Pro-democracy camp supporters (Base=4,919)	Non-pro-democracy camp supporters ^[11] (Base=626)	Combined (Base=5,965)
Very important	4%	5%	5%
Somewhat important } Important	10% } 14%	41% } 46%	29% } 34%
Half-half	34%	32%	33%
Somewhat unimportant	29%	12%	18%
Very unimportant } Unimportant	22% } 51%	9% } 21%	14% } 32%
Don't know / hard to say	1%	<1%	2%
Mean^[12]	2.4	3.2	2.9

[11] Include: pro-establishment camp supporters, centrist supporters, no political inclination / politically neutral / do not belong to any camp

[12] The mean value is calculated by quantifying all individual responses into 1, 2, 3, 4, 5 marks according to their degree of importance, where 1 is the lowest and 5 the highest, and then calculate the sample mean.

Chart 6: Q4 Combined chart, by camp type



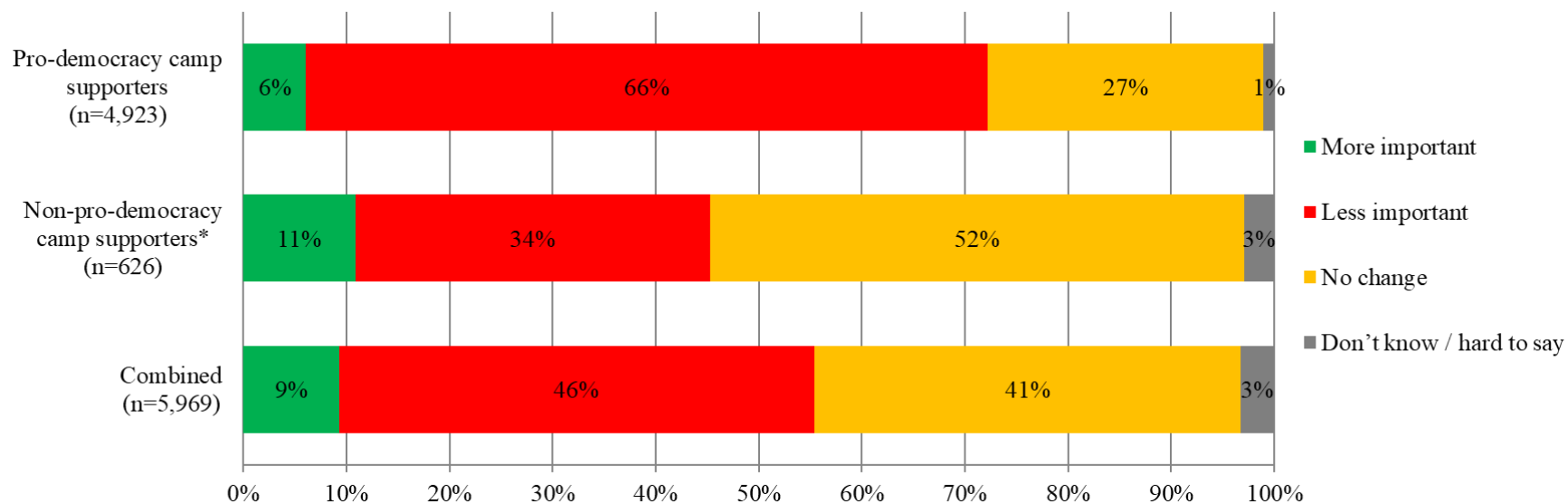
* Include: pro-establishment camp supporters, centrist supporters, no political inclination / politically neutral / do not belong to any camp

Table 9: Q5 Survey results, by camp type; Survey period: 10-13/1/2022

Q5 Has the level of importance you attach to the advice and opinions of anti-epidemic experts changed compared to the beginning of the epidemic?	Pro-democracy camp supporters (Base=4,923)	Non-pro-democracy camp supporters ^[13] (Base=626)	Combined (Base=5,969)
More important	6%	11%	9%
Less important	66%	34%	46%
No change	27%	52%	41%
Don't know / hard to say	1%	3%	3%

[13] Include: pro-establishment camp supporters, centrist supporters, no political inclination / politically neutral / do not belong to any camp

Chart 7: Q5 Combined chart, by camp type



* Include: pro-establishment camp supporters, centrist supporters, no political inclination / politically neutral / do not belong to any camp

Appendices

Appendix 1: Demographic profile of respondents

Gender:	Pro-democracy camp supporters				Non-pro-democracy camp supporters #				Total			
	Raw sample		Weighted sample		Raw sample		Weighted sample		Raw sample		Weighted sample	
	Freq	%	Freq	%	Freq	%	Freq	%	Freq	%	Freq	%
Male	2,920	59.3%	635	37.5%	371	59.3%	1,901	51.0%	3,529	59.1%	2,812	47.1%
Female	1,995	40.5%	1,051	62.1%	251	40.1%	1,823	48.9%	2,422	40.6%	3,133	52.5%
Other	7	0.1%	6	0.3%	4	0.6%	1	<0.1%	16	0.3%	23	0.4%
Total	4,922	100.0%	1,691	100.0%	626	100.0%	3,726	100.0%	5,967	100.0%	5,969	100.0%
Missing case(s)	1		<1		0		0		2		<1	

Age:	Pro-democracy camp supporters				Non-pro-democracy camp supporters #				Total			
	Raw sample		Weighted sample		Raw sample		Weighted sample		Raw sample		Weighted sample	
	Freq	%	Freq	%	Freq	%	Freq	%	Freq	%	Freq	%
12 - 29	881	17.9%	338	20.0%	66	10.6%	558	15.0%	1,049	17.6%	1,177	19.7%
30 - 39	1,255	25.5%	223	13.2%	124	19.8%	641	17.2%	1,492	25.0%	937	15.7%
40 - 49	1,180	24.0%	304	18.0%	140	22.4%	562	15.1%	1,424	23.9%	973	16.3%
50 - 59	1,039	21.1%	347	20.5%	157	25.1%	691	18.5%	1,270	21.3%	1,082	18.1%
60 or above	563	11.4%	479	28.3%	138	22.1%	1,274	34.2%	728	12.2%	1,800	30.2%
Total	4,918	100.0%	1,691	100.0%	625	100.0%	3,726	100.0%	5,963	100.0%	5,968	100.0%
Missing case(s)	5		<1		1		<1		6		1	

Education attainment:	Pro-democracy camp supporters				Non-pro-democracy camp supporters #				Total			
	Raw sample		Weighted sample		Raw sample		Weighted sample		Raw sample		Weighted sample	
	Freq	%	Freq	%	Freq	%	Freq	%	Freq	%	Freq	%
Primary or below	7	0.1%	42	2.5%	2	0.3%	45	1.2%	9	0.2%	87	1.5%
Secondary	770	15.7%	1,419	83.9%	143	23.0%	2,032	54.6%	939	16.4%	3,630	63.5%
Tertiary or above	4,138	84.2%	230	13.6%	478	76.7%	1,641	44.1%	4,772	83.4%	2,003	35.0%
Total	4,915	100.0%	1,691	100.0%	623	100.0%	3,718	100.0%	5,720	100.0%	5,720	100.0%
Missing case(s)	8		<1		3		7		249		249	

Occupation:	Pro-democracy camp supporters				Non-pro-democracy camp supporters #				Total			
	Raw sample		Weighted sample		Raw sample		Weighted sample		Raw sample		Weighted sample	
	Freq	%	Freq	%	Freq	%	Freq	%	Freq	%	Freq	%
Administrators and professionals	2,005	40.9%	194	11.5%	218	35.1%	791	21.3%	2,291	40.1%	1,042	18.3%
Clerks and service workers	1,357	27.7%	494	29.3%	151	24.3%	1,016	27.4%	1,553	27.2%	1,614	28.3%
Workers	128	2.6%	65	3.9%	25	4.0%	169	4.5%	157	2.8%	241	4.2%
Students	240	4.9%	143	8.5%	17	2.7%	185	5.0%	270	4.7%	374	6.6%
Home-makers / housewives	185	3.8%	244	14.5%	22	3.5%	323	8.7%	216	3.8%	602	10.6%
Others	992	20.2%	547	32.4%	188	30.3%	1,229	33.1%	1,222	21.4%	1,836	32.2%
Total	4,907	100.0%	1,686	100.0%	621	100.0%	3,713	100.0%	5,709	100.0%	5,709	100.0%
Missing case(s)	16		6		5		13		260		260	

Political inclination:	Pro-democracy camp supporters				Non-pro-democracy camp supporters #				Total			
	Raw sample		Weighted sample		Raw sample		Weighted sample		Raw sample		Weighted sample	
	Freq	%	Freq	%	Freq	%	Freq	%	Freq	%	Freq	%
Pro-democracy camp	2,732	55.5%	1,169	69.1%	0	0.0%	0	0.0%	2,732	47.7%	1,169	20.4%
Pro-establishment camp	0	0.0%	0	0.0%	42	6.7%	910	24.4%	42	0.7%	910	15.9%
Localist	2,191	44.5%	522	30.9%	0	0.0%	0	0.0%	2,191	38.3%	522	9.1%
Centrist	0	0.0%	0	0.0%	209	33.4%	1,035	27.8%	209	3.7%	1,035	18.1%
Others	0	0.0%	0	0.0%	0	0.0%	0	0.0%	63	1.1%	82	1.4%
No political inclination / politically neutral / don't belong to any camp	0	0.0%	0	0.0%	375	59.9%	1,781	47.8%	375	6.5%	1,781	31.1%
Don't know / hard to say	0	0.0%	0	0.0%	0	0.0%	0	0.0%	114	2.0%	227	4.0%
Total	4,923	100.0%	1,692	100.0%	626	100.0%	3,726	100.0%	5,726	100.0%	5,726	100.0%
Missing case(s)	0		0		0		0		243		243	

Appendix 2: Contact Information

Total valid samples	5,969
Survey period	10-13/1/2022
Success rate	6.7%
Questionnaires sent out	88,759
Questionnaires received	6,188
Ineligible samples	64
Invalid samples	0
Incomplete samples	155
Standard error	0.6%
Sampling error	1.3%

Appendix 3: Quantitative analysesQuantitative analyses for "Community Health Project"

Q1 What do you think is your chance of being infected with the Coronavirus disease, also known as Wuhan pneumonia, in the coming one month? [Logarithmic Scale]	Total	
	Frequencies	Percentages (Base=5,955)
0% chance (Certainly not)	643	10.8%
0.001% chance (1 in 100,000)	918	15.4%
0.01% chance (1 in 10,000)	413	6.9%
0.1% chance (1 in 1,000)	383	6.4%
1% chance (1 in 100)	456	7.7%
5% chance (1 in 20)	272	4.6%
10% chance (1 in 10) } Small chance	351	5.9%
15% chance	142	2.4%
20% chance	158	2.7%
25% chance	77	1.3%
30% chance	88	1.5%
35% chance	12	0.2%
40% chance	27	0.5%
45% chance	53	0.9%
50% chance	495	8.3%
60% chance	15	0.2%
70% chance	70	1.2%
80% chance } Large chance	19	0.3%
90% chance	8	0.1%
100% chance (Certainly will)	39	0.7%
Others	39	0.7%
Don't know / hard to say	1,277	21.4%
Total	Total	100.0%
Mean		1.20
Standard error of mean		0.03
Median		0.01
Refuse to answer		16

Q2 How satisfied or dissatisfied are you with the government's performance in handling novel coronavirus pneumonia?	Total	
	Frequencies	Percentages (Base=5,941)
Very much satisfied } Satisfied	237	4.0%
Somewhat satisfied	844	14.2%
Half-half	1,038	17.4%
Somewhat dissatisfied } Dissatisfied	641	10.8%
Very much dissatisfied	3,137	52.7%
Don't know / hard to say	56	0.9%
Total	5,952	100.0%
Mean values		1.2
Standard error of mean		<0.1
Median		1.0
Refuse to answer		17
Net value (Satisfied- Dissatisfied)		-45.3%

Quantitative analyses for “We Hongkongers”

Q1 Survey results, by camp type; Survey period: 10-13/1/2022

Q1 How likely do you think the government’s new round of anti-epidemic measures can prevent an outbreak in the community?	Pro-democracy camp supporters		Non-pro-democracy camp supporters #		Total	
	Percentages (Base=4,904)		Percentages (Base=626)		Percentages (Base=5,950)	
Very likely	3.6%	}6.2%	7.2%	}33.4%	5.6%	}23.2%
Somewhat likely	2.6%		26.2%		17.6%	
Half-half	28.9%		35.7%		32.2%	
Somewhat unlikely	24.7%	}61.6%	13.6%	}27.8%	18.4%	}41.0%
Very unlikely	37.0%		14.2%		22.6%	
Don’t know / hard to say	3.2%		3.0%		3.6%	
Total	100.0%		100.0%		100.0%	
Mean values	2.1		3.0		2.6	
Standard error of mean	<0.1		<0.1		<0.1	
Median	2.0		3.0		3.0	
<i>Refuse to answer</i>	1		0		1	
Net value (Likely- Unlikely)	-55.5%		+5.6%		-17.9%	

Including pro-establishment camp supporters, centrist supporters, no political inclination / politically neutral / do not belong to any camp

Q2 Survey results, by camp type; Survey period: 10-13/1/2022

Q2 How much does the government's new round of anti-epidemic measures affect your daily life?	Pro-democracy camp supporters	Non-pro-democracy camp supporters #	Total
	Percentages (Base=4,914)	Percentages (Base=624)	Percentages (Base=5,958)
Highly affected	49.2%	24.6%	32.9%
Somewhat affected } Affected	33.3% } 98.9%	38.1% } 99.2%	36.3% } 98.8%
Slightly affected	16.4%	36.5%	29.5%
Not affected	0.8%	0.6%	1.0%
Don't know / hard to say	0.2%	0.2%	0.2%
Total	100.0%	100.0%	100.0%
<i>Refuse to answer</i>	4	<1	4
Net value (Affected- Not affected)	+98.1%	+98.7%	+97.8%

Including pro-establishment camp supporters, centrist supporters, no political inclination / politically neutral / do not belong to any camp

Q3 Survey results, by camp type; Survey period: 10-13/1/2022

Q3 Which of the following do you think best describes the government's current anti-epidemic measures?	Pro-democracy camp supporters	Non-pro-democracy camp supporters #	Total
	Percentages (Base=4,910)	Percentages (Base=624)	Percentages (Base=5,954)
Measures are necessary and timely	3.6%	29.2%	19.3%
Measures are too strict and cause inconvenience	15.5%	8.8%	12.0%
Measures are too lax and have loopholes	1.5%	20.1%	14.4%
Measures are contradictory and do not make sense	77.5%	37.9%	50.4%
Don't know / hard to say	1.9%	4.0%	3.9%
Total	100.0%	100.0%	100.0%
<i>Refuse to answer</i>	2	<1	2

Including pro-establishment camp supporters, centrist supporters, no political inclination / politically neutral / do not belong to any camp

Q4 Survey results, by camp type; Survey period: 10-13/1/2022

Q4 How much importance do you currently attach to the advice and opinions of anti-epidemic experts?	Pro-democracy camp supporters	Non-pro-democracy camp supporters #	Total
	Percentages (Base=4,919)	Percentages (Base=626)	Percentages (Base=5,965)
Very Important } Important	3.6%	5.1%	5.0%
Somewhat important } Somewhat important	10.2%	40.8%	28.6%
Half-half	34.2%	32.4%	33.2%
Somewhat unimportant } Unimportant	29.3%	12.4%	17.6%
Very unimportant } Very unimportant	21.5%	9.0%	14.0%
Don't know / hard to say	1.2%	0.3%	1.5%
Total	100.0%	100.0%	100.0%
Mean values	2.4	3.2	2.9
Standard error of mean	<0.1	<0.1	<0.1
Median	2.0	3.0	3.0
<i>Refuse to answer</i>	<1	0	<1
Net value (Important- Unimportant)	-37.1%	+24.5%	+2.1%

Including pro-establishment camp supporters, centrist supporters, no political inclination / politically neutral / do not belong to any camp

Q5 Survey results, by camp type; Survey period: 10-13/1/2022

Q5 Has the level of importance you attach to the advice and opinions of anti-epidemic experts changed compared to the beginning of the epidemic?	Pro-democracy camp supporters	Non-pro-democracy camp supporters #	Total
	Percentages (Base=4,923)	Percentages (Base=626)	Percentages (Base=5,969)
More important	6.0%	10.9%	9.3%
Less important	66.1%	34.4%	46.1%
No change	26.7%	51.8%	41.4%
Don't know / hard to say	1.1%	2.9%	3.3%
Total	100.0%	100.0%	100.0%
<i>Refuse to answer</i>	0	0	0

Including pro-establishment camp supporters, centrist supporters, no political inclination / politically neutral / do not belong to any camp

Appendix 4: Survey questionnaire (10-13/1/2022)**We Hongkongers & Community Health Survey**

Hong Kong Public Opinion Research Institute is politically neutral. We welcome different opinions. All personal data will be kept strictly confidential. You can fill in the questionnaire again to express your latest views. When we need to work on the data, your last submission will be used. For enquiries, please email us at panel@pori.hk.

Last updated: xxxx-xx-xx

Tentative next update: xxxx-xx-xx

***Required**

Eligibility Confirmation

Are you a Hong Kong resident aged 12 or above (i.e., currently residing in Hong Kong)? *

- Yes
- No

We Hongkongers & Community Health Survey

How likely do you think it is that you will contract novel coronavirus pneumonia over the next one month?

(Please select the closest answer)

- | | | |
|---|----------------------------------|---|
| <input type="radio"/> 0% chance (Certainly not) | <input type="radio"/> 20% chance | <input type="radio"/> 70% chance |
| <input type="radio"/> 0.001% chance (1 in 100,000) | <input type="radio"/> 25% chance | <input type="radio"/> 80% chance |
| <input type="radio"/> 0.01% chance (1 in 10,000) | <input type="radio"/> 30% chance | <input type="radio"/> 90% chance |
| <input type="radio"/> 0.1% chance (1 in 1,000) | <input type="radio"/> 35% chance | <input type="radio"/> 100% chance (Certainly will) |
| <input type="radio"/> 1% chance (1 in 100) | <input type="radio"/> 40% chance | <input type="radio"/> _____ % chance |
| <input type="radio"/> 5% chance (1 in 20) | <input type="radio"/> 45% chance | <input type="radio"/> Don't know / hard to say |
| <input type="radio"/> 10% chance (1 in 10) | <input type="radio"/> 50% chance | |
| <input type="radio"/> 15% chance | <input type="radio"/> 60% chance | |

How satisfied or dissatisfied are you with the government's performance in handling novel coronavirus pneumonia?

- Very much satisfied
- Somewhat satisfied
- Half-half
- Somewhat dissatisfied

-
- Very much dissatisfied
 - Don't know / hard to say

How likely do you think the government's new round of anti-epidemic measures can prevent an outbreak in the community?

- Very likely
- Somewhat likely
- Half-half
- Somewhat unlikely
- Very unlikely
- Don't know / hard to say

How much does the government's new round of anti-epidemic measures affect your daily life?

- Highly affected
- Somewhat affected
- Slightly affected
- Not affected
- Don't know / hard to say

Which of the following do you think best describes the government's current anti-epidemic measures?

- Measures are necessary and timely
- Measures are too strict and cause inconvenience
- Measures are too lax and have loopholes
- Measures are contradictory and do not make sense
- Don't know / hard to say

How much importance do you currently attach to the advice and opinions of anti-epidemic experts?

- Very important
- Somewhat important
- Half-half
- Somewhat unimportant
- Very unimportant
- Don't know / hard to say

Has the level of importance you attach to the advice and opinions of anti-epidemic experts changed compared to the beginning of the epidemic?

- More important
- Less important
- No change
- Don't know / hard to say

Other Opinions

Generally speaking, how satisfied or dissatisfied are you with the current in Hong Kong?

(Randomise the three conditions)

	Very much satisfied	Somewhat satisfied	Half-half	Somewhat dissatisfied	Very much dissatisfied	Don't know / hard to say
Political condition						
Economic condition						
Livelihood condition						

Personal Information

This section is about personal information. If you have already provided relevant information in this survey series and have nothing to add or update, you may skip these questions. We will use the past data you provided in this survey series for analysis.

- I have already provided my personal information, and has nothing to add or update ([skip questions on personal information](#))
- Provide / update personal information now

Gender

- Male
- Female
- Other

Age

- _____ years old
- 12 - 14
- 15 - 17
- 18 - 19
- 20 - 24
- 25 - 29
- 30 - 34
- 35 - 39
- 40 - 44
- 45 - 49
- 50 - 54
- 55 - 59
- 60 - 64
- 65 - 69
- 70 or above

Educational attainment

(The highest level attended, regardless of whether you have completed the course, including what you are attending)

- Primary or below

- Lower secondary (Secondary 1 to 3)
- Upper secondary (Secondary 4 to 7 / DSE / Yi Jin)
- Tertiary: non-degree course (including diploma / certificate / sub-degree course)
- Tertiary: bachelor degree course
- Tertiary: postgraduate school or above

Occupation

(Owner / self-employed / freelance / part time / civil servant are not valid answers, please answer according to the job nature or content)

- Administrator and professional
- Clerical and service worker
- Production worker
- Student
- Home-maker / housewife
- Retired person
- Unemployed / between jobs / other non-employed
- Other: _____

Which of the following best describes your political inclination?

(Randomise the four camps)

- Localist
- Pro-democracy camp
- Centrist
- Pro-establishment camp
- Other: _____
- No political inclination / politically neutral / do not belong to any camp
- Don't know / hard to say

End of Questionnaire

Thank you for completing the survey. For enquiries, please email us at panel@pori.hk.