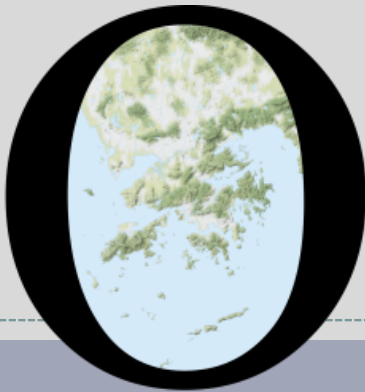


POP



HONG KONG PUBLIC OPINION PROGRAM

HONG KONG PUBLIC OPINION RESEARCH INSTITUTE

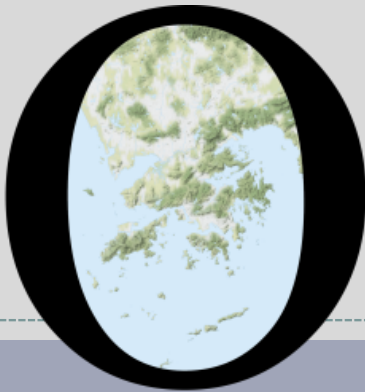
香港民意研究所 之 香港民意研究計劃

“We Hongkongers” Panel Survey

Latest Results

November 12, 2021

POP



HONG KONG PUBLIC OPINION PROGRAM

HONG KONG PUBLIC OPINION RESEARCH INSTITUTE

香港民意研究所 之 香港民意研究計劃

限聚指數

Group Gathering Prohibition Index

12/11/2021

樣本資料 - 限聚指數基準調查

Contact Information - Group Gathering Prohibition Index Benchmark Survey

3

	香港民研意見群組成員 HKPOP Panel
調查日期 Survey date	18/10 15:00 – 25/10 15:00
調查方法 Survey method	以電郵接觸群組成員，並於網上完成調查 Online survey
訪問對象 Target population	十二歲或以上的香港市民 Hong Kong residents aged 12+
總成功樣本 Total sample size	5,974
回應比率 Response rate	6.6%
抽樣誤差 Sampling error	95% 置信水平，百分比誤差 +/-1% Sampling error of percentages at +/-1% at 95% confidence level
加權方法 Weighting method	按照1) 政府統計處提供的全港人口年齡及性別分佈統計數字、各區議會人口數字； 2) 選舉事務處提供的區議會選舉結果；3) 常規調查中的特首評分分佈數字，以 「反覆多重加權法」作出調整。 The figures are rim-weighted according to 1) gender-age distribution of Hong Kong population and by District Councils population figures from Census and Statistics Department; 2) Voting results of District Councils Election from Registration and Electoral Office; 3) rating distribution of Chief Executive from regular tracking surveys.

限聚指數

Group Gathering Prohibition Index

4

- **最新調查日期 Latest survey date: 18-25/10/2021 (N=5,974)**
- **上次調查日期 Last survey date: 13-20/9/2021 (N=6,210)**
- **上上次調查日期 Second last survey date: 16-23/8/2021 (N=7,456)**

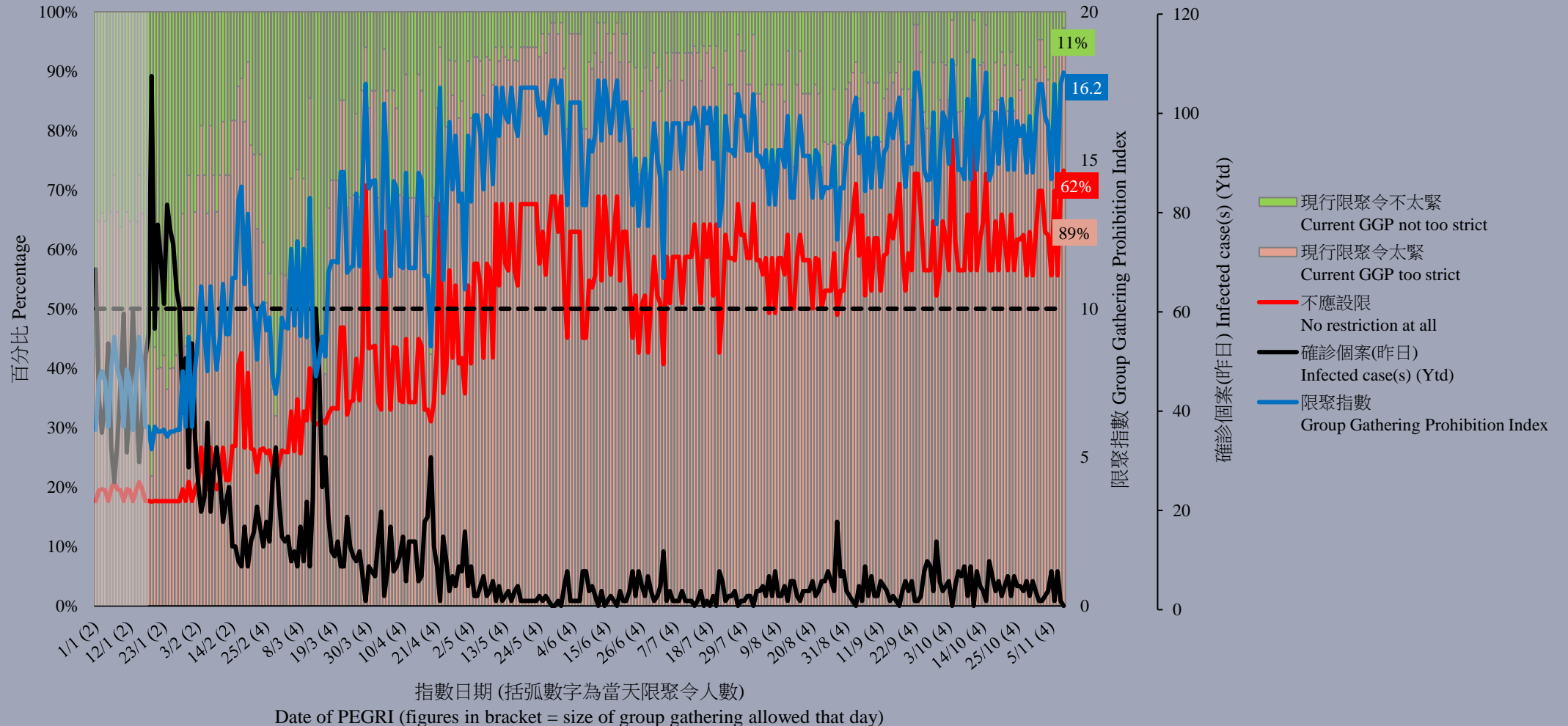
意見題目	Opinion Questions
<p>你認為香港應否無條件全面撤銷「限聚令」？</p> <ul style="list-style-type: none">▪ 應該無條件撤銷「限聚令」▪ 不應該，應視乎疫情而定▪ 不知道／很難說 <p>[追問沒有選擇應該“無條件撤銷「限聚令」”者]</p> <p>你認為每天新增確診個案數應是多少，才適合將「限聚令」訂於2人？</p> <p>你認為每天新增確診個案數應是多少，才適合將「限聚令」訂於4人？</p> <p>你認為每天新增確診個案數應是多少，才適合將「限聚令」訂於8人？</p> <p>你認為每天新增確診個案數應是多少，才適合將「限聚令」訂於16人？</p> <p>你認為感染個案清零多少天後，限聚令應該全面撤銷？</p> <p>請於以下欄位列舉你認為合適的 [個案數 及 限聚人數] 組合.....</p>	<p>Do you think the regulation prohibiting gatherings of more than a specific number of people in public places should be completely lifted unconditionally in Hong Kong?</p> <ul style="list-style-type: none">▪ Yes, the ban should be lifted unconditionally▪ No, it should depend on the epidemic situation▪ Don't know / hard to say <p>[For respondents NOT answering “Yes, the ban should be lifted unconditionally”]</p> <p>How many newly confirmed cases each day should there be before it would be appropriate to prohibit gatherings of more than 2 people?</p> <p>How many newly confirmed cases each day should there be before it would be appropriate to prohibit gatherings of more than 4 people?</p> <p>How many newly confirmed cases each day should there be before it would be appropriate to prohibit gatherings of more than 8 people?</p> <p>How many newly confirmed cases each day should there be before it would be appropriate to prohibit gatherings of more than 16 people?</p> <p>After how many days of zero infection do you think the group gathering ban should be lifted altogether?</p> <p>Please list combinations of [number of cases & number of people allowed in gatherings] that you think is appropriate in the field below:</p>

調查結果 - 限聚接受程度

Survey Result – Group Gathering Prohibition Acceptance Level

5

限聚接受程度 Group Gathering Prohibition Acceptance Level



限聚指數 - 分析評論

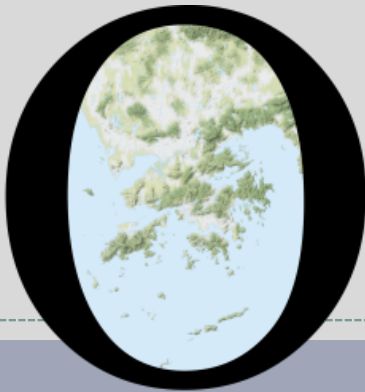
Group Gathering Prohibition Index – Commentary

6

復興經濟民生大聯盟成員任偉豪指出：「本港昨日起可開始打第三針疫苗，但眾多已接種的感染個案已證明疫苗無助於剪斷病毒的傳播，即是說第三針接種與『清零政策』無關。相反在『與病毒共存』的歐美地區，因人們都暴露在容易感染的環境之下，持續接種疫苗才會變得更有意義。在香港，第三針只剩下『安心』和滿足通關條件的作用。」

Yam Wai Ho, member of Alliance of Revitalizing Economy and Livelihood observed, “The third dose of vaccination started in Hong Kong yesterday. However, many cases of infection that have been vaccinated have proved that the vaccine does not help cut off the spread of the virus, that is to say, the third dose of vaccination has nothing to do with the ‘zero-case policy’. On the contrary, in Europe and the United States where people ‘coexist with the virus’, because people are exposed to an environment that is prone to infection, continuous vaccination will make more sense. In Hong Kong, the third dose only has the function of ‘reassurance’ and meeting travel clearance requirements with mainland China.”

POP



HONG KONG PUBLIC OPINION PROGRAM

HONG KONG PUBLIC OPINION RESEARCH INSTITUTE

香港民意研究所 之 香港民意研究計劃

“We Hongkongers” Panel Survey

Latest Results

November 12, 2021

Contact Information - “We Hongkongers” Panel Survey

8

	HKPOP Panel
Date of survey	November 8, 3pm – November 11, 3pm
Survey method	Online survey
Target population	Hong Kong residents aged 12+
Total sample size	5,911
Response rate	6.6%
Sampling error	Sampling error of percentages at +/-1% at 95% confidence level
Weighting method	The figures are rim-weighted according to 1) gender-age distribution, educational attainment (highest level attended) distribution, economic activity status distribution of Hong Kong population and by District Councils population figures from Census and Statistics Department; 2) Voting results of District Councils Election from Registration and Electoral Office; 3) rating distribution of Chief Executive from regular tracking surveys.

Survey Result - “We Hongkongers” Panel Survey

9

- Latest survey period: 8-11/11/2021
- **Question: Q1 How fair or unfair do you think the current electoral system of Hong Kong is?**

	Pro-democracy camp supporters (n=5,044)		Non-pro-democracy camp supporters* (n=576)		Combined^ (n=5,620)	
Very fair	2%	} 5%	10%	} 38%	7%	} 28%
Somewhat fair	3%		28%		21%	
Half-half	3%		14%		11%	
Somewhat unfair	3%	} 92%	15%	} 43%	11%	} 58%
Very unfair	89%		28%		47%	
Don't know / hard to say	<1%		5%		3%	
Mean†	1.3		2.8		2.3	

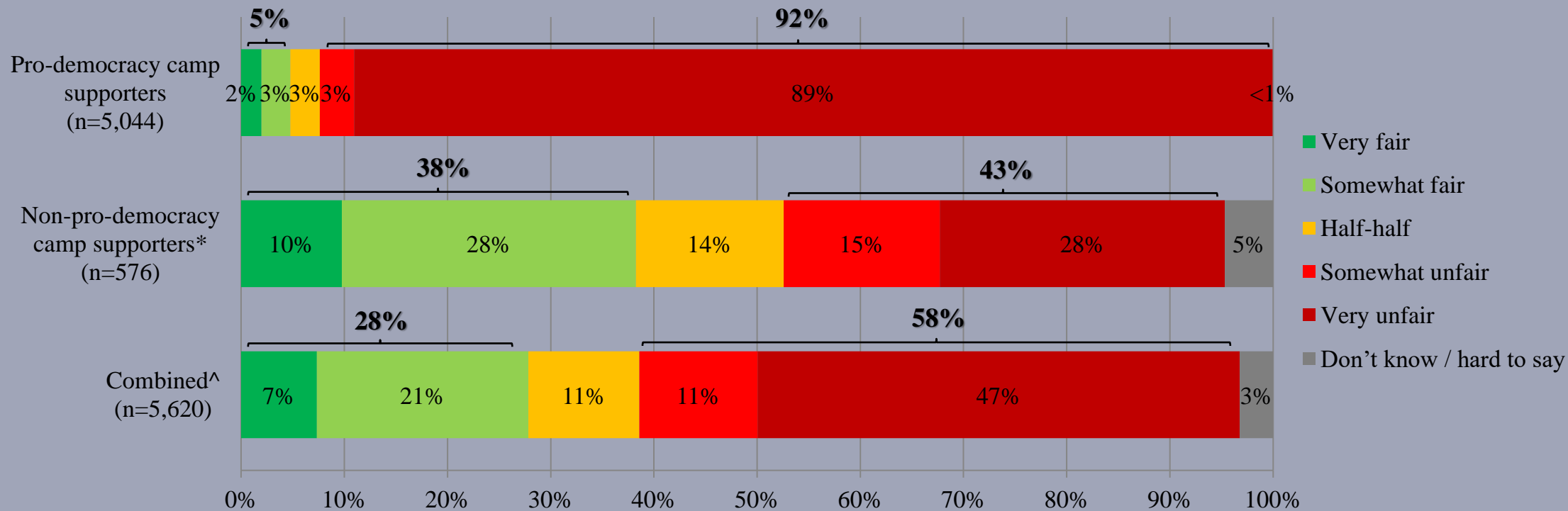
* Include: pro-establishment camp supporters, centrist supporters, no political inclination / politically neutral / do not belong to any camp

^ The aggregated figures come from adjusting the by-group weighted figures using ratio of “pan-democratic” vs “non-pan-democratic” collected in regular tracking survey.

† The mean value is calculated by quantifying all individual responses into 1, 2, 3, 4, 5 marks according to their degree of fairness level, where 1 is the lowest and 5 the highest, and then calculate the sample mean.

Survey Result - “We Hongkongers” Panel Survey

- Latest survey period: 8-11/11/2021
- **Question: Q1 How fair or unfair do you think the current electoral system of Hong Kong is?**



* Include: pro-establishment camp supporters, centrist supporters, no political inclination / politically neutral / do not belong to any camp

^ The aggregated figures come from adjusting the by-group weighted figures using ratio of “pan-democratic” vs “non-pan-democratic” collected in regular tracking survey.

Survey Result - “We Hongkongers” Panel Survey

11

- Latest survey period: 8-11/11/2021
- **Question: Q2 There is a view that the current electoral system of Hong Kong “adequately displays desirable democratic qualities such as broad representativeness and balanced participation”. How much do you support or oppose this view?**

	Pro-democracy camp supporters (n=5,040)		Non-pro-democracy camp supporters* (n=576)		Combined^ (n=5,616)	
Strongly support	4%	} 7%	9%	} 38%	8%	} 29%
Somewhat support	3%		29%		21%	
Half-half	3%		14%		11%	
Somewhat oppose	3%	} 89%	17%	} 47%	13%	} 60%
Strongly oppose	86%		30%		47%	
Don't know / hard to say	<1%		1%		1%	
Mean†	1.4		2.7		2.3	

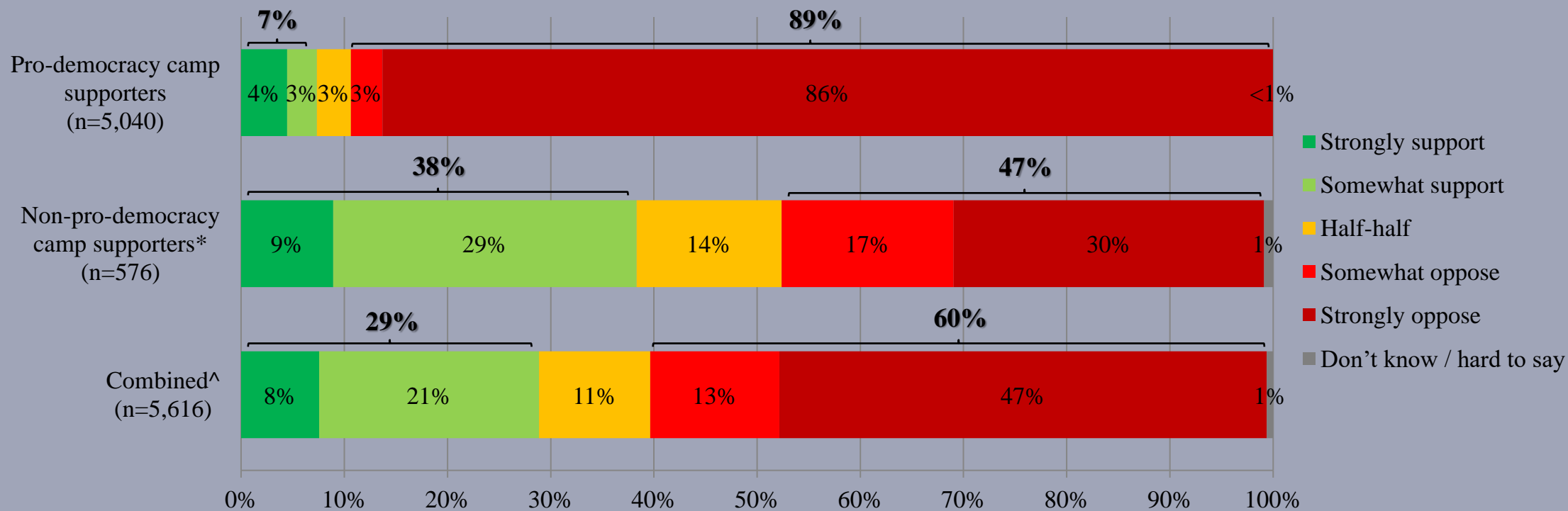
* Include: pro-establishment camp supporters, centrist supporters, no political inclination / politically neutral / do not belong to any camp

^ The aggregated figures come from adjusting the by-group weighted figures using ratio of “pan-democratic” vs “non-pan-democratic” collected in regular tracking survey.

† The mean value is calculated by quantifying all individual responses into 1, 2, 3, 4, 5 marks according to their degree of support level, where 1 is the lowest and 5 the highest, and then calculate the sample mean.

Survey Result - “We Hongkongers” Panel Survey

- Latest survey period: 8-11/11/2021
- **Question: Q2 There is a view that the current electoral system of Hong Kong “adequately displays desirable democratic qualities such as broad representativeness and balanced participation”. How much do you support or oppose this view?**



* Include: pro-establishment camp supporters, centrist supporters, no political inclination / politically neutral / do not belong to any camp

^ The aggregated figures come from adjusting the by-group weighted figures using ratio of “pan-democratic” vs “non-pan-democratic” collected in regular tracking survey.

Survey Result - “We Hongkongers” Panel Survey

13

- Latest survey period: 8-11/11/2021
- **Question: Q3 How much influence do you think the Central Government has over election results under the current electoral system of Hong Kong?**

	Pro-democracy camp supporters (n=5,045)	Non-pro-democracy camp supporters* (n=576)	Combined^ (n=5,621)
Very strong influence	78%	40%	52%
Somewhat strong influence	12%	24%	21%
	90%	64%	72%
Half-half	5%	14%	11%
Somewhat weak influence	3%	16%	12%
Very weak influence / No influence at all	2%	5%	4%
	5%	21%	16%
Don't know / hard to say	<1%	1%	1%
Mean†	4.6	3.8	4.0

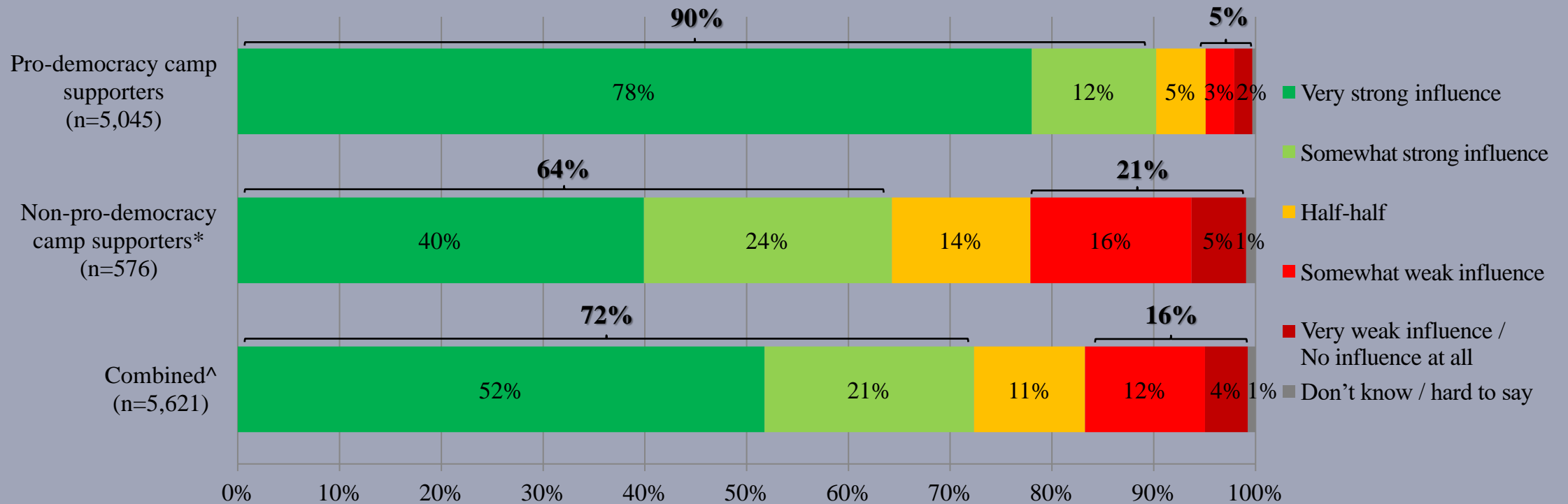
* Include: pro-establishment camp supporters, centrist supporters, no political inclination / politically neutral / do not belong to any camp

^ The aggregated figures come from adjusting the by-group weighted figures using ratio of “pan-democratic” vs “non-pan-democratic” collected in regular tracking survey.

† The mean value is calculated by quantifying all individual responses into 1, 2, 3, 4, 5 marks according to their degree of influence level, where 1 is the lowest and 5 the highest, and then calculate the sample mean.

Survey Result - “We Hongkongers” Panel Survey

- Latest survey period: 8-11/11/2021
- **Question: Q3 How much influence do you think the Central Government has over election results under the current electoral system of Hong Kong?**



* Include: pro-establishment camp supporters, centrist supporters, no political inclination / politically neutral / do not belong to any camp

^ The aggregated figures come from adjusting the by-group weighted figures using ratio of “pan-democratic” vs “non-pan-democratic” collected in regular tracking survey.

Survey Result - “We Hongkongers” Panel Survey

15

- Latest survey period: 8-11/11/2021
- **Question: Q4 Then do you think such level of influence is in line with “one country, two systems”?**

	Pro-democracy camp supporters (n=5,047)	Non-pro-democracy camp supporters* (n=577)	Combined^ (n=5,624)
Yes	8%	50%	37%
Half-half	3%	14%	11%
No	88%	33%	50%
Don't know / hard to say	1%	2%	2%

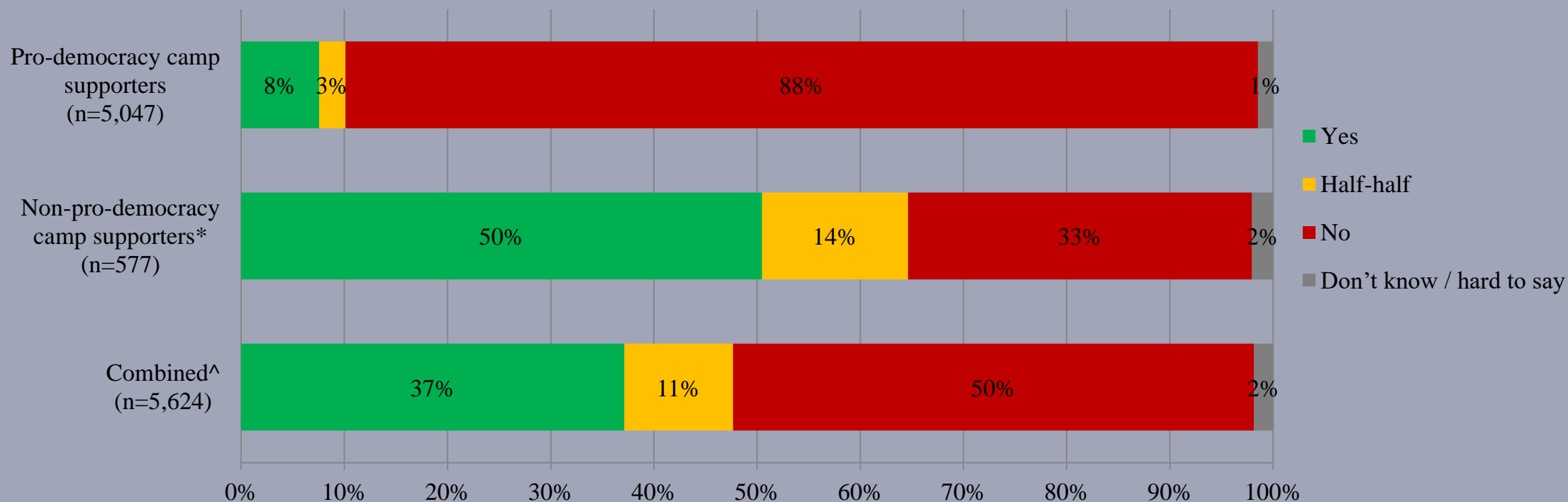
* Include: pro-establishment camp supporters, centrist supporters, no political inclination / politically neutral / do not belong to any camp

^ The aggregated figures come from adjusting the by-group weighted figures using ratio of “pan-democratic” vs “non-pan-democratic” collected in regular tracking survey.

Survey Result - “We Hongkongers” Panel Survey

16

- Latest survey period: 8-11/11/2021
- **Question: Q4 Then do you think such level of influence is in line with “one country, two systems”?**



* Include: pro-establishment camp supporters, centrist supporters, no political inclination / politically neutral / do not belong to any camp

^ The aggregated figures come from adjusting the by-group weighted figures using ratio of “pan-democratic” vs “non-pan-democratic” collected in regular tracking survey.