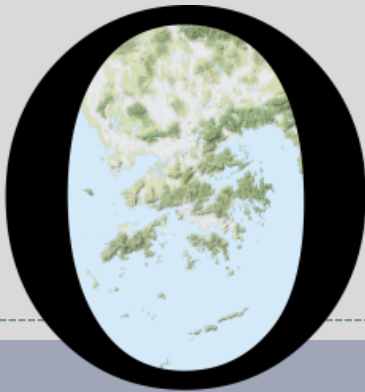


# POP



---

HONG KONG PUBLIC OPINION PROGRAM

HONG KONG PUBLIC OPINION RESEARCH INSTITUTE

香港民意研究所 之 香港民意研究計劃

---

**“We Hongkongers” Panel Survey**

**Latest Results**

**November 5, 2021**

# POP



---

HONG KONG PUBLIC OPINION PROGRAM

HONG KONG PUBLIC OPINION RESEARCH INSTITUTE

香港民意研究所 之 香港民意研究計劃

---

**限聚指數**

**Group Gathering Prohibition Index**

**5/11/2021**

# 樣本資料 - 限聚指數基準調查

## Contact Information - Group Gathering Prohibition Index Benchmark Survey

3

	香港民研意見群組成員 HKPOP Panel
調查日期 Survey date	18/10 15:00 – 25/10 15:00
調查方法 Survey method	以電郵接觸群組成員，並於網上完成調查 Online survey
訪問對象 Target population	十二歲或以上的香港市民 Hong Kong residents aged 12+
總成功樣本 Total sample size	5,974
回應比率 Response rate	6.6%
抽樣誤差 Sampling error	95% 置信水平，百分比誤差 +/-1% Sampling error of percentages at +/-1% at 95% confidence level
加權方法 Weighting method	按照1) 政府統計處提供的全港人口年齡及性別分佈統計數字、各區議會人口數字； 2) 選舉事務處提供的區議會選舉結果；3) 常規調查中的特首評分分佈數字，以 「反覆多重加權法」作出調整。 The figures are rim-weighted according to 1) gender-age distribution of Hong Kong population and by District Councils population figures from Census and Statistics Department; 2) Voting results of District Councils Election from Registration and Electoral Office; 3) rating distribution of Chief Executive from regular tracking surveys.

# 限聚指數

## Group Gathering Prohibition Index

4

- **最新調查日期 Latest survey date: 18-25/10/2021 (N=5,974)**
- **上次調查日期 Last survey date: 13-20/9/2021 (N=6,210)**
- **上上次調查日期 Second last survey date: 16-23/8/2021 (N=7,456)**

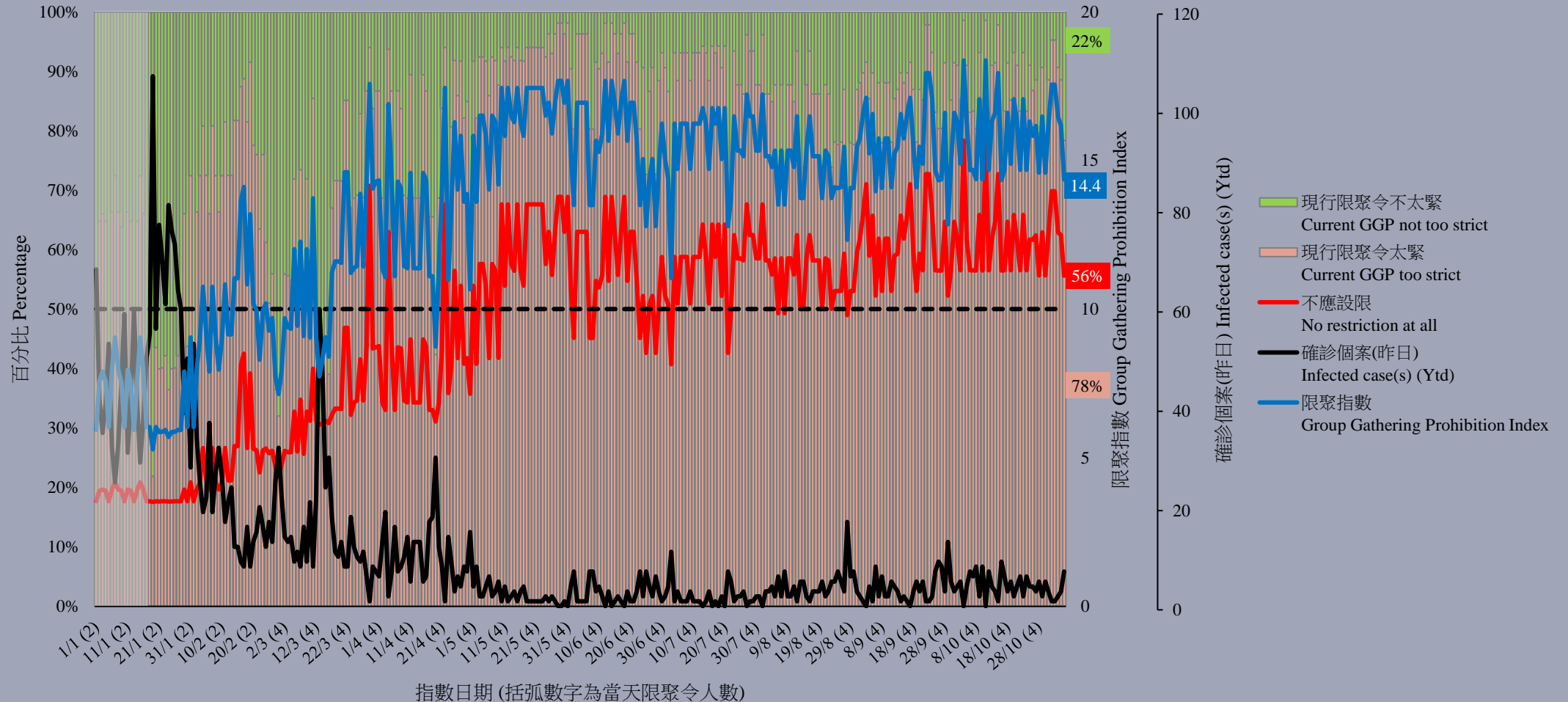
意見題目	Opinion Questions
<p>你認為香港應否無條件全面撤銷「限聚令」？</p> <ul style="list-style-type: none"><li>▪ 應該無條件撤銷「限聚令」</li><li>▪ 不應該，應視乎疫情而定</li><li>▪ 不知道／很難說</li></ul> <p>[追問沒有選擇應該“無條件撤銷「限聚令」”者]</p> <p>你認為每天新增確診個案數應是多少，才適合將「限聚令」訂於2人？</p> <p>你認為每天新增確診個案數應是多少，才適合將「限聚令」訂於4人？</p> <p>你認為每天新增確診個案數應是多少，才適合將「限聚令」訂於8人？</p> <p>你認為每天新增確診個案數應是多少，才適合將「限聚令」訂於16人？</p> <p>你認為感染個案清零多少天後，限聚令應該全面撤銷？</p> <p>請於以下欄位列舉你認為合適的 [個案數 及 限聚人數] 組合.....</p>	<p>Do you think the regulation prohibiting gatherings of more than a specific number of people in public places should be completely lifted unconditionally in Hong Kong?</p> <ul style="list-style-type: none"><li>▪ Yes, the ban should be lifted unconditionally</li><li>▪ No, it should depend on the epidemic situation</li><li>▪ Don't know / hard to say</li></ul> <p>[For respondents NOT answering “Yes, the ban should be lifted unconditionally”]</p> <p>How many newly confirmed cases each day should there be before it would be appropriate to prohibit gatherings of more than 2 people?</p> <p>How many newly confirmed cases each day should there be before it would be appropriate to prohibit gatherings of more than 4 people?</p> <p>How many newly confirmed cases each day should there be before it would be appropriate to prohibit gatherings of more than 8 people?</p> <p>How many newly confirmed cases each day should there be before it would be appropriate to prohibit gatherings of more than 16 people?</p> <p>After how many days of zero infection do you think the group gathering ban should be lifted altogether?</p> <p>Please list combinations of [number of cases &amp; number of people allowed in gatherings] that you think is appropriate in the field below:</p>

# 調查結果 - 限聚接受程度

## Survey Result – Group Gathering Prohibition Acceptance Level

5

限聚接受程度 Group Gathering Prohibition Acceptance Level



指數日期 (括弧數字為當天限聚令人數)  
Date of PEGRI (figures in bracket = size of group gathering allowed that day)

# 限聚指數 - 分析評論

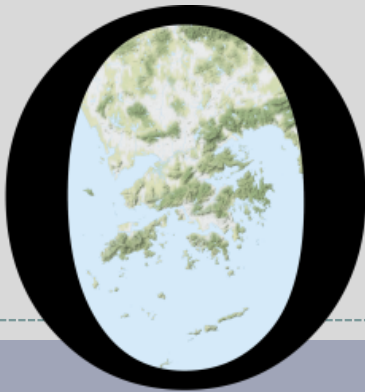
## Group Gathering Prohibition Index – Commentary

6

獨立評論人潘麒智指出：「政府近日透過傳媒放風，透露中港兩地免檢疫通關有望於本年底率先試行，涵蓋範圍包括商界、探親、恩恤及奔喪等人士，商界每周會有1,000個名額。不過，在疫情受控及本地清零多日，限聚令仍繼續執行，防疫措施不單無放寬，反而繼續收緊，港府更規定市民進入政府設施必須使用『安心出行』，令民怨四起，零售業、飲食業界叫苦連天。政府如堅持全民安心，本人建議政府應先取消限聚令，增加市民使用『安心出行』的理據。」

**Independent commentator KC Poon observed, “The Government has recently disclosed through the media that quarantine-free border crossing between Hong Kong and China is expected to be implemented on a trial basis by end of this year, covering the business sector, family visits, compassionate visits and funerals, with a quota of 1,000 per week for the business sector. However, even after the epidemic has been under control and the local community has registered zero cases for a number of days, the restriction on gathering continues to be enforced and the epidemic preventive measures have not been relaxed, but rather tightened. The Government even requires people to use LeaveHomeSafe when entering government facilities, which has led to widespread discontent among the retail and catering industries. If the government insists on providing a peace of mind to all citizens, I suggest that it should first lift the restriction on gathering and increase the justification for people to use LeaveHomeSafe.”**

# POP



---

HONG KONG PUBLIC OPINION PROGRAM

HONG KONG PUBLIC OPINION RESEARCH INSTITUTE

香港民意研究所 之 香港民意研究計劃

---

**“We Hongkongers” Panel Survey**

**Latest Results**

**November 5, 2021**

# Contact Information - “We Hongkongers” Panel Survey

8

	<b>HKPOP Panel</b>
Date of survey	November 1, 3pm – November 4, 3pm
Survey method	Online survey
Target population	Hong Kong residents aged 12+
Total sample size	5,620
Response rate	6.3%
Sampling error	Sampling error of percentages at +/-1% at 95% confidence level
Weighting method	The figures are rim-weighted according to 1) gender-age distribution, educational attainment (highest level attended) distribution, economic activity status distribution of Hong Kong population and by District Councils population figures from Census and Statistics Department; 2) Voting results of District Councils Election from Registration and Electoral Office; 3) rating distribution of Chief Executive from regular tracking surveys.



# Survey Result - “We Hongkongers” Panel Survey

9

- Latest survey period: 1-4/11/2021; Last survey date: 10-13/5/2021
- **Question: Q1** In general, how much effort do you think the management of various universities in Hong Kong are paying to protect academic freedom?

	Pro-democracy camp supporters (n=4,767)	Non-pro-democracy camp supporters* (n=596)	Combined^ (n=5,363)
A lot of effort	1% (--)	19% (▼1%)	14% (▲1%)
Quite some effort	5% (--)	29% (▲7%)	22% (▲6%)
Half-half	16% (▼2%)	10% (▼10%)	12% (▼7%)
Not much effort	30% (▲3%)	15% (▲2%)	19% (▲2%)
Very little effort / No effort at all	41% (▼4%)	16% (--)	24% (▼3%)
Don't know / hard to say	8% (▲3%)	11% (▲2%)	10% (▲2%)
Mean†	1.9 (--)	3.2 (--)	2.8 (▲0.1)

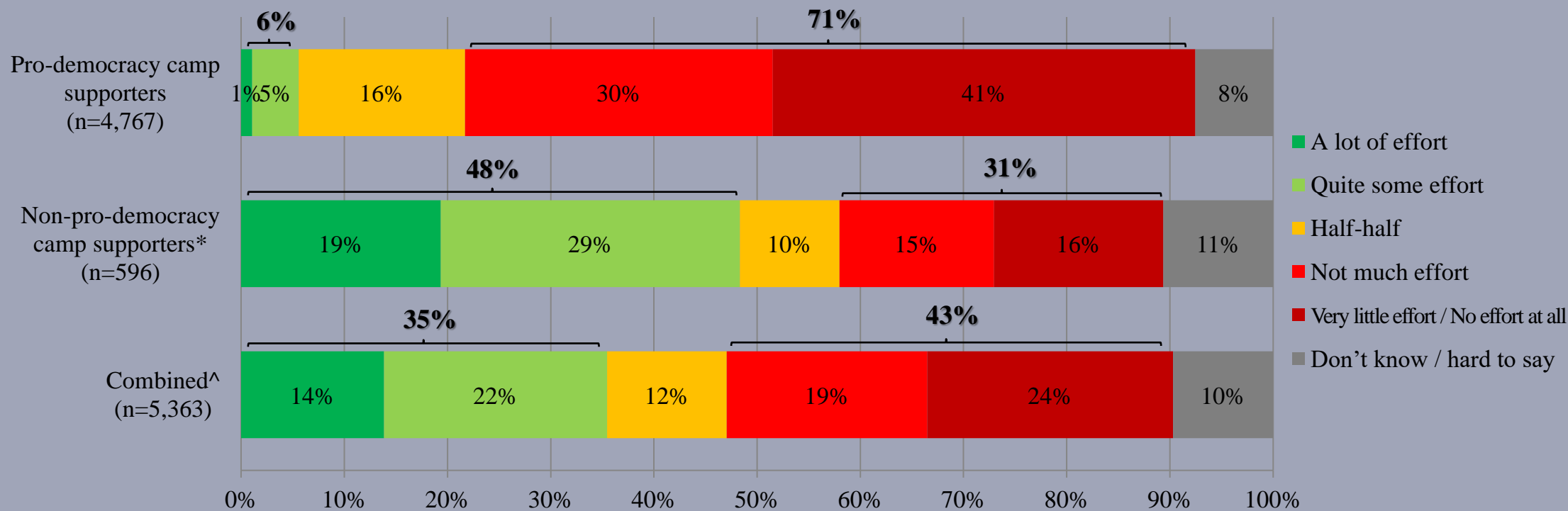
\* Include: pro-establishment camp supporters, centrist supporters, no political inclination / politically neutral / do not belong to any camp

^ The aggregated figures come from adjusting the by-group weighted figures using ratio of “pan-democratic” vs “non-pan-democratic” collected in regular tracking survey.

† The mean value is calculated by quantifying all individual responses into 1, 2, 3, 4, 5 marks according to their degree of positive level, where 1 is the lowest and 5 the highest, and then calculate the sample mean.

# Survey Result - “We Hongkongers” Panel Survey

- **Latest survey period: 1-4/11/2021; Last survey date: 10-13/5/2021**
- **Question: Q1 In general, how much effort do you think the management of various universities in Hong Kong are paying to protect academic freedom?**



\* Include: pro-establishment camp supporters, centrist supporters, no political inclination / politically neutral / do not belong to any camp

^ The aggregated figures come from adjusting the by-group weighted figures using ratio of “pan-democratic” vs “non-pan-democratic” collected in regular tracking survey.

# Survey Result - “We Hongkongers” Panel Survey

11

- Latest survey period: 1-4/11/2021; Last survey date: 10-13/5/2021
- **Question: Q2 In general, how much restriction do you think the Hong Kong national security law has imposed on academic freedom in Hong Kong?**

	Pro-democracy camp supporters (n=4,764)	Non-pro-democracy camp supporters* (n=596)	Combined^ (n=5,360)
A lot of restriction	68% (▼9%)	21% (▼3%)	35% (▼9%)
Quite some restriction	20% (▲3%)	19% (▲5%)	19% (▲4%)
	88% (▼6%)	39% (▲1%)	54% (▼5%)
Half-half	7% (▲3%)	18% (▲2%)	15% (▲3%)
Not much restriction	4% (▲4%)	18% (▲5%)	14% (▲6%)
Very little restriction / No restriction at all	1% (▼1%)	23% (▼5%)	16% (▼2%)
	6% (▲3%)	41% (▲1%)	31% (▲4%)
Don't know / hard to say	<1% (--)	1% (▼3%)	1% (▼2%)
Mean†	1.5 (▲0.2)	3.0 (--)	2.6 (▲0.2)

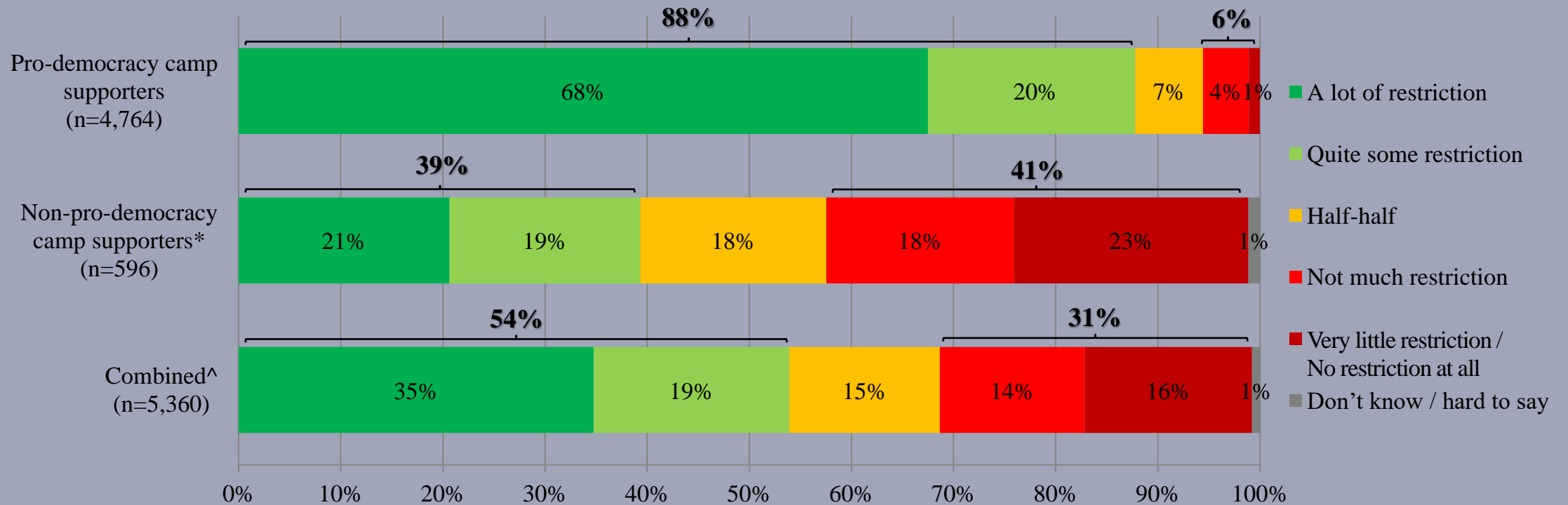
\* Include: pro-establishment camp supporters, centrist supporters, no political inclination / politically neutral / do not belong to any camp

^ The aggregated figures come from adjusting the by-group weighted figures using ratio of “pan-democratic” vs “non-pan-democratic” collected in regular tracking survey.

† The mean value is calculated by quantifying all individual responses into 1, 2, 3, 4, 5 marks according to their degree of positive level, where 1 is the lowest and 5 the highest, and then calculate the sample mean.

# Survey Result - “We Hongkongers” Panel Survey

- Latest survey period: 1-4/11/2021; Last survey date: 10-13/5/2021
- **Question: Q2 In general, how much restriction do you think the Hong Kong national security law has imposed on academic freedom in Hong Kong?**



\* Include: pro-establishment camp supporters, centrist supporters, no political inclination / politically neutral / do not belong to any camp

^ The aggregated figures come from adjusting the by-group weighted figures using ratio of “pan-democratic” vs “non-pan-democratic” collected in regular tracking survey.