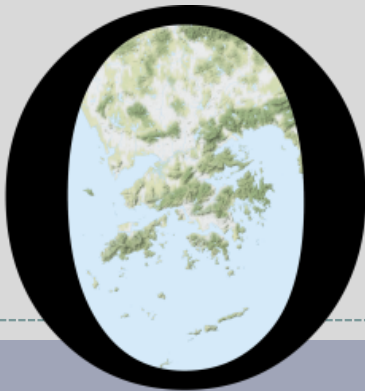


POP



HONG KONG PUBLIC OPINION PROGRAM

HONG KONG PUBLIC OPINION RESEARCH INSTITUTE

香港民意研究所 之 香港民意研究計劃

“We Hongkongers” Panel Survey

Latest Results

October 8, 2021

POP



HONG KONG PUBLIC OPINION PROGRAM

HONG KONG PUBLIC OPINION RESEARCH INSTITUTE

香港民意研究所 之 香港民意研究計劃

限聚指數

Group Gathering Prohibition Index

8/10/2021

樣本資料 - 限聚指數基準調查

Contact Information - Group Gathering Prohibition Index Benchmark Survey

3

	香港民研意見群組成員 HKPOP Panel
調查日期 Survey date	13/9 15:00 – 20/9 15:00
調查方法 Survey method	以電郵接觸群組成員，並於網上完成調查 Online survey
訪問對象 Target population	十二歲或以上的香港市民 Hong Kong residents aged 12+
總成功樣本 Total sample size	6,210
回應比率 Response rate	6.8%
抽樣誤差 Sampling error	95% 置信水平，百分比誤差 +/-1% Sampling error of percentages at +/-1% at 95% confidence level
加權方法 Weighting method	按照1) 政府統計處提供的全港人口年齡及性別分佈統計數字、各區議會人口數字； 2) 選舉事務處提供的區議會選舉結果；3) 常規調查中的特首評分分佈數字，以 「反覆多重加權法」作出調整。 The figures are rim-weighted according to 1) gender-age distribution of Hong Kong population and by District Councils population figures from Census and Statistics Department; 2) Voting results of District Councils Election from Registration and Electoral Office; 3) rating distribution of Chief Executive from regular tracking surveys.

限聚指數

Group Gathering Prohibition Index

4

- **最新調查日期 Latest survey date: 13-20/9/2021 (N=6,210)**
- **上次調查日期 Last survey date: 16-23/8/2021 (N=7,456)**
- **上上次調查日期 Second last survey date: 16-21/7/2021 (N=5,636)**

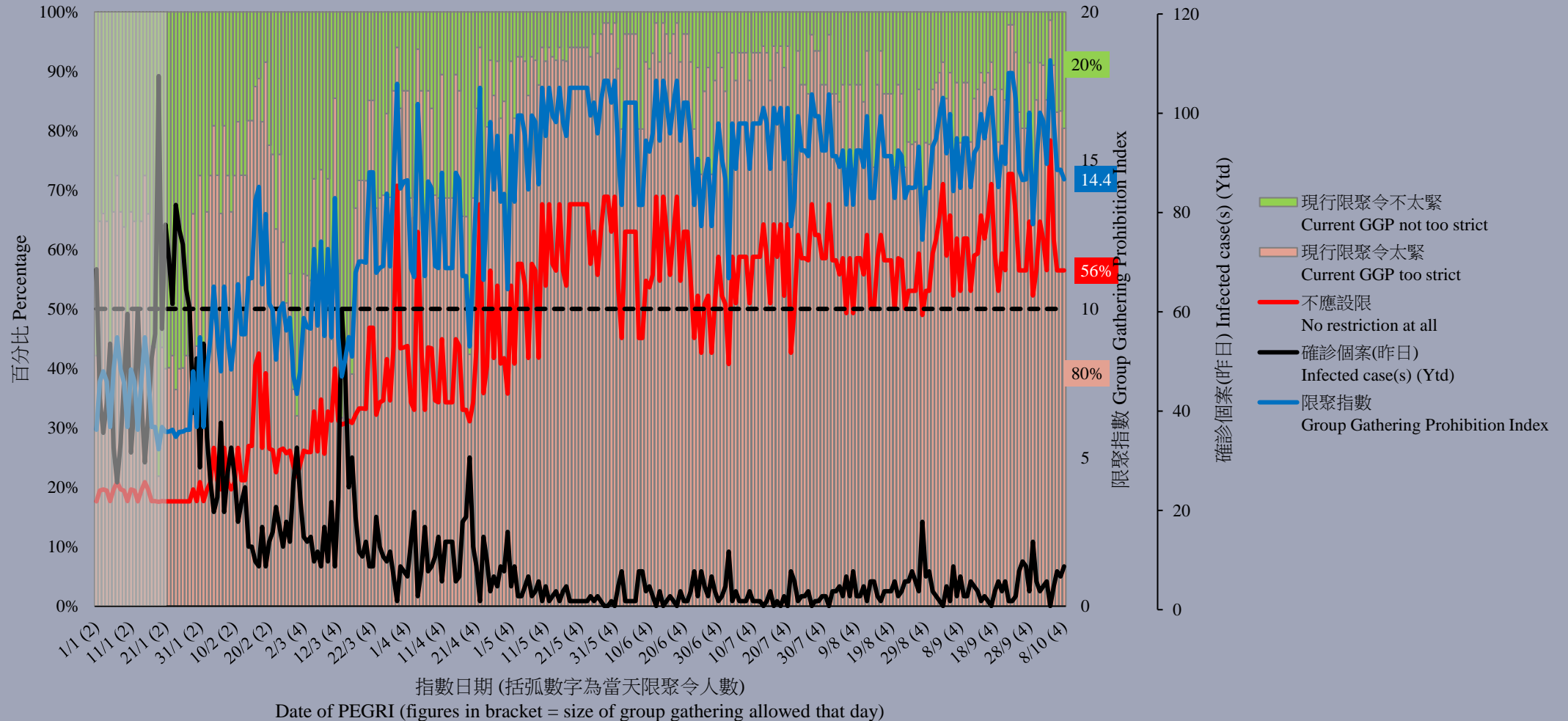
意見題目	Opinion Questions
<p>你認為香港應否無條件全面撤銷「限聚令」？</p> <ul style="list-style-type: none">▪ 應該無條件撤銷「限聚令」▪ 不應該，應視乎疫情而定▪ 不知道／很難說 <p>[追問沒有選擇應該“無條件撤銷「限聚令」”者] 你認為每天新增確診個案數應是多少，才適合將「限聚令」訂於2人？ 你認為每天新增確診個案數應是多少，才適合將「限聚令」訂於4人？ 你認為每天新增確診個案數應是多少，才適合將「限聚令」訂於8人？ 你認為每天新增確診個案數應是多少，才適合將「限聚令」訂於16人？ 你認為感染個案清零多少天後，限聚令應該全面撤銷？</p> <p>請於以下欄位列舉你認為合適的 [個案數 及 限聚人數] 組合.....</p>	<p>Do you think the regulation prohibiting gatherings of more than a specific number of people in public places should be completely lifted unconditionally in Hong Kong?</p> <ul style="list-style-type: none">▪ Yes, the ban should be lifted unconditionally▪ No, it should depend on the epidemic situation▪ Don't know / hard to say <p>[For respondents NOT answering “Yes, the ban should be lifted unconditionally”] How many newly confirmed cases each day should there be before it would be appropriate to prohibit gatherings of more than 2 people? How many newly confirmed cases each day should there be before it would be appropriate to prohibit gatherings of more than 4 people? How many newly confirmed cases each day should there be before it would be appropriate to prohibit gatherings of more than 8 people? How many newly confirmed cases each day should there be before it would be appropriate to prohibit gatherings of more than 16 people? After how many days of zero infection do you think the group gathering ban should be lifted altogether?</p> <p>Please list combinations of [number of cases & number of people allowed in gatherings] that you think is appropriate in the field below:</p>

調查結果 - 限聚接受程度

Survey Result – Group Gathering Prohibition Acceptance Level

5

限聚接受程度 Group Gathering Prohibition Acceptance Level



限聚指數 - 分析評論

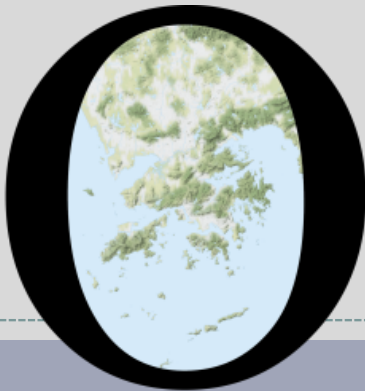
Group Gathering Prohibition Index – Commentary

6

民生大聯盟發言人章彤輝博士指出，「除了市民不斷鞭策政府加快免隔離通關外，這兩天焦點都在施政報告上。在改善民生，尤其是土地供應方面，政府的計劃是能夠回應社會需求的，對穩定社會也必然有效果。唯獨是未見有為整體經濟復甦的針對性措施，對疫後香港經濟仍然是缺乏全面扶持的決心。在今日的香港，中規中矩的施政已經不是令大家滿意的答案了。」

Dr Tung-fai Cheung, Spokesman of Alliance of Revitalizing Economy and Livelihood, observed, “In addition to the public's constant urging for the government to speed up the process of quarantine-free border crossing, the focus of these two days was on the policy address. In terms of improving people's livelihood, especially in terms of land supply, the government's plans can respond to the needs of the community and are certainly effective in stabilizing the society. The only thing is that there are no targeted measures for the overall economic recovery, and there is still a lack of determination to support the Hong Kong economy after the epidemic. In today's Hong Kong, moderate governance is no longer a satisfactory answer for everyone.”

POP



HONG KONG PUBLIC OPINION PROGRAM

HONG KONG PUBLIC OPINION RESEARCH INSTITUTE

香港民意研究所 之 香港民意研究計劃

“We Hongkongers” Panel Survey

Latest Results

October 8, 2021

Contact Information - “We Hongkongers” Panel Survey

8

	HKPOP Panel
Date of survey	October 4, 3pm – October 7, 3pm
Survey method	Online survey
Target population	Hong Kong residents aged 12+
Total sample size	6,071
Response rate	6.7%
Sampling error	Sampling error of percentages at +/-1% at 95% confidence level
Weighting method	The figures are rim-weighted according to 1) gender-age distribution, educational attainment (highest level attended) distribution, economic activity status distribution of Hong Kong population and by District Councils population figures from Census and Statistics Department; 2) Voting results of District Councils Election from Registration and Electoral Office; 3) rating distribution of Chief Executive from regular tracking surveys.

Survey Result - “We Hongkongers” Panel Survey

- Latest survey period: 4-7/10/2021
- **Question: Q1 How much do you support or oppose the pro-democracy camp’s running in the Legislative Council election in December?**

	Pro-democracy camp supporters (n=5,159)	Non-pro-democracy camp supporters* (n=623)	Combined^ (n=5,782)	
Strongly support	15%	25%	21%	
Somewhat support	11%	19%	16%	
	} 25%		} 37%	
Half-half	13%		18%	
Somewhat oppose	13%	12%	12%	
Strongly oppose	40%	18%	25%	
	} 53%		} 38%	
Don’t know / hard to say	9%		7%	
Mean†	2.4		3.0	

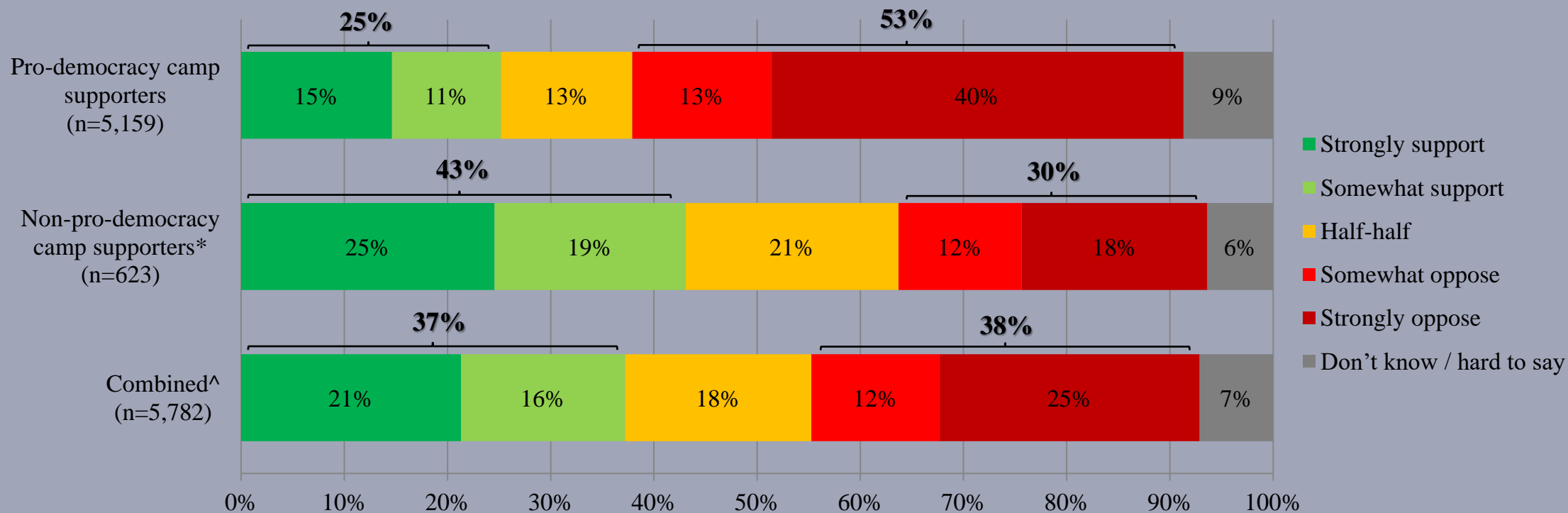
* Include: pro-establishment camp supporters, centrist supporters, no political inclination / politically neutral / do not belong to any camp

^ The aggregated figures come from adjusting the by-group weighted figures using ratio of “pan-democratic” vs “non-pan-democratic” collected in regular tracking survey.

† The mean value is calculated by quantifying all individual responses into 1, 2, 3, 4, 5 marks according to their degree of positive level, where 1 is the lowest and 5 the highest, and then calculate the sample mean.

Survey Result - “We Hongkongers” Panel Survey

- **Latest survey period: 4-7/10/2021**
- **Question: Q1 How much do you support or oppose the pro-democracy camp’s running in the Legislative Council election in December?**



* Include: pro-establishment camp supporters, centrist supporters, no political inclination / politically neutral / do not belong to any camp

^ The aggregated figures come from adjusting the by-group weighted figures using ratio of “pan-democratic” vs “non-pan-democratic” collected in regular tracking survey.

Survey Result - “We Hongkongers” Panel Survey

- Latest survey period: 4-7/10/2021
- **Question: Q2 If the pro-democracy camp tries to run in the election, how many of them do you think can pass the candidate eligibility review to run in the election?**

	Pro-democracy camp supporters (n=5,160)		Non-pro-democracy camp supporters* (n=623)		Combined^ (n=5,783)	
All of them can pass through	<1%	} 3%	<1%	} 14%	<1%	} 10%
Most of them can pass through	3%		13%		10%	
About half can pass through, half cannot	4%		22%		16%	
Most of them cannot pass through	49%	} 79%	43%	} 54%	45%	} 62%
All of them cannot pass through	30%		11%		17%	
Don't know / hard to say	14%		11%		12%	
Mean†	1.8		2.4		2.2	

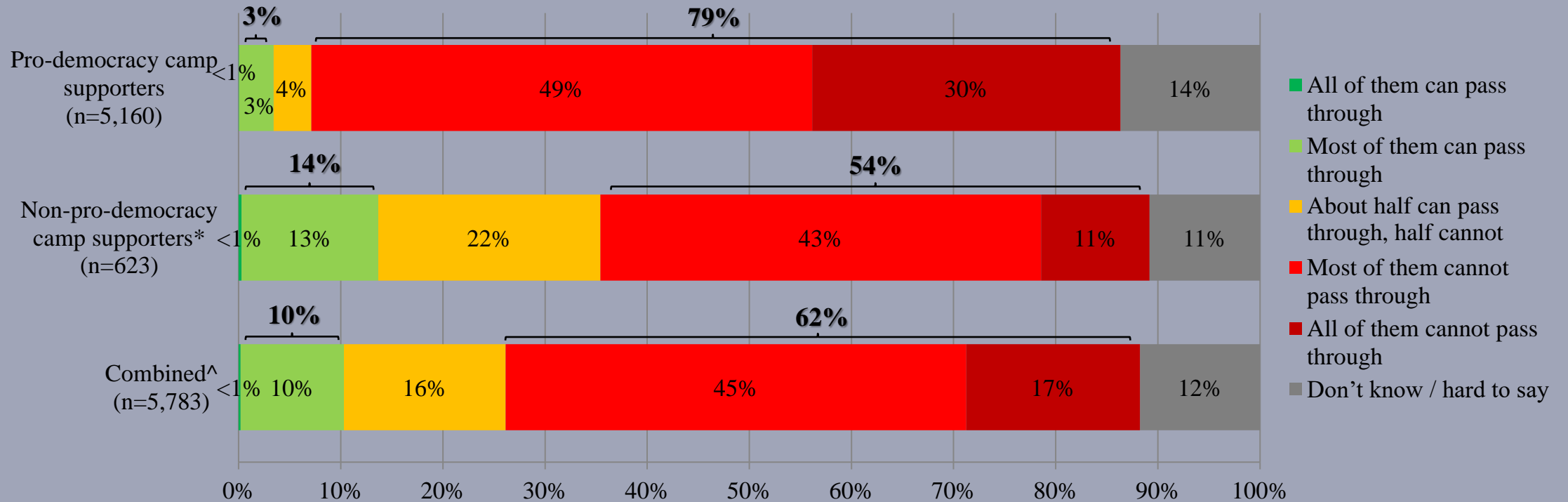
* Include: pro-establishment camp supporters, centrist supporters, no political inclination / politically neutral / do not belong to any camp

^ The aggregated figures come from adjusting the by-group weighted figures using ratio of “pan-democratic” vs “non-pan-democratic” collected in regular tracking survey.

† The mean value is calculated by quantifying all individual responses into 1, 2, 3, 4, 5 marks according to their degree of positive level, where 1 is the lowest and 5 the highest, and then calculate the sample mean.

Survey Result - “We Hongkongers” Panel Survey

- **Latest survey period: 4-7/10/2021**
- **Question: Q2 If the pro-democracy camp tries to run in the election, how many of them do you think can pass the candidate eligibility review to run in the election?**



* Include: pro-establishment camp supporters, centrist supporters, no political inclination / politically neutral / do not belong to any camp

^ The aggregated figures come from adjusting the by-group weighted figures using ratio of “pan-democratic” vs “non-pan-democratic” collected in regular tracking survey.