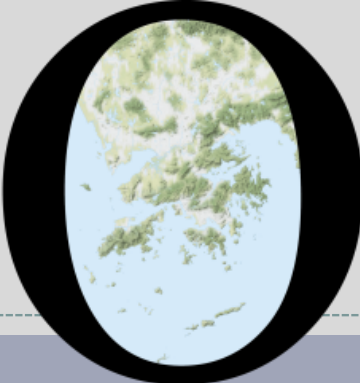


# POP



---

HONG KONG PUBLIC OPINION PROGRAM

HONG KONG PUBLIC OPINION RESEARCH INSTITUTE

香港民意研究所 之 香港民意研究計劃

---

**Community Democracy Project -**

**Community Health Module**

**Latest Results**

**September 24, 2021**

# Contact Information - Community Health Module

2

	<b>HKPOP Panel</b>	
Date of survey	September 13, 3pm – September 23, 3pm	
Survey method	Online survey	
Target population	Hong Kong residents aged 12+	
	Representative Panel	Volunteer Panel
Total sample size	664	5,604
Response rate	7.6%	6.8%
Sampling error	Sampling error of percentages at +/-4% at 95% confidence level	Sampling error of percentages at +/-1% at 95% confidence level
Weighting method	The figures are rim-weighted according to 1) gender-age distribution of Hong Kong population and by District Councils population figures from Census and Statistics Department; 2) Voting results of District Councils Election from Registration and Electoral Office; 3) rating distribution of Chief Executive from regular tracking surveys.	

# Survey Result - Community Health Module

3

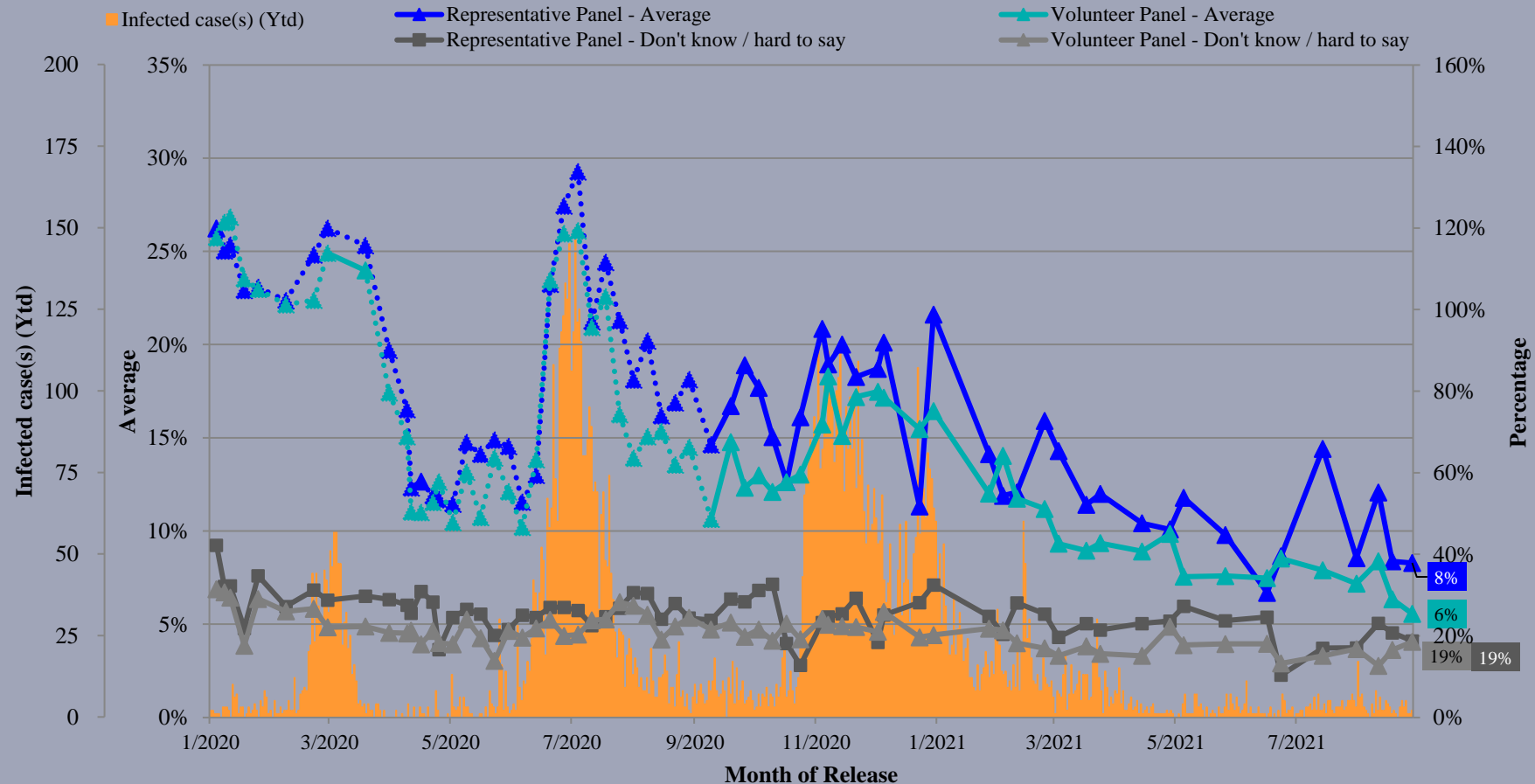
- **Latest survey period: 13-23/9/2021** (*Representative Panel N=663 Volunteer Panel N=5,599*)
- **Last survey period: 6-13/9/2021** (*Representative Panel N=761 Volunteer Panel N=6,094*)
- **Second last survey period: 26/8-6/9/2021** (*Representative Panel N=507 Volunteer Panel N=4,184*)

Opinion Question <sup>^</sup>		Representative Panel (N=663)		Volunteer Panel (N=5,599)	
		Don't know / hard to say	Average	Don't know / hard to say	Average
Q1 How likely do you think it is that you will contract novel coronavirus pneumonia over the next one month? [Logarithmic Scale]	Latest	19%	8%	19%	6%
	Last	21%	8%	17%	6%
	Second Last	23%	12%	13%	8%

<sup>^</sup> Answer options included: 0-10 rating scale, others and don't know / hard to say. Answer options changed from linear scale to logarithmic scale since Oct 2020.

# Survey Result - Community Health Module

## Assessment of the public's expected chance of COVID-19 infection



^ Answer options included: 0-10 rating scale, others and don't know / hard to say. Answer options changed from linear scale to logarithmic scale since Oct 2020.

# Survey Result - Community Health Module

5

- **Latest survey period: 13-23/9/2021** (*Representative Panel N=664 Volunteer Panel N=5,602*)
- **Last survey period: 6-13/9/2021** (*Representative Panel N=761 Volunteer Panel N=6,105*)
- **Second last survey period: 26/8-6/9/2021** (*Representative Panel N=508 Volunteer Panel N=4,185*)

Opinion Question <sup>^</sup>		Representative Panel (N=664)				Volunteer Panel (N=5,602)			
		Satisfied	Half-half	Dissatisfied	Mean <sup>†</sup>	Satisfied	Half-half	Dissatisfied	Mean <sup>†</sup>
Q2 How satisfied or dissatisfied are you with the government's performance in handling novel coronavirus pneumonia?	Latest	26%	18%	<b>56%▲*</b>	2.4	35%▲*	14%▲*	<b>50%▼*</b>	2.5▲*
	Last	29%	20%	<b>50%</b>	2.5	32%	8%	<b>59%</b>	2.4
	Second Last	26%	30%	41%	2.5	34%	6%	<b>59%</b>	2.4

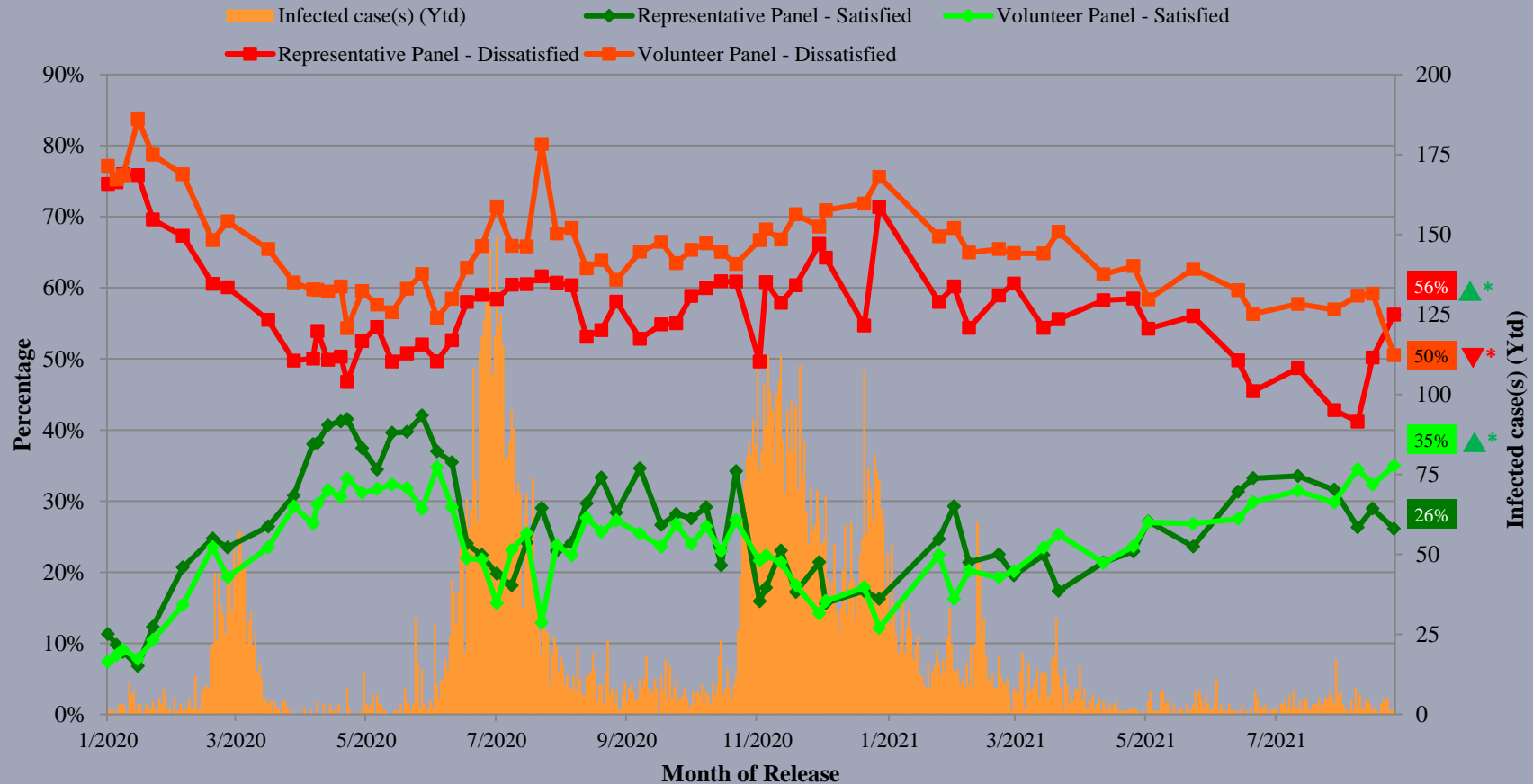
<sup>^</sup> Answer options included: very much satisfied, somewhat satisfied, half-half, somewhat dissatisfied, very much dissatisfied and don't know / hard to say

<sup>†</sup> The mean value is calculated by quantifying all individual responses into 1, 2, 3, 4, 5 marks according to their degree of positive level, where 1 is the lowest and 5 the highest, and then calculate the sample mean.

\* Significant change

# Survey Result - Community Health Module

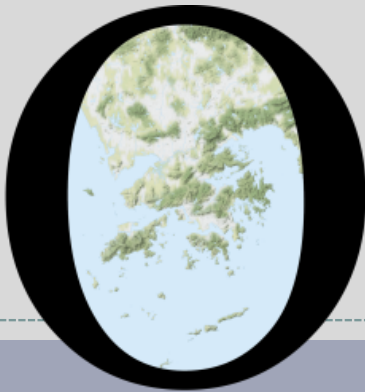
## Appraisal of HK Government's performance in handling novel coronavirus pneumonia



^ Answer options included: very much satisfied, somewhat satisfied, half-half, somewhat dissatisfied, very much dissatisfied and don't know / hard to say

\* Significant change

# POP



---

HONG KONG PUBLIC OPINION PROGRAM

HONG KONG PUBLIC OPINION RESEARCH INSTITUTE

香港民意研究所 之 香港民意研究計劃

---

**限聚指數**

**Group Gathering Prohibition Index**

**24/9/2021**

# 樣本資料 - 限聚指數基準調查

## Contact Information - Group Gathering Prohibition Index Benchmark Survey

8

	香港民研意見群組成員 HKPOP Panel
調查日期 Survey date	13/9 15:00 – 20/9 15:00
調查方法 Survey method	以電郵接觸群組成員，並於網上完成調查 Online survey
訪問對象 Target population	十二歲或以上的香港市民 Hong Kong residents aged 12+
總成功樣本 Total sample size	6,210
回應比率 Response rate	6.8%
抽樣誤差 Sampling error	95% 置信水平，百分比誤差 +/-1% Sampling error of percentages at +/-1% at 95% confidence level
加權方法 Weighting method	按照1) 政府統計處提供的全港人口年齡及性別分佈統計數字、各區議會人口數字； 2) 選舉事務處提供的區議會選舉結果；3) 常規調查中的特首評分分佈數字，以「反覆多重加權法」作出調整。 The figures are rim-weighted according to 1) gender-age distribution of Hong Kong population and by District Councils population figures from Census and Statistics Department; 2) Voting results of District Councils Election from Registration and Electoral Office; 3) rating distribution of Chief Executive from regular tracking surveys.



# 限聚指數

## Group Gathering Prohibition Index

9

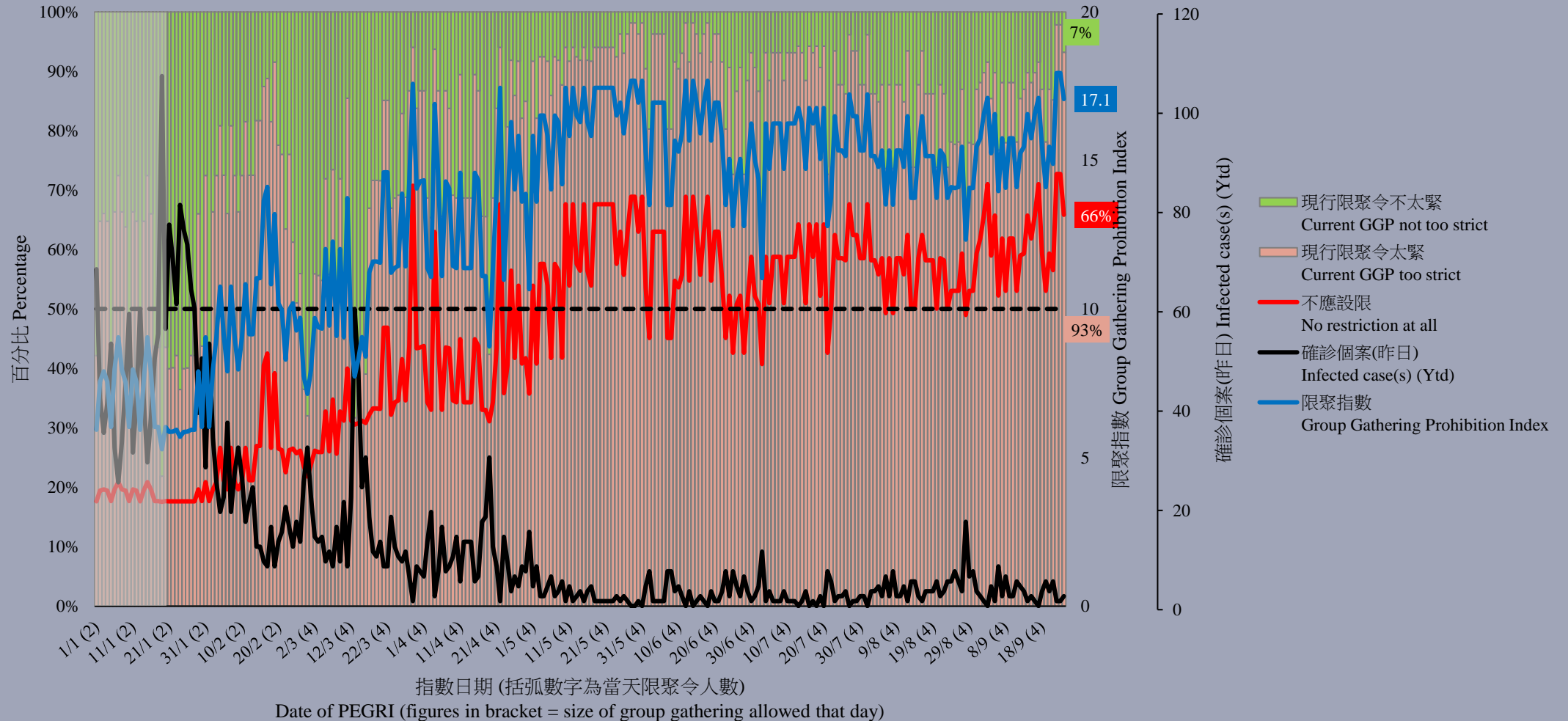
- **最新調查日期 Latest survey date: 13-20/9/2021 (N=6,210)**
- **上次調查日期 Last survey date: 16-23/8/2021 (N=7,456)**
- **上上次調查日期 Second last survey date: 16-21/7/2021 (N=5,636)**

意見題目	Opinion Questions
<p>你認為香港應否無條件全面撤銷「限聚令」？</p> <ul style="list-style-type: none"><li>▪ 應該無條件撤銷「限聚令」</li><li>▪ 不應該，應視乎疫情而定</li><li>▪ 不知道／很難說</li></ul> <p>[追問沒有選擇應該“無條件撤銷「限聚令」”者]</p> <p>你認為每天新增確診個案數應是多少，才適合將「限聚令」訂於2人？</p> <p>你認為每天新增確診個案數應是多少，才適合將「限聚令」訂於4人？</p> <p>你認為每天新增確診個案數應是多少，才適合將「限聚令」訂於8人？</p> <p>你認為每天新增確診個案數應是多少，才適合將「限聚令」訂於16人？</p> <p>你認為感染個案清零多少天後，限聚令應該全面撤銷？</p> <p>請於以下欄位列舉你認為合適的 [個案數 及 限聚人數] 組合.....</p>	<p>Do you think the regulation prohibiting gatherings of more than a specific number of people in public places should be completely lifted unconditionally in Hong Kong?</p> <ul style="list-style-type: none"><li>▪ Yes, the ban should be lifted unconditionally</li><li>▪ No, it should depend on the epidemic situation</li><li>▪ Don't know / hard to say</li></ul> <p>[For respondents NOT answering “Yes, the ban should be lifted unconditionally”]</p> <p>How many newly confirmed cases each day should there be before it would be appropriate to prohibit gatherings of more than 2 people?</p> <p>How many newly confirmed cases each day should there be before it would be appropriate to prohibit gatherings of more than 4 people?</p> <p>How many newly confirmed cases each day should there be before it would be appropriate to prohibit gatherings of more than 8 people?</p> <p>How many newly confirmed cases each day should there be before it would be appropriate to prohibit gatherings of more than 16 people?</p> <p>After how many days of zero infection do you think the group gathering ban should be lifted altogether?</p> <p>Please list combinations of [number of cases &amp; number of people allowed in gatherings] that you think is appropriate in the field below:</p>

# 調查結果 - 限聚接受程度

## Survey Result – Group Gathering Prohibition Acceptance Level

限聚接受程度 Group Gathering Prohibition Acceptance Level



民生大聯盟發言人章彤輝博士指出，「香港人受困多月，近日連串假期，終於可以本地出遊。市民上週末和中秋假期無懼風險前往郊區和離島，造成多區人山人海，甚至大澳花燈節的主辦方也因為安全理由宣布取消亮燈。可見市民受屈日久，需要外出減壓。政府如果視而不見，仍然高壓限聚，必有副作用。幸好，新冠肺炎疫情稍緩，否則又會有不少市民增添情緒病。」

**Dr Tung-fai Cheung, Spokesman of Alliance of Revitalizing Economy and Livelihood, observed, “After months of lockdown, Hong Kong peoples could finally spend some holidays in local attractions. During last weekend and the Mid-Autumn Festival, people poured out to the countryside and the outlying islands. In Tai O, the lanterns festival host even decided not to turn on the lights due to security concerns. People have been trapped so long that they need ways to relive their pressure. If the government ignores such urge and strictly enforces the gathering bans, there would be adverse consequences. Fortunately, the epidemic is subsiding, otherwise there would be many more depression cases.”**

# 參考資料：疫苗接種人口的年齡分佈

## Ref material: Vaccine Doses Administered (Age Group)

12

