

# POP



---

HONG KONG PUBLIC OPINION PROGRAM

HONG KONG PUBLIC OPINION RESEARCH INSTITUTE

香港民意研究所 之 香港民意研究計劃

---

**Community Democracy Project -**

**Community Health Module**

**Latest Results**

**July 31, 2020**

# Contact Information - Community Health Module

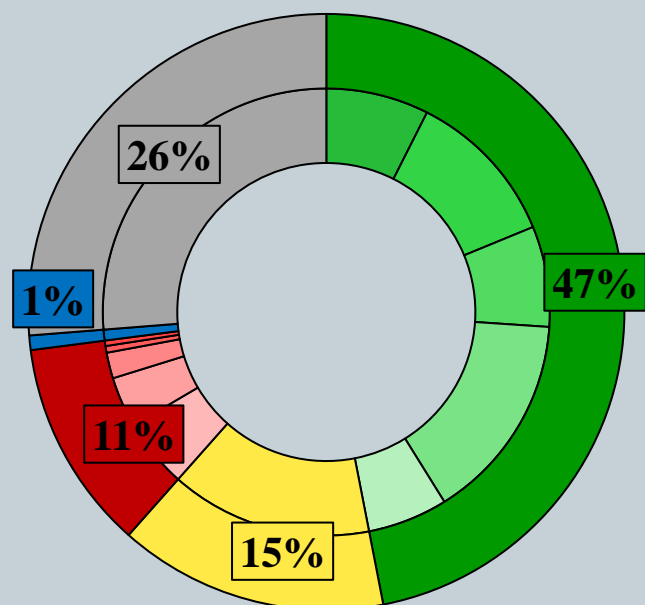
2

	<b>HKPOP Panel</b>	
Date of survey	July 23, 3pm – July 30, 3pm	
Survey method	Online survey	
Target population	Hong Kong residents aged 12+	
	Representative Panel	Volunteer Panel
Total sample size	840	8,461
Response rate	10.7%	12.6%
Sampling error	Sampling error of percentages at +/-3% at 95% confidence level	Sampling error of percentages at +/-1% at 95% confidence level
Weighting method	The figures are rim-weighted according to 1) gender-age distribution of Hong Kong population and by District Councils population figures from Census and Statistics Department; 2) Voting results of District Councils Election from Registration and Electoral Office; 3) rating distribution of Chief Executive from regular tracking surveys.	

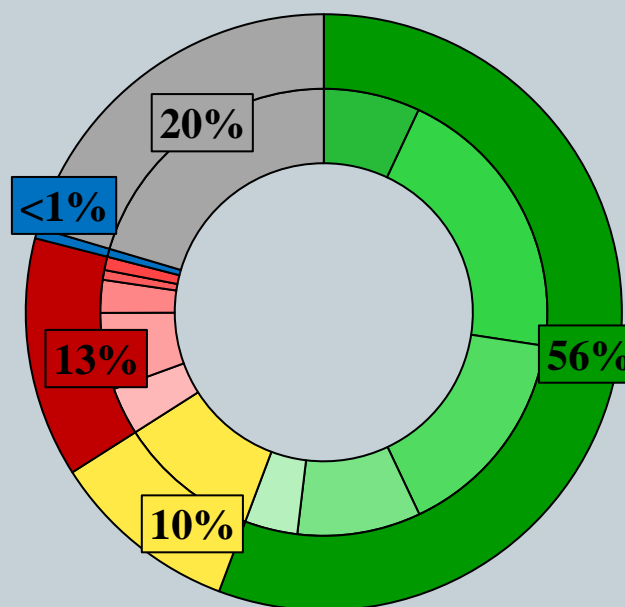
# Survey Result - Community Health Module

3

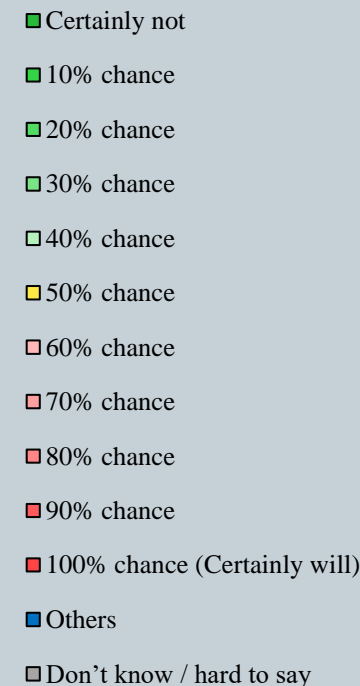
- Latest survey period: 23-30/7/2020
- Question: How likely do you think it is that you will contract novel coronavirus pneumonia over the next one month?



Representative Panel



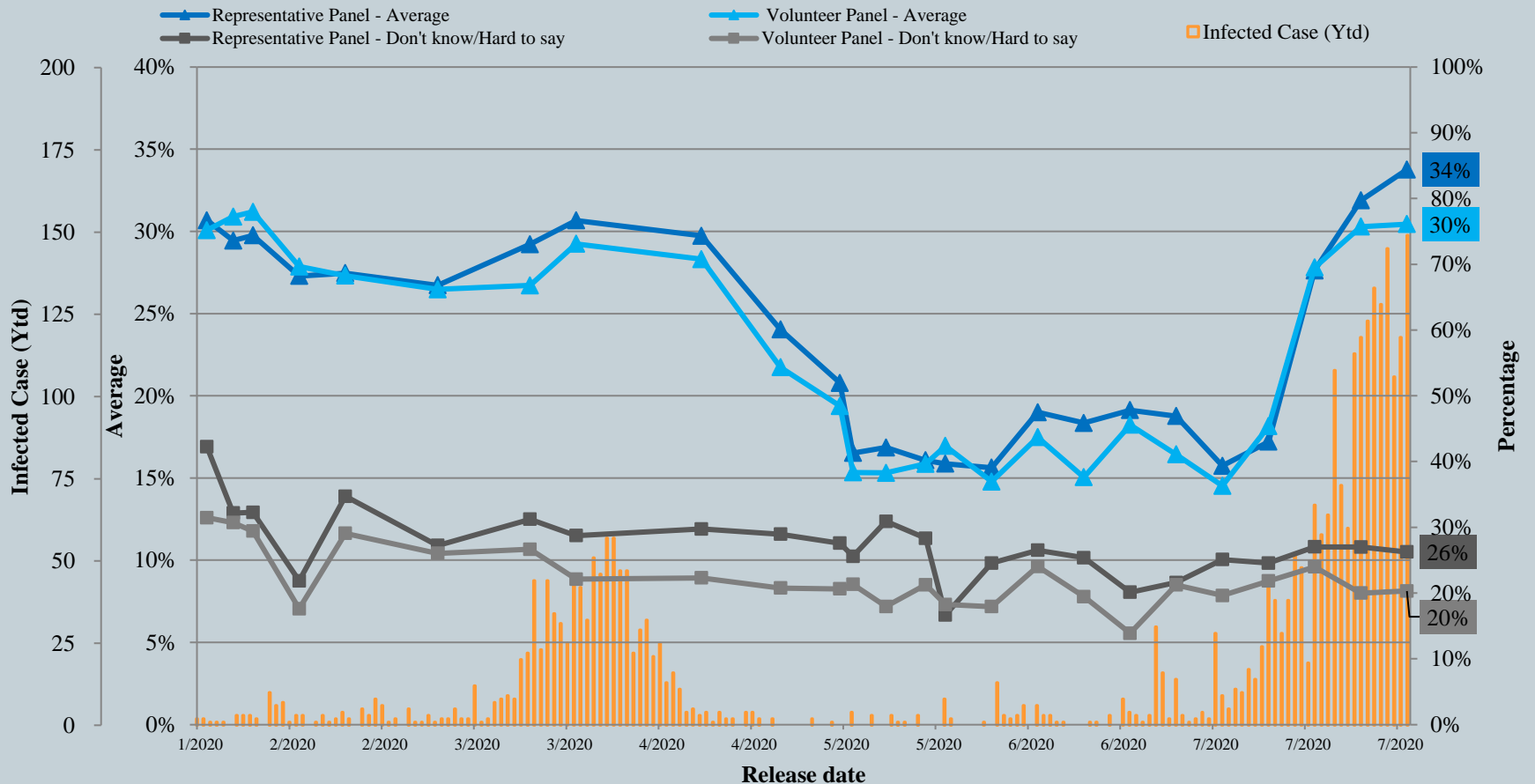
Volunteer Panel



^ Answer options included: 0-10 rating scale, others and don't know / hard to say.

# Survey Result - Community Health Module

## Assessment of the public's expected chance of COVID-19 infection



^ Answer options included: 0-10 rating scale, others and don't know / hard to say.

\* Significant change

# Survey Result - Community Health Module

6

- **Latest survey period: 23-30/7/2020**
- **Last survey period: 16-23/7/2020** (*Representative Panel N=854 Volunteer Panel N=8,732*)

Opinion Question <sup>^</sup>		Representative Panel (N=840)				Volunteer Panel (N=8,453)			
		Satisfied	Half-half	Dissatisfied	Mean <sup>†</sup>	Satisfied	Half-half	Dissatisfied	Mean <sup>†</sup>
Q2 How satisfied or dissatisfied are you with the government's performance in handling novel coronavirus pneumonia?	Latest	20%	22%	<b>58%</b>	2.2	16% ▼*	13%	<b>71%</b> ▲*	1.9 ▼*
	Last	22%	19%	<b>59%</b>	2.2	22%	12%	<b>66%</b>	2.0

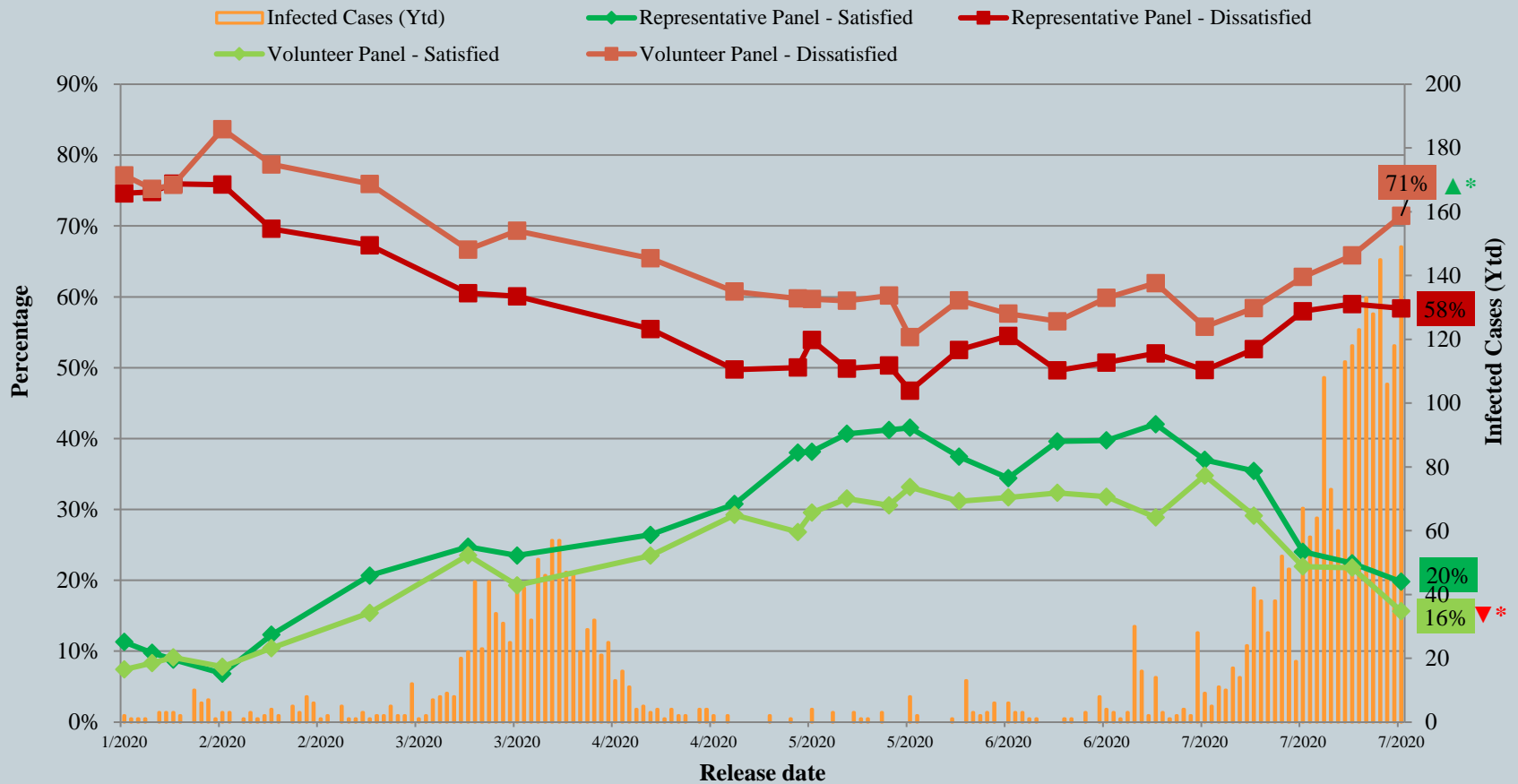
<sup>^</sup> Answer options included: very much satisfied, somewhat satisfied, half-half, somewhat dissatisfied, very much dissatisfied and don't know / hard to say

<sup>†</sup> The mean value is calculated by quantifying all individual responses into 1, 2, 3, 4, 5 marks according to their degree of positive level, where 1 is the lowest and 5 the highest, and then calculate the sample mean.

\* Significant change

# Survey Result - Community Health Module

## Appraisal of HK Government's performance in handling novel coronavirus pneumonia



^ Answer options included: very much satisfied, somewhat satisfied, half-half, somewhat dissatisfied, very much dissatisfied and don't know / hard to say.

\* Significant change

# POP



---

HONG KONG PUBLIC OPINION PROGRAM

HONG KONG PUBLIC OPINION RESEARCH INSTITUTE

香港民意研究所 之 香港民意研究計劃

---

**Community Democracy Project - Community Health Module**

**Post-Epidemic Normality Resumption Index (PENRI)**

**Latest Results**

**July 31, 2020**

# Contact Information - PENRI

10

	<b>HKPOP Panel</b>
Date of survey	July 20, 3pm – July 30, 3pm
Survey method	Online survey
Target population	Hong Kong residents aged 12+
Total sample size	9,360
Response rate	12.5%
Sampling error	Sampling error of percentages at +/-1% at 95% confidence level
Weighting method	The figures are rim-weighted according to 1) gender-age distribution of Hong Kong population and by District Councils population figures from Census and Statistics Department; 2) Voting results of District Councils Election from Registration and Electoral Office; 3) rating distribution of Chief Executive from regular tracking surveys.



# Survey Result - PENRI

11

<b>Date of Publication</b>	<b>15/7</b>	<b>16/7</b>	<b>17/7</b>	<b>18/7</b>	<b>19/7</b>	<b>20/7</b>	<b>21/7</b>	<b>22/7</b>	<b>23/7</b>	<b>24/7</b>	<b>25/7</b>	<b>26/7</b>	<b>27/7</b>	<b>28/7</b>	<b>29/7</b>	<b>30/7</b>	<b>31/7</b>
<b>Imported Cases(Ytd)</b>	8	5	4	8	4	25	7	3	11	7	8	7	25	3	8	5	4
<b>Local Infection Cases(Ytd)</b>	40	14	63	50	60	83	66	58	102	111	115	126	103	142	98	113	145
Post-Epidemic Work Resumption Index (PEWRI)	-	-	-	-	-	-	-	1.7	2.2	2.2	2.2	2.3	2.3	2.3	1.9	1.9	2.0
Post-Epidemic Public-Facilities Re-open Index (PEPRI)	-	-	-	-	-	-	-	3.7	3.6	3.5	3.4	3.4	3.4	3.4	4.4	4.7	4.7
Post-Epidemic Gathering Resumption Index (PEGRI)	12.0	11.5	11.5	10.5	10.4	10.2	10.1	8.8	9.2	9.1	9.1	9.1	9.1	9.0	10.0	10.3	10.5
Post-Epidemic Business Resumption Index (PEBRI) (catering)	-	-	-	-	-	-	-	4.4	4.8	4.8	4.8	4.8	4.8	4.8	5.9	6.0	6.0

# Survey Result - PENRI

12

