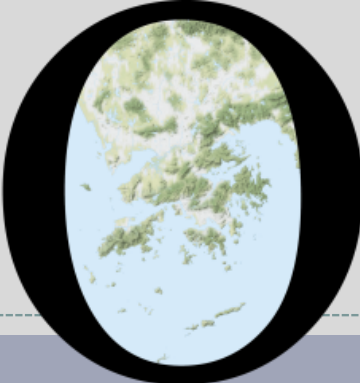


POP



HONG KONG PUBLIC OPINION PROGRAM

HONG KONG PUBLIC OPINION RESEARCH INSTITUTE

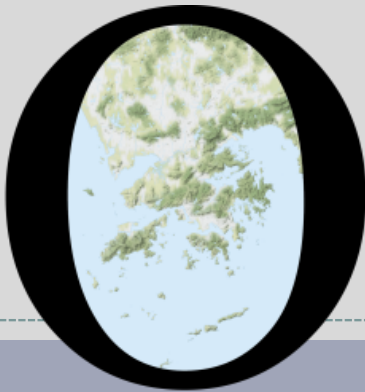
香港民意研究所 之 香港民意研究計劃

“We Hongkongers” Panel Survey

Latest Results

August 13, 2021

POP



HONG KONG PUBLIC OPINION PROGRAM

HONG KONG PUBLIC OPINION RESEARCH INSTITUTE

香港民意研究所 之 香港民意研究計劃

限聚指數

Group Gathering Prohibition Index

13/8/2021

樣本資料 - 限聚指數基準調查

Contact Information - Group Gathering Prohibition Index Benchmark Survey

3

	香港民研意見群組成員 HKPOP Panel
調查日期 Survey date	16/7 15:00 – 21/7 15:00
調查方法 Survey method	以電郵接觸群組成員，並於網上完成調查 Online survey
訪問對象 Target population	十二歲或以上的香港市民 Hong Kong residents aged 12+
總成功樣本 Total sample size	5,636
回應比率 Response rate	6.1%
抽樣誤差 Sampling error	95% 置信水平，百分比誤差 +/-1% Sampling error of percentages at +/-1% at 95% confidence level
加權方法 Weighting method	按照1) 政府統計處提供的全港人口年齡及性別分佈統計數字、各區議會人口數字； 2) 選舉事務處提供的區議會選舉結果；3) 常規調查中的特首評分分佈數字，以 「反覆多重加權法」作出調整。 The figures are rim-weighted according to 1) gender-age distribution of Hong Kong population and by District Councils population figures from Census and Statistics Department; 2) Voting results of District Councils Election from Registration and Electoral Office; 3) rating distribution of Chief Executive from regular tracking surveys.

限聚指數

Group Gathering Prohibition Index

4

- **最新調查日期 Latest survey date: 16-21/7/2021 (N=5,636)**
- **上次調查日期 Last survey date: 18-23/6/2021 (N=6,158)**
- **上上次調查日期 Second last survey date: 17-24/5/2021 (N=6,583)**

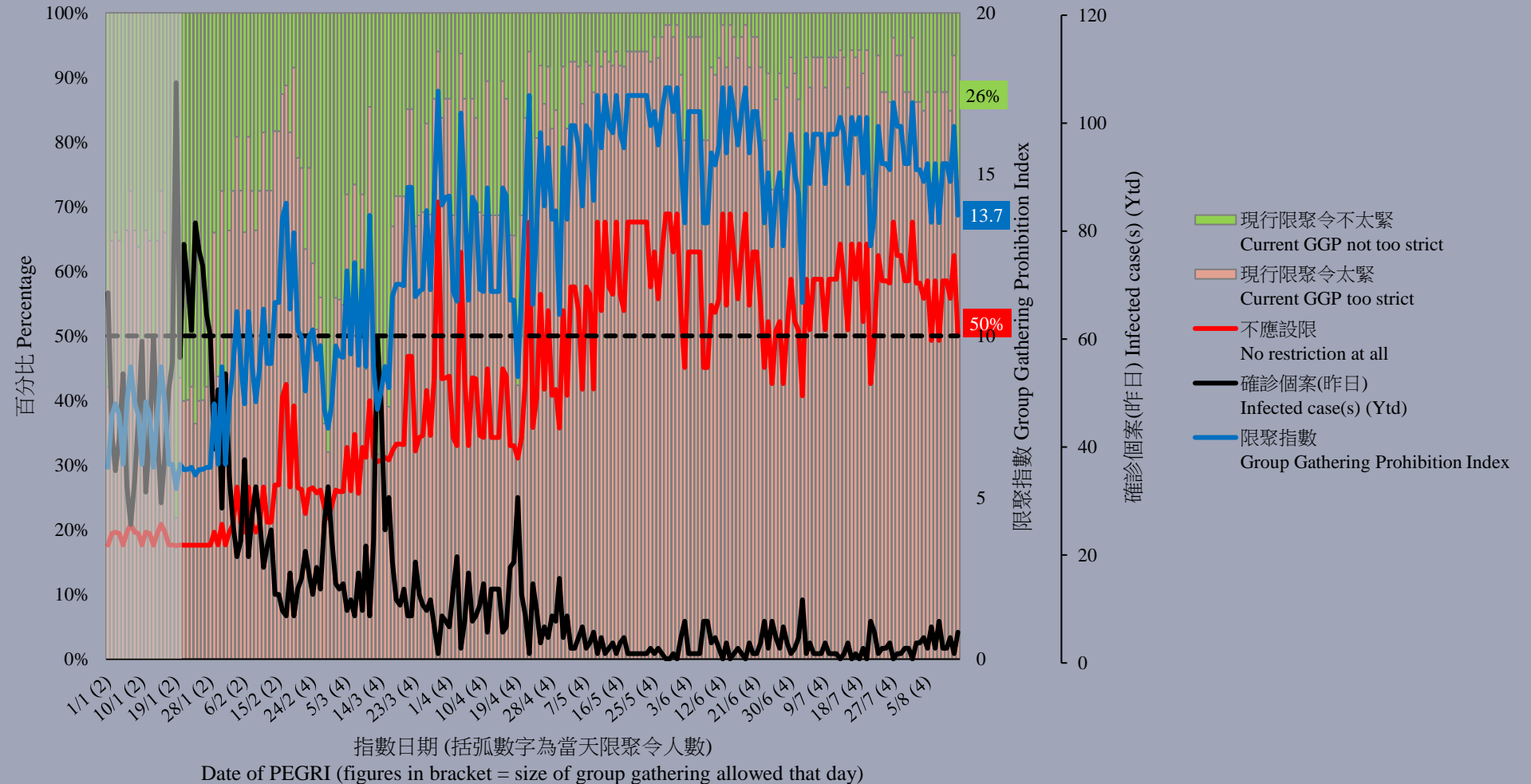
意見題目	Opinion Questions
<p>你認為香港應否無條件全面撤銷「限聚令」？</p> <ul style="list-style-type: none">▪ 應該無條件撤銷「限聚令」▪ 不應該，應視乎疫情而定▪ 不知道／很難說 <p>[追問沒有選擇應該“無條件撤銷「限聚令」”者] 你認為每天新增確診個案數應是多少，才適合將「限聚令」訂於2人？ 你認為每天新增確診個案數應是多少，才適合將「限聚令」訂於4人？ 你認為每天新增確診個案數應是多少，才適合將「限聚令」訂於8人？ 你認為每天新增確診個案數應是多少，才適合將「限聚令」訂於16人？ 你認為感染個案清零多少天後，限聚令應該全面撤銷？</p> <p>請於以下欄位列舉你認為合適的 [個案數 及 限聚人數] 組合……</p>	<p>Do you think the regulation prohibiting gatherings of more than a specific number of people in public places should be completely lifted unconditionally in Hong Kong?</p> <ul style="list-style-type: none">▪ Yes, the ban should be lifted unconditionally▪ No, it should depend on the epidemic situation▪ Don't know / hard to say <p>[For respondents NOT answering “Yes, the ban should be lifted unconditionally”] How many newly confirmed cases each day should there be before it would be appropriate to prohibit gatherings of more than 2 people? How many newly confirmed cases each day should there be before it would be appropriate to prohibit gatherings of more than 4 people? How many newly confirmed cases each day should there be before it would be appropriate to prohibit gatherings of more than 8 people? How many newly confirmed cases each day should there be before it would be appropriate to prohibit gatherings of more than 16 people? After how many days of zero infection do you think the group gathering ban should be lifted altogether?</p> <p>Please list combinations of [number of cases & number of people allowed in gatherings] that you think is appropriate in the field below:</p>

調查結果 - 限聚接受程度

Survey Result – Group Gathering Prohibition Acceptance Level

5

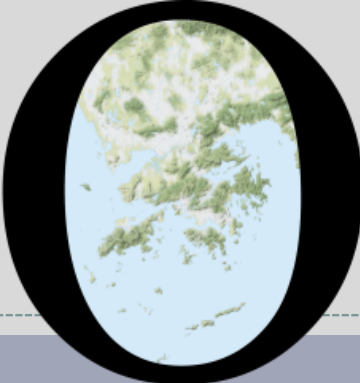
限聚接受程度 Group Gathering Prohibition Acceptance Level



香港教育中心商會副主席任偉豪指出：「美食博覽昨天開始，會場內人山人海。有了先前書展的經驗，相信香港人已經習慣了在人群之中做好防疫措施。這是一個好現象，證明了只要做好邊境防疫，其實人群聚集的危險性也不大。因此本人希望政府能進一步防寬限聚措施。」

Vice Chairman of The Hong Kong Chamber of Education Centres Yam Wai Ho observed, “The food expo started yesterday, and the venue was crowded with people. With the experience of book fair, I think Hong Kong people have got used to taking epidemic preventive measures in the crowd. This is a good sign, it proves that as long as there is good border control, the danger of crowd gathering is not too high. Therefore, I hope the government can further relax the gathering ban.”

POP



HONG KONG PUBLIC OPINION PROGRAM

HONG KONG PUBLIC OPINION RESEARCH INSTITUTE

香港民意研究所 之 香港民意研究計劃

“We Hongkongers” Panel Survey

Latest Results

August 13, 2021

Contact Information - “We Hongkongers” Panel Survey

8

	HKPOP Panel
Date of survey	August 2, 3pm – August 5, 3pm
Survey method	Online survey
Target population	Hong Kong residents aged 12+
Total sample size	6,092
Response rate	6.6%
Sampling error	Sampling error of percentages at +/-1% at 95% confidence level
Weighting method	The figures are rim-weighted according to 1) gender-age distribution, educational attainment (highest level attended) distribution, economic activity status distribution of Hong Kong population and by District Councils population figures from Census and Statistics Department; 2) Voting results of District Councils Election from Registration and Electoral Office; 3) rating distribution of Chief Executive from regular tracking surveys.

Survey Result - “We Hongkongers” Panel Survey

9

- Latest survey period: 2-5/8/2021
- Question: Q1 The government has announced that primary and secondary schools will first resume half-day classes in September, while full-day class resumption will wait until 70% of all teachers and students have been vaccinated. How much do you support or oppose this policy?

	Pro-democracy camp supporters (n=5,206)	Non-pro-democracy camp supporters* (n=596)	Combined^ (n=5,802)
Strongly support	2%	33%	21%
Somewhat support	6%	29%	20%
	9%	61%	41%
Half-half	26%	19%	22%
Somewhat oppose	21%	10%	14%
Strongly oppose	37%	9%	20%
	59%	19%	34%
Don't know / hard to say	7%	1%	3%
Mean†	2.1	3.7	3.1

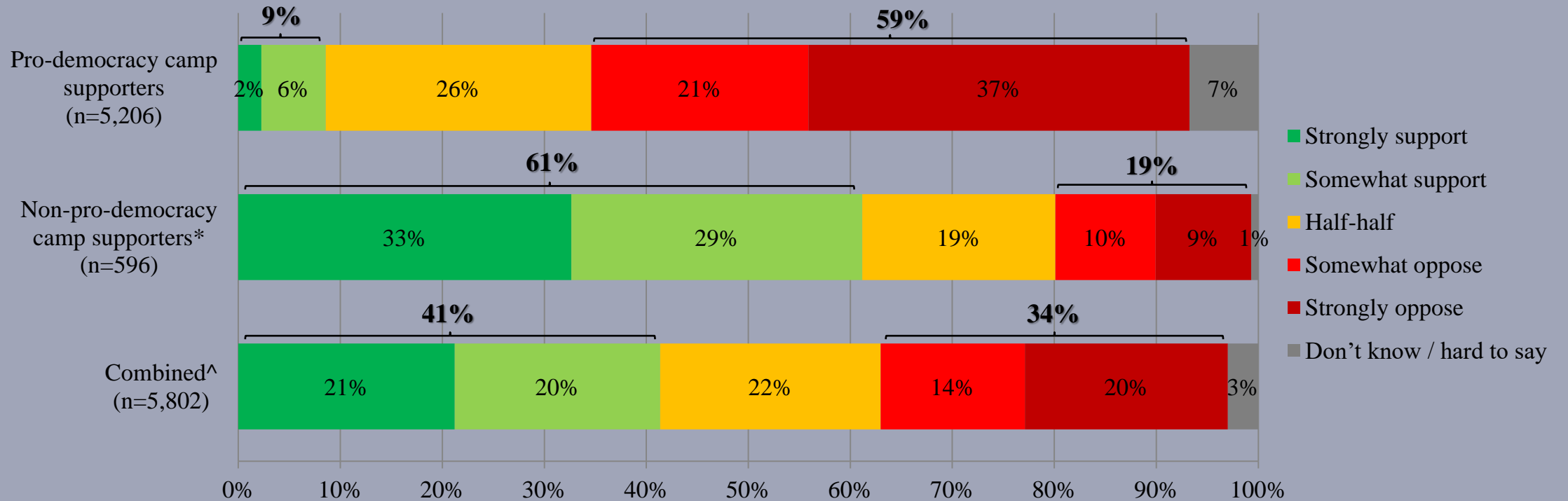
* Include: pro-establishment camp supporters, centrist supporters, no political inclination / politically neutral / do not belong to any camp

^ The aggregated figures come from adjusting the by-group weighted figures using ratio of “pan-democratic” vs “non-pan-democratic” collected in regular tracking survey.

† The mean value is calculated by quantifying all individual responses into 1, 2, 3, 4, 5 marks according to their degree of positive level, where 1 is the lowest and 5 the highest, and then calculate the sample mean.

Survey Result - “We Hongkongers” Panel Survey

- Latest survey period: 2-5/8/2021
- Question: Q1 The government has announced that primary and secondary schools will first resume half-day classes in September, while full-day class resumption will wait until 70% of all teachers and students have been vaccinated. How much do you support or oppose this policy?



* Include: pro-establishment camp supporters, centrist supporters, no political inclination / politically neutral / do not belong to any camp

^ The aggregated figures come from adjusting the by-group weighted figures using ratio of “pan-democratic” vs “non-pan-democratic” collected in regular tracking survey.

Survey Result - “We Hongkongers” Panel Survey

- Latest survey period: 2-5/8/2021
- Question: Q2 Primary and secondary schools will first resume half-day classes in September. Will this bring inconvenience to you?

	Pro-democracy camp supporters (n=5,198)	Non-pro-democracy camp supporters* (n=596)	Combined^ (n=5,794)
Yes, very inconvenient	4%	3%	3%
Yes, somewhat inconvenient	4%	5%	5%
Yes, a little inconvenient	12%	9%	10%
No	72%	80%	77%
Don't know / hard to say	8%	2%	4%

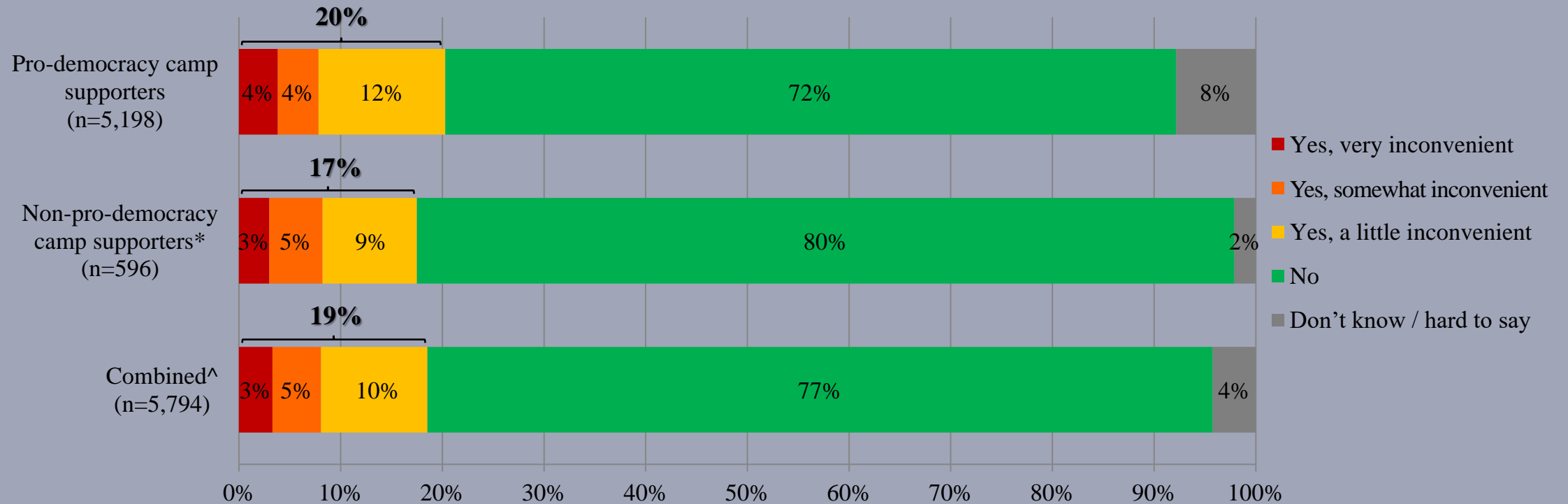
* Include: pro-establishment camp supporters, centrist supporters, no political inclination / politically neutral / do not belong to any camp

^ The aggregated figures come from adjusting the by-group weighted figures using ratio of “pan-democratic” vs “non-pan-democratic” collected in regular tracking survey.

Survey Result - “We Hongkongers” Panel Survey

12

- Latest survey period: 2-5/8/2021
- Question: Q2 Primary and secondary schools will first resume half-day classes in September. Will this bring inconvenience to you?



* Include: pro-establishment camp supporters, centrist supporters, no political inclination / politically neutral / do not belong to any camp

^ The aggregated figures come from adjusting the by-group weighted figures using ratio of “pan-democratic” vs “non-pan-democratic” collected in regular tracking survey.

Survey Result - “We Hongkongers” Panel Survey

- Latest survey period: 2-5/8/2021
- Question: Q3 How much do you support or oppose full-day class resumption for primary and secondary schools in September?

	Pro-democracy camp supporters (n=5,210)	Non-pro-democracy camp supporters* (n=597)	Combined^ (n=5,807)
Strongly support	27%	23%	25%
Somewhat support	24%	23%	23%
	52%	46%	48%
Half-half	25%	33%	30%
Somewhat oppose	9%	14%	12%
Strongly oppose	5%	4%	4%
	14%	18%	16%
Don't know / hard to say	9%	3%	5%
Mean†	3.7	3.5	3.6

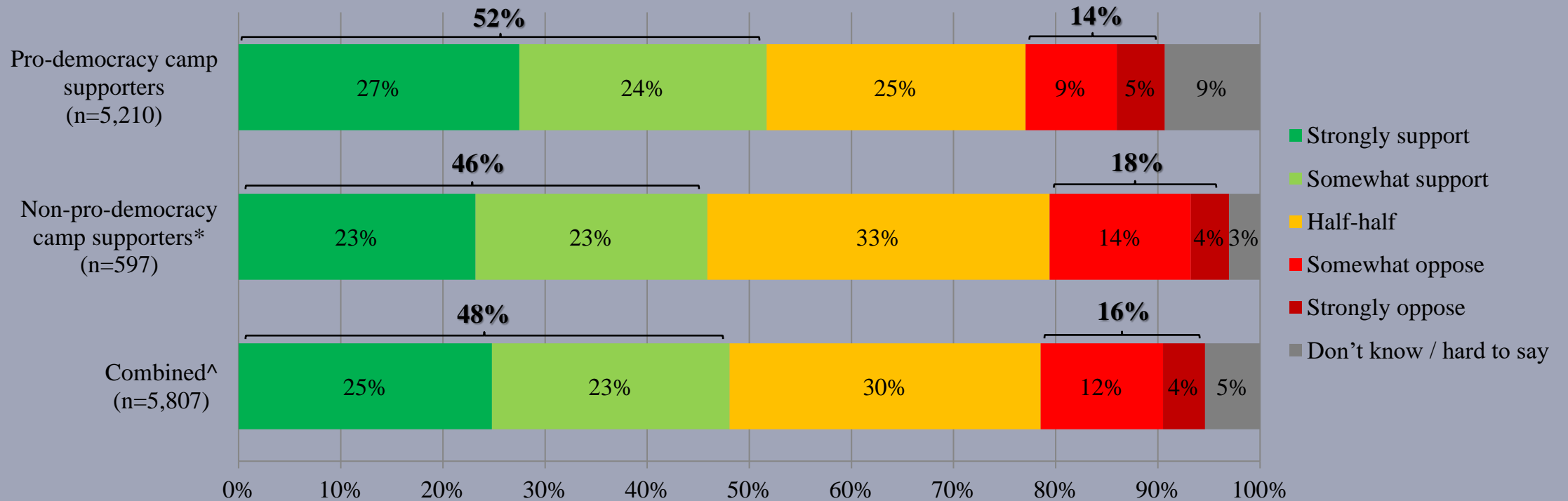
* Include: pro-establishment camp supporters, centrist supporters, no political inclination / politically neutral / do not belong to any camp

^ The aggregated figures come from adjusting the by-group weighted figures using ratio of “pan-democratic” vs “non-pan-democratic” collected in regular tracking survey.

† The mean value is calculated by quantifying all individual responses into 1, 2, 3, 4, 5 marks according to their degree of positive level, where 1 is the lowest and 5 the highest, and then calculate the sample mean.

Survey Result - “We Hongkongers” Panel Survey

- Latest survey period: 2-5/8/2021
- Question: Q3 How much do you support or oppose full-day class resumption for primary and secondary schools in September?



* Include: pro-establishment camp supporters, centrist supporters, no political inclination / politically neutral / do not belong to any camp

^ The aggregated figures come from adjusting the by-group weighted figures using ratio of “pan-democratic” vs “non-pan-democratic” collected in regular tracking survey.

Survey Result - “We Hongkongers” Panel Survey

- Latest survey period: 2-5/8/2021
- Question: Q4 Do you have any children in primary or secondary school in the 2021-22 academic year?

	Pro-democracy camp supporters (n=5,203)	Non-pro-democracy camp supporters* (n=597)	Combined^ (n=5,800)
Have children in primary school and in secondary school	2%	2%	2%
Only have children in primary school	2%	6%	5%
Only have children in secondary school	4%	8%	7%
No children in primary or secondary school	92%	83%	87%

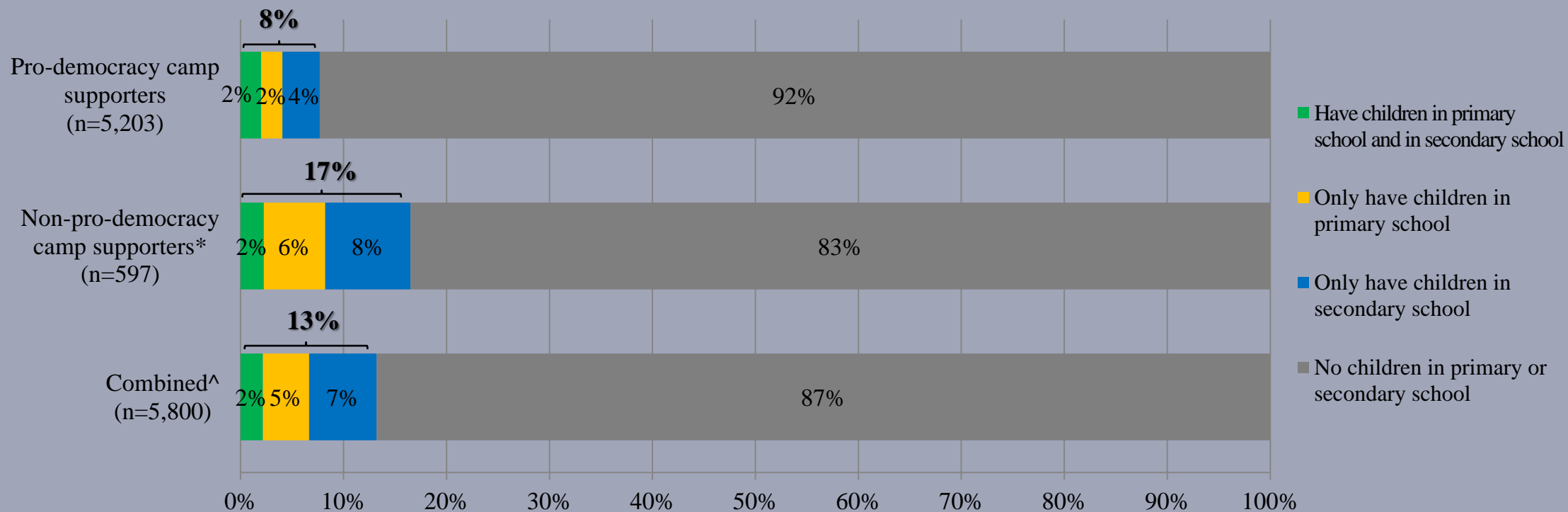
* Include: pro-establishment camp supporters, centrist supporters, no political inclination / politically neutral / do not belong to any camp

^ The aggregated figures come from adjusting the by-group weighted figures using ratio of “pan-democratic” vs “non-pan-democratic” collected in regular tracking survey.

Survey Result - “We Hongkongers” Panel Survey

16

- Latest survey period: 2-5/8/2021
- Question: Q4 Do you have any children in primary or secondary school in the 2021-22 academic year?



* Include: pro-establishment camp supporters, centrist supporters, no political inclination / politically neutral / do not belong to any camp

^ The aggregated figures come from adjusting the by-group weighted figures using ratio of “pan-democratic” vs “non-pan-democratic” collected in regular tracking survey.

Survey Result - “We Hongkongers” Panel Survey

17

Cross-tabulation Analysis

Survey Result - “We Hongkongers” Panel Survey

18

- **Cross-tabulation Analysis[#] (n=5,794)**

		Q4 Do you have any children in primary or secondary school in the 2021-22 academic year?	
		Yes	No
Q1 The government has announced that primary and secondary schools will first resume half-day classes in September, while full-day class resumption will wait until 70% of all teachers and students have been vaccinated. How much do you support or oppose this policy?	Support	63%	38%
	Half-half	16%	22%
	Oppose	21%	36%
	Don't know / hard to say	<1%	3%

[#] The values in each column add up to 100%

Survey Result - “We Hongkongers” Panel Survey

20

- **Cross-tabulation Analysis[#] (n=5,786)**

		Q4 Do you have any children in primary or secondary school in the 2021-22 academic year?	
		Yes	No
Q2 Primary and secondary schools will first resume half-day classes in September. Will this bring inconvenience to you?	Yes	65%	11%
	No	35%	84%
	Don't know / hard to say	<1%	5%

[#] The values in each column add up to 100%

Survey Result - “We Hongkongers” Panel Survey

21

- **Cross-tabulation Analysis[#] (n=5,799)**

		Q4 Do you have any children in primary or secondary school in the 2021-22 academic year?	
		Yes	No
Q3 How much do you support or oppose full-day class resumption for primary and secondary schools in September?	Support	59%	46%
	Half-half	28%	31%
	Oppose	12%	17%
	Don't know / hard to say	<1%	6%

[#] The values in each column add up to 100%