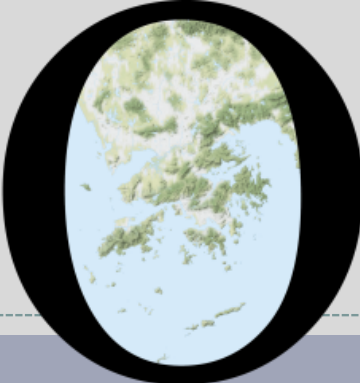


POP



HONG KONG PUBLIC OPINION PROGRAM

HONG KONG PUBLIC OPINION RESEARCH INSTITUTE

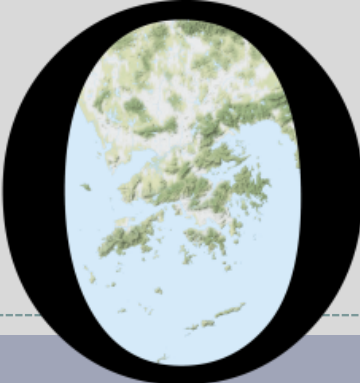
香港民意研究所 之 香港民意研究計劃

“We Hongkongers” Panel Survey

Latest Results

August 6, 2021

POP



HONG KONG PUBLIC OPINION PROGRAM

HONG KONG PUBLIC OPINION RESEARCH INSTITUTE

香港民意研究所 之 香港民意研究計劃

限聚指數

Group Gathering Prohibition Index

6/8/2021

樣本資料 - 限聚指數基準調查

Contact Information - Group Gathering Prohibition Index Benchmark Survey

3

	香港民研意見群組成員 HKPOP Panel
調查日期 Survey date	16/7 15:00 – 21/7 15:00
調查方法 Survey method	以電郵接觸群組成員，並於網上完成調查 Online survey
訪問對象 Target population	十二歲或以上的香港市民 Hong Kong residents aged 12+
總成功樣本 Total sample size	5,636
回應比率 Response rate	6.1%
抽樣誤差 Sampling error	95% 置信水平，百分比誤差 +/-1% Sampling error of percentages at +/-1% at 95% confidence level
加權方法 Weighting method	按照1) 政府統計處提供的全港人口年齡及性別分佈統計數字、各區議會人口數字； 2) 選舉事務處提供的區議會選舉結果；3) 常規調查中的特首評分分佈數字，以 「反覆多重加權法」作出調整。 The figures are rim-weighted according to 1) gender-age distribution of Hong Kong population and by District Councils population figures from Census and Statistics Department; 2) Voting results of District Councils Election from Registration and Electoral Office; 3) rating distribution of Chief Executive from regular tracking surveys.

限聚指數

Group Gathering Prohibition Index

4

- **最新調查日期 Latest survey date: 16-21/7/2021 (N=5,636)**
- **上次調查日期 Last survey date: 18-23/6/2021 (N=6,158)**
- **上上次調查日期 Second last survey date: 17-24/5/2021 (N=6,583)**

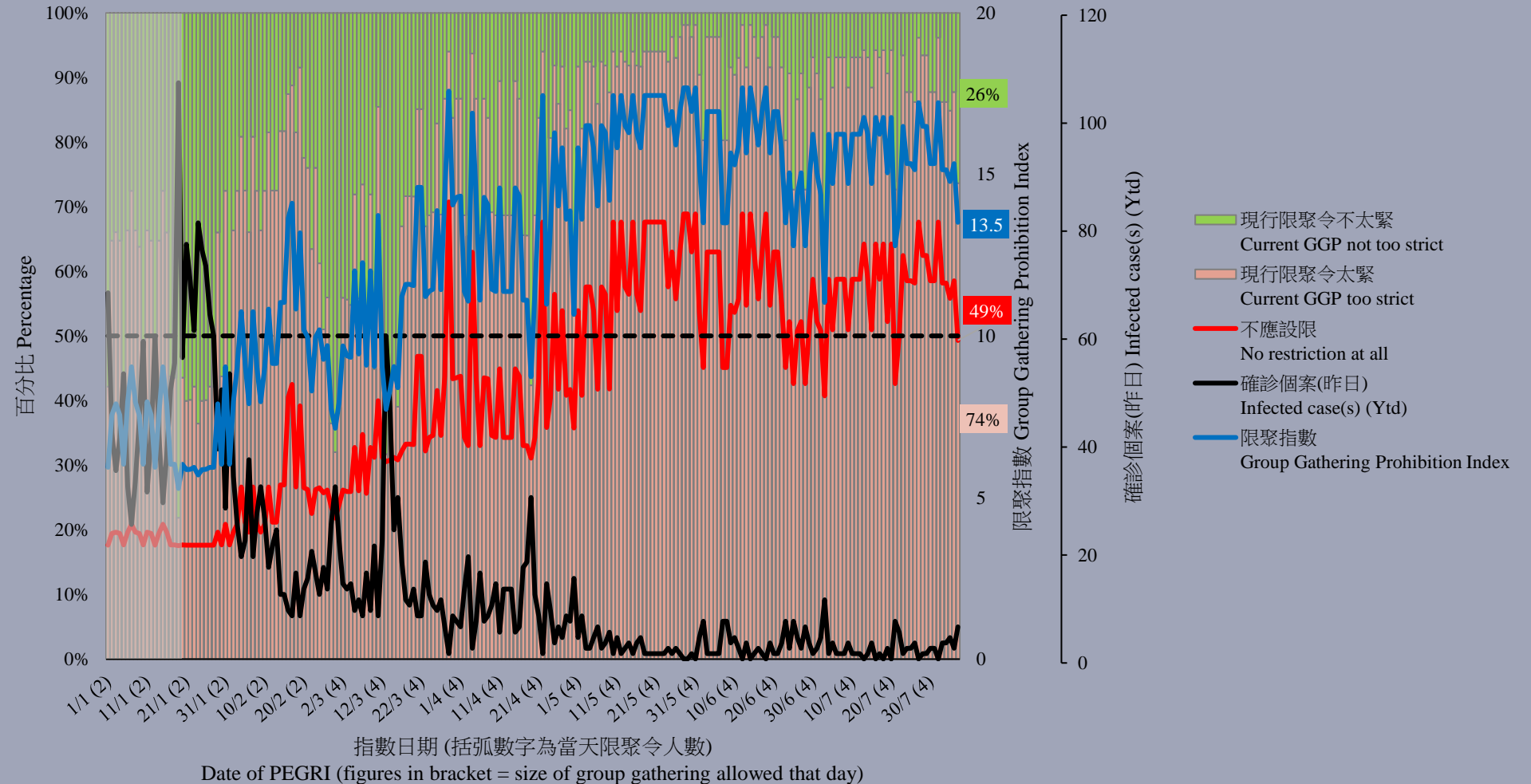
意見題目	Opinion Questions
<p>你認為香港應否無條件全面撤銷「限聚令」？</p> <ul style="list-style-type: none">▪ 應該無條件撤銷「限聚令」▪ 不應該，應視乎疫情而定▪ 不知道／很難說 <p>[追問沒有選擇應該“無條件撤銷「限聚令」”者]</p> <p>你認為每天新增確診個案數應是多少，才適合將「限聚令」訂於2人？</p> <p>你認為每天新增確診個案數應是多少，才適合將「限聚令」訂於4人？</p> <p>你認為每天新增確診個案數應是多少，才適合將「限聚令」訂於8人？</p> <p>你認為每天新增確診個案數應是多少，才適合將「限聚令」訂於16人？</p> <p>你認為感染個案清零多少天後，限聚令應該全面撤銷？</p> <p>請於以下欄位列舉你認為合適的 [個案數 及 限聚人數] 組合.....</p>	<p>Do you think the regulation prohibiting gatherings of more than a specific number of people in public places should be completely lifted unconditionally in Hong Kong?</p> <ul style="list-style-type: none">▪ Yes, the ban should be lifted unconditionally▪ No, it should depend on the epidemic situation▪ Don't know / hard to say <p>[For respondents NOT answering “Yes, the ban should be lifted unconditionally”]</p> <p>How many newly confirmed cases each day should there be before it would be appropriate to prohibit gatherings of more than 2 people?</p> <p>How many newly confirmed cases each day should there be before it would be appropriate to prohibit gatherings of more than 4 people?</p> <p>How many newly confirmed cases each day should there be before it would be appropriate to prohibit gatherings of more than 8 people?</p> <p>How many newly confirmed cases each day should there be before it would be appropriate to prohibit gatherings of more than 16 people?</p> <p>After how many days of zero infection do you think the group gathering ban should be lifted altogether?</p> <p>Please list combinations of [number of cases & number of people allowed in gatherings] that you think is appropriate in the field below:</p>

調查結果 - 限聚接受程度

Survey Result – Group Gathering Prohibition Acceptance Level

5

限聚接受程度 Group Gathering Prohibition Acceptance Level



限聚指數 - 分析評論

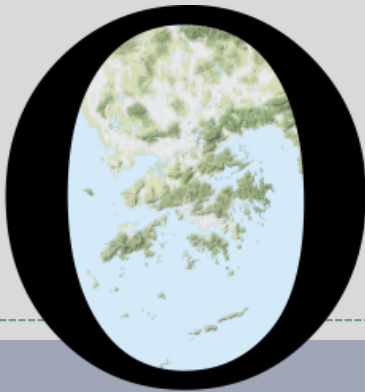
Group Gathering Prohibition Index – Commentary

6

民生大聯盟發言人章彤輝博士指出，「久守必失，近日澳門和內地均出現新冠肺炎個案，粉碎了持續清零這個理想概念。作為受傳統醫學訓練，以個體為服務對象的醫護，當然希望防止任何病例的出現，但在面對全球性疾病時，允許與病共存才是科學的社會醫學態度。同樣地，連限聚都不能保證清零，那政府為何仍然迷信限聚令呢？」

Dr Tung-fai Cheung, Spokesman of Alliance of Revitalizing Economy and Livelihood, observed, “No defence can stand forever, zero infection is considered too ideal especially when new COVID-19 cases in Macau and the mainland have spoilt their clean sheets. Medical professionals are traditionally trained to provide individual-based services, they of course welcome zero infection. However, we are now encountering a global health problem that requires us to live with the virus. If gathering ban cannot guarantee zero infection, why should our government still worship it blindly?”

POP



HONG KONG PUBLIC OPINION PROGRAM

HONG KONG PUBLIC OPINION RESEARCH INSTITUTE

香港民意研究所 之 香港民意研究計劃

“We Hongkongers” Panel Survey

Latest Results

August 6, 2021

Contact Information - “We Hongkongers” Panel Survey

8

	HKPOP Panel
Date of survey	August 2, 3pm – August 5, 3pm
Survey method	Online survey
Target population	Hong Kong residents aged 12+
Total sample size	5,916
Response rate	6.4%
Sampling error	Sampling error of percentages at +/-1% at 95% confidence level
Weighting method	The figures are rim-weighted according to 1) gender-age distribution, educational attainment (highest level attended) distribution, economic activity status distribution of Hong Kong population and by District Councils population figures from Census and Statistics Department; 2) Voting results of District Councils Election from Registration and Electoral Office; 3) rating distribution of Chief Executive from regular tracking surveys.

Survey Result - “We Hongkongers” Panel Survey

9

Overall Sample Results

Survey Result - “We Hongkongers” Panel Survey

- Latest survey period: 2-5/8/2021
- Question: Q1 How familiar are you with the new system of Election Committee Subsector Elections?

	Pro-democracy camp supporters (n=5,047)	Non-pro-democracy camp supporters* (n=586)	Combined^ (n=5,633)
Very familiar	2%	3%	3%
Somewhat familiar	5%	10%	8%
	7%	13%	11%
Half-half	20%	34%	29%
Somewhat unfamiliar	20%	26%	24%
Very unfamiliar	52%	22%	33%
	71%	48%	57%
Don't know / hard to say	1%	4%	3%
Mean†	1.8	2.4	2.2

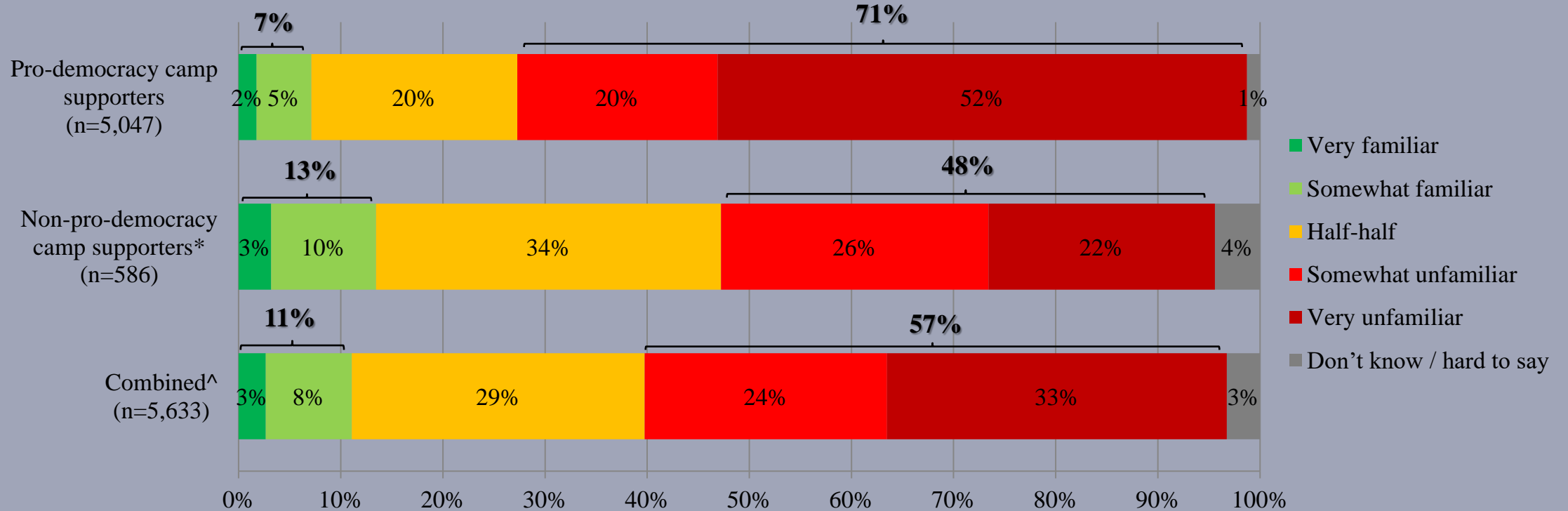
* Include: pro-establishment camp supporters, centrist supporters, no political inclination / politically neutral / do not belong to any camp

^ The aggregated figures come from adjusting the by-group weighted figures using ratio of “pan-democratic” vs “non-pan-democratic” collected in regular tracking survey.

† The mean value is calculated by quantifying all individual responses into 1, 2, 3, 4, 5 marks according to their degree of positive level, where 1 is the lowest and 5 the highest, and then calculate the sample mean.

Survey Result - “We Hongkongers” Panel Survey

- Latest survey period: 2-5/8/2021
- Question: Q1 How familiar are you with the new system of Election Committee Subsector Elections?



* Include: pro-establishment camp supporters, centrist supporters, no political inclination / politically neutral / do not belong to any camp

^ The aggregated figures come from adjusting the by-group weighted figures using ratio of “pan-democratic” vs “non-pan-democratic” collected in regular tracking survey.

Survey Result - “We Hongkongers” Panel Survey

- Latest survey period: 2-5/8/2021
- Question: Q2 Have you ever participated in the Election Committee Subsector Elections?

	Pro-democracy camp supporters (n=5,055)	Non-pro-democracy camp supporters* (n=586)	Combined^ (n=5,641)
Voted in the election	19%	34%	28%
Registered as voter (but never voted)	11%	6%	8%
Qualified to register as voter (but never registered)	7%	3%	5%
Never qualified to register as voter	53%	47%	49%
Don't know / hard to say	10%	10%	10%

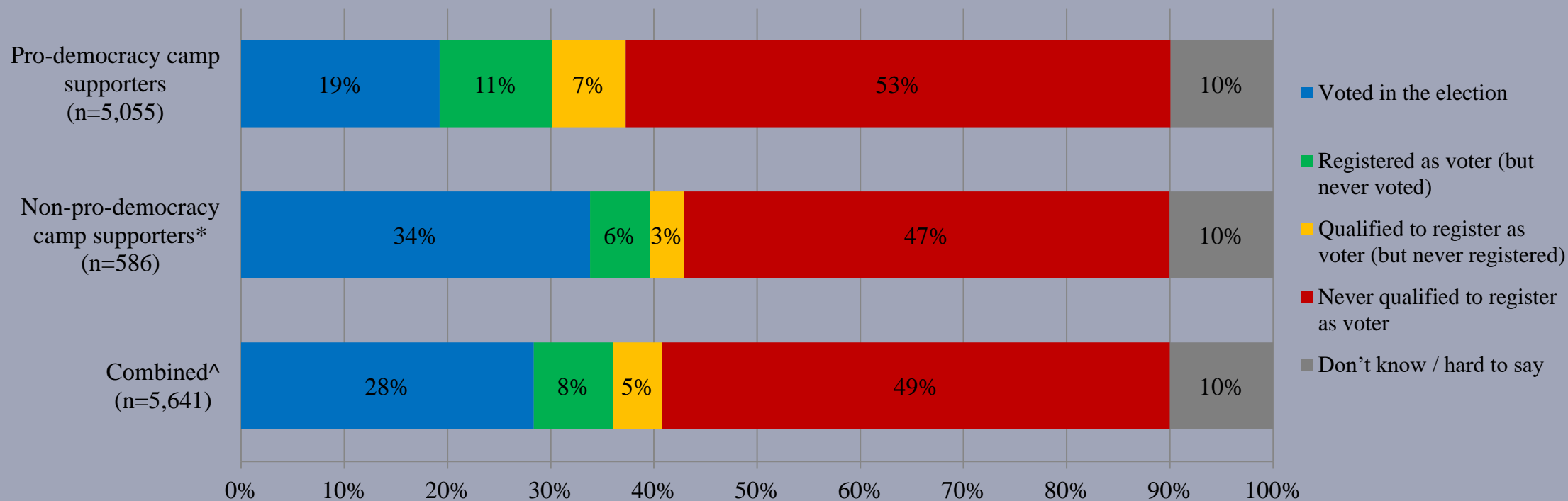
* Include: pro-establishment camp supporters, centrist supporters, no political inclination / politically neutral / do not belong to any camp

^ The aggregated figures come from adjusting the by-group weighted figures using ratio of “pan-democratic” vs “non-pan-democratic” collected in regular tracking survey.

Survey Result - “We Hongkongers” Panel Survey

13

- Latest survey period: 2-5/8/2021
- Question: Q2 Have you ever participated in the Election Committee Subsector Elections?



* Include: pro-establishment camp supporters, centrist supporters, no political inclination / politically neutral / do not belong to any camp

^ The aggregated figures come from adjusting the by-group weighted figures using ratio of “pan-democratic” vs “non-pan-democratic” collected in regular tracking survey.

Survey Result - “We Hongkongers” Panel Survey

- Latest survey period: 2-5/8/2021
- Question: Q3 Under the new system, will you be able to participate in the Election Committee Subsector Elections?

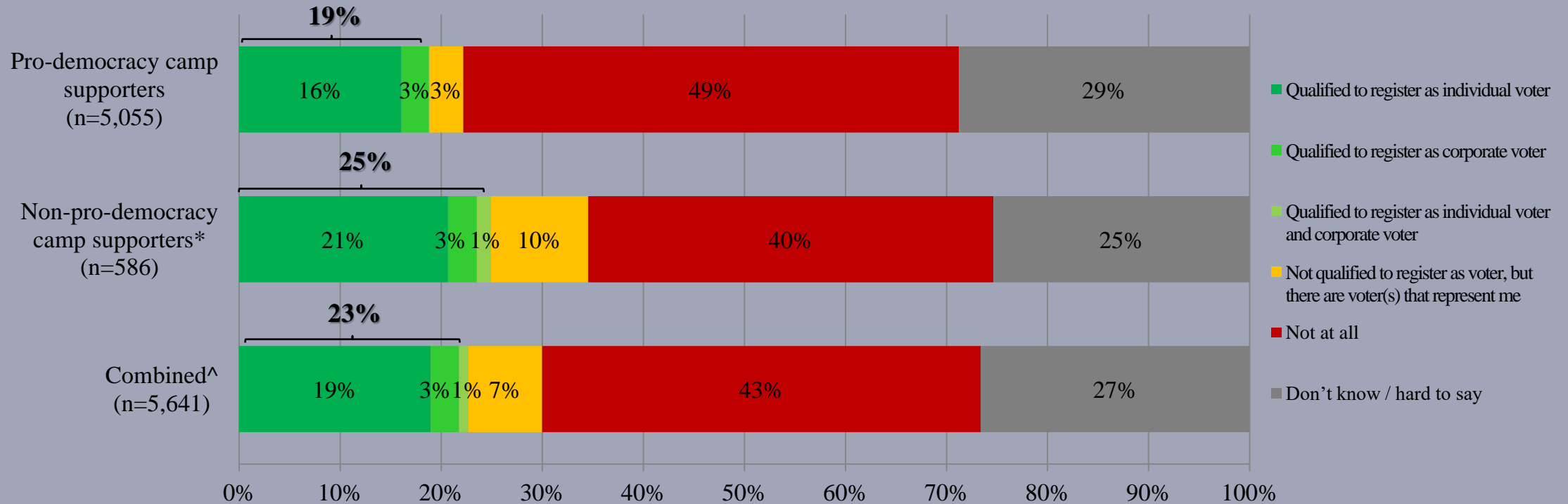
	Pro-democracy camp supporters (n=5,055)	Non-pro-democracy camp supporters* (n=586)	Combined^ (n=5,641)
Qualified to register as individual voter	16%	21%	19%
Qualified to register as corporate voter	3%	3%	3%
Qualified to register as individual voter and corporate voter	<1%	1%	1%
Not qualified to register as voter, but there are voter(s) that represent me	3%	10%	7%
Not at all	49%	40%	43%
Don't know / hard to say	29%	25%	27%

* Include: pro-establishment camp supporters, centrist supporters, no political inclination / politically neutral / do not belong to any camp

^ The aggregated figures come from adjusting the by-group weighted figures using ratio of “pan-democratic” vs “non-pan-democratic” collected in regular tracking survey.

Survey Result - “We Hongkongers” Panel Survey

- Latest survey period: 2-5/8/2021
- Question: Q3 Under the new system, will you be able to participate in the Election Committee Subsector Elections?



* Include: pro-establishment camp supporters, centrist supporters, no political inclination / politically neutral / do not belong to any camp

^ The aggregated figures come from adjusting the by-group weighted figures using ratio of “pan-democratic” vs “non-pan-democratic” collected in regular tracking survey.

Survey Result - “We Hongkongers” Panel Survey

16

Subsample Results

*** Only include those who answer “not qualified to register as voter, but there are voter(s) that represent me” in Q3 (n=184)**

Survey Result - “We Hongkongers” Panel Survey

- Latest survey period: 2-5/8/2021
- Question: Q4 Following the previous question, to what extent do you think the voter(s) of the Subsector Election can represent you?

	Pro-democracy camp supporters (n=154)	Non-pro-democracy camp supporters* (n=30)	Combined^ (n=184)
Very much can	<1%	3%	2%
Somewhat can	<1%	15%	12%
Half-half	7%	39%	33%
Somewhat can't	1%	19%	16%
Very much can't	32%	24%	26%
Don't know / hard to say	61%	0%	10%
Mean†	1.4	2.5	2.4

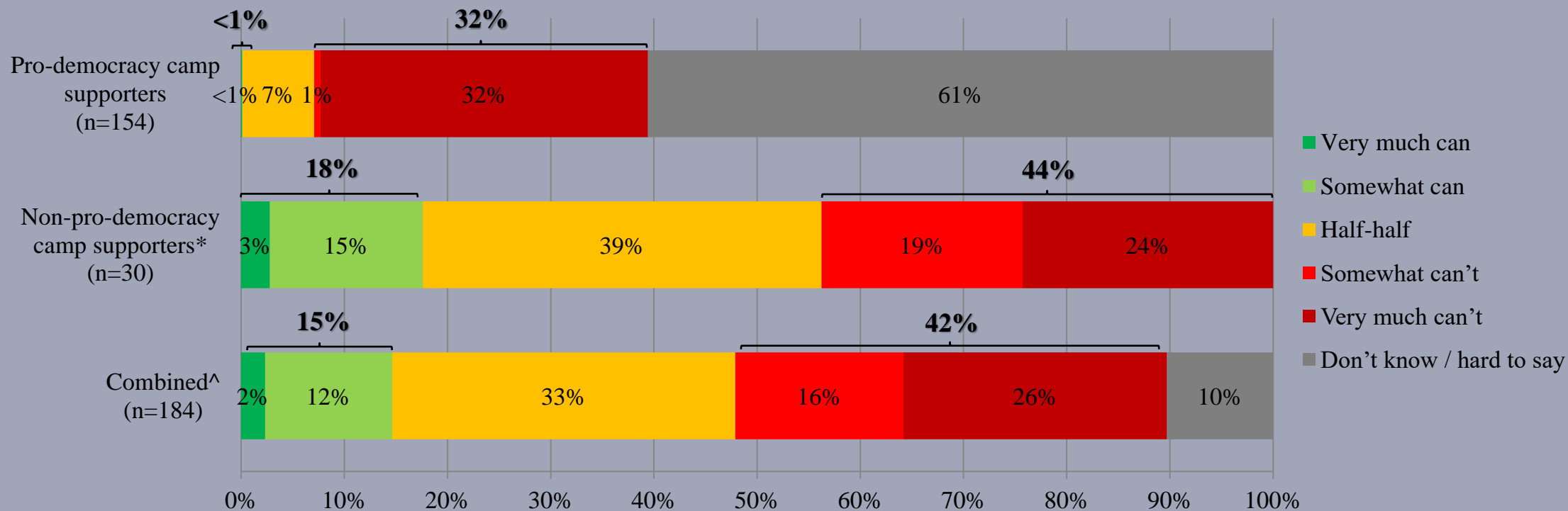
* Include: pro-establishment camp supporters, centrist supporters, no political inclination / politically neutral / do not belong to any camp

^ The aggregated figures come from adjusting the by-group weighted figures using ratio of “pan-democratic” vs “non-pan-democratic” collected in regular tracking survey.

† The mean value is calculated by quantifying all individual responses into 1, 2, 3, 4, 5 marks according to their degree of positive level, where 1 is the lowest and 5 the highest, and then calculate the sample mean.

Survey Result - “We Hongkongers” Panel Survey

- Latest survey period: 2-5/8/2021
- Question: Q4 Following the previous question, to what extent do you think the voter(s) of the Subsector Election can represent you?



* Include: pro-establishment camp supporters, centrist supporters, no political inclination / politically neutral / do not belong to any camp

^ The aggregated figures come from adjusting the by-group weighted figures using ratio of “pan-democratic” vs “non-pan-democratic” collected in regular tracking survey.

Survey Result - “We Hongkongers” Panel Survey

19

Cross-tabulation Analysis

Survey Result - “We Hongkongers” Panel Survey

20

- **Cross-tabulation Analysis[#] (n=5,632)**

		Q2 Have you ever participated in the Election Committee Subsector Elections?				
		Voted in the election	Registered as voter (but never voted)	Qualified to register as voter (but never registered)	Never qualified to register as voter	Don't know / hard to say
Q1 How familiar are you with the new system of Election Committee Subsector Elections?	Familiar	22%	4%	25%	6%	3%
	Half-half	37%	19%	25%	27%	23%
	Unfamiliar	41%	68%	50%	65%	60%
	Don't know / hard to say	<1%	9%	<1%	2%	14%

[#] The values in each column add up to 100%

Survey Result - “We Hongkongers” Panel Survey

21

- **Cross-tabulation Analysis# (n=5,640)**

		Q2 Have you ever participated in the Election Committee Subsector Elections?				
		Voted in the election	Registered as voter (but never voted)	Qualified to register as voter (but never registered)	Never qualified to register as voter	Don't know / hard to say
Q3 Under the new system, will you be able to participate in the Election Committee Subsector Elections?	Qualified to register as individual voter/ corporate voter	56%	42%	20%	5%	2%
	Not qualified to register as voter, but there are voter(s) that represent me	9%	8%	5%	8%	<1%
	Not at all	20%	33%	19%	65%	24%
	Don't know / hard to say	15%	17%	55%	22%	74%

The values in each column add up to 100%