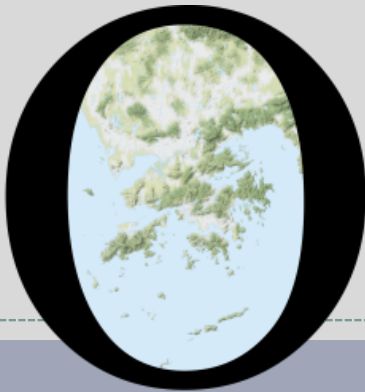


POP



HONG KONG PUBLIC OPINION PROGRAM

HONG KONG PUBLIC OPINION RESEARCH INSTITUTE

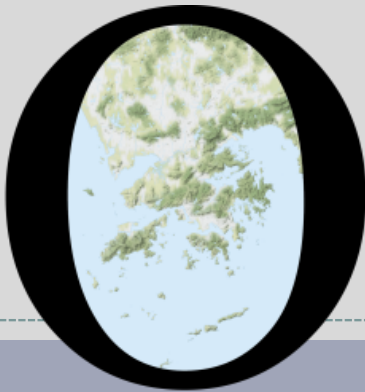
香港民意研究所 之 香港民意研究計劃

“We Hongkongers” Panel Survey

Latest Results

July 16, 2021

POP



HONG KONG PUBLIC OPINION PROGRAM

HONG KONG PUBLIC OPINION RESEARCH INSTITUTE

香港民意研究所 之 香港民意研究計劃

限聚指數

Group Gathering Prohibition Index

16/7/2021

樣本資料 - 限聚指數基準調查

Contact Information - Group Gathering Prohibition Index Benchmark Survey

3

	香港民研意見群組成員 HKPOP Panel
調查日期 Survey date	18/6 15:00 – 23/6 15:00
調查方法 Survey method	以電郵接觸群組成員，並於網上完成調查 Online survey
訪問對象 Target population	十二歲或以上的香港市民 Hong Kong residents aged 12+
總成功樣本 Total sample size	6,158
回應比率 Response rate	6.6%
抽樣誤差 Sampling error	95% 置信水平，百分比誤差 +/-1% Sampling error of percentages at +/-1% at 95% confidence level
加權方法 Weighting method	按照1) 政府統計處提供的全港人口年齡及性別分佈統計數字、各區議會人口數字； 2) 選舉事務處提供的區議會選舉結果；3) 常規調查中的特首評分分佈數字，以 「反覆多重加權法」作出調整。 The figures are rim-weighted according to 1) gender-age distribution of Hong Kong population and by District Councils population figures from Census and Statistics Department; 2) Voting results of District Councils Election from Registration and Electoral Office; 3) rating distribution of Chief Executive from regular tracking surveys.

限聚指數

Group Gathering Prohibition Index

4

- **最新調查日期 Latest survey date: 18-23/6/2021 (N=6,158)**
- **上次調查日期 Last survey date: 17-24/5/2021 (N=6,583)**
- **上上次調查日期 Second last survey date: 16-21/4/2021 (N=6,330)**

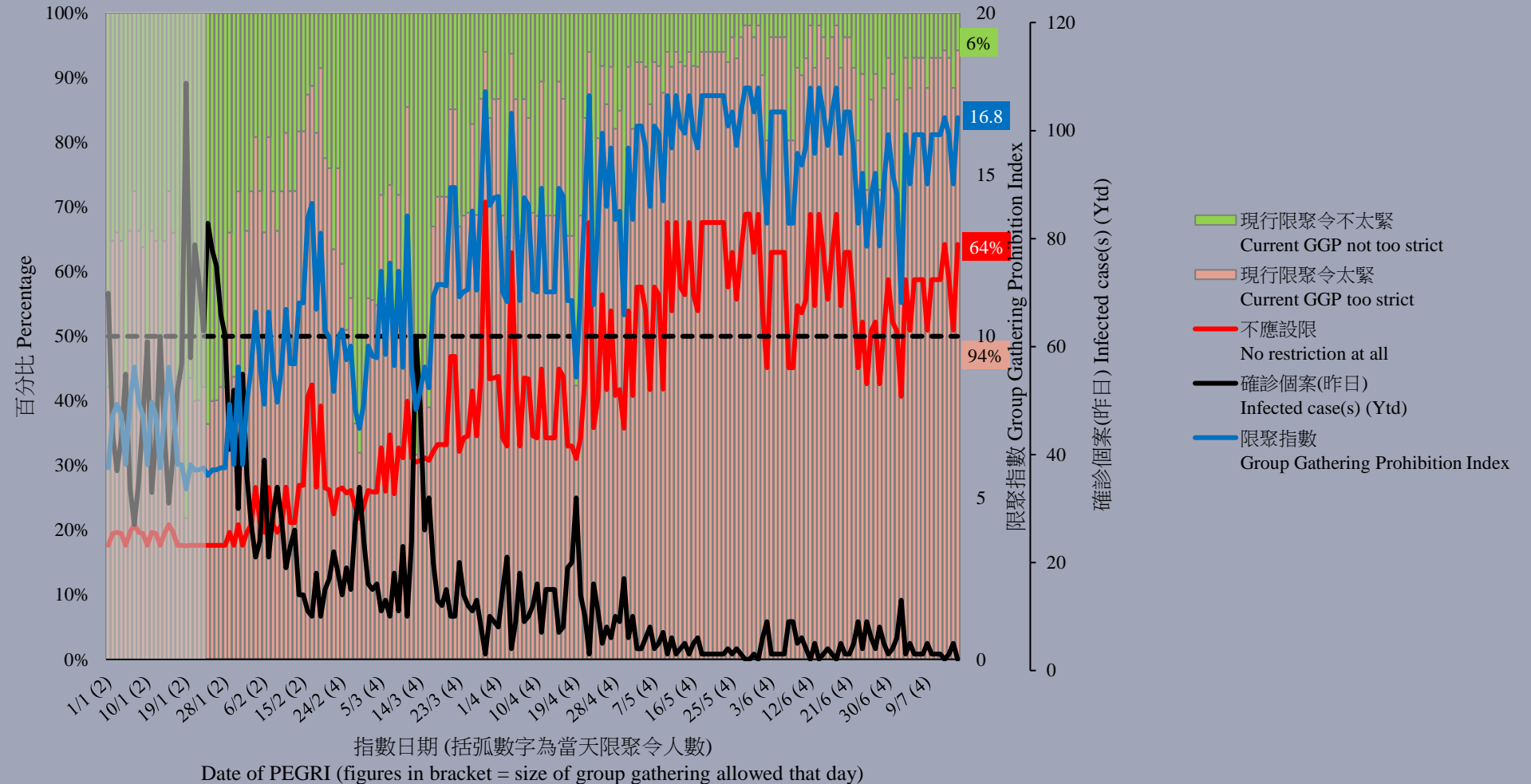
意見題目	Opinion Questions
<p>你認為香港應否無條件全面撤銷「限聚令」？</p> <ul style="list-style-type: none">▪ 應該無條件撤銷「限聚令」▪ 不應該，應視乎疫情而定▪ 不知道／很難說 <p>[追問沒有選擇應該“無條件撤銷「限聚令」”者] 你認為每天新增確診個案數應是多少，才適合將「限聚令」訂於2人？ 你認為每天新增確診個案數應是多少，才適合將「限聚令」訂於4人？ 你認為每天新增確診個案數應是多少，才適合將「限聚令」訂於8人？ 你認為每天新增確診個案數應是多少，才適合將「限聚令」訂於16人？ 你認為感染個案清零多少天後，限聚令應該全面撤銷？</p> <p>請於以下欄位列舉你認為合適的 [個案數 及 限聚人數] 組合……</p>	<p>Do you think the regulation prohibiting gatherings of more than a specific number of people in public places should be completely lifted unconditionally in Hong Kong?</p> <ul style="list-style-type: none">▪ Yes, the ban should be lifted unconditionally▪ No, it should depend on the epidemic situation▪ Don't know / hard to say <p>[For respondents NOT answering “Yes, the ban should be lifted unconditionally”] How many newly confirmed cases each day should there be before it would be appropriate to prohibit gatherings of more than 2 people? How many newly confirmed cases each day should there be before it would be appropriate to prohibit gatherings of more than 4 people? How many newly confirmed cases each day should there be before it would be appropriate to prohibit gatherings of more than 8 people? How many newly confirmed cases each day should there be before it would be appropriate to prohibit gatherings of more than 16 people? After how many days of zero infection do you think the group gathering ban should be lifted altogether?</p> <p>Please list combinations of [number of cases & number of people allowed in gatherings] that you think is appropriate in the field below:</p>

調查結果 - 限聚接受程度

Survey Result – Group Gathering Prohibition Acceptance Level

5

限聚接受程度 Group Gathering Prohibition Acceptance Level



Date of PEGRI (figures in bracket = size of group gathering allowed that day)

限聚指數 - 分析評論

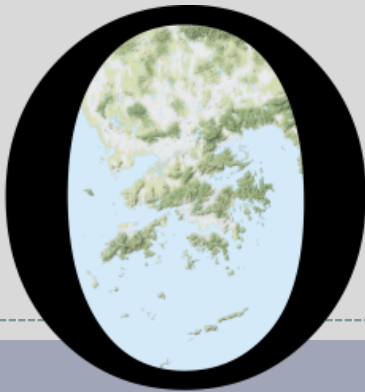
Group Gathering Prohibition Index – Commentary

6

民生大聯盟發言人章彤輝博士指出，「與一個月前相比，近日新聞中關於本地新冠肺炎的報導少了很多。相對地，『疫苗』和『通關』安排則不時被提及。特首亦提及與內地免隔離通關的兩個條件，包括疫苗接種率達70%，以及需維持『外防輸入』的防控策略，巧妙地把疫苗與通關扣上了循環因果關係。但是，對旅遊業來說，70%更像是目前的失業比例。政府官員看到的是數字，但業界看到的是末日。」

Dr Tung-fai Cheung, Spokesman of Alliance of Revitalizing Economy and Livelihood, observed, “There is less news about local COVID-19 compared with one month ago. On the other hand, ‘vaccination’ and ‘border crossing (to mainland)’ have been mentioned much more. Our Chief Executive said there are 2 prerequisites for crossing border quarantine waiver: 1) over 70% of vaccine coverage, and 2) maintain the strategy of ‘preventing the importation of cases’, thereby skilfully placing vaccination and border crossing in a causal relationship. However, to the tourism industry, 70% looks more like the current unemployment rate. The government officials see the figures, but the industry sees the doom.”

POP



HONG KONG PUBLIC OPINION PROGRAM

HONG KONG PUBLIC OPINION RESEARCH INSTITUTE

香港民意研究所 之 香港民意研究計劃

“We Hongkongers” Panel Survey

Latest Results

July 16, 2021

Contact Information - “We Hongkongers” Panel Survey

8

	HKPOP Panel
Date of survey	July 9, 3pm – July 14, 3pm
Survey method	Online survey
Target population	Hong Kong residents aged 12+
Total sample size	7,690
Response rate	8.4%
Sampling error	Sampling error of percentages at +/-1% at 95% confidence level
Weighting method	The figures are rim-weighted according to 1) gender-age distribution, educational attainment (highest level attended) distribution, economic activity status distribution of Hong Kong population and by District Councils population figures from Census and Statistics Department; 2) Voting results of District Councils Election from Registration and Electoral Office; 3) rating distribution of Chief Executive from regular tracking surveys.

Survey Result - “We Hongkongers” Panel Survey

9

- Latest survey period: 9-14/7/2021
- Question: Q1 In the evening on July 1, a man killed himself after attacking a policeman. How professional do you think the Police Force is handling this case?

	Pro-democracy camp supporters (n=6,499)	Non-pro-democracy camp supporters* (n=778)	Combined^ (n=7,277)
Very professional	1%	40%	25%
Somewhat professional	5%	23%	16%
	6%	63%	41%
Half-half	12%	9%	10%
Somewhat unprofessional	14%	5%	8%
Very unprofessional	56%	15%	31%
	70%	20%	39%
Don't know / hard to say	13%	7%	9%
Mean†	1.6	3.7	3.0

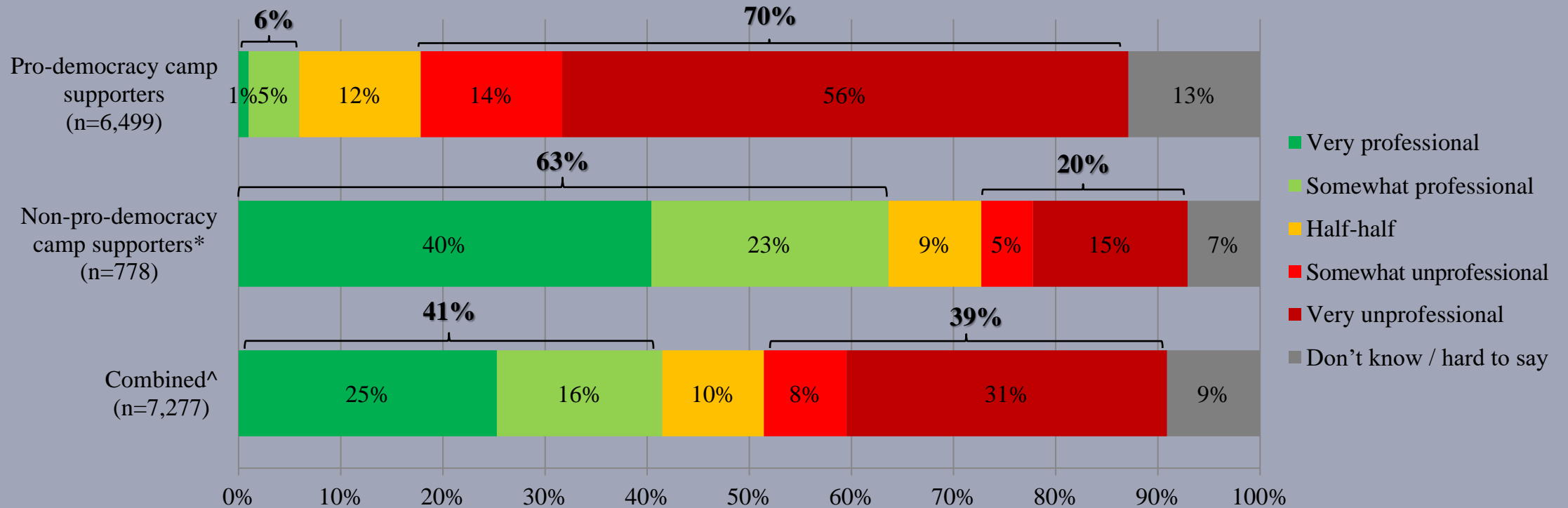
* Include: pro-establishment camp supporters, centrist supporters, no political inclination / politically neutral / do not belong to any camp

^ The aggregated figures come from adjusting the by-group weighted figures using ratio of “pan-democratic” vs “non-pan-democratic” collected in regular tracking survey.

† The mean value is calculated by quantifying all individual responses into 1, 2, 3, 4, 5 marks according to their degree of positive level, where 1 is the lowest and 5 the highest, and then calculate the sample mean.

Survey Result - “We Hongkongers” Panel Survey

- Latest survey period: 9-14/7/2021
- Question: Q1 In the evening on July 1, a man killed himself after attacking a policeman. How professional do you think the Police Force is handling this case?



* Include: pro-establishment camp supporters, centrist supporters, no political inclination / politically neutral / do not belong to any camp

^ The aggregated figures come from adjusting the by-group weighted figures using ratio of “pan-democratic” vs “non-pan-democratic” collected in regular tracking survey.

Survey Result - “We Hongkongers” Panel Survey

11

- Latest survey period: 9-14/7/2021
- Question: Q2 Do you think the relationship between the police and the community will become better, worse, or remain unchanged in a year from now?

	Pro-democracy camp supporters (n=6,503)	Non-pro-democracy camp supporters* (n=779)	Combined^ (n=7,282)
Better	4%	39%	25%
Remains unchanged / more or less the same	35%	24%	28%
Worse	58%	26%	38%
Don't know / hard to say	3%	11%	8%

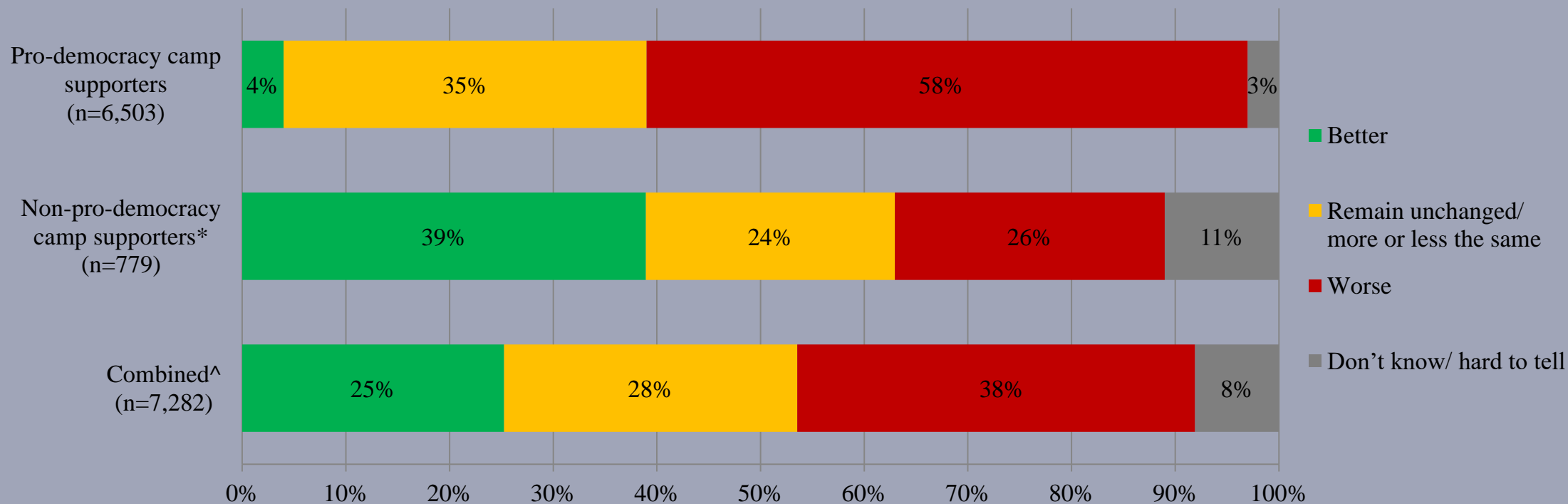
* Include: pro-establishment camp supporters, centrist supporters, no political inclination / politically neutral / do not belong to any camp

^ The aggregated figures come from adjusting the by-group weighted figures using ratio of “pan-democratic” vs “non-pan-democratic” collected in regular tracking survey.

Survey Result - “We Hongkongers” Panel Survey

12

- Latest survey period: 9-14/7/2021
- Question: Q2 Do you think the relationship between the police and the community will become better, worse, or remain unchanged in a year from now?



* Include: pro-establishment camp supporters, centrist supporters, no political inclination / politically neutral / do not belong to any camp

^ The aggregated figures come from adjusting the by-group weighted figures using ratio of “pan-democratic” vs “non-pan-democratic” collected in regular tracking survey.

Survey Result - “We Hongkongers” Panel Survey

- In-depth analysis[#] (n=6,788)

		Q1 In the evening on July 1, a man killed himself after attacking a policeman. How professional do you think the Police Force is handling this case?		
		Professional	Half-half	Unprofessional
Q2 Do you think the relationship between the police and the community will become better, worse, or remain unchanged in a year from now?	Better	66%	5%	3%
	Remains unchanged / more or less the same	27%	57%	27%
	Worse	7%	39%	70%

[#] The values in each column add up to 100%