

POP



HONG KONG PUBLIC OPINION PROGRAM

HONG KONG PUBLIC OPINION RESEARCH INSTITUTE

香港民意研究所 之 香港民意研究計劃

Community Democracy Project -

Community Health Module

Press Release

July 24, 2020

Contact Information - Community Health Module

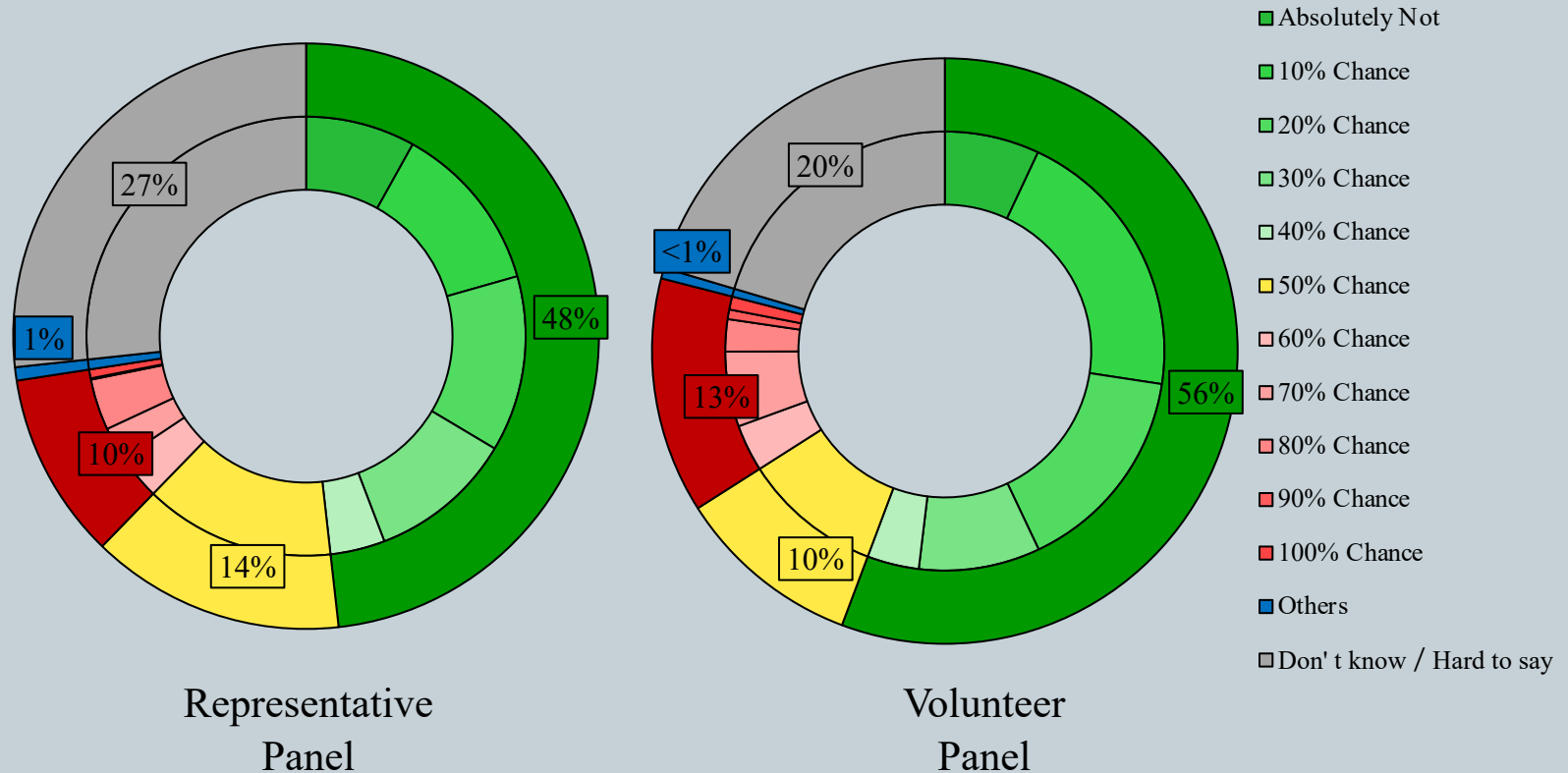
2

	HKPOP Panel	
Date of survey	July 16, 3pm – July 23, 3pm	
Survey method	Online survey	
Target population	Hong Kong residents aged 12+	
	Representative Panel	Volunteer Panel
Total sample size	854	8,739
Response rate	10.9%	13.0%
Sampling error	Sampling error of percentages at +/-3% at 95% confidence level	Sampling error of percentages at +/-1% at 95% confidence level
Weighting method	The figures are rim-weighted according to 1) gender-age distribution of Hong Kong population and by District Councils population figures from Census and Statistics Department; 2) Voting results of District Councils Election from Registration and Electoral Office; 3) rating distribution of Chief Executive from regular tracking surveys.	

Survey Result - Community Health Module

3

- Latest Survey of date: 16-23/7/2020
- Question: How likely do you think you will be infected with the Novel Coronavirus (COVID-19) in the next month, also known as “Wuhan pneumonia”?

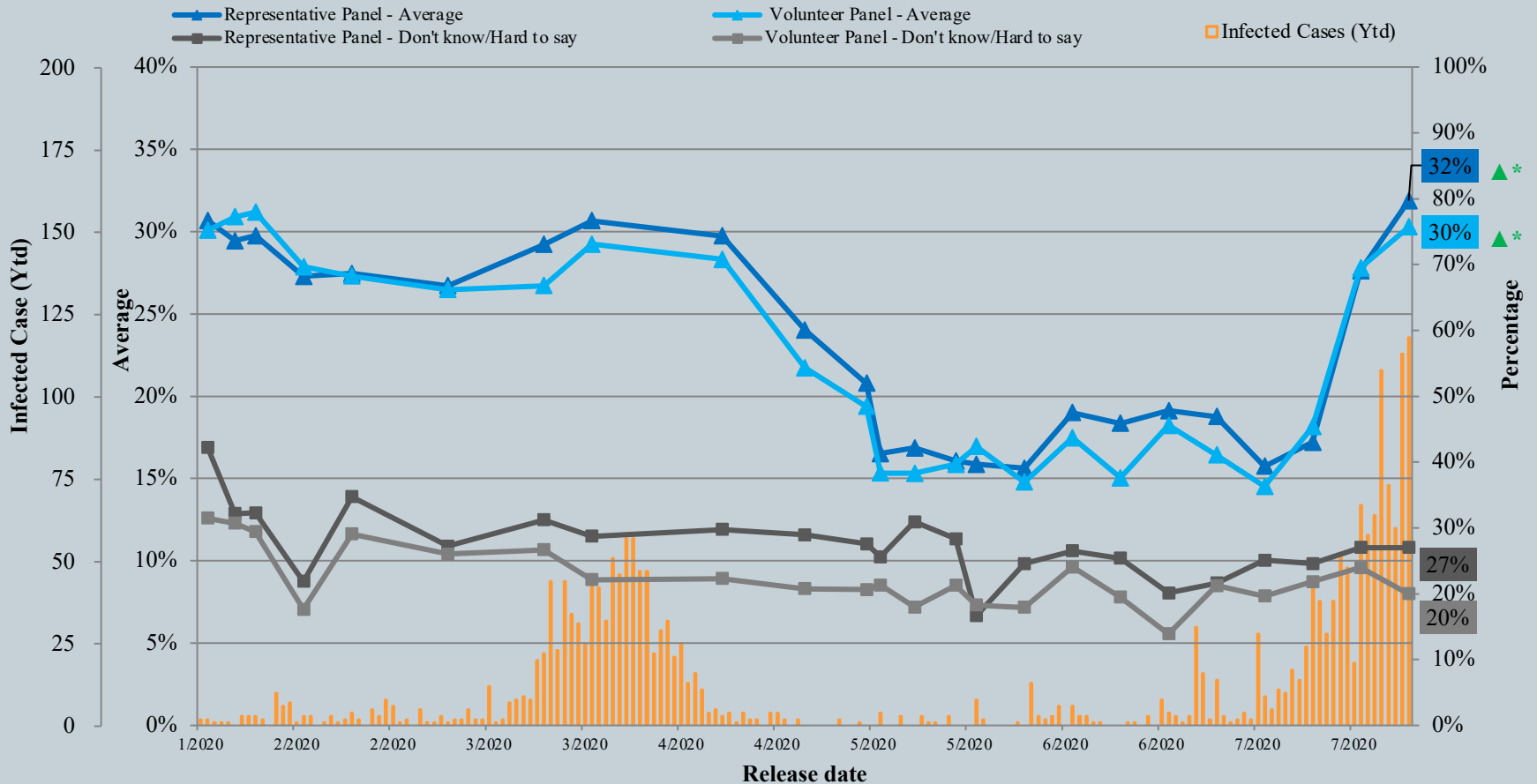


^ The answer options are 0-10 scale and “others/don't know/hard to say”.

Survey Result - Community Health Module

4

Assessment of the public's expected chance of COVID-19 infection



^ The answer options are 0-10 scale and "others/don't know/hard to say".

* Significant change

Survey Result - Community Health Module

7

- Latest Date of survey: 16-23/7/2020
- Last Date of survey: 9-16/7/2020 (*Representative Panel N=870 Volunteer Panel N=8,950*)

Opinion Question [^]		Hong Kong People Representative Panel (N=854)				Hong Kong People Volunteer Panel (N=8,732)			
		Satisfied	Half-half	Dissatisfied	Mean [†]	Satisfied	Half-half	Dissatisfied	Mean [†]
Q2 How satisfied or dissatisfied are you with the government's performance in handling novel coronavirus pneumonia?	Latest	22%	19%	59%	2.2	22%	12% ▼*	66% ▲*	2.0 ▼*
	Last	24%	18%	58%	2.3	22%	15%	63%	2.2

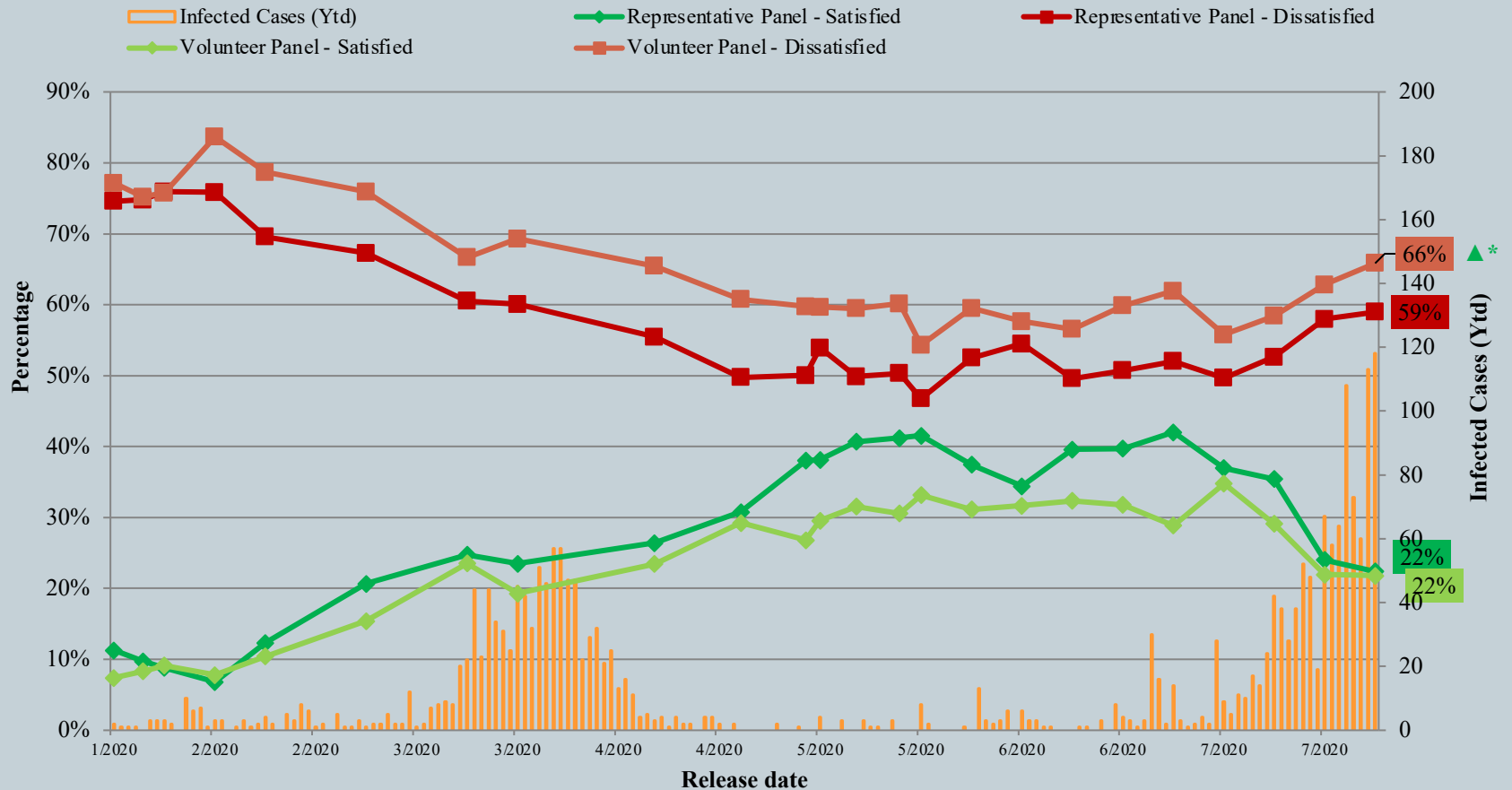
[^] Answer options included: very much satisfied, somewhat satisfied, half-half, somewhat dissatisfied, very much dissatisfied and don't know / hard to say

[†] The mean value is calculated by quantifying all individual responses into 1, 2, 3, 4, 5 marks according to their degree of positive level, where 1 is the lowest and 5 the highest, and then calculate the sample mean.

* Significant change

Survey Result - Community Health Module

Appraisal of HK Government's performance in handling novel coronavirus pneumonia



^ Answer options included: very much satisfied, somewhat satisfied, half-half, somewhat dissatisfied, very much dissatisfied and don't know / hard to say.

* Significant change

Contact Information - PENRI

11

	HKPOP Panel
Date of survey	July 13, 3pm – July 23, 3pm
Survey method	Online survey
Target population	Hong Kong residents aged 12+
Total sample size	9,625
Response rate	12.8%
Sampling error	Sampling error of percentages at +/-1% at 95% confidence level
Weighting method	The figures are rim-weighted according to 1) gender-age distribution of Hong Kong population and by District Councils population figures from Census and Statistics Department; 2) Voting results of District Councils Election from Registration and Electoral Office; 3) rating distribution of Chief Executive from regular tracking surveys.

Survey Result - PENRI

12

Date of Publishing	8/7	9/7	10/7	11/7	12/7	13/7	14/7	15/7	16/7	17/7	18/7	19/7	20/7	21/7	22/7	23/7	24/7
Imported cases(Ytd)	5	5	8	6	12	8	11	8	5	4	8	4	25	7	3	11	7
Local infected cases(Ytd)	9	19	34	32	16	30	41	40	14	63	50	60	83	66	58	102	111
Post-Epidemic Work Resumption Index (PEWRI)	-	-	-	-	-	-	-	-	-	-	-	-	-	-	1.7	2.2	2.2
Post-Epidemic Public-Facilities Re-open Index (PEPRI)	-	-	-	-	-	-	-	-	-	-	-	-	-	-	3.7	3.6	3.5
Post-Epidemic Gathering Resumption Index (PEGRI)	26.4	25.6	26.6	26.6	26.4	26.2	25.2	12.0	11.5	11.5	10.5	10.4	10.2	10.1	8.8	9.2	9.1
Post-Epidemic Business Resumption Index PEBRI(catering)	-	-	-	-	-	-	-	-	-	-	-	-	-	-	4.4	4.8	4.8

Survey Result - PENRI

14

