

POP



HONG KONG PUBLIC OPINION PROGRAM

HONG KONG PUBLIC OPINION RESEARCH INSTITUTE

香港民意研究所 之 香港民意研究計劃

Community Democracy Project -

Community Health Module

Press Release

June 5, 2020

Contact Information

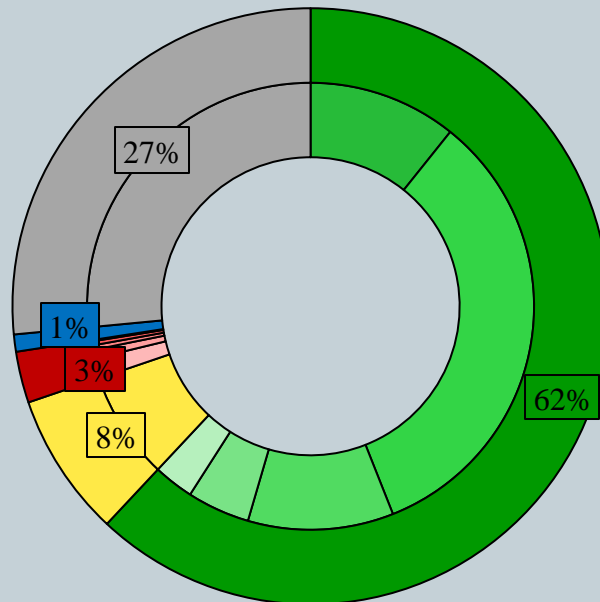
2

	HKPOP Panel	
Date of survey	May 28, 3pm – June 4, 3pm	
Survey method	Online survey	
Target population	Hong Kong residents aged 12+	
	Representative Panel	Volunteer Panel
Total sample size	916	9,427
Response rate	11.7%	14.1%
Sampling error	Sampling error of percentages at +/-3% at 95% confidence level	Sampling error of percentages at +/-1% at 95% confidence level
Weighting method	The figures are rim-weighted according to 1) gender-age distribution of Hong Kong population and by District Councils population figures from Census and Statistics Department; 2) Voting results of District Councils Election from Registration and Electoral Office; 3) rating distribution of Chief Executive from regular tracking surveys.	

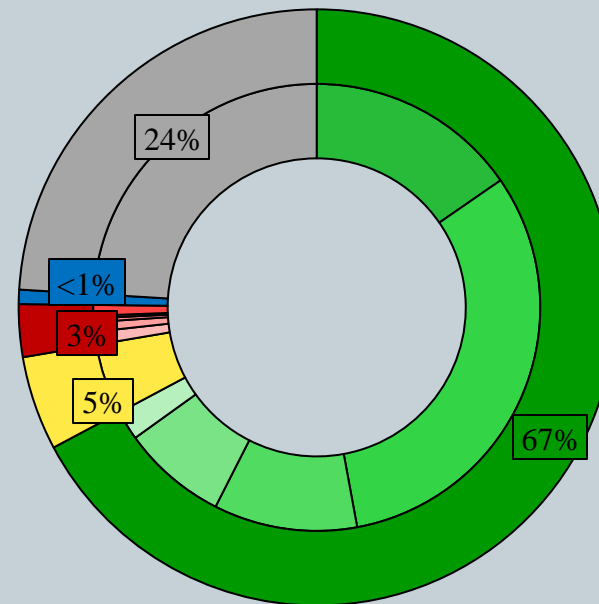
Survey Result - Community Health Module

3

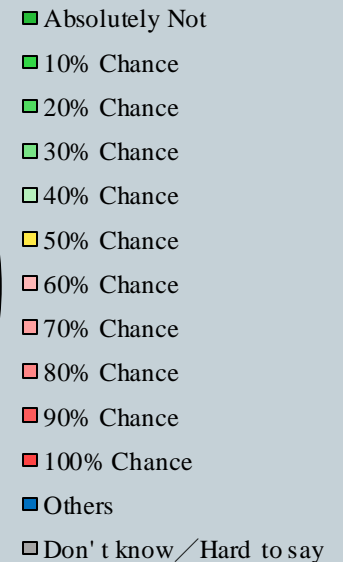
- Latest Date of survey: 28/5-4/6/2020
- Question: How likely do you think you will be infected with the Novel Coronavirus (COVID-19) in the next month, also known as “Wuhan pneumonia”?



Representative
Panel



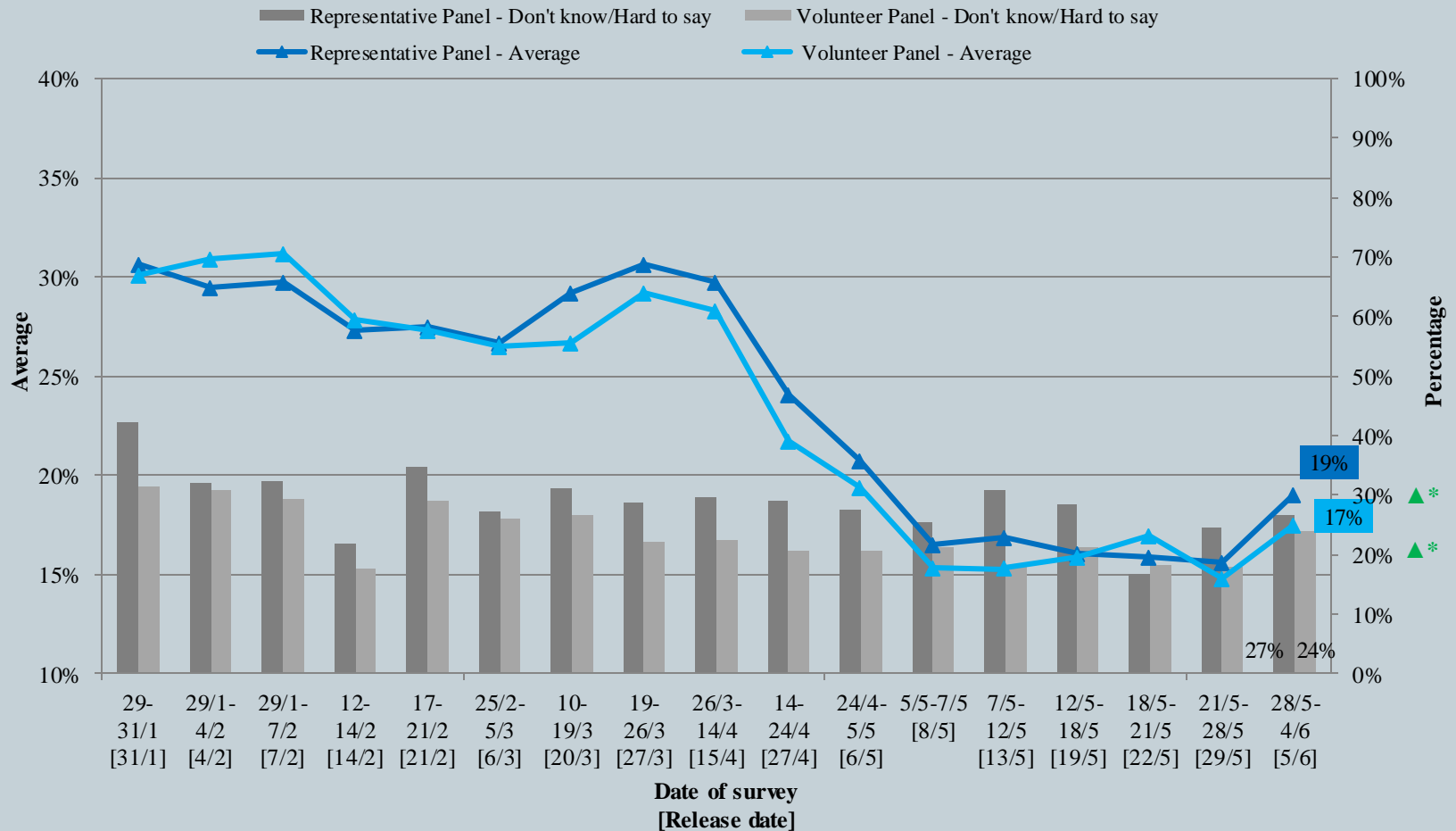
Volunteer
Panel



Survey Result - Community Health Module

4

Assessment of the public's expected chance of COVID-19 infection



^ The answer options are 0-10 scale and "others/don't know/hard to say".

* Significant change

Survey Result - Community Health Module

5

- Latest Date of survey: 28/5-4/6/2020
- Last Date of survey: 21-28/5/2020 (*Representative Panel N=1,000 Volunteer Panel N=10,191*)

Opinion Question [^]		Hong Kong People Representative Panel (N=916)				Hong Kong People Volunteer Panel (N=9,426)			
		Satisfied	Half-half	Dissatisfied	Mean [†]	Satisfied	Half-half	Dissatisfied	Mean [†]
Q2 How satisfied or dissatisfied are you with the government's performance in handling novel coronavirus pneumonia?	Latest	37%	10%	52%	2.5	31%	9%	60%	2.4
	Last	34%	11%	54%	2.5	32%	10% ▲*	58% ▼*	2.4

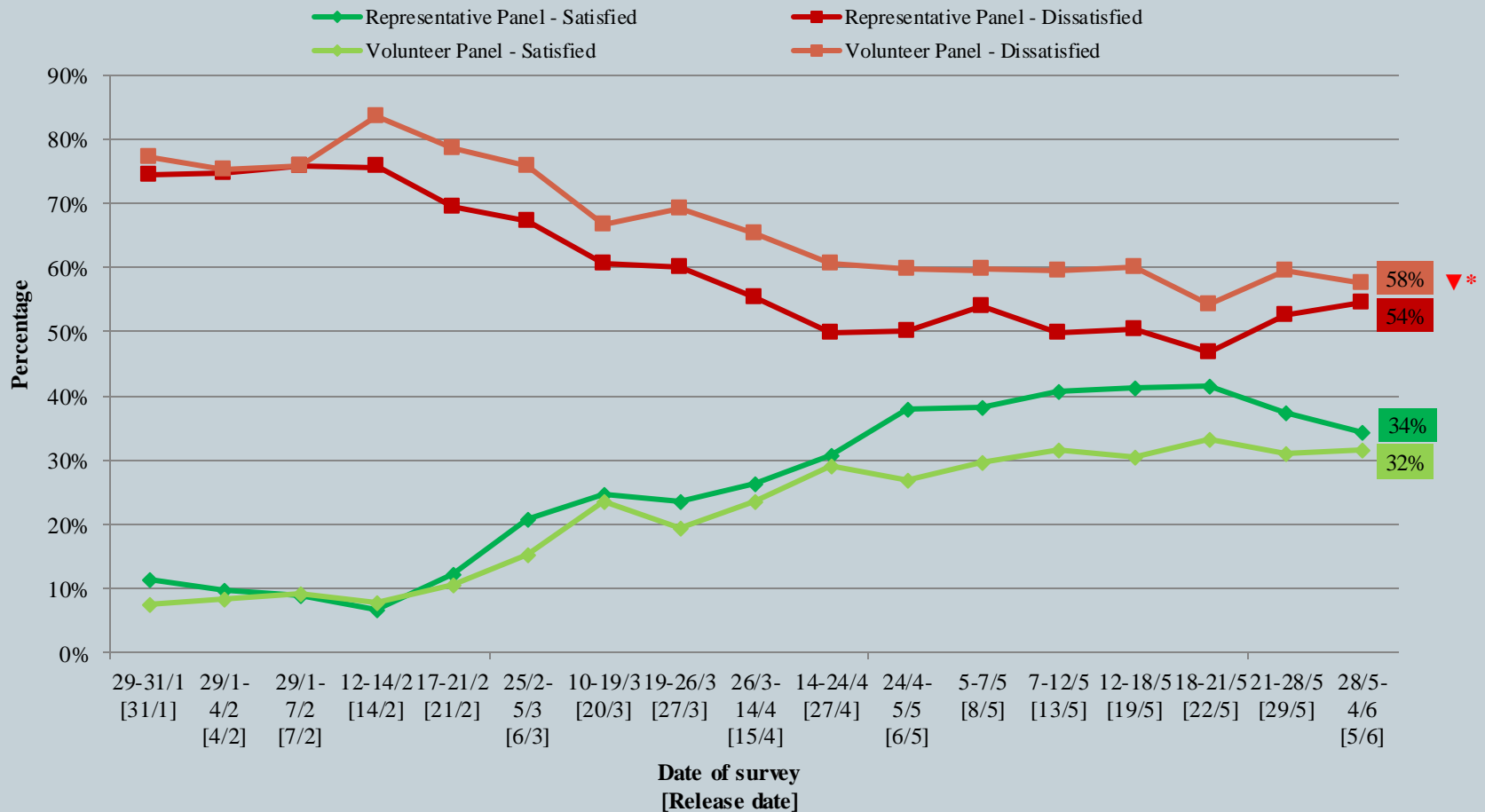
[^] Answer options included: very much satisfied, somewhat satisfied, half-half, somewhat dissatisfied, very much dissatisfied and don't know / hard to say.

* **Significant change**

Survey Result - Community Health Module

6

Appraisal of HK Government's performance in handling novel coronavirus pneumonia



^ Answer options included: very much satisfied, somewhat satisfied, half-half, somewhat dissatisfied, very much dissatisfied and don't know / hard to say.

* Significant change

Survey Result - PENRI

7

Date of Publishing	20/5	21/5	22/5	23/5	24/5	25/5	26/5	27/5	28/5	29/5	30/5	31/5	1/6	2/6	3/6	4/6	5/6
Imported cases(Ytd)	0	0	8	2	0	0	0	0	1	0	13	3	0	0	2	0	5
Local infected cases(Ytd)	0	0	0	0	0	0	0	0	0	0	0	0	2	3	4	0	1
Post-Epidemic Work Resumption Index (PEWRI)	50.6	51.2	44.6	44.2	48.9	49.1	50.1	56.2	44.6	69.8	50.3	-	-	-	-	-	-
Post-Epidemic Gathering Resumption Index (PEGRI)	59.3	60.2	48.6	49.4	60.1	59.9	59.3	61.1	50.8	76.6	57.4	64.7	27.3	27.0	27.2	56.7	27.2

Survey Result - PENRI

8

