

POP



HONG KONG PUBLIC OPINION PROGRAM

HONG KONG PUBLIC OPINION RESEARCH INSTITUTE

香港民意研究所 之 香港民意研究計劃

Community Democracy Project -

Community Health Module

Press Release

May 29, 2020

Contact Information

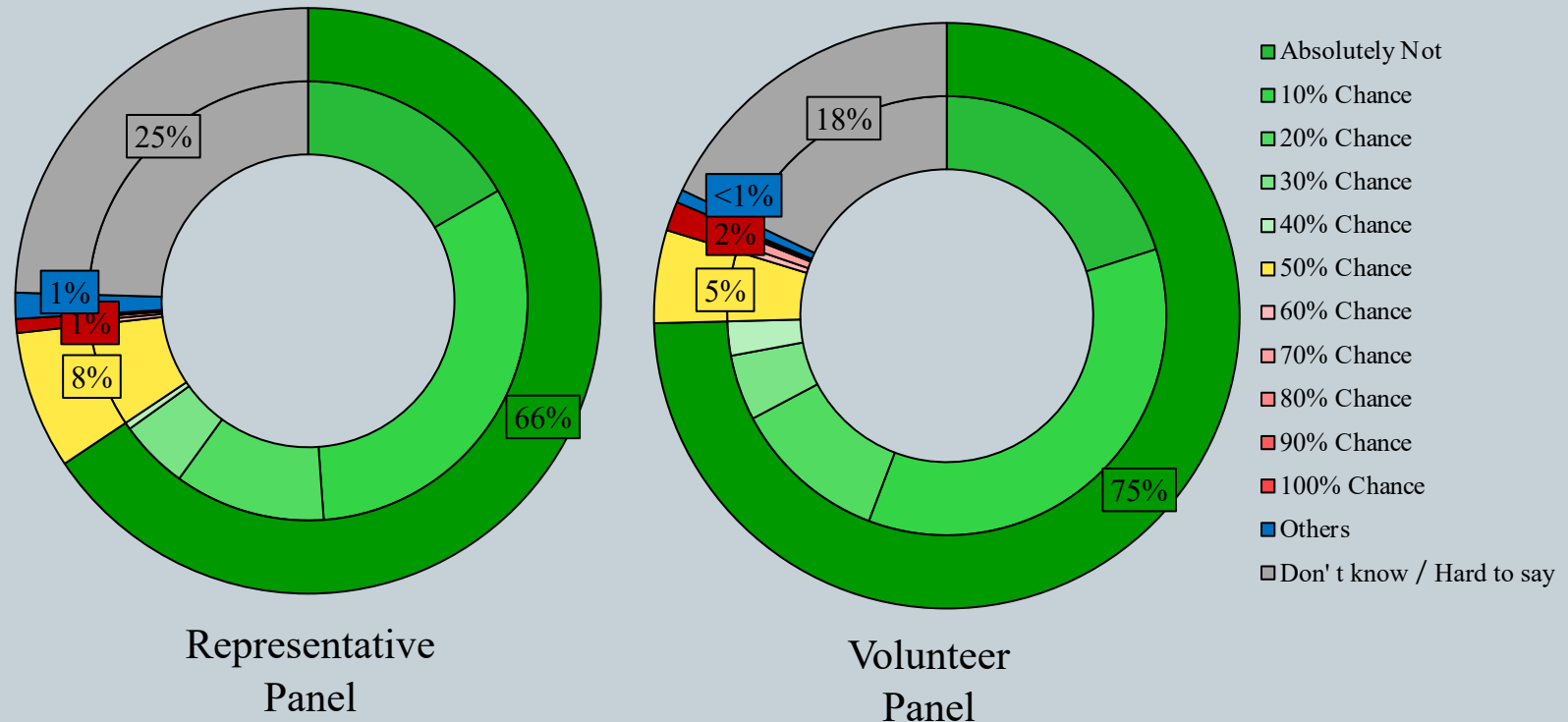
2

	HKPOP Panel	
Date of survey	May 21, 3pm – May 28, 3pm	
Survey method	Online survey	
Target population	Hong Kong residents aged 12+	
	Representative Panel	Volunteer Panel
Total sample size	1001	10,199
Response rate	12.7%	15.3%
Sampling error	Sampling error of percentages at +/-3% at 95% confidence level	Sampling error of percentages at +/-1% at 95% confidence level
Weighting method	The figures are rim-weighted according to 1) gender-age distribution of Hong Kong population and by District Councils population figures from Census and Statistics Department; 2) Voting results of District Councils Election from Registration and Electoral Office; 3) rating distribution of Chief Executive from regular tracking surveys.	

Survey Result - Community Health Module

3

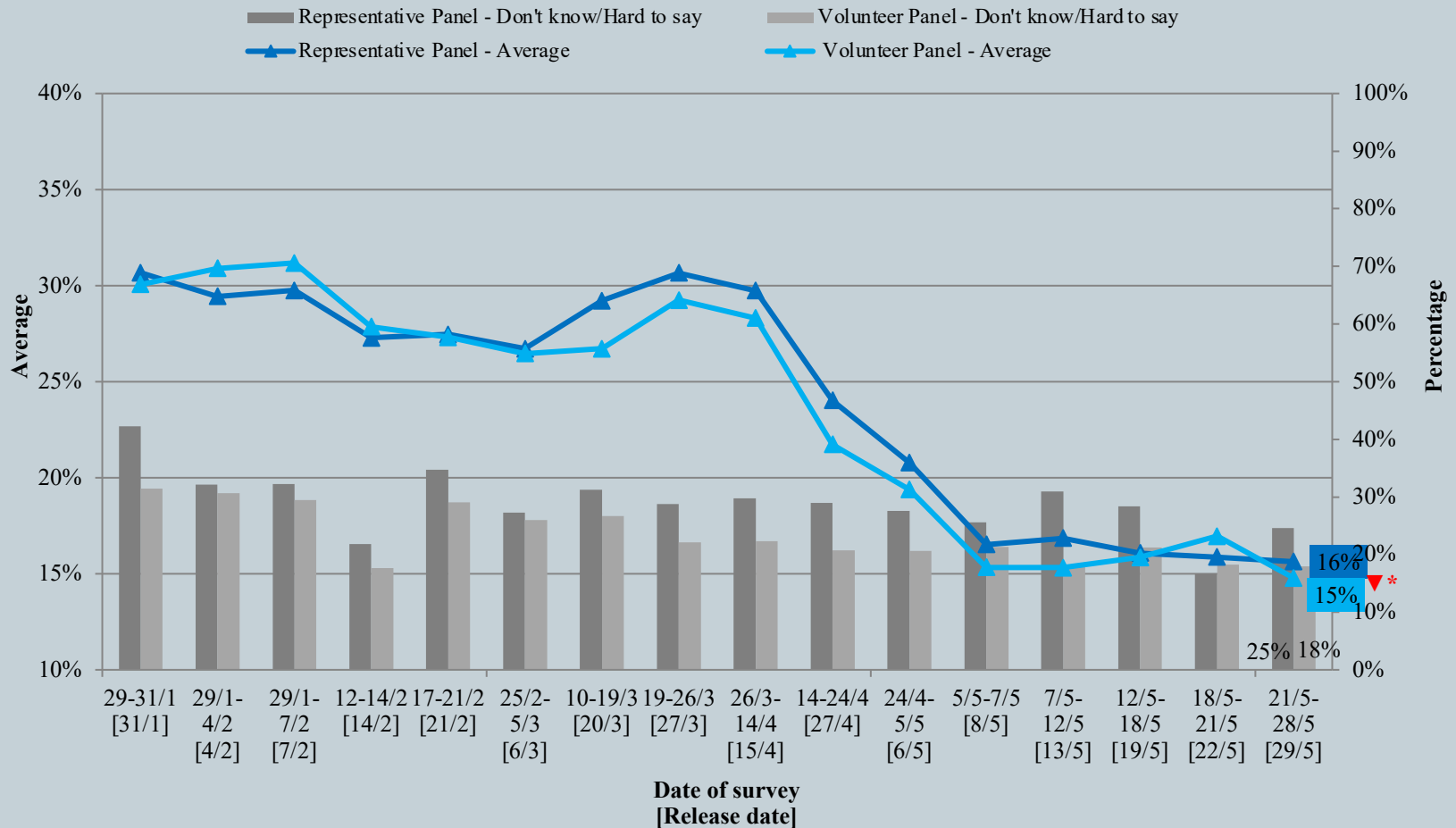
- Latest Survey of date: 21-28/5/2020
- Question: How likely do you think you will be infected with the Novel Coronavirus (COVID-19) in the next month, also known as “Wuhan pneumonia”?



Survey Result - Community Health Module

4

Assessment of the public's expected chance of COVID-19 infection



^ The answer options are 0-10 scale and "others/don't know/hard to say".

* Significant change

Survey Result - Community Health Module

5

- Latest Date of survey: 21-28/5/2020
- Last Date of survey: 18-21/5/2020 (*Representative Panel N=640 Volunteer Panel N=6,541*)

Opinion Question [^]		Hong Kong People Representative Panel (N=1,000)				Hong Kong People Volunteer Panel (N=10,191)			
		Satisfied	Half-half	Dissatisfied	Mean [†]	Satisfied	Half-half	Dissatisfied	Mean [†]
Q2 How satisfied or dissatisfied are you with the government's performance in handling novel coronavirus pneumonia?	Latest	42%	12%	47%	2.7	33%	13%	54%	2.5
	Last	37%	10%	52% ▲ *	2.5	31% ▼ *	9% ▼ *	60% ▲ *	2.4 ▼ *

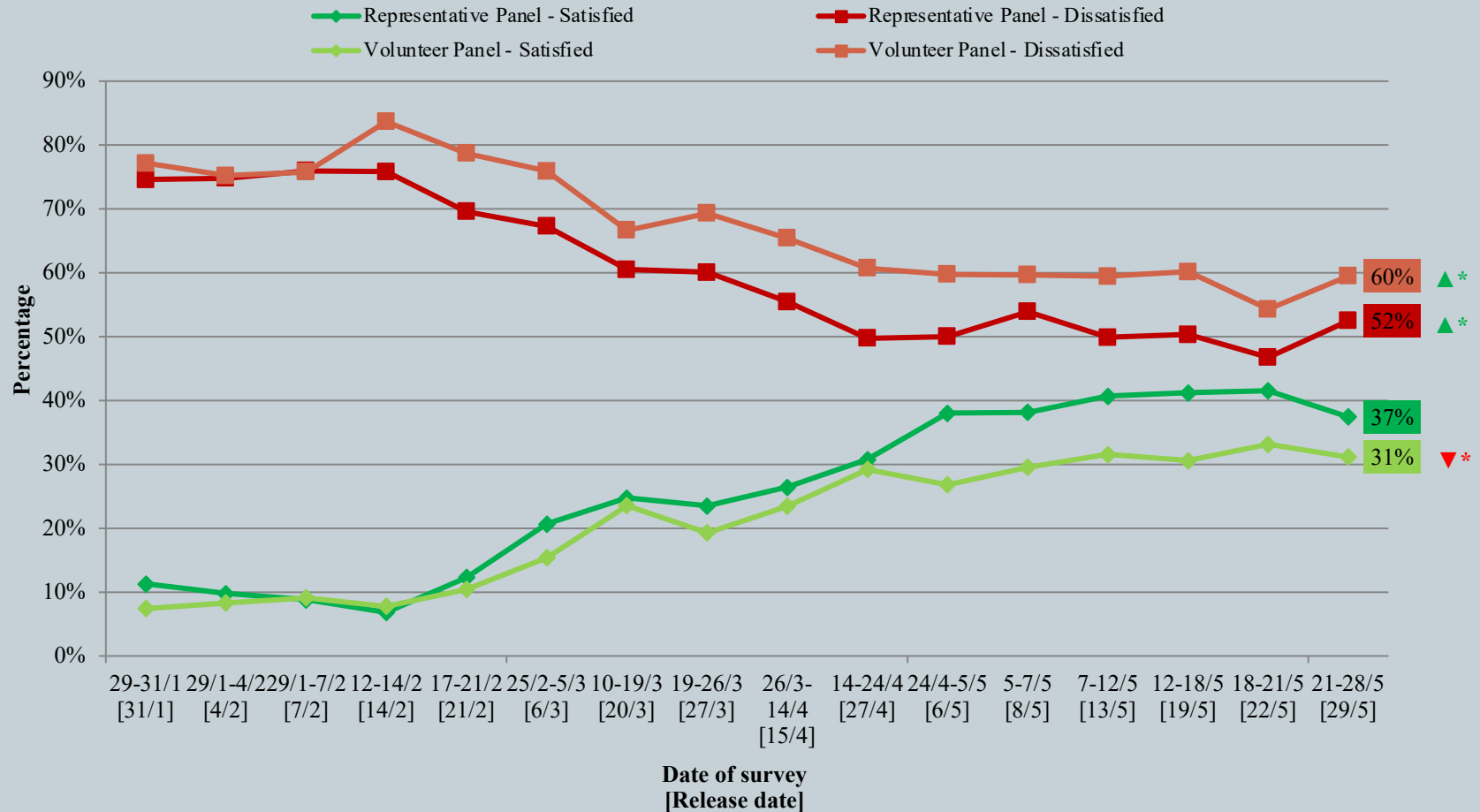
[^] Answer options included: very much satisfied, somewhat satisfied, half-half, somewhat dissatisfied, very much dissatisfied and don't know / hard to say.

*** Significant change**

Survey Result - Community Health Module

6

Appraisal of HK Government's performance in handling novel coronavirus pneumonia



^ Answer options included: very much satisfied, somewhat satisfied, half-half, somewhat dissatisfied, very much dissatisfied and don't know / hard to say.

* Significant change

Survey Result - PENRI

7

Date of Publishing	13/5	14/5	15/5	16/5	17/5	18/5	19/5	20/5	21/5	22/5	23/5	24/5	25/5	26/5	27/5	28/5	29/5
Imported cases(Ytd)	0	1	0	1	0	3	0	0	0	8	2	0	0	0	0	1	0
Local infected cases(Ytd)	0	2	1	0	0	0	0	0	0	0	0	0	0	0	0	0	0
Post-Epidemic Work Resumption Index (PEWRI)	57.1	14.6	16.0	41.0	49.3	41.5	51.4	50.6	51.2	44.6	44.2	48.9	49.1	50.1	56.2	44.6	69.8
Post-Epidemic Gathering Resumption Index (PEGRI)	71.2	23.7	25.0	45.8	57.3	45.8	59.0	59.3	60.2	48.6	49.4	60.1	59.9	59.3	60.6	49.6	76.6

Survey Result - PENRI

8

