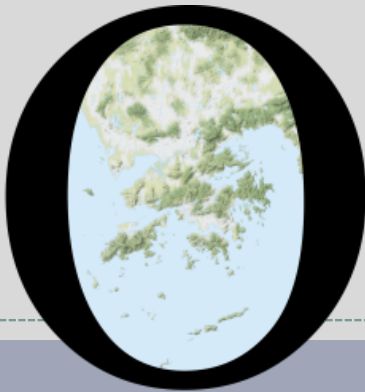


# POP



---

HONG KONG PUBLIC OPINION PROGRAM

HONG KONG PUBLIC OPINION RESEARCH INSTITUTE

香港民意研究所 之 香港民意研究計劃

---

**“We Hongkongers” Panel Survey**

**Latest Results**

**June 18, 2021**

# POP



---

HONG KONG PUBLIC OPINION PROGRAM

HONG KONG PUBLIC OPINION RESEARCH INSTITUTE

香港民意研究所 之 香港民意研究計劃

---

**限聚指數**

**Group Gathering Prohibition Index**

**18/6/2021**

# 樣本資料 - 限聚指數基準調查

## Contact Information - Group Gathering Prohibition Index Benchmark Survey

3

	香港民研意見群組成員 HKPOP Panel
調查日期 Survey date	17/5 15:00 – 24/5 15:00
調查方法 Survey method	以電郵接觸群組成員，並於網上完成調查 Online survey
訪問對象 Target population	十二歲或以上的香港市民 Hong Kong residents aged 12+
總成功樣本 Total sample size	6,583
回應比率 Response rate	7.0%
抽樣誤差 Sampling error	95% 置信水平，百分比誤差 +/-1% Sampling error of percentages at +/-1% at 95% confidence level
加權方法 Weighting method	按照1) 政府統計處提供的全港人口年齡及性別分佈統計數字、各區議會人口數字； 2) 選舉事務處提供的區議會選舉結果；3) 常規調查中的特首評分分佈數字，以 「反覆多重加權法」作出調整。 The figures are rim-weighted according to 1) gender-age distribution of Hong Kong population and by District Councils population figures from Census and Statistics Department; 2) Voting results of District Councils Election from Registration and Electoral Office; 3) rating distribution of Chief Executive from regular tracking surveys.

# 限聚指數

## Group Gathering Prohibition Index

4

- **最新調查日期 Latest survey date: 17-24/5/2021 (N=6,583)**
- **上次調查日期 Last survey date: 16-21/4/2021 (N=6,330)**
- **上上次調查日期 Second last survey date: 22-29/3/2021 (N=6,806)**

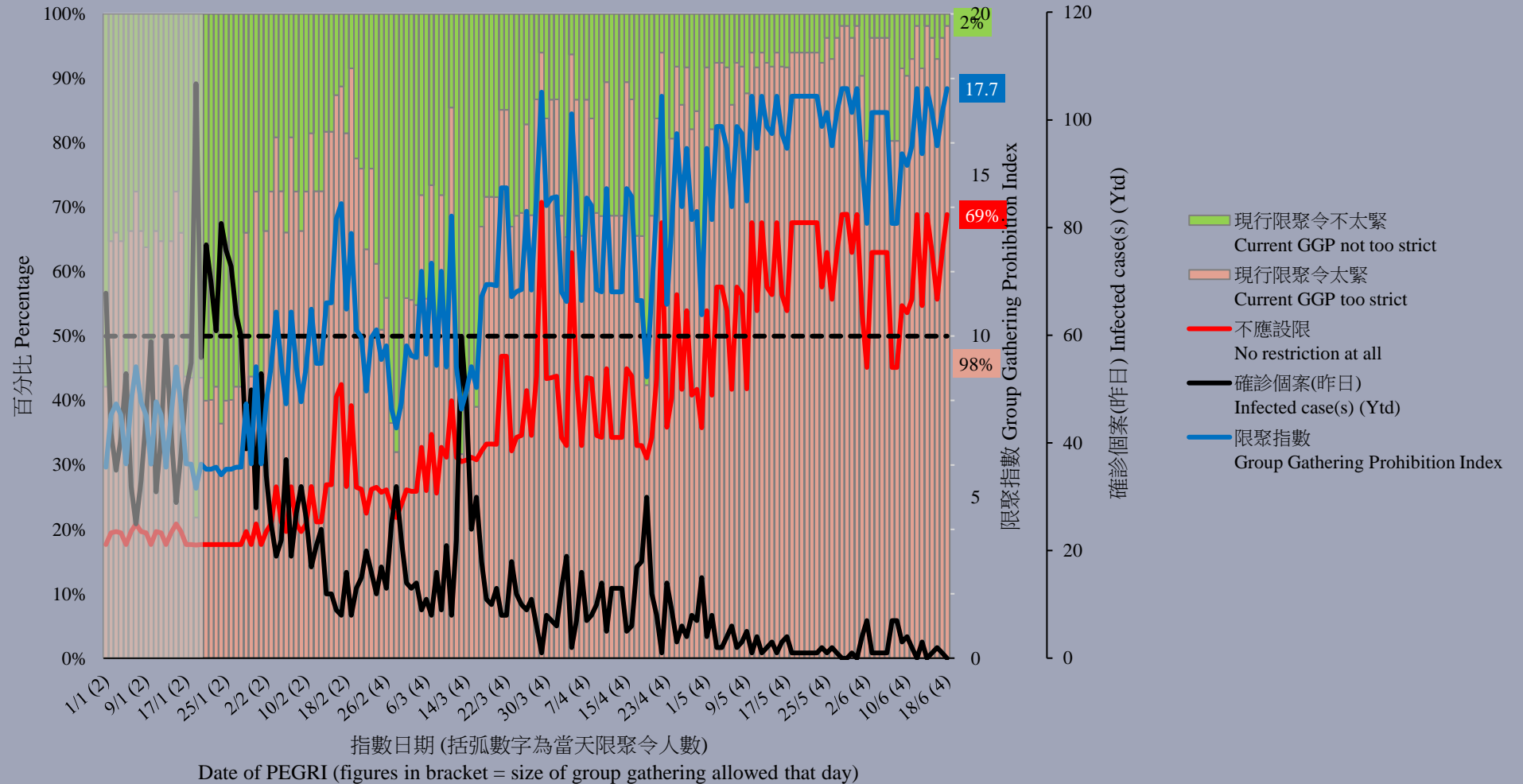
意見題目	Opinion Questions
<p>你認為香港應否無條件全面撤銷「限聚令」？</p> <ul style="list-style-type: none"><li>▪ 應該無條件撤銷「限聚令」</li><li>▪ 不應該，應視乎疫情而定</li><li>▪ 不知道／很難說</li></ul> <p>[追問沒有選擇應該“無條件撤銷「限聚令」”者]</p> <p>你認為每天新增確診個案數應是多少，才適合將「限聚令」訂於2人？</p> <p>你認為每天新增確診個案數應是多少，才適合將「限聚令」訂於4人？</p> <p>你認為每天新增確診個案數應是多少，才適合將「限聚令」訂於8人？</p> <p>你認為每天新增確診個案數應是多少，才適合將「限聚令」訂於16人？</p> <p>你認為感染個案清零多少天後，限聚令應該全面撤銷？</p> <p>請於以下欄位列舉你認為合適的 [個案數 及 限聚人數] 組合.....</p>	<p>Do you think the regulation prohibiting gatherings of more than a specific number of people in public places should be completely lifted unconditionally in Hong Kong?</p> <ul style="list-style-type: none"><li>▪ Yes, the ban should be lifted unconditionally</li><li>▪ No, it should depend on the epidemic situation</li><li>▪ Don't know / hard to say</li></ul> <p>[For respondents NOT answering “Yes, the ban should be lifted unconditionally”]</p> <p>How many newly confirmed cases each day should there be before it would be appropriate to prohibit gatherings of more than 2 people?</p> <p>How many newly confirmed cases each day should there be before it would be appropriate to prohibit gatherings of more than 4 people?</p> <p>How many newly confirmed cases each day should there be before it would be appropriate to prohibit gatherings of more than 8 people?</p> <p>How many newly confirmed cases each day should there be before it would be appropriate to prohibit gatherings of more than 16 people?</p> <p>After how many days of zero infection do you think the group gathering ban should be lifted altogether?</p> <p>Please list combinations of [number of cases &amp; number of people allowed in gatherings] that you think is appropriate in the field below:</p>

# 調查結果 - 限聚接受程度

## Survey Result – Group Gathering Prohibition Acceptance Level

5

限聚接受程度 Group Gathering Prohibition Acceptance Level



## 限聚指數 - 分析評論

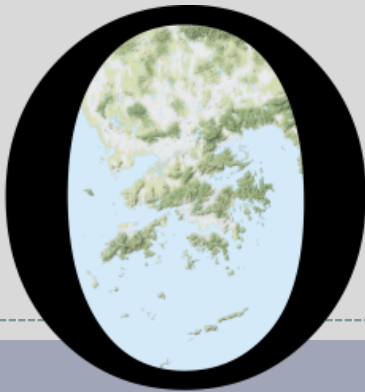
### Group Gathering Prohibition Index – Commentary

6

中科監察研究員潘麒智指出：「香港第四波疫情接近尾聲，因疫情緩和，已暫停的非預約診症服務亦逐漸恢復正常。不過，有長期住院的病患者家屬表示，政府至今仍未放寬探病安排，是非常不人道的。我希望政府可以考慮讓已接種兩劑疫苗的家屬，有限度地到醫院探病。」

**KC Poon, researcher from the CHINAT Monitor, observed, “The fourth wave of the epidemic in Hong Kong is coming to an end. The once suspended non-scheduled medical consultation service is gradually returning to normal as the epidemic subsides. However, family members of some hospitalized chronically ill patients said that it was very inhumane for the government not to relax the visiting arrangements. I hope the government would consider allowing those family members who have received two doses of vaccine to visit these hospitalized patients under some restricted conditions.”**

# POP



---

HONG KONG PUBLIC OPINION PROGRAM

HONG KONG PUBLIC OPINION RESEARCH INSTITUTE

香港民意研究所 之 香港民意研究計劃

---

**“We Hongkongers” Panel Survey**

**Latest Results**

**June 18, 2021**

# Contact Information - “We Hongkongers” Panel Survey

8

	<b>HKPOP Panel</b>
Date of survey	June 11, 3pm – June 16, 3pm
Survey method	Online survey
Target population	Hong Kong residents aged 12+
Total sample size	5,471
Response rate	5.9%
Sampling error	Sampling error of percentages at +/-1% at 95% confidence level
Weighting method	The figures are rim-weighted according to 1) gender-age distribution, educational attainment (highest level attended) distribution, economic activity status distribution of Hong Kong population and by District Councils population figures from Census and Statistics Department; 2) Voting results of District Councils Election from Registration and Electoral Office; 3) rating distribution of Chief Executive from regular tracking surveys.



# Survey Result - “We Hongkongers” Panel Survey

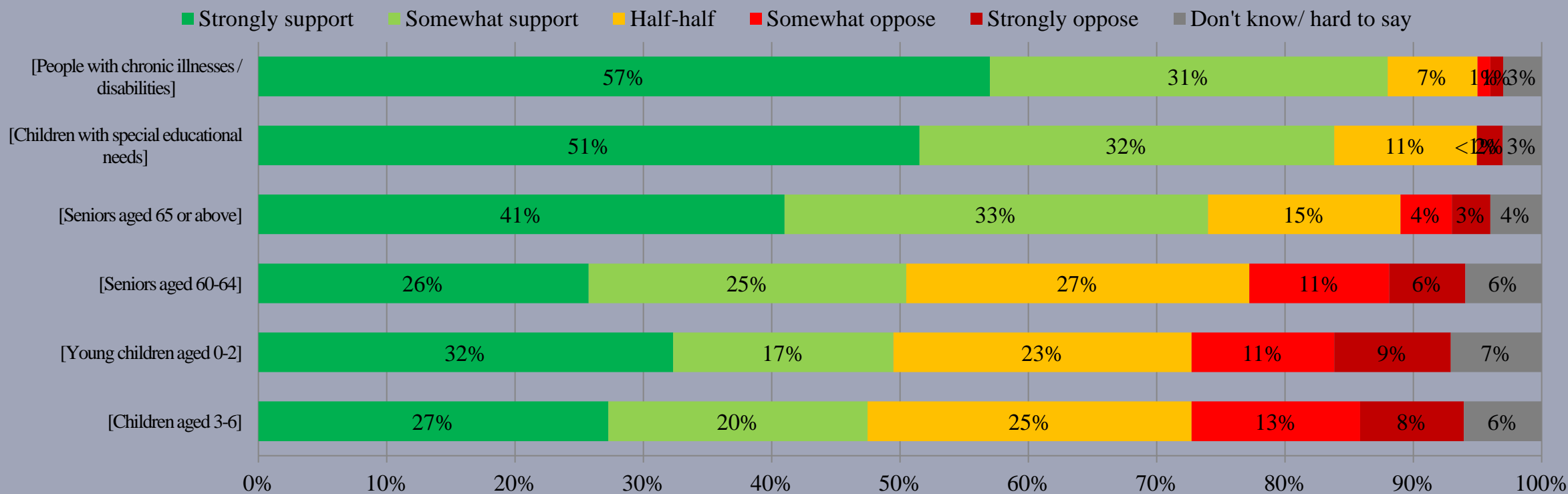
- Latest survey period: 11-16/6/2021
- Question: Q1 How much do you support or oppose the government setting up “living allowance for carers” to provide cash assistance to family members who are caring for the following categories of people and are in financial need?

<b>Combined<sup>^</sup></b>	<b>[People with chronic illnesses / disabilities]</b>	<b>[Children with special educational needs]</b>	<b>[Seniors aged 65 or above]</b>	<b>[Seniors aged 60-64]</b>	<b>[Young children aged 0-2]</b>	<b>[Children aged 3-6]</b>
Strongly support	57%	51%	41%	26%	32%	27%
Somewhat support	31%	32%	33%	25%	17%	20%
Half-half	7%	11%	15%	27%	23%	25%
Somewhat oppose	1%	<1%	4%	11%	11%	13%
Strongly oppose	1%	2%	3%	6%	9%	8%
Don't know / hard to say	3%	3%	4%	6%	7%	6%
Mean <sup>†</sup>	4.5	4.3	4.1	3.6	3.6	3.5

<sup>^</sup> The aggregated figures come from adjusting the by-group weighted figures using ratio of “pan-democratic” vs “non-pan-democratic” collected in regular tracking survey.

# Survey Result - “We Hongkongers” Panel Survey

- Latest survey period: 11-16/6/2021
- Question: Q1 How much do you support or oppose the government setting up “living allowance for carers” to provide cash assistance to family members who are caring for the following categories of people and are in financial need?



^ The aggregated figures come from adjusting the by-group weighted figures using ratio of “pan-democratic” vs “non-pan-democratic” collected in regular tracking survey.

# Survey Result - “We Hongkongers” Panel Survey

23

- Latest survey period: 11-16/6/2021
- Question : Q2 Currently, the government restricts recipients of Comprehensive Social Security Assistance, Old Age Living Allowance or Disability Allowance from applying for “living allowance for carers” at the same time. How much do you support or oppose this restriction?

	Combined <sup>^</sup> (n=5,231)	
Strongly support (the restriction)	12%	} 28%
Somewhat support (the restriction)	15%	
Half-half	20%	
Somewhat oppose (the restriction)	17%	} 41%
Strongly oppose (the restriction)	24%	
Don't know / hard to say	11%	
Mean <sup>†</sup>	2.7	

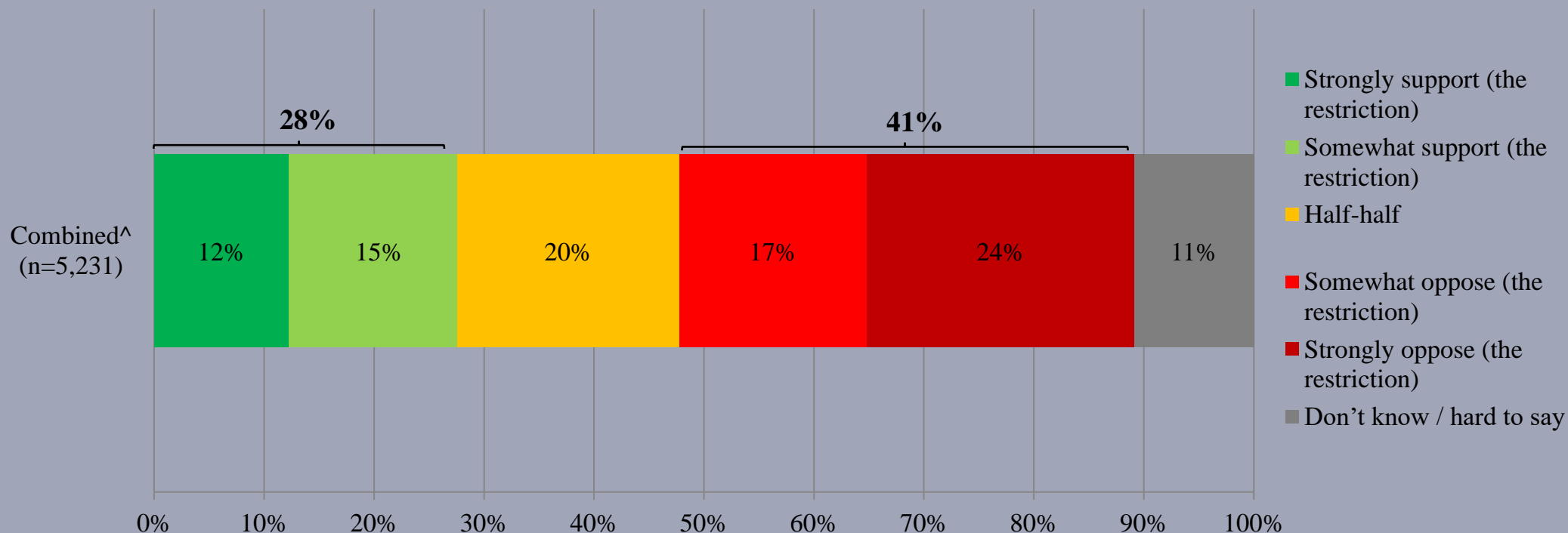
<sup>^</sup> The aggregated figures come from adjusting the by-group weighted figures using ratio of “pan-democratic” vs “non-pan-democratic” collected in regular tracking survey.

<sup>†</sup> The mean value is calculated by quantifying all individual responses into 1, 2, 3, 4, 5 marks according to their degree of positive level, where 1 is the lowest and 5 the highest, and then calculate the sample mean.

# Survey Result - “We Hongkongers” Panel Survey

24

- Latest survey period: 11-16/6/2021
- Question : Q2 Currently, the government restricts recipients of Comprehensive Social Security Assistance, Old Age Living Allowance or Disability Allowance from applying for “living allowance for carers” at the same time. How much do you support or oppose this restriction?



^ The aggregated figures come from adjusting the by-group weighted figures using ratio of “pan-democratic” vs “non-pan-democratic” collected in regular tracking survey.