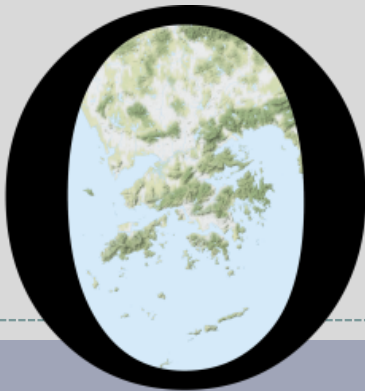


# POP



---

HONG KONG PUBLIC OPINION PROGRAM

HONG KONG PUBLIC OPINION RESEARCH INSTITUTE

香港民意研究所 之 香港民意研究計劃

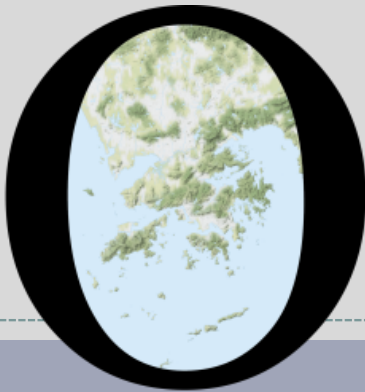
---

**“We Hongkongers” Panel Survey**

**Latest Results**

**May 21, 2021**

# POP



---

HONG KONG PUBLIC OPINION PROGRAM

HONG KONG PUBLIC OPINION RESEARCH INSTITUTE

香港民意研究所 之 香港民意研究計劃

---

限聚指數

**Group Gathering Prohibition Index**

**21/5/2021**

# 樣本資料 - 限聚指數基準調查

## Contact Information - Group Gathering Prohibition Index Benchmark Survey

3

	香港民研意見群組成員 HKPOP Panel
調查日期 Survey date	16/4 15:00 – 21/4 15:00
調查方法 Survey method	以電郵接觸群組成員，並於網上完成調查 Online survey
訪問對象 Target population	十二歲或以上的香港市民 Hong Kong residents aged 12+
總成功樣本 Total sample size	6,330
回應比率 Response rate	6.7%
抽樣誤差 Sampling error	95% 置信水平，百分比誤差 +/-1% Sampling error of percentages at +/-1% at 95% confidence level
加權方法 Weighting method	按照1) 政府統計處提供的全港人口年齡及性別分佈統計數字、各區議會人口數字； 2) 選舉事務處提供的區議會選舉結果；3) 常規調查中的特首評分分佈數字，以 「反覆多重加權法」作出調整。 The figures are rim-weighted according to 1) gender-age distribution of Hong Kong population and by District Councils population figures from Census and Statistics Department; 2) Voting results of District Councils Election from Registration and Electoral Office; 3) rating distribution of Chief Executive from regular tracking surveys.

# 限聚指數

## Group Gathering Prohibition Index

4

- 最新調查日期 **Latest survey date: 16-21/4/2021 (N=6,330)**
- 上次調查日期 **Last survey date: 22-29/3/2021 (N=6,806)**
- 上上次調查日期 **Second last survey date: 8-22/3/2021 (N=6,210)**

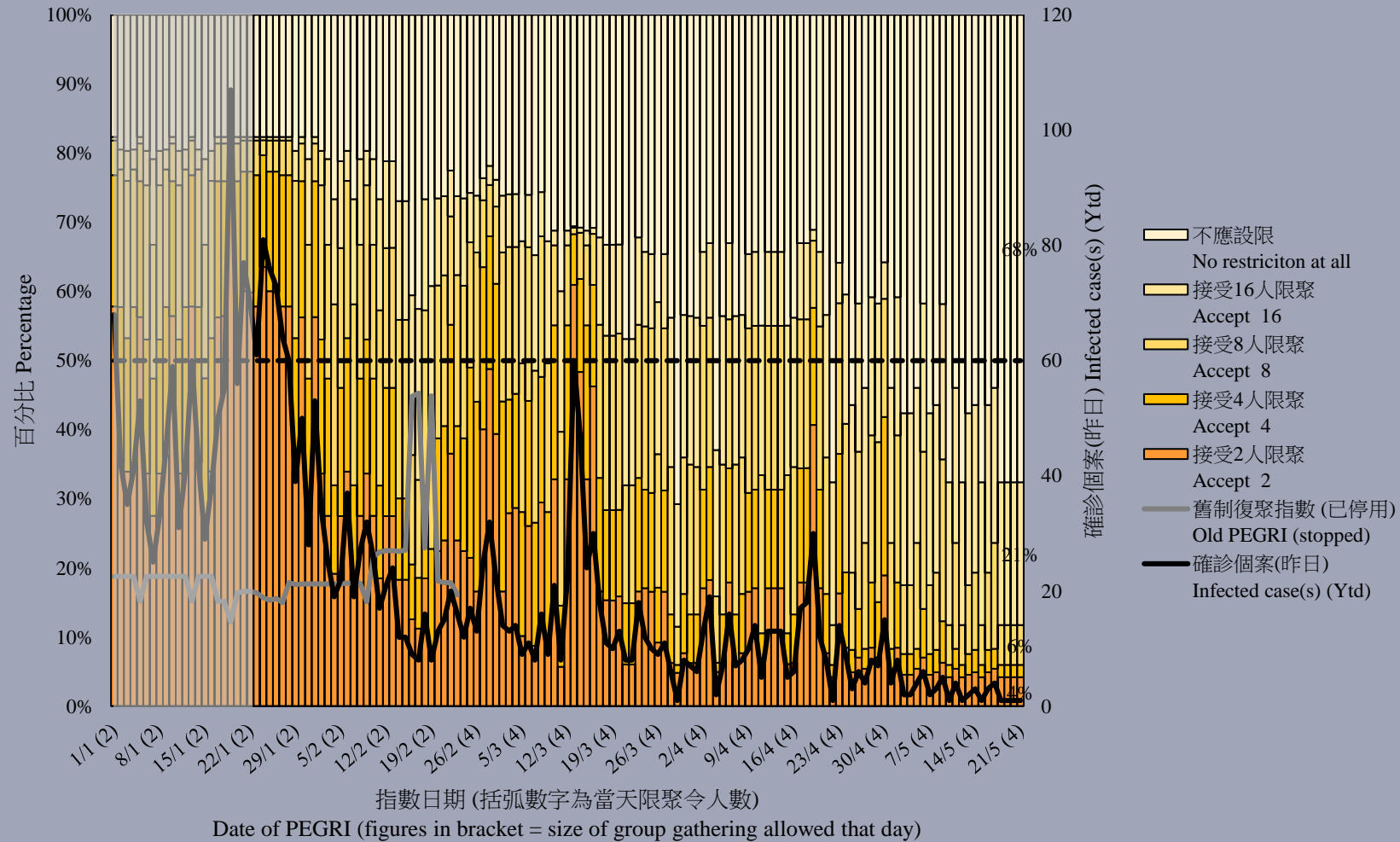
意見題目	Opinion Questions
<p>你認為香港應否無條件全面撤銷「限聚令」？</p> <ul style="list-style-type: none"><li>▪ 應該無條件撤銷「限聚令」</li><li>▪ 不應該，應視乎疫情而定</li><li>▪ 不知道／很難說</li></ul> <p>[追問沒有選擇應該“無條件撤銷「限聚令」”者] 你認為每天新增確診個案數應是多少，才適合將「限聚令」訂於2人？ 你認為每天新增確診個案數應是多少，才適合將「限聚令」訂於4人？ 你認為每天新增確診個案數應是多少，才適合將「限聚令」訂於8人？ 你認為每天新增確診個案數應是多少，才適合將「限聚令」訂於16人？</p> <p>請於以下欄位列舉你認為合適的 [個案數 及 限聚人數] 組合.....</p>	<p>Do you think the regulation prohibiting gatherings of more than a specific number of people in public places should be completely lifted unconditionally in Hong Kong?</p> <ul style="list-style-type: none"><li>▪ Yes, the ban should be lifted unconditionally</li><li>▪ No, it should depend on the epidemic situation</li><li>▪ Don't know / hard to say</li></ul> <p>[For respondents NOT answering “Yes, the ban should be lifted unconditionally”] How many newly confirmed cases each day should there be before it would be appropriate to prohibit gatherings of more than 2 people? How many newly confirmed cases each day should there be before it would be appropriate to prohibit gatherings of more than 4 people? How many newly confirmed cases each day should there be before it would be appropriate to prohibit gatherings of more than 8 people? How many newly confirmed cases each day should there be before it would be appropriate to prohibit gatherings of more than 16 people?</p> <p>Please list combinations of [number of cases &amp; number of people allowed in gatherings] that you think is appropriate in the field below:</p>

# 調查結果 - 限聚接受程度

## Survey Result – Group Gathering Prohibition Acceptance Level

5

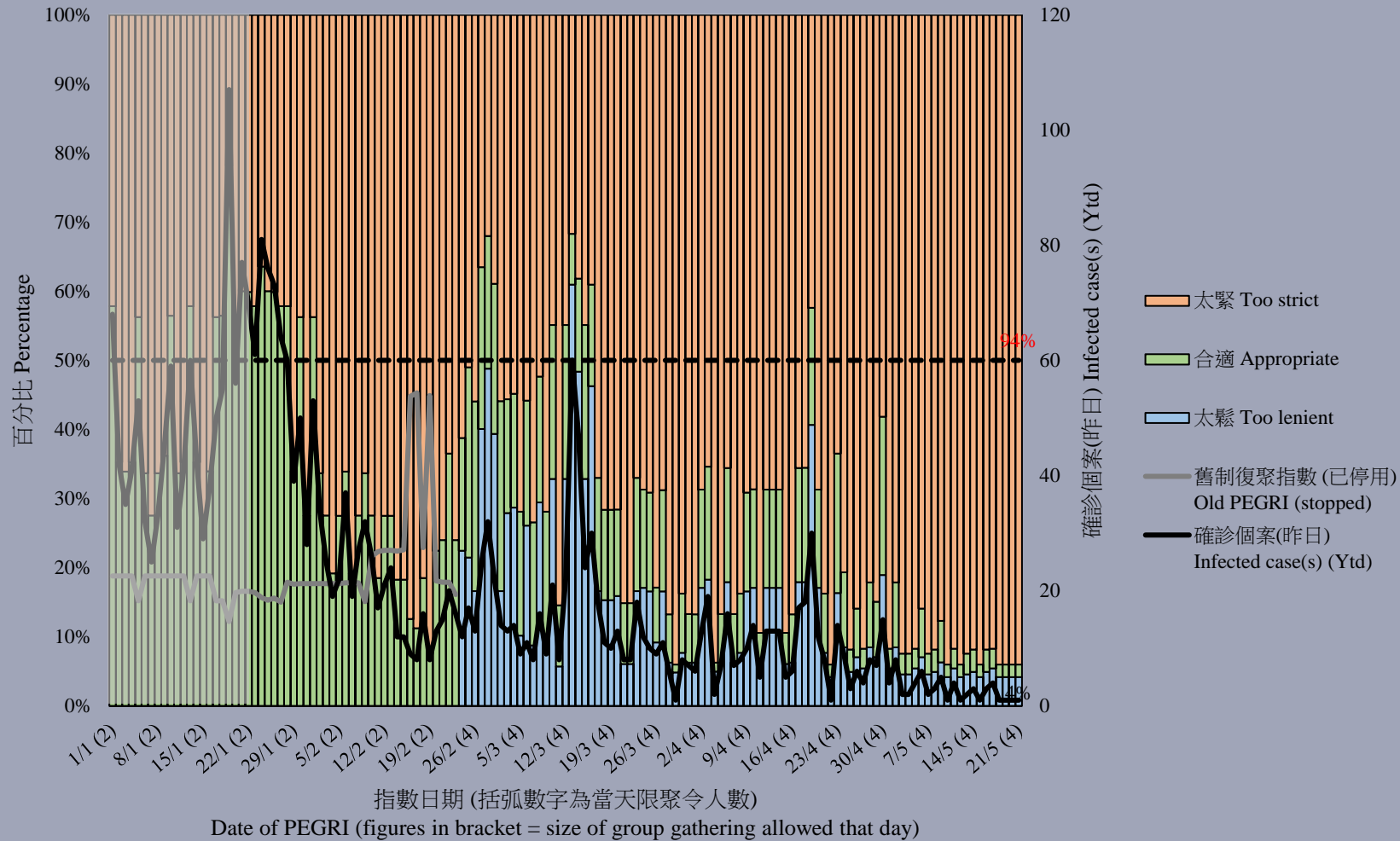
限聚接受程度 Group Gathering Prohibition Acceptance Level



# 調查結果 - 限聚接受程度

## Survey Result – Group Gathering Prohibition Acceptance Level

限聚接受程度 Group Gathering Prohibition Acceptance Level

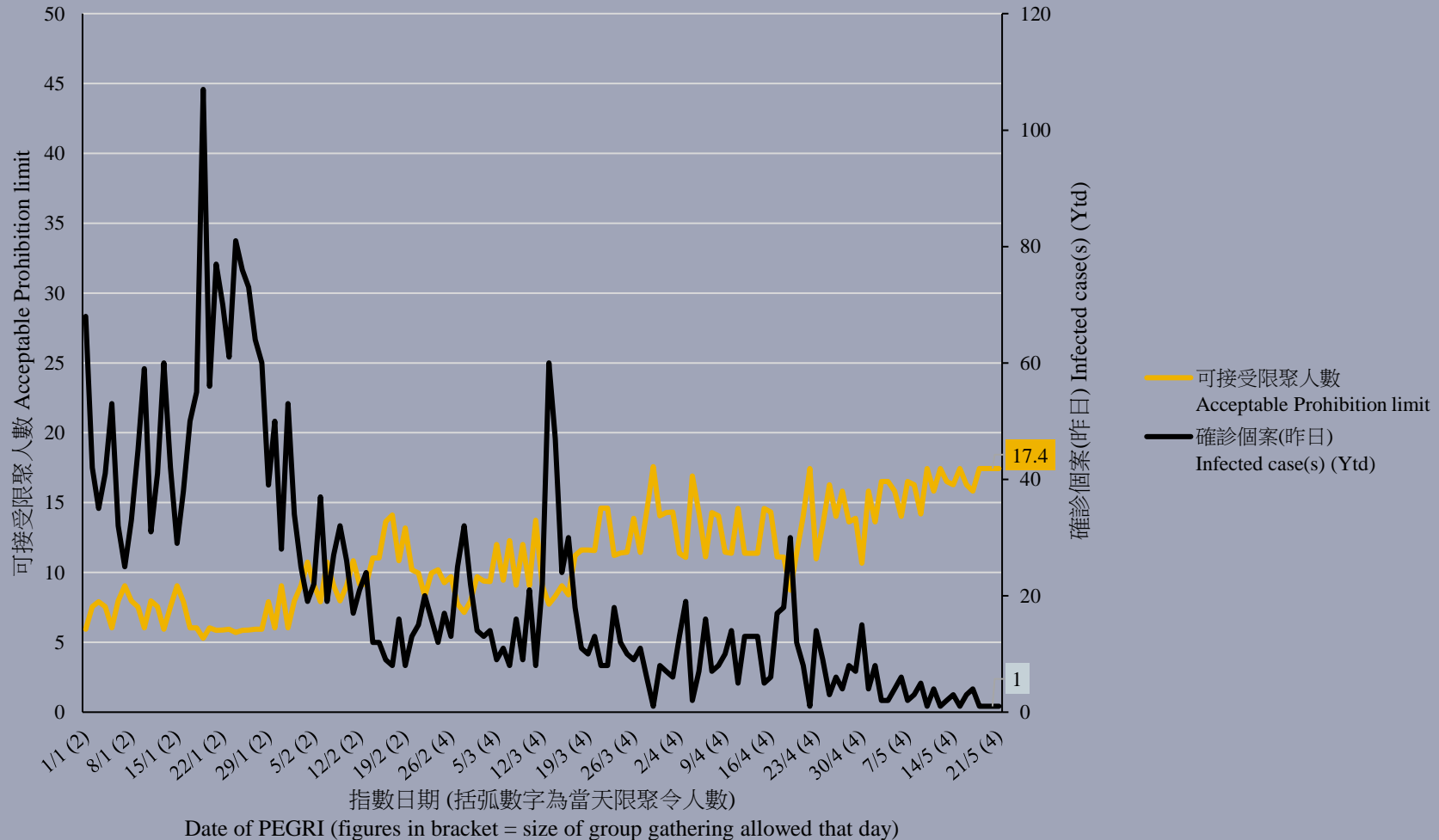


# 調查結果 - 限聚指數

## Survey Result - Group Gathering Prohibition Index

7

限聚指數 Group Gathering Prohibition Index

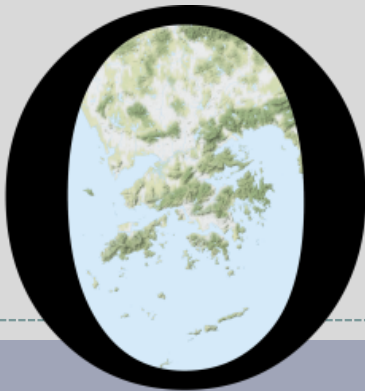


中科監察研究員潘麒智指出，「截至昨天5月20日，香港已經踏入第27日無源頭不明個案。我認為A、B類的食肆防疫措施，應該盡快鬆綁並提升到6-8人一枱，好讓營商環境得以恢復。此外，政府亦應繼續做好把關工作，勿讓疫情由海外再度傳入香港。」

**KC Poon, researcher from the CHINAT Monitor, observed, “As of yesterday May 20, Hong Kong has reached the 27th day of zero infection from unknown sources. I suggest relaxing the preventive measures for Category A and B restaurants to 6-8 persons per table as soon as possible so that the business environment can be restored. Meanwhile, the Government should continue its gate-keeping efforts to prevent the recurrence of the epidemic from overseas.”**



# POP



---

HONG KONG PUBLIC OPINION PROGRAM

HONG KONG PUBLIC OPINION RESEARCH INSTITUTE

香港民意研究所 之 香港民意研究計劃

---

**“We Hongkongers” Panel Survey**

**Latest Results**

**May 21, 2021**

# Contact Information - “We Hongkongers” Panel Survey

10

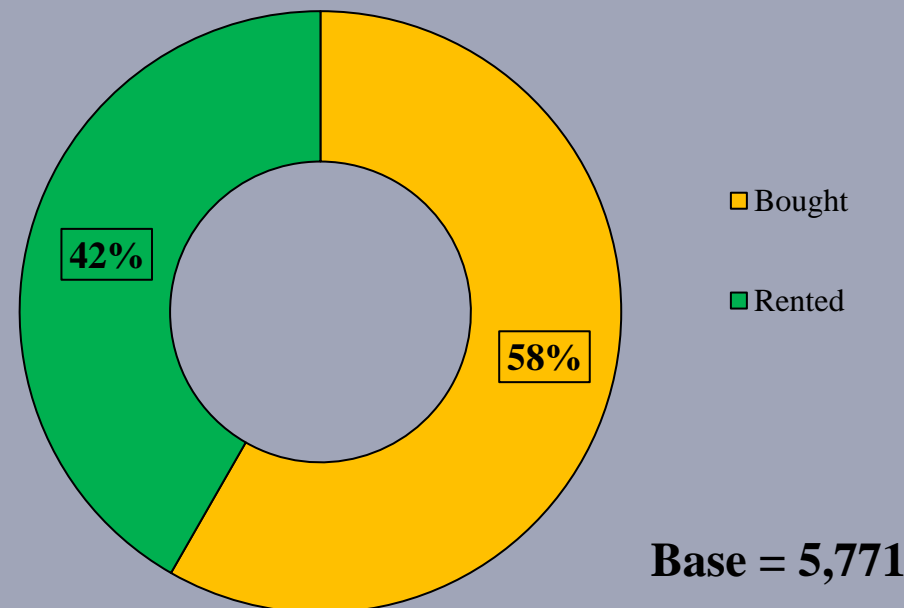
	<b>HKPOP Panel</b>
Date of survey	May 17, 3pm – May 20, 3pm
Survey method	Online survey
Target population	Hong Kong residents aged 12+
Total sample size	6,090
Response rate	6.5%
Sampling error	Sampling error of percentages at +/-1% at 95% confidence level
Weighting method	The figures are rim-weighted according to 1) gender-age distribution, educational attainment (highest level attended) distribution, economic activity status distribution of Hong Kong population and by District Councils population figures from Census and Statistics Department; 2) Voting results of District Councils Election from Registration and Electoral Office; 3) rating distribution of Chief Executive from regular tracking surveys.

# Survey Result - “We Hongkongers” Panel Survey

11

- Latest survey period: 17-20/5/2021
- Question: Q1 Is the flat you currently live in bought or rented?

	Combined^ (n=5,771)
Bought	58%
Rented (including rent free or provided by employer)	42%

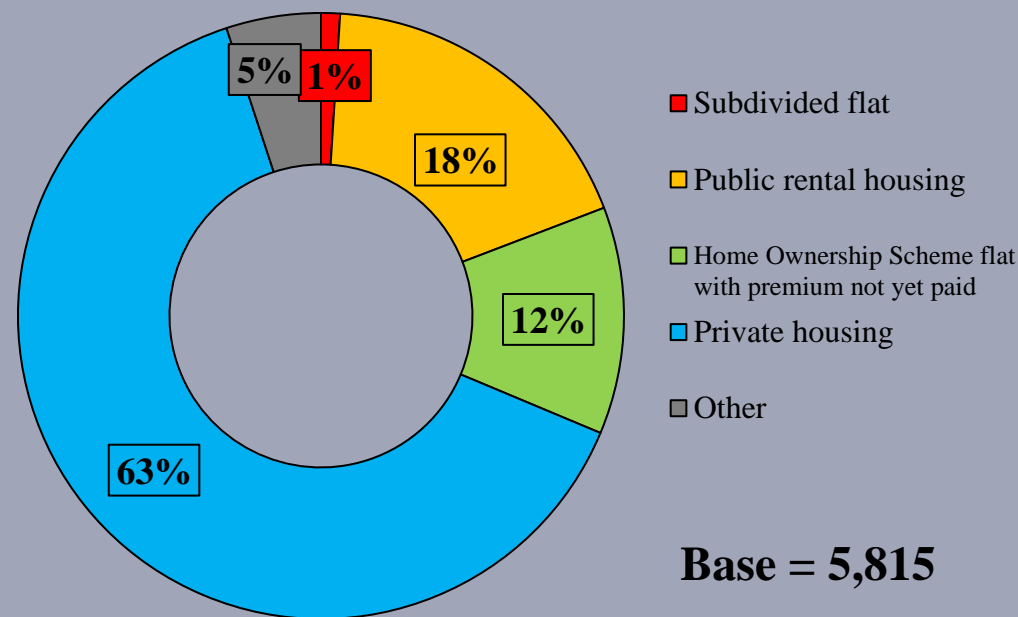


^ The aggregated figures come from adjusting the by-group weighted figures using ratio of “pan-democratic” vs “non-pan-democratic” collected in regular tracking survey.

# Survey Result - “We Hongkongers” Panel Survey

- Latest survey period: 17-20/5/2021
- Question: Q2 What kind of flat do you currently live in?

	Combined^ (n=5,815)
Subdivided flat (including rooftop dwellings, cubicle apartments, bedspace apartments, etc.)	1%
Public rental housing (including Senior Citizen Residences Scheme flats and other public rental housing units)	18%
Home Ownership Scheme flat with premium not yet paid (including Sandwich Class Housing Scheme flats and other subsidised)	12%
Private housing (including HOS flat and other subsidised housing with premium paid, village houses and staff quarters)	63%
Other (including dormitories for students, elderly homes, industrial buildings, hotels, temporary housing, etc.)	5%



^ The aggregated figures come from adjusting the by-group weighted figures using ratio of “pan-democratic” vs “non-pan-democratic” collected in regular tracking survey.

# Survey Result - “We Hongkongers” Panel Survey

13

- Latest survey period: 17-20/5/2021
- Question: Q3 On average, the rent per square foot for subdivided flats is higher than that of a small private flat. How reasonable or unreasonable do you think this is?

	Combined <sup>^</sup> (n=5,822)	
Very reasonable	1%	} 4%
Somewhat reasonable	3%	
Half-half	12%	
Somewhat unreasonable	15%	} 83%
Very unreasonable	<b>67%</b>	
Don't know / hard to say	2%	
Mean <sup>†</sup>	1.5	

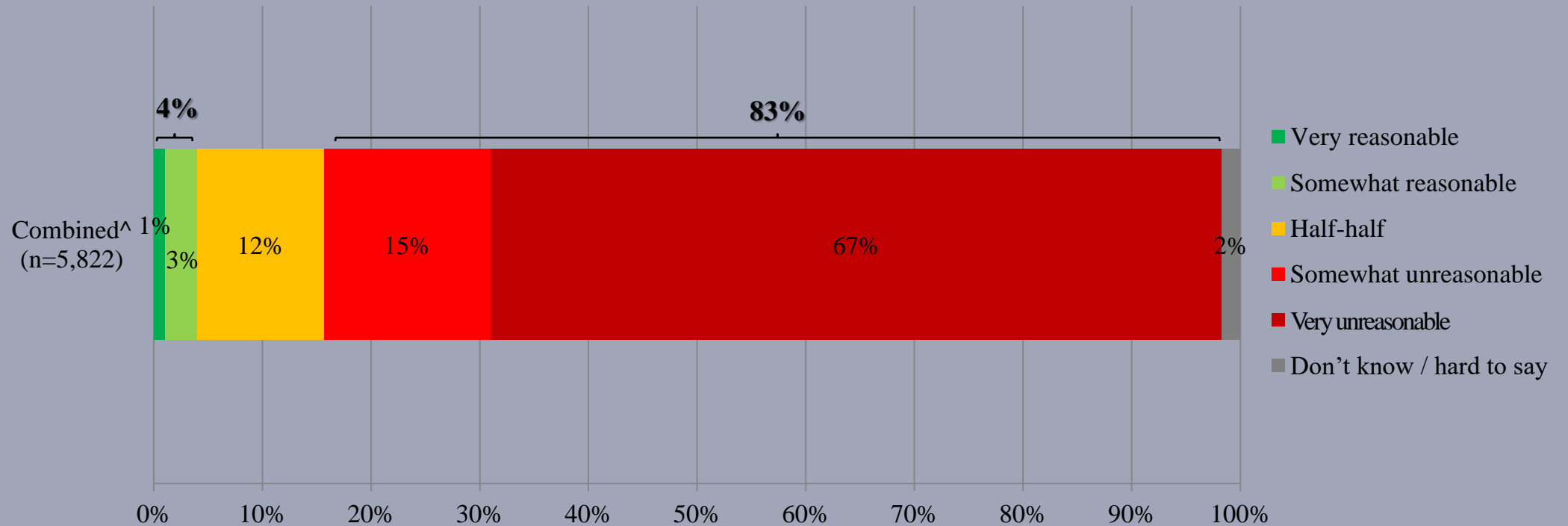
<sup>^</sup> The aggregated figures come from adjusting the by-group weighted figures using ratio of “pan-democratic” vs “non-pan-democratic” collected in regular tracking survey.

<sup>†</sup> The mean value is calculated by quantifying all individual responses into 1, 2, 3, 4, 5 marks according to their degree of positive level, where 1 is the lowest and 5 the highest, and then calculate the sample mean.

# Survey Result - “We Hongkongers” Panel Survey

14

- Latest survey period: 17-20/5/2021
- Question: Q3 On average, the rent per square foot for subdivided flats is higher than that of a small private flat. How reasonable or unreasonable do you think this is?



^ The aggregated figures come from adjusting the by-group weighted figures using ratio of “pan-democratic” vs “non-pan-democratic” collected in regular tracking survey.

# Survey Result - “We Hongkongers” Panel Survey

15

- Latest survey period: 17-20/5/2021
- Question: Q4 How much do you support or oppose a new law that sets a ceiling on the start-up rental of new rental contracts for subdivided flats?

	Combined <sup>^</sup> (n=5,823)	
Very support	37%	} 63%
Somewhat support	26%	
Half-half	18%	
Somewhat oppose	6%	} 11%
Very oppose	5%	
Don't know / hard to say	7%	
Mean <sup>†</sup>	3.9	

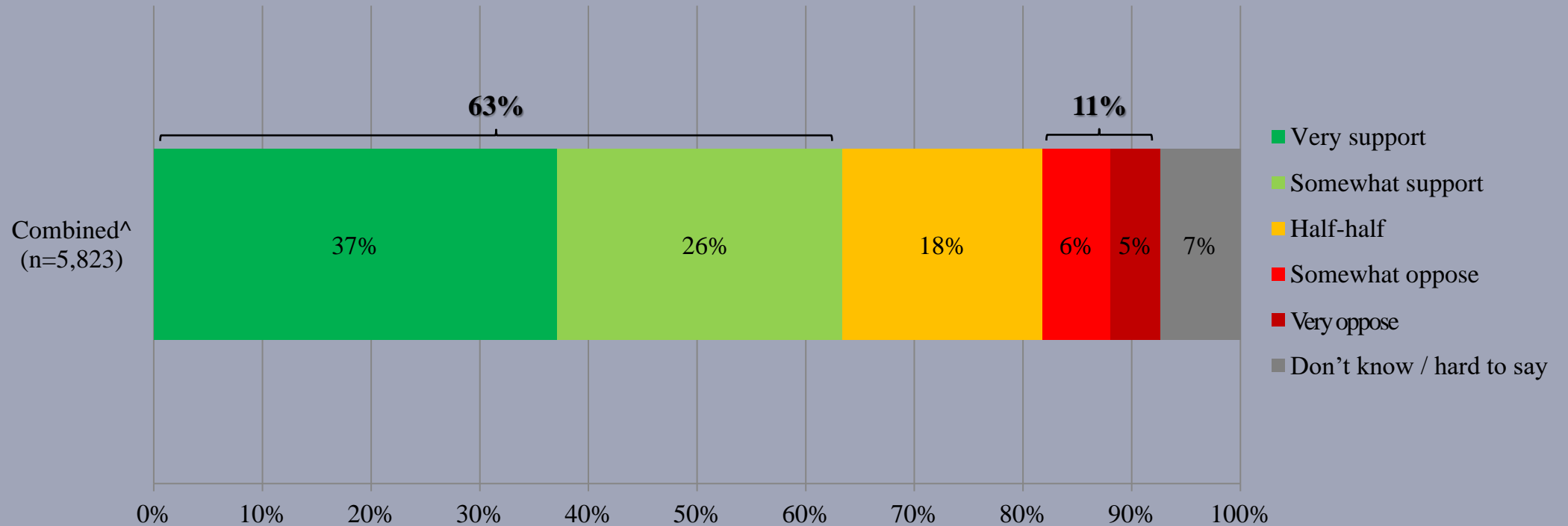
<sup>^</sup> The aggregated figures come from adjusting the by-group weighted figures using ratio of “pan-democratic” vs “non-pan-democratic” collected in regular tracking survey.

<sup>†</sup> The mean value is calculated by quantifying all individual responses into 1, 2, 3, 4, 5 marks according to their degree of positive level, where 1 is the lowest and 5 the highest, and then calculate the sample mean.

# Survey Result - “We Hongkongers” Panel Survey

16

- Latest survey period: 17-20/5/2021
- Question: Q4 How much do you support or oppose a new law that sets a ceiling on the start-up rental of new rental contracts for subdivided flats?



^ The aggregated figures come from adjusting the by-group weighted figures using ratio of “pan-democratic” vs “non-pan-democratic” collected in regular tracking survey.