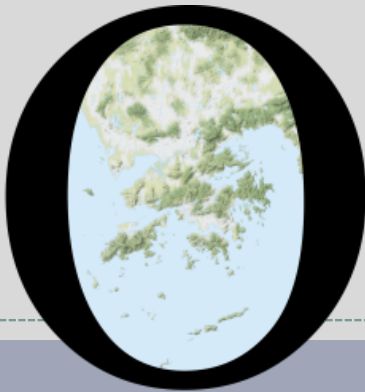


POP



HONG KONG PUBLIC OPINION PROGRAM

HONG KONG PUBLIC OPINION RESEARCH INSTITUTE

香港民意研究所 之 香港民意研究計劃

“We Hongkongers” Panel Survey

Latest Results

May 14, 2021

POP



HONG KONG PUBLIC OPINION PROGRAM

HONG KONG PUBLIC OPINION RESEARCH INSTITUTE

香港民意研究所 之 香港民意研究計劃

限聚指數

Group Gathering Prohibition Index

14/5/2021

樣本資料 - 限聚指數基準調查

Contact Information - Group Gathering Prohibition Index Benchmark Survey

3

	香港民研意見群組成員 HKPOP Panel
調查日期 Survey date	16/4 15:00 – 21/4 15:00
調查方法 Survey method	以電郵接觸群組成員，並於網上完成調查 Online survey
訪問對象 Target population	十二歲或以上的香港市民 Hong Kong residents aged 12+
總成功樣本 Total sample size	6,330
回應比率 Response rate	6.7%
抽樣誤差 Sampling error	95% 置信水平，百分比誤差 +/-1% Sampling error of percentages at +/-1% at 95% confidence level
加權方法 Weighting method	按照1) 政府統計處提供的全港人口年齡及性別分佈統計數字、各區議會人口數字； 2) 選舉事務處提供的區議會選舉結果；3) 常規調查中的特首評分分佈數字，以 「反覆多重加權法」作出調整。 The figures are rim-weighted according to 1) gender-age distribution of Hong Kong population and by District Councils population figures from Census and Statistics Department; 2) Voting results of District Councils Election from Registration and Electoral Office; 3) rating distribution of Chief Executive from regular tracking surveys.

限聚指數

Group Gathering Prohibition Index

4

- **最新調查日期 Latest survey date: 16-21/4/2021 (N=6,330)**
- **上次調查日期 Last survey date: 22-29/3/2021 (N=6,806)**
- **上上次調查日期 Second last survey date: 8-22/3/2021 (N=6,210)**

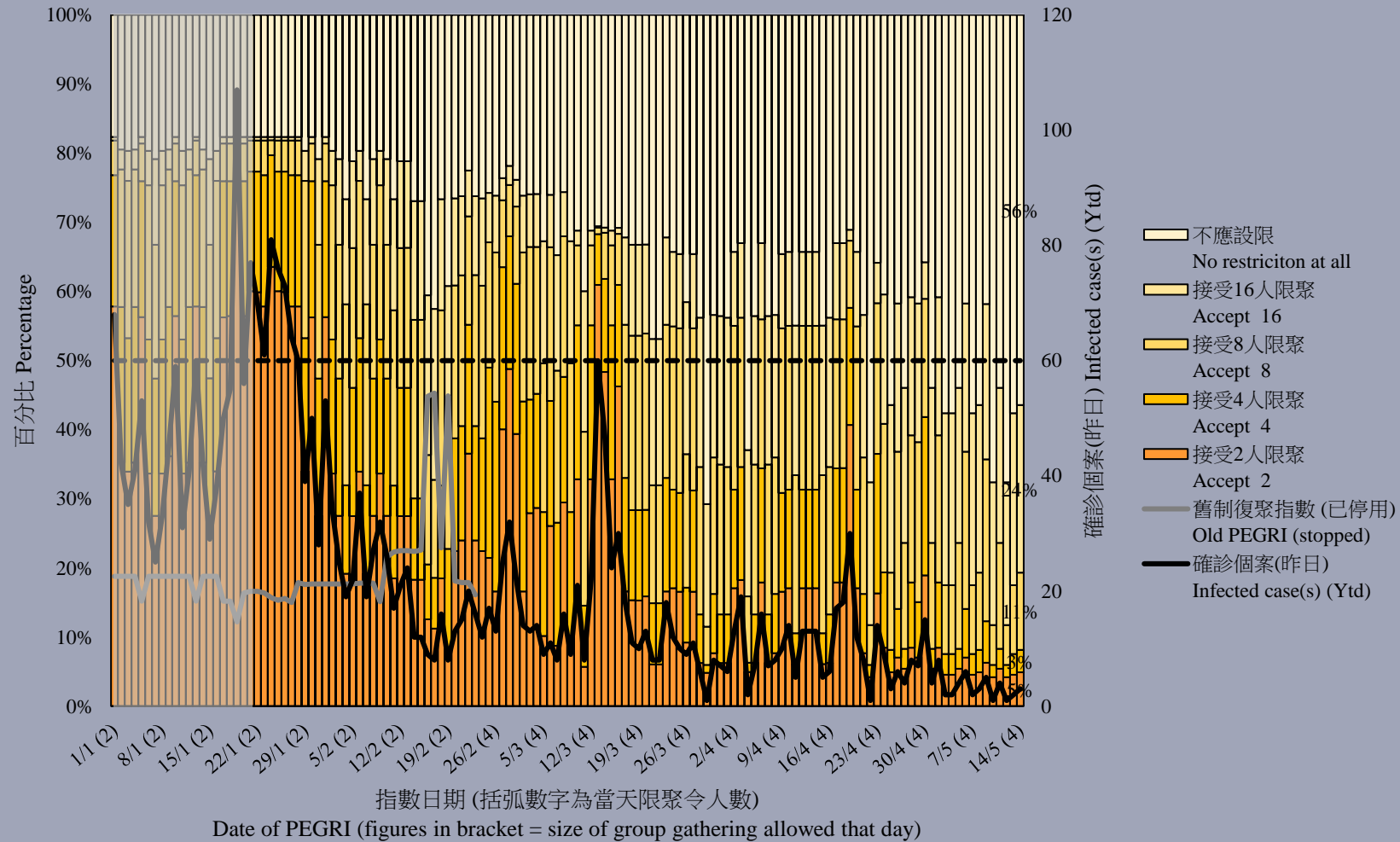
意見題目	Opinion Questions
<p>你認為香港應否無條件全面撤銷「限聚令」？</p> <ul style="list-style-type: none">▪ 應該無條件撤銷「限聚令」▪ 不應該，應視乎疫情而定▪ 不知道／很難說 <p>[追問沒有選擇應該“無條件撤銷「限聚令」”者] 你認為每天新增確診個案數應是多少，才適合將「限聚令」訂於2人？ 你認為每天新增確診個案數應是多少，才適合將「限聚令」訂於4人？ 你認為每天新增確診個案數應是多少，才適合將「限聚令」訂於8人？ 你認為每天新增確診個案數應是多少，才適合將「限聚令」訂於16人？</p> <p>請於以下欄位列舉你認為合適的 [個案數 及 限聚人數] 組合……</p>	<p>Do you think the regulation prohibiting gatherings of more than a specific number of people in public places should be completely lifted unconditionally in Hong Kong?</p> <ul style="list-style-type: none">▪ Yes, the ban should be lifted unconditionally▪ No, it should depend on the epidemic situation▪ Don't know / hard to say <p>[For respondents NOT answering “Yes, the ban should be lifted unconditionally”] How many newly confirmed cases each day should there be before it would be appropriate to prohibit gatherings of more than 2 people? How many newly confirmed cases each day should there be before it would be appropriate to prohibit gatherings of more than 4 people? How many newly confirmed cases each day should there be before it would be appropriate to prohibit gatherings of more than 8 people? How many newly confirmed cases each day should there be before it would be appropriate to prohibit gatherings of more than 16 people?</p> <p>Please list combinations of [number of cases & number of people allowed in gatherings] that you think is appropriate in the field below:</p>

調查結果 - 限聚接受程度

Survey Result – Group Gathering Prohibition Acceptance Level

5

限聚接受程度 Group Gathering Prohibition Acceptance Level

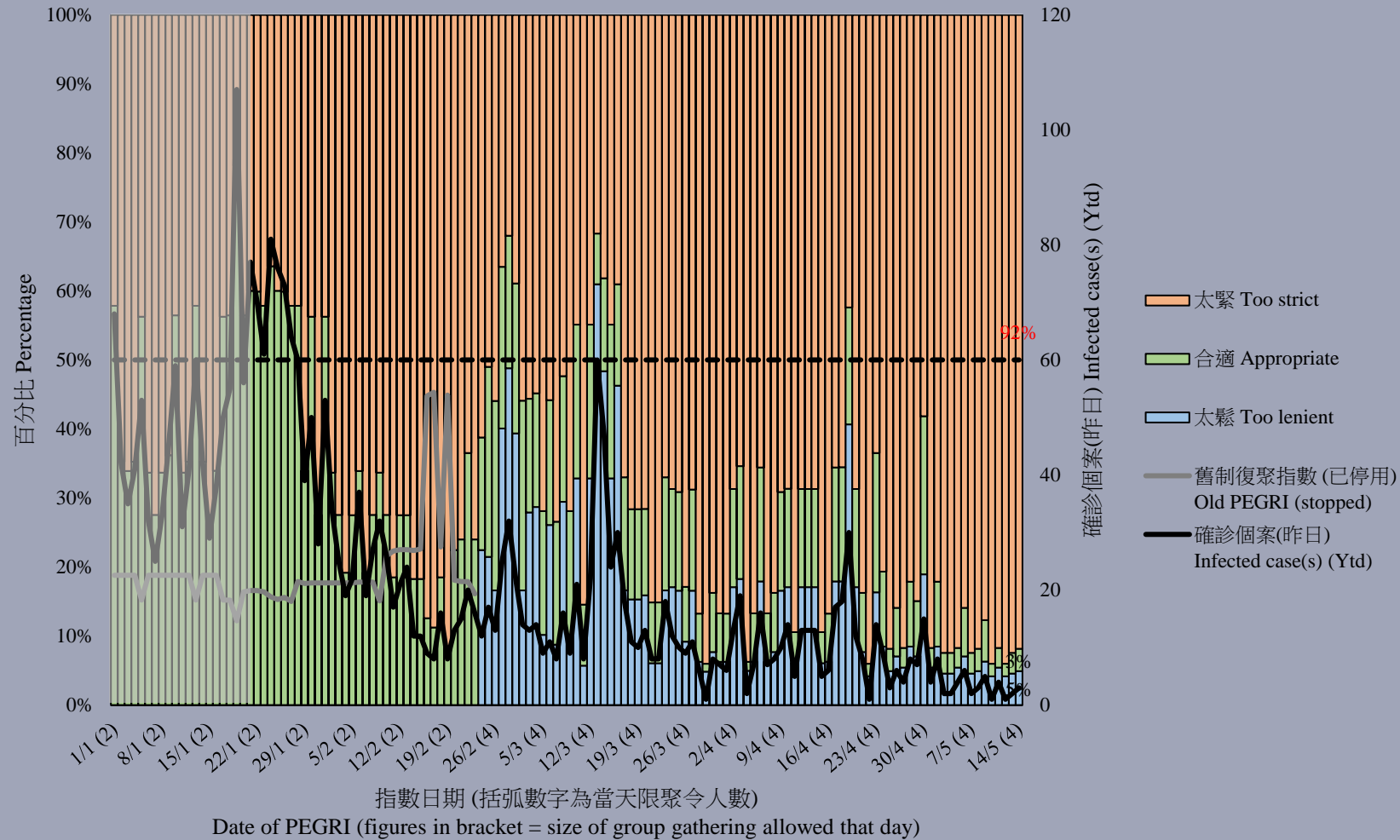


調查結果 - 限聚接受程度

Survey Result – Group Gathering Prohibition Acceptance Level

6

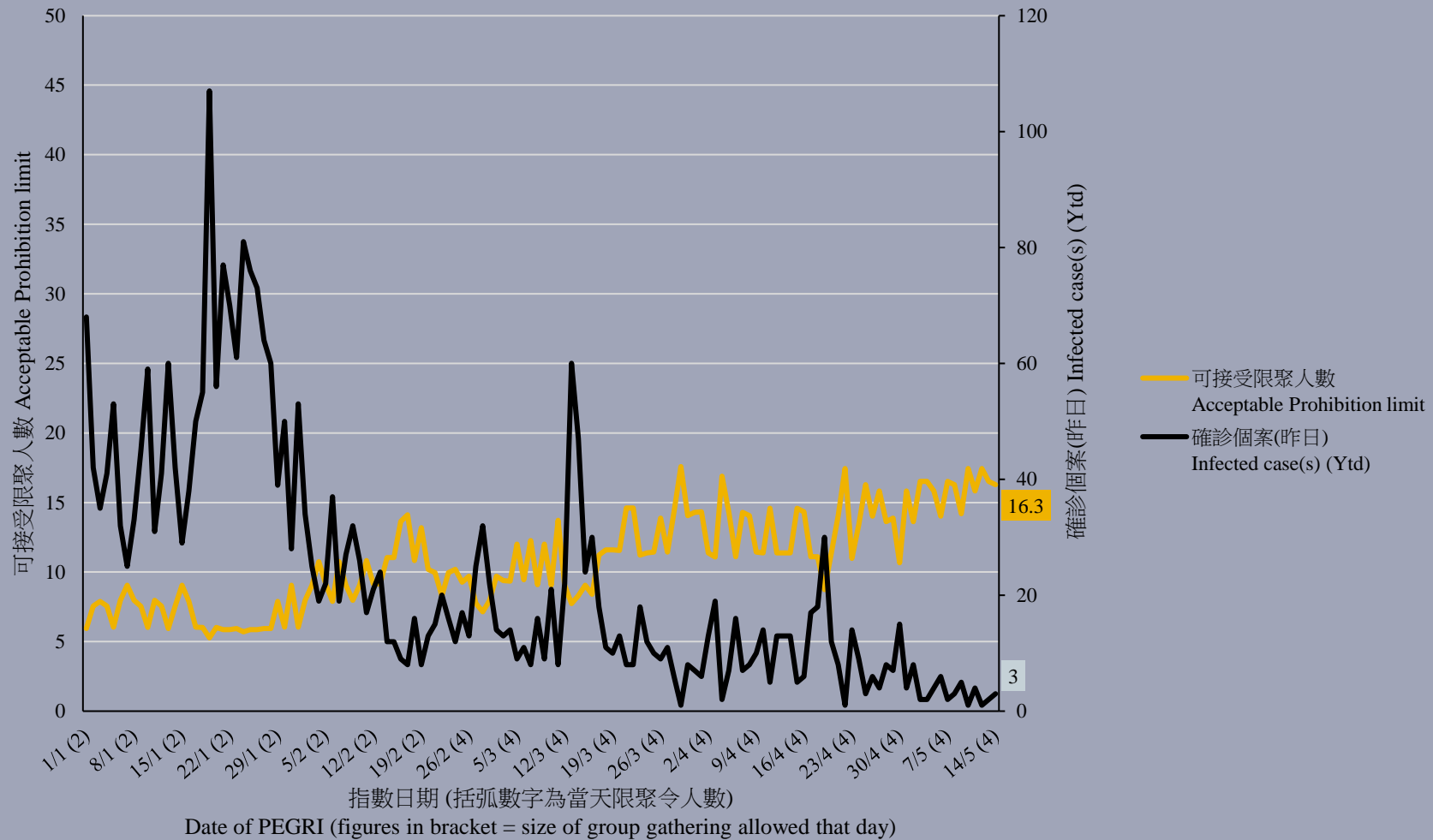
限聚接受程度 Group Gathering Prohibition Acceptance Level



調查結果 - 限聚指數

Survey Result - Group Gathering Prohibition Index

限聚指數 Group Gathering Prohibition Index



限聚指數 - 分析評論

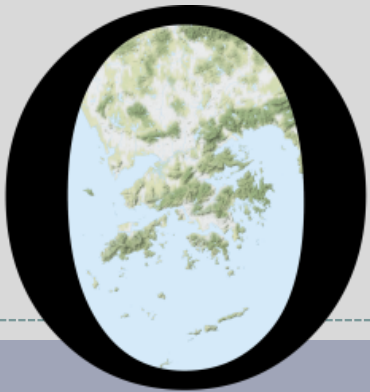
Group Gathering Prohibition Index – Commentary

8

中科監察研究員潘麒智指出，「政府以『疫苗氣泡』為基礎的新措施由4月29日實行至今，執法部門與各界別對相關法例仍在摸索當中。變種病毒來勢洶洶，但本地感染個案就維持在低位數字。因此，針對疫情發展，政府似乎應從外地入境人士加強檢測着手，而非以限聚令懲罰香港市民。我期望香港政府會進一步放寬限聚人數，讓市民重過正常生活。」

KC Poon, researcher from the CHINAT Monitor, observed, “The government’s new measure based on ‘vaccine bubble’ has been implemented since 29 April, but the law enforcement units and various industrial sectors are still working hard to sort out the legislated measures. In view of the development of the epidemic, it seems that the government should starts to strengthen the testing of foreign arrivals instead of punishing Hong Kong people by imposing restrictions on group gathering. I hope that the Hong Kong government will further relax the restriction on the number of people who can gather, so that people can lead a normal life again.”

POP



HONG KONG PUBLIC OPINION PROGRAM

HONG KONG PUBLIC OPINION RESEARCH INSTITUTE

香港民意研究所 之 香港民意研究計劃

“We Hongkongers” Panel Survey

Latest Results

May 14, 2021

Contact Information - “We Hongkongers” Panel Survey

10

	HKPOP Panel
Date of survey	May 10, 3pm – May 13, 3pm
Survey method	Online survey
Target population	Hong Kong residents aged 12+
Total sample size	7,216
Response rate	7.7%
Sampling error	Sampling error of percentages at +/-1% at 95% confidence level
Weighting method	The figures are rim-weighted according to 1) gender-age distribution, educational attainment (highest level attended) distribution, economic activity status distribution of Hong Kong population and by District Councils population figures from Census and Statistics Department; 2) Voting results of District Councils Election from Registration and Electoral Office; 3) rating distribution of Chief Executive from regular tracking surveys.

Survey Result - “We Hongkongers” Panel Survey

11

- Latest survey period: 10-13/5/2021
- Question: Q1 In general, how much effort do you think the management of various universities in Hong Kong are paying to protect academic freedom?

	Pro-democracy camp supporters (n=6,157)	Non-pro-democracy camp supporters* (n=723)	Combined^ (n=6,880)
A lot of effort	1%	21%	13%
Quite some effort	5%	22%	16%
Half-half	18%	19%	19%
Not much effort	27%	13%	18%
Very little effort / No effort at all	45%	16%	27%
Don't know / hard to say	5%	9%	7%
Mean†	1.8	3.2	2.7

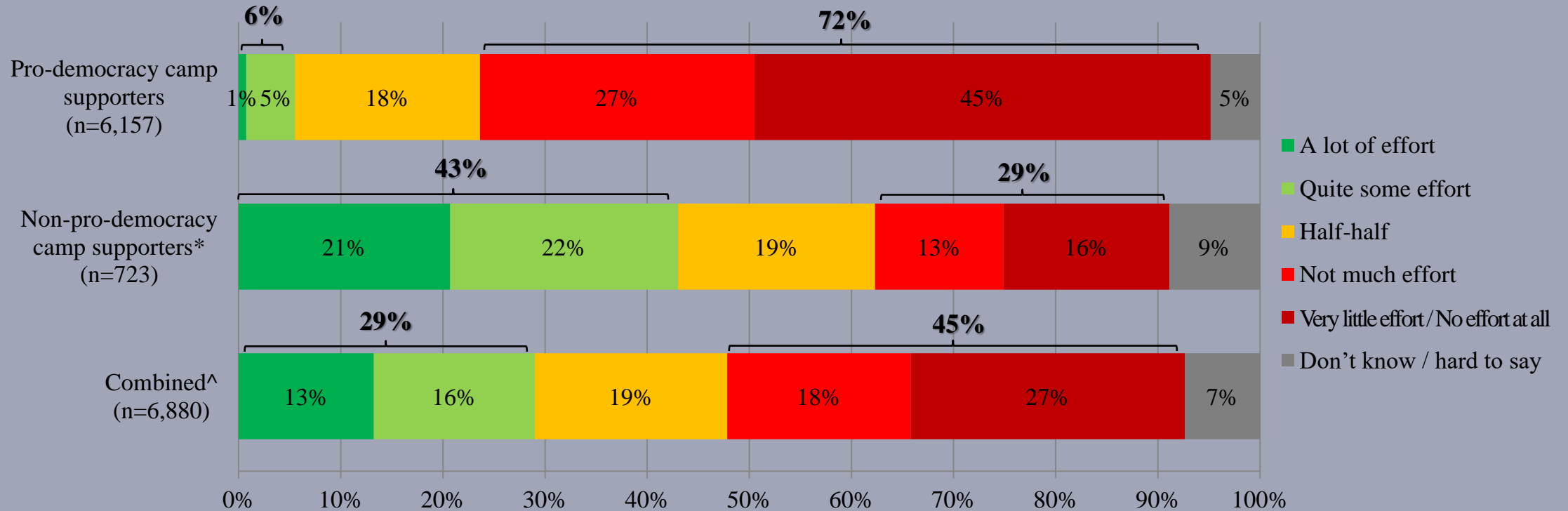
* Include: pro-establishment camp supporters, centrist supporters, no political inclination / politically neutral / do not belong to any camp

^ The aggregated figures come from adjusting the by-group weighted figures using ratio of “pan-democratic” vs “non-pan-democratic” collected in regular tracking survey.

† The mean value is calculated by quantifying all individual responses into 1, 2, 3, 4, 5 marks according to their degree of positive level, where 1 is the lowest and 5 the highest, and then calculate the sample mean.

Survey Result - “We Hongkongers” Panel Survey

- Latest survey period: 10-13/5/2021
- Question: Q1 In general, how much effort do you think the management of various universities in Hong Kong are paying to protect academic freedom?



* Include: pro-establishment camp supporters, centrist supporters, no political inclination / politically neutral / do not belong to any camp

^ The aggregated figures come from adjusting the by-group weighted figures using ratio of “pan-democratic” vs “non-pan-democratic” collected in regular tracking survey.

Survey Result - “We Hongkongers” Panel Survey

13

- Latest survey period: 10-13/5/2021
- Question: Q2 In general, how much restriction do you think the Hong Kong national security law has imposed on academic freedom in Hong Kong?

	Pro-democracy camp supporters (n=6,157)	Non-pro-democracy camp supporters* (n=724)	Combined^ (n=6,881)	
A lot of restriction	76%	24%	44%	
Quite some restriction	18%	14%	15%	
	} 94%		} 59%	
Half-half	4%	17%	12%	
Not much restriction	<1%	13%	8%	
Very little restriction / No restriction at all	2%	27%	18%	
	} 2%		} 26%	
Don't know / hard to say	<1%	5%	3%	
Mean†	4.7	2.9	3.6	

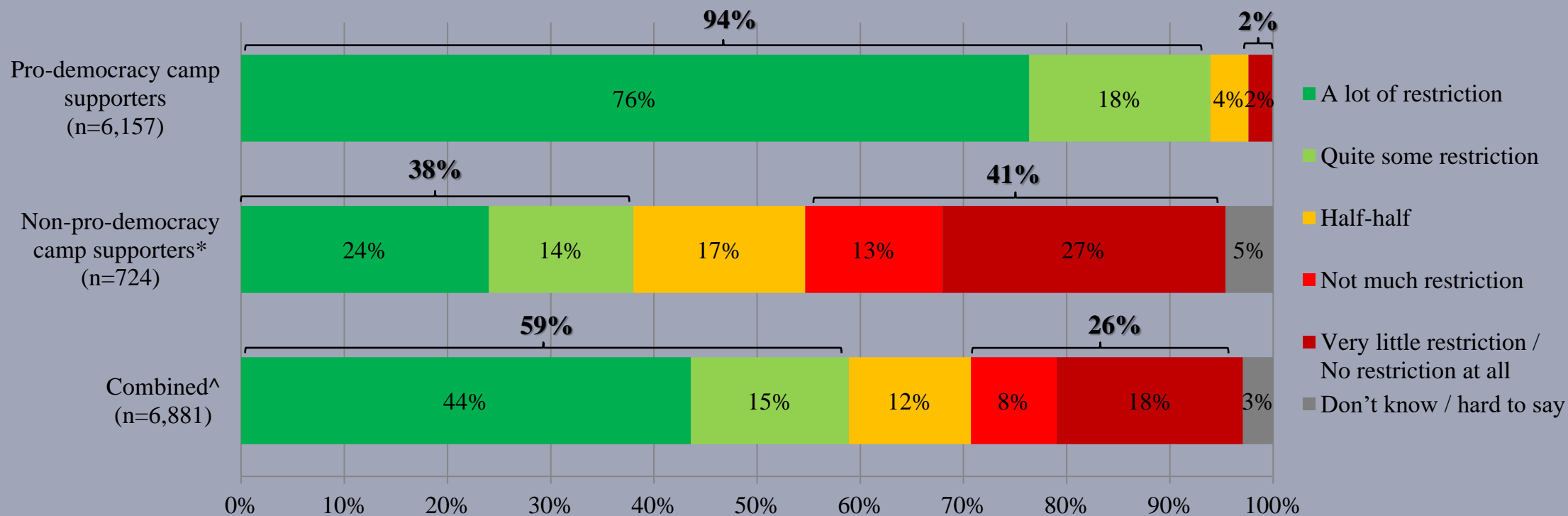
* Include: pro-establishment camp supporters, centrist supporters, no political inclination / politically neutral / do not belong to any camp

^ The aggregated figures come from adjusting the by-group weighted figures using ratio of “pan-democratic” vs “non-pan-democratic” collected in regular tracking survey.

† The mean value is calculated by quantifying all individual responses into 1, 2, 3, 4, 5 marks according to their degree of positive level, where 1 is the lowest and 5 the highest, and then calculate the sample mean.

Survey Result - “We Hongkongers” Panel Survey

- Latest survey period: 10-13/5/2021
- Question: Q2 In general, how much restriction do you think the Hong Kong national security law has imposed on academic freedom in Hong Kong?



* Include: pro-establishment camp supporters, centrist supporters, no political inclination / politically neutral / do not belong to any camp

^ The aggregated figures come from adjusting the by-group weighted figures using ratio of “pan-democratic” vs “non-pan-democratic” collected in regular tracking survey.