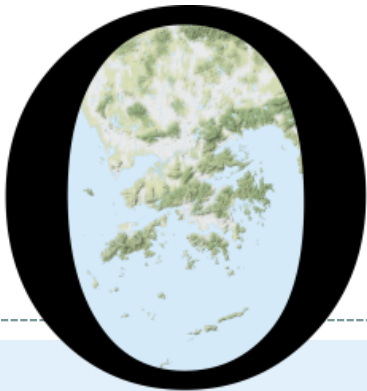


POP



HONG KONG PUBLIC OPINION PROGRAM

HONG KONG PUBLIC OPINION RESEARCH INSTITUTE

香港民意研究所 之 香港民意研究計劃

Latest Tracking Poll Results

April 27, 2021

Contact Information

2

- Date of survey: 19-22/4/2021
- Survey method: Random telephone survey conducted by real interviewers
- Target population: Cantonese-speaking Hong Kong residents aged 18+
- Sample size: 1,004 (including 498 landline and 506 mobile samples)
- Effective response rate: 54.5%
- Sampling error: Sampling error of percentages not more than +/-4%, that of net values not more than +/-8% and that of ratings not more than +/-2.1 at 95% conf. level
- Weighting method: Rim-weighted according to figures provided by the Census and Statistics Department. The gender-age distribution of the Hong Kong population came from “Mid-year population for 2020”, while the educational attainment (highest level attended) distribution and economic activity status distribution came from “Women and Men in Hong Kong - Key Statistics (2020 Edition)”.

Survey Topic

3

- Popularity of Chief Executive
- Popularity of HKSAR Government
 - People's satisfaction with the HKSAR Government
 - People's trust in the HKSAR Government
 - People's appraisals of society's conditions
- People's Appraisal of Policy Areas of the Government
 - Handling relation with the Central Government
 - Protecting human rights and freedom
 - Maintaining economic prosperity
 - Pace of democratic development
 - Improving people's livelihood
- Public Sentiment Index

Survey Result - Popularity of Chief Executive

4

• Popularity of Chief Executive

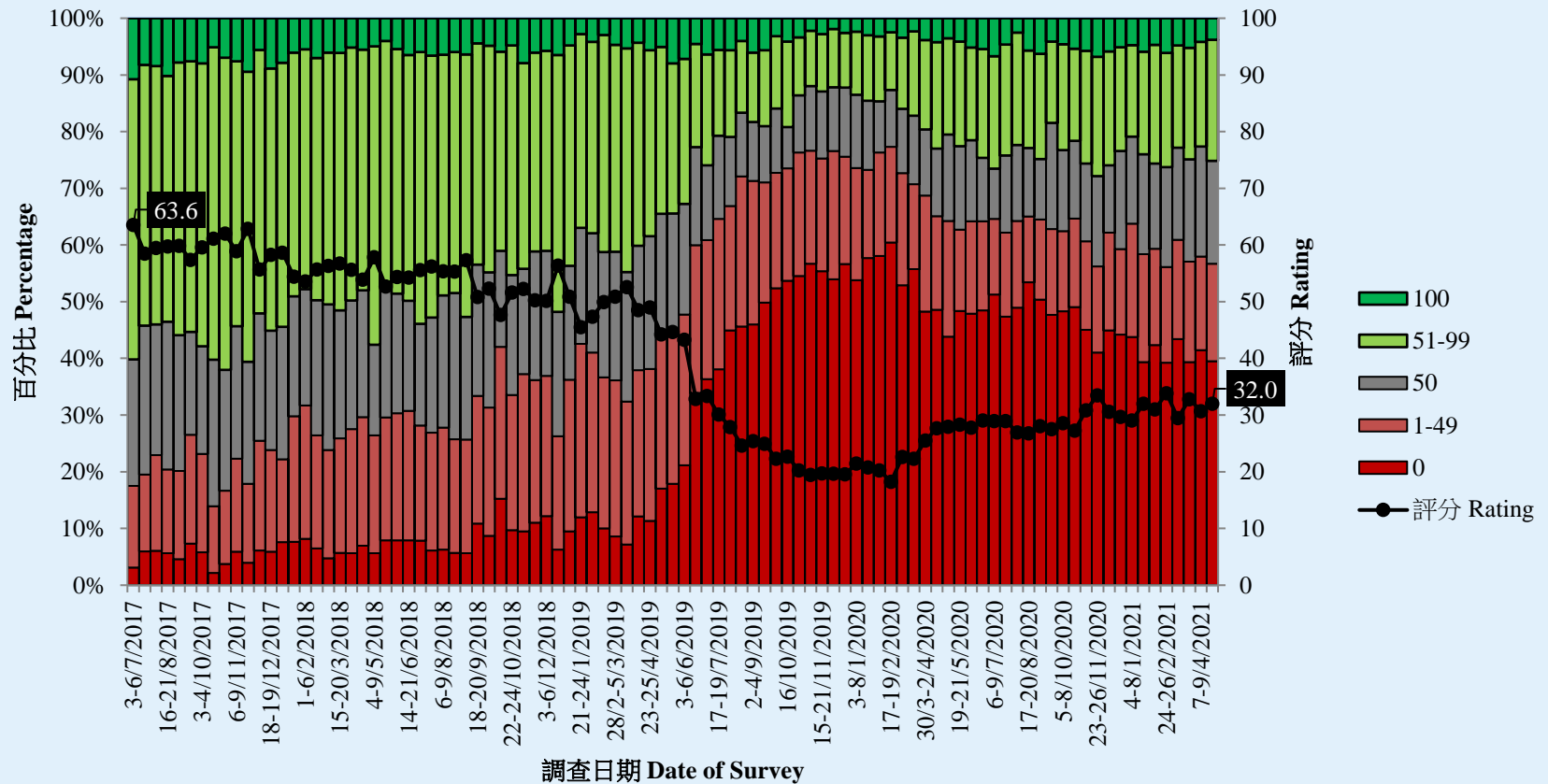
		7-9/4/2021	19-22/4/2021	Change	Record
CE Carrie Lam	Rating	30.7	32.0	▲1.3	Record high since Mar. 2021
	Vote of confidence	20%	18%	▼2%	Record low since Feb. 2021
	Vote of no confidence	67%	68%	--	--
	Net approval rate	-47%	-50%	▼3%	Record low since Mar. 2021

- Our latest survey shows that the popularity rating of CE Carrie Lam is 32.0 marks, with 39% of respondents giving her 0 mark. Her approval rate is 18%, disapproval rate 68%, giving a net popularity of negative 50 percentage points. All popularity figures have not changed much from half a month ago.

Survey Result - Popularity of Chief Executive

5

特首林鄭月娥評分 (按次計算)
Rating for Chief Executive Carrie Lam (Per Poll)
(7/2017 – 4/2021)



Survey Topic

9

- Popularity of Chief Executive
- Popularity of HKSAR Government
 - People's satisfaction with the HKSAR Government
 - People's trust in the HKSAR Government
 - People's appraisals of society's conditions
- People's Appraisal of Policy Areas of the Government
 - Handling relation with the Central Government
 - Protecting human rights and freedom
 - Maintaining economic prosperity
 - Pace of democratic development
 - Improving people's livelihood
- Public Sentiment Index

Survey Result - Popularity of HKSAR Government

10

● People's satisfaction with the HKSAR Government

	22-25/3/2021	19-22/4/2021	Change	Record
Satisfaction rate	21%	19%	▼ 2%	Record low since Jan. 2021
Dissatisfaction rate	62%	59%	▼ 3%	Record low since Feb. 2021
Net satisfaction rate	-42%	-40%	▲ 1%	Record high since Feb. 2021
Mean value	2.2	2.2	--	--

- Regarding the HKSAR Government, the latest satisfaction rate is 19%, whereas 59% feel dissatisfied, thus the net satisfaction stands at negative 40 percentage points. The mean score is 2.2, meaning close to “quite dissatisfied” in general. Figures have not changed much from last month.

Survey Result - Popularity of HKSAR Government

11

● People's trust in the HKSAR Government

	22-25/3/2021	19-22/4/2021	Change	Record
Trust	32%	32%	--	--
Distrust	53%	52%	▼ 1%	Record low since Feb. 2021
Net trust	-21%	-20%	▲ 1%	Record high since Feb. 2021
Mean value	2.5	2.5	--	--

- Regarding people's trust in the HKSAR Government, 32% of the respondents expressed trust, 52% expressed distrust, thus the net trust value is negative 20 percentage points. The mean score is 2.5, meaning between "quite distrust" and "half-half" in general. Figures have not changed much from last month.

Survey Result - Popularity of HKSAR Government

12

● People's appraisals of society's conditions

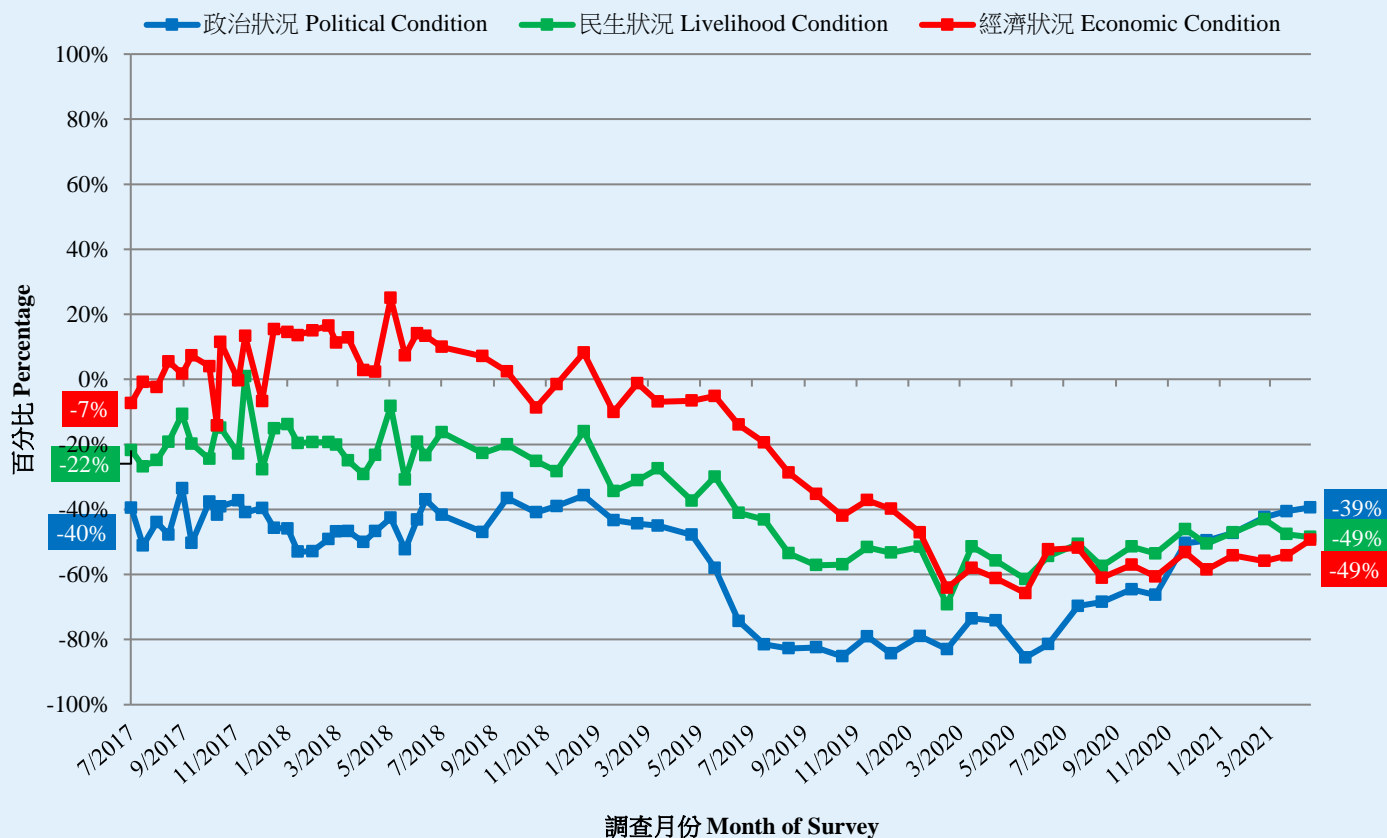
	22-25/3/2021	19-22/4/2021	Change	Record
Political condition	-41%	-39%	▲1%	Record high since Dec. 2018
Livelihood condition	-48%	-49%	▼1%	Record low since Dec. 2020
Economic condition	-54%	-49%	▲5%	Record high since Jan. 2020

- As for people's satisfaction with the current political, livelihood and economic conditions, the latest net satisfaction rates are negative 39, negative 49 and negative 49 percentage points respectively. Except the mean value of economic condition has significantly increased by 0.1, all other figures above remain more or less the same as last month, but the net satisfaction rate with the political condition has registered a new **high** since December 2018.

Survey Result - Popularity of HKSAR Government

13

市民對社會狀況的評價滿意率淨值 (按次計算)
Net satisfaction rates of people's appraisals of society's conditions (Per Poll)
(7/2017 – 4/2021)



Survey Topic

14

- Popularity of Chief Executive
- Popularity of HKSAR Government
 - People's satisfaction with the HKSAR Government
 - People's trust in the HKSAR Government
 - People's appraisals of society's conditions
- **People's Appraisal of Policy Areas of the Government**
 - Handling relation with the Central Government
 - Protecting human rights and freedom
 - Maintaining economic prosperity
 - Pace of democratic development
 - Improving people's livelihood
- Public Sentiment Index

Survey Result - People's Appraisal of Policy Areas of the Government

15

• Net satisfaction rate

	23-26/11/2020	19-22/4/2021	Change	Record
Handling relation with the Central Government	-16%	-13%	▲3%	Record high since Dec. 2018
Protecting human rights	-21%	-25%	▼4%	Record low since Apr. 2020
Maintaining economic prosperity	-37%	-37%	--	--
Pace of democratic development	-39%	-38%	▲1%	Record high since Dec. 2018
Improving people's livelihood	-41%	-46%	▼6%	Record low since Oct. 2019

- The latest net satisfaction rates of all five specific policy areas of the HKSAR Government are negative. The net satisfaction rates of the government's performance in handling its relation with the Central Government, protecting human rights and freedom, maintaining economic prosperity, its pace of democratic development and improving people's livelihood are negative 13, negative 25, negative 37, negative 38 and negative 46 percentage points respectively. All these figures have not changed much from half year ago.

Survey Topic

17

- Popularity of Chief Executive
- Popularity of HKSAR Government
 - People's satisfaction with the HKSAR Government
 - People's trust in the HKSAR Government
 - People's appraisals of society's conditions
- People's Appraisal of Policy Areas of the Government
 - Handling relation with the Central Government
 - Protecting human rights and freedom
 - Maintaining economic prosperity
 - Pace of democratic development
 - Improving people's livelihood
- **Public Sentiment Index**

Survey Result - Public Sentiment Index

18

- **Public Sentiment Index (PSI)**

	9/4/2021	22/4/2021	Change	Record
Public Sentiment Index (PSI)	69.0	71.3	▲2.3	Record high since Feb. 2021
Government Appraisal (GA)	69.8	70.7	▲0.9	Record high since Mar. 2021
Society Appraisal (SA)	67.5	70.8	▲3.3	Record high since Jul. 2019

- All PSI, GA and SA scores range between 0 to 200, with 100 meaning normal.
- The latest PSI stands at 71.3, increased by 2.3 points from early April. It can be considered as among the worst 3% across the past 20 years or so. Two component scores of PSI also register increase and can be considered as among the worst 3% across the past 20 years or so.

POP



HONG KONG PUBLIC OPINION PROGRAM

HONG KONG PUBLIC OPINION RESEARCH INSTITUTE

香港民意研究所 之 香港民意研究計劃

限聚指數

Group Gathering Prohibition Index

27/4/2021

樣本資料 - 限聚指數基準調查

Contact Information - Group Gathering Prohibition Index Benchmark Survey

21

	香港民研意見群組成員 HKPOP Panel
調查日期 Survey date	16/4 15:00 – 21/4 15:00
調查方法 Survey method	以電郵接觸群組成員，並於網上完成調查 Online survey
訪問對象 Target population	十二歲或以上的香港市民 Hong Kong residents aged 12+
總成功樣本 Total sample size	6,330
回應比率 Response rate	6.7%
抽樣誤差 Sampling error	95% 置信水平，百分比誤差 $\pm 1\%$ Sampling error of percentages at $\pm 1\%$ at 95% confidence level
加權方法 Weighting method	按照1) 政府統計處提供的全港人口年齡及性別分佈統計數字、各區議會人口數字；2) 選舉事務處提供的區議會選舉結果；3) 常規調查中的特首評分分佈數字，以「反覆多重加權法」作出調整。 The figures are rim-weighted according to 1) gender-age distribution of Hong Kong population and by District Councils population figures from Census and Statistics Department; 2) Voting results of District Councils Election from Registration and Electoral Office; 3) rating distribution of Chief Executive from regular tracking surveys.

限聚指數

Group Gathering Prohibition Index

22

- 最新調查日期 **Latest survey date: 16-21/4/2021 (N=6,330)**
- 上次調查日期 **Last survey date: 22-29/3/2021 (N=6,806)**
- 上上次調查日期 **Second last survey date: 8-22/3/2021 (N=6,210)**

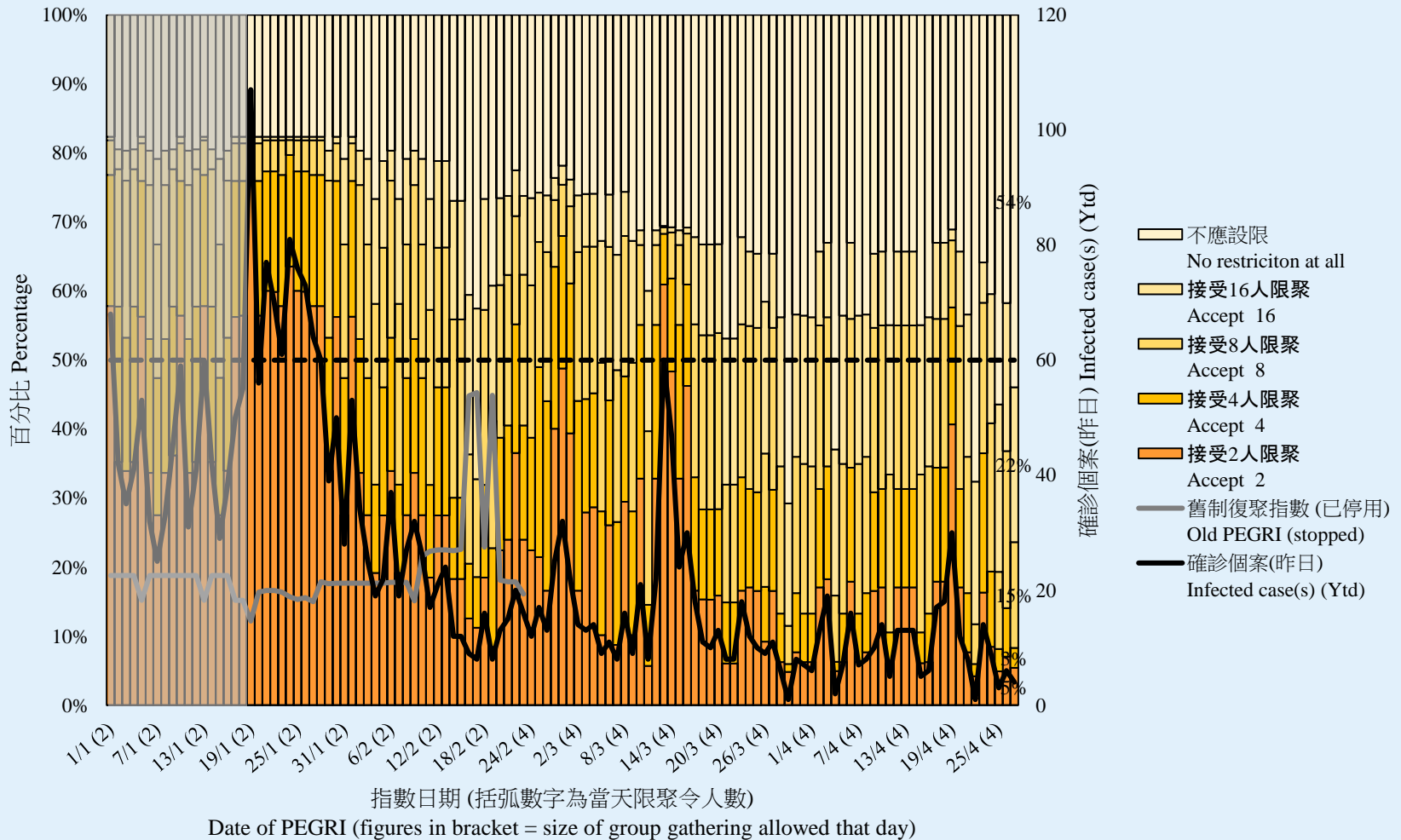
意見題目	Opinion Questions
<p>你認為香港應否無條件全面撤銷「限聚令」？</p> <ul style="list-style-type: none">▪ 應該無條件撤銷「限聚令」▪ 不應該，應視乎疫情而定▪ 不知道／很難說 <p>[追問沒有選擇應該“無條件撤銷「限聚令」”者] 你認為每天新增確診個案數應是多少，才適合將「限聚令」訂於2人？ 你認為每天新增確診個案數應是多少，才適合將「限聚令」訂於4人？ 你認為每天新增確診個案數應是多少，才適合將「限聚令」訂於8人？ 你認為每天新增確診個案數應是多少，才適合將「限聚令」訂於16人？</p> <p>請於以下欄位列舉你認為合適的 [個案數 及 限聚人數] 組合……</p>	<p>Do you think the regulation prohibiting gatherings of more than a specific number of people in public places should be completely lifted unconditionally in Hong Kong?</p> <ul style="list-style-type: none">▪ Yes, the ban should be lifted unconditionally▪ No, it should depend on the epidemic situation▪ Don't know / hard to say <p>[For respondents NOT answering “Yes, the ban should be lifted unconditionally”] How many newly confirmed cases each day should there be before it would be appropriate to prohibit gatherings of more than 2 people? How many newly confirmed cases each day should there be before it would be appropriate to prohibit gatherings of more than 4 people? How many newly confirmed cases each day should there be before it would be appropriate to prohibit gatherings of more than 8 people? How many newly confirmed cases each day should there be before it would be appropriate to prohibit gatherings of more than 16 people?</p> <p>Please list combinations of [number of cases & number of people allowed in gatherings] that you think is appropriate in the field below:</p>

調查結果 - 限聚接受程度

Survey Result – Group Gathering Prohibition Acceptance Level

23

限聚接受程度 Group Gathering Prohibition Acceptance Level

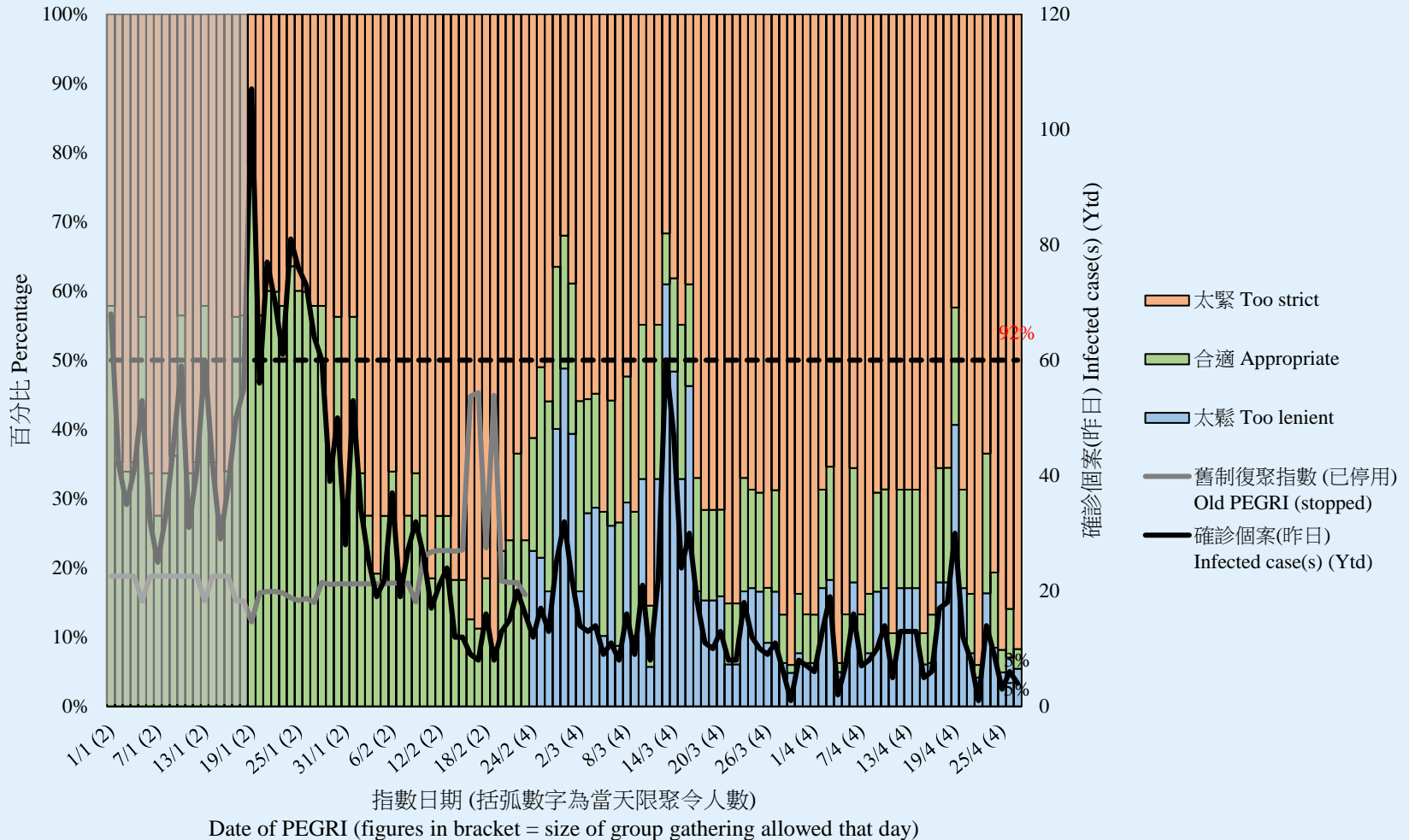


調查結果 - 限聚接受程度

Survey Result – Group Gathering Prohibition Acceptance Level

24

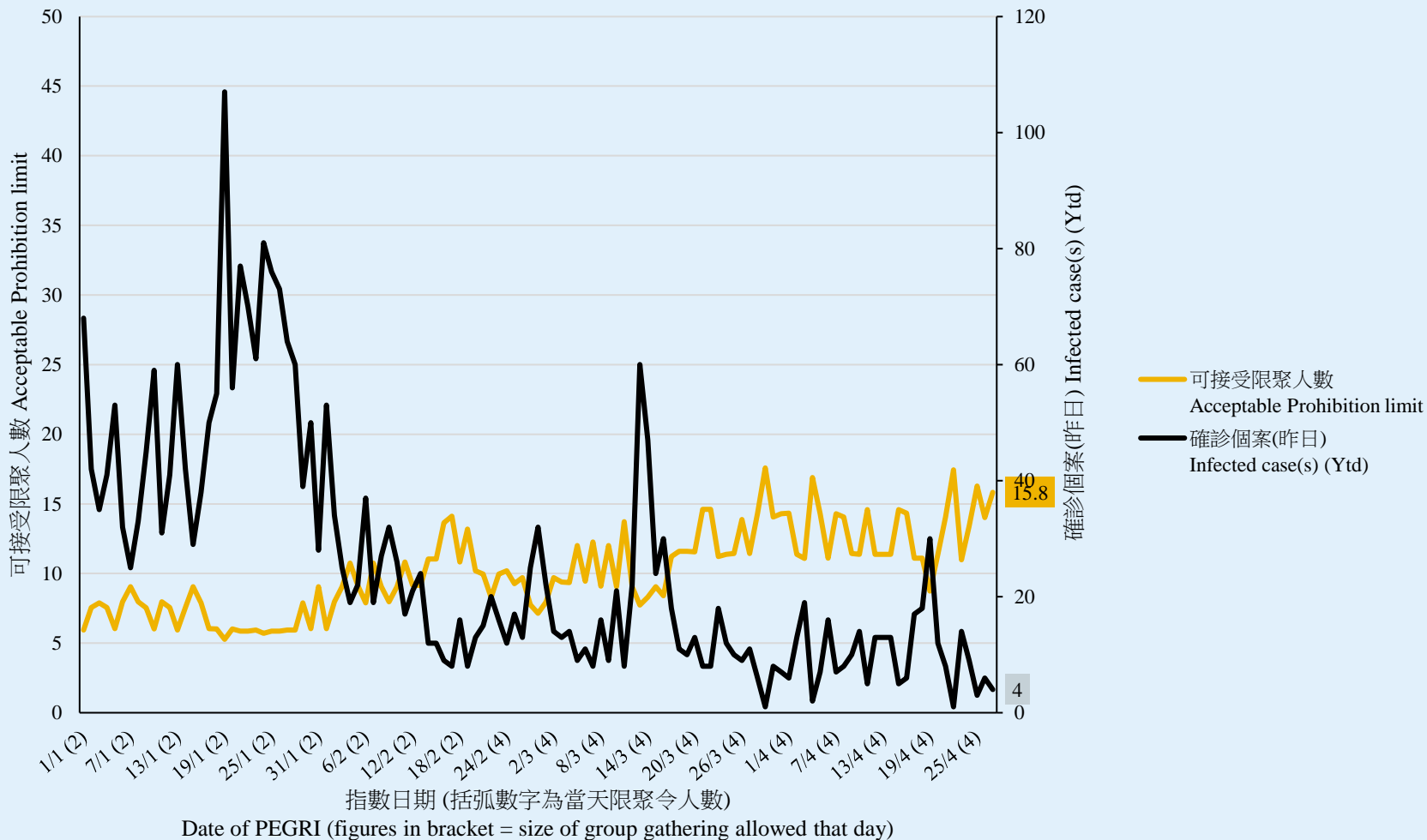
限聚接受程度 Group Gathering Prohibition Acceptance Level



調查結果 - 限聚指數

Survey Result - Group Gathering Prohibition Index

限聚指數 Group Gathering Prohibition Index



限聚指數 - 分析評論

Group Gathering Prohibition Index – Commentary

民生大聯盟發言人章彤輝博士指出，「認為限聚令太嚴的市民漸次迫近100%，希望政府不會視而不見，加上外來的變種病例在香港門外徘徊，一方面收緊外源性輸入的渠道，另一方面緩解本地限聚的尺度，應該是刻不容緩的措施！在這兩方面沒有確切修正之前，政府近日強調的旅遊氣泡只是遠水難救近火。」

Dr Tung-fai Cheung, Spokesman of Alliance of Revitalizing Economy and Livelihood, observed, “I hope the government will not ignore that 92% peoples disagreed with the current group gathering ban. The inbound transmitted path has to be blocked when the new double-mutated strain is knocking our door. On the other hand, people do expect a more relaxing gathering policy as the number of local cases drops. If the above jobs are not done, the travel bubbles proposed by the government will only be a belated remedy.”