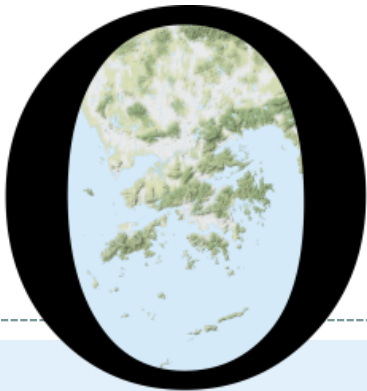


POP



HONG KONG PUBLIC OPINION PROGRAM

HONG KONG PUBLIC OPINION RESEARCH INSTITUTE

香港民意研究所 之 香港民意研究計劃

Latest Tracking Poll Results

March 23, 2021

Contact Information

2

- Date of survey: 8-12/3/2021
- Survey method: Random telephone survey conducted by real interviewers
- Target population: Cantonese-speaking Hong Kong residents aged 18+
- Sample size: 1,001 (including 496 landline and 505 mobile samples)
- Effective response rate: 47.6%
- Sampling error: Sampling error of ratings not more than +/-0.29 at 95% conf. level
- Weighting method: Rim-weighted according to figures provided by the Census and Statistics Department. The gender-age distribution of the Hong Kong population came from “Mid-year population for 2019”, while the educational attainment (highest level attended) distribution and economic activity status distribution came from “Women and Men in Hong Kong - Key Statistics (2019 Edition)”.

Survey Topic

3

- Core Social Indicators
 - Degree of freedom
 - Degree of stability
 - Degree of prosperity
 - Compliance with the rule of law
 - Degree of democracy

Survey result - Social Indicators

4

● Five Core Social Indicators

	2-5/2/2021	8-12/3/2021	Change	Record
Freedom	5.02	4.70	▼0.32	Record low since Jan. 2021
Stability	4.99	4.26	▼0.72 *	Record low since Jan. 2021
Prosperity	4.96	4.26	▼0.70 *	Record low since Jan. 2021
Rule of law	4.50	3.92	▼0.58 *	Record low since Jan. 2021
Democracy	4.27	3.59	▼0.67 *	Record low since Jan. 2021

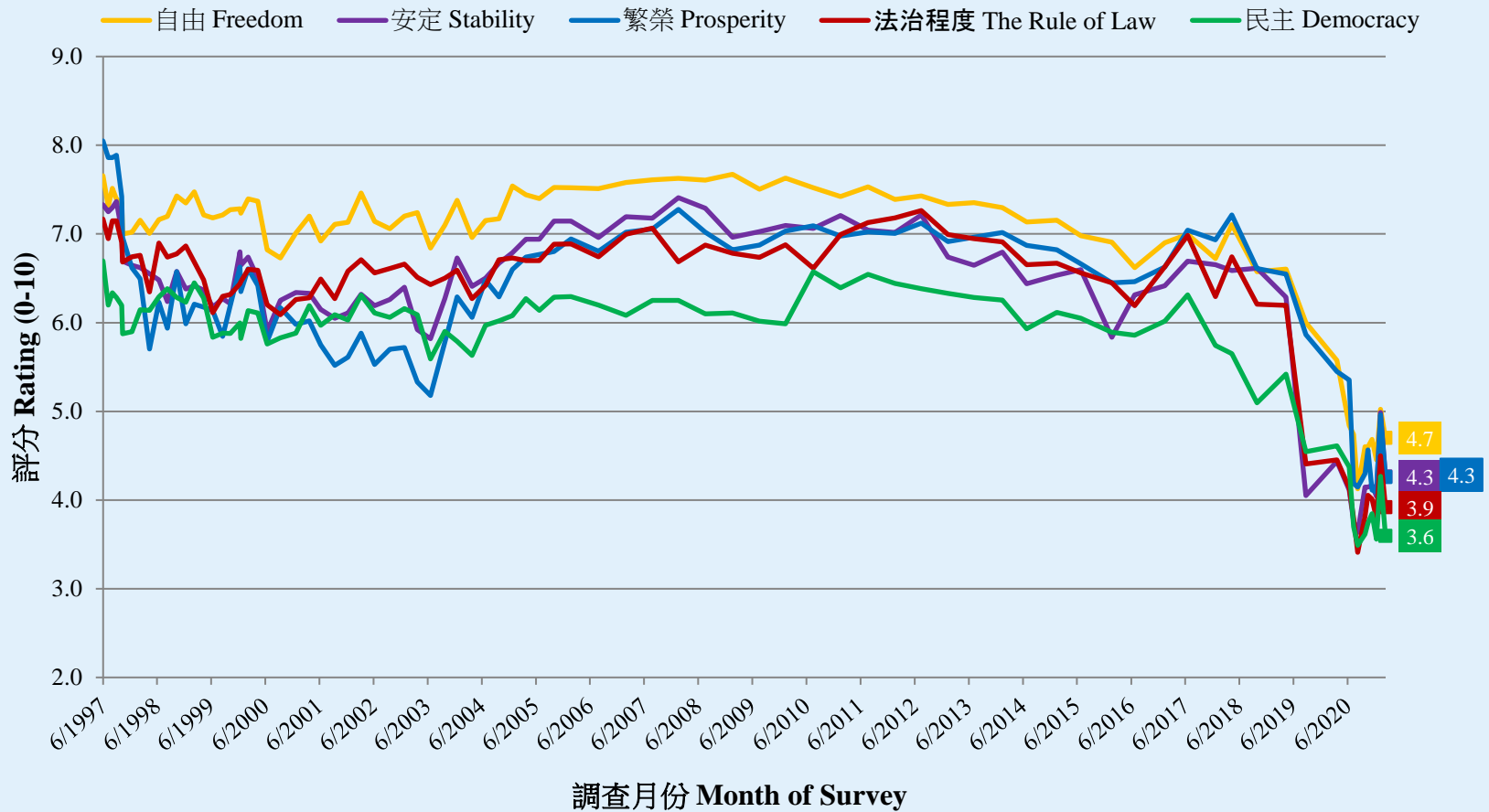
- On a scale of 0 to 10, people's ratings on the five core social indicators ranked from the highest to the lowest are "freedom", "stability", "prosperity", "rule of law" and "democracy". Their scores are 4.70, 4.26, 4.26, 3.92 and 3.59 respectively. Compared with a month ago, except "freedom" indicator, all other indicators have registered significant decrease, down by 0.58 to 0.72.

* Significant change

Survey result - Social Indicators

5

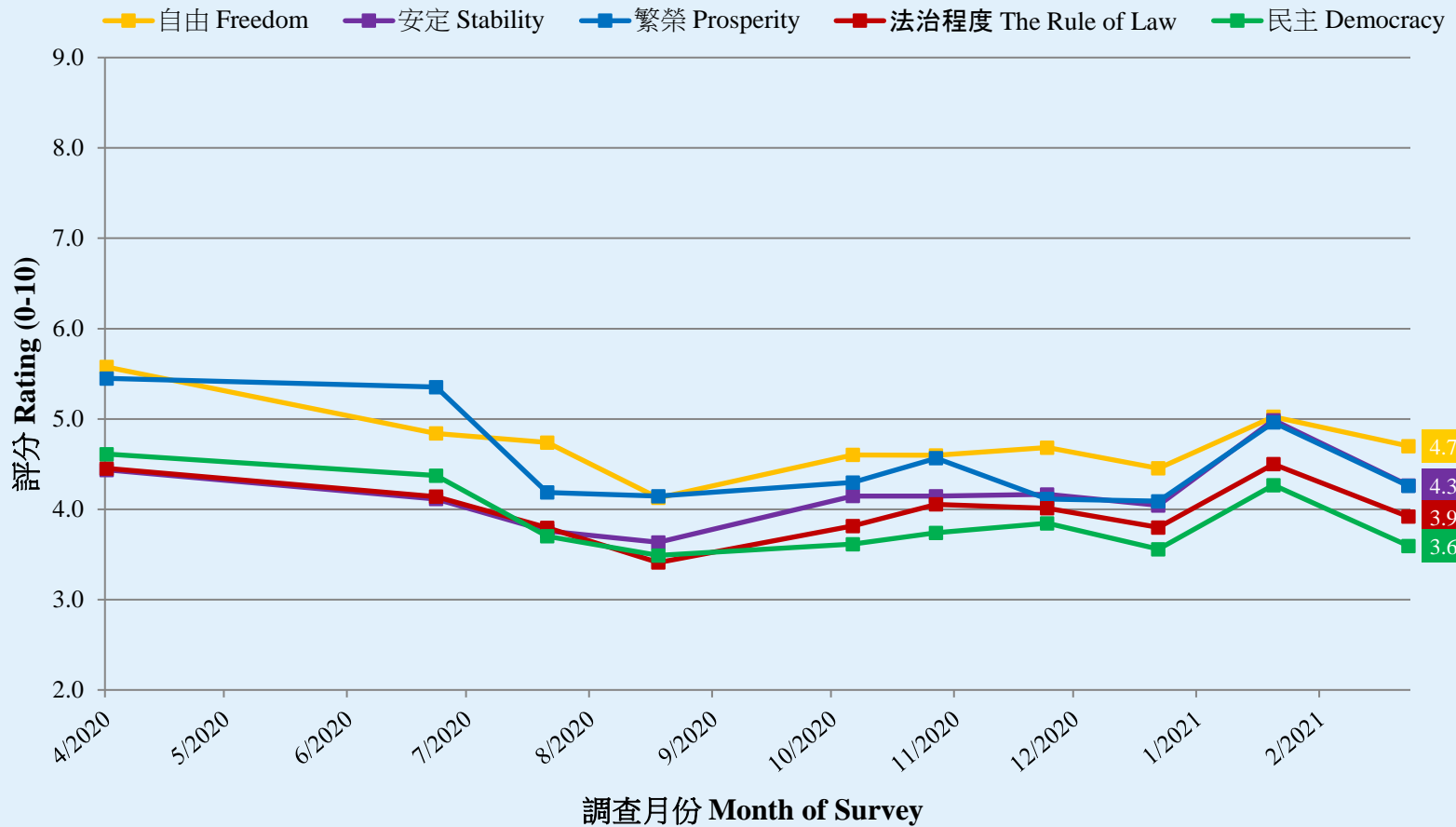
核心社會指標走勢圖表 (按次計算)
Trend of Core Social Indicators Chart (Per Poll)
(6/1997 – 3/2021)



Survey result - Social Indicators

6

核心社會指標走勢圖表 (按次計算)
Trend of Core Social Indicators Chart (Per Poll)
(4/2020 – 3/2021)



POP



HONG KONG PUBLIC OPINION PROGRAM

HONG KONG PUBLIC OPINION RESEARCH INSTITUTE

香港民意研究所 之 香港民意研究計劃

**Community Democracy Project -
Community Health Module &
Post-Epidemic Normality Resumption Index (PENRI)
Latest Results
March 23, 2021**

Contact Information - Community Health Module & PENRI

	HKPOP Panel		
Date of survey	March 8, 3pm – March 22, 3pm		
Survey method	Online survey		
Target population	Hong Kong residents aged 12+		
	Representative Panel	Volunteer Panel	Combine
Total sample size	678	5,532	6,210
Response rate	7.8%	6.4%	6.5%
Sampling error	Sampling error of percentages at +/-4% at 95% confidence level	Sampling error of percentages at +/-1% at 95% confidence level	Sampling error of percentages at +/-1% at 95% confidence level
Weighting method	The figures are rim-weighted according to 1) gender-age distribution of Hong Kong population and by District Councils population figures from Census and Statistics Department; 2) Voting results of District Councils Election from Registration and Electoral Office; 3) rating distribution of Chief Executive from regular tracking surveys.		

Survey Result - Community Health Module

10

- **Latest survey period: 8-22/3/2021**
- **Last survey period: 1-8/3/2021** (*Representative Panel N= 671 Volunteer Panel N= 4,925*)
- **Second last survey period: 22/2-1/3/2021** (*Representative Panel N= 667 Volunteer Panel N= 5,993*)

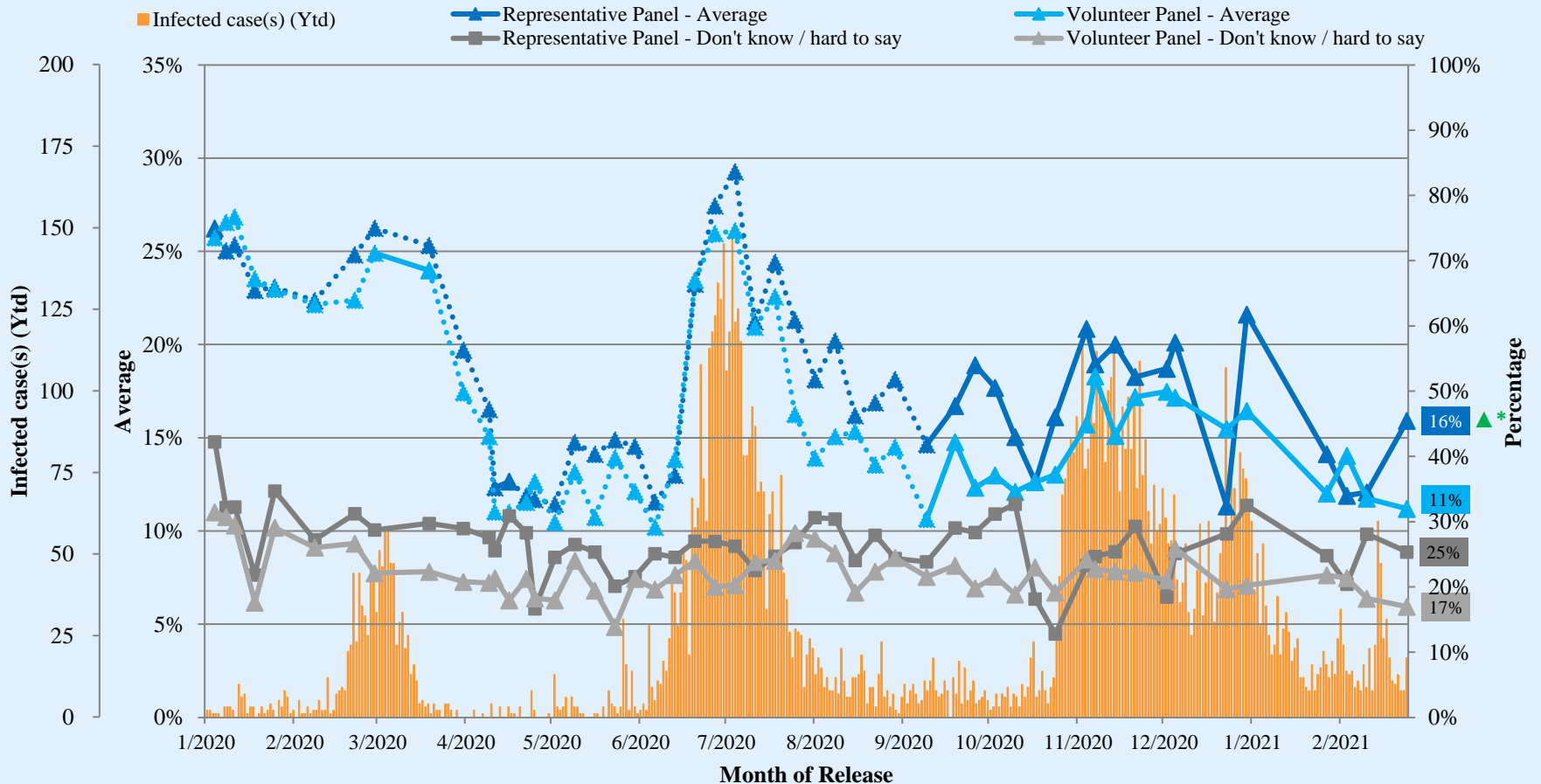
Opinion Question [^]		Representative Panel (N=677)		Volunteer Panel (N=5,521)	
		Don't know / hard to say	Average	Don't know / hard to say	Average
Q1 How likely do you think it is that you will contract novel coronavirus pneumonia over the next one month? [Logarithmic Scale]	Latest	25%	16% ▲*	17%	11%
	Last	28%	12%	18%	12%
	Second Last	20%	12%	21%	14%

[^] Answer options included: 0-10 rating scale, others and don't know / hard to say. Answer options changed from linear scale to logarithmic scale since Oct 2020.

* Significant change

Survey Result - Community Health Module

Assessment of the public's expected chance of COVID-19 infection



^ Answer options included: 0-10 rating scale, others and don't know / hard to say. Answer options changed from linear scale to logarithmic scale since Oct 2020.

* Significant change

Survey Result - Community Health Module

12

- Latest survey period: 8-22/3/2021
- Last survey period: 1-8/3/2021 (*Representative Panel N=671 Volunteer Panel N=4,928*)
- Second last survey period: 22/2-1/3/2021 (*Representative Panel N=667 Volunteer Panel N=6,003*)

Opinion Question [^]		Representative Panel (N=676)				Volunteer Panel (N=5,528)			
		Satisfied	Half-half	Dissatisfied	Mean [†]	Satisfied	Half-half	Dissatisfied	Mean [†]
Q2 How satisfied or dissatisfied are you with the government's performance in handling novel coronavirus pneumonia?	Latest	23%	19% ▼*	59%	2.2	19%	15%	65%	2.1
	Last	21%	24%	54%	2.3	20%	15%	65%	2.1
	Second Last	29%	10%	60%	2.3	16%	15%	68%	2.0

[^] Answer options included: very much satisfied, somewhat satisfied, half-half, somewhat dissatisfied, very much dissatisfied and don't know / hard to say

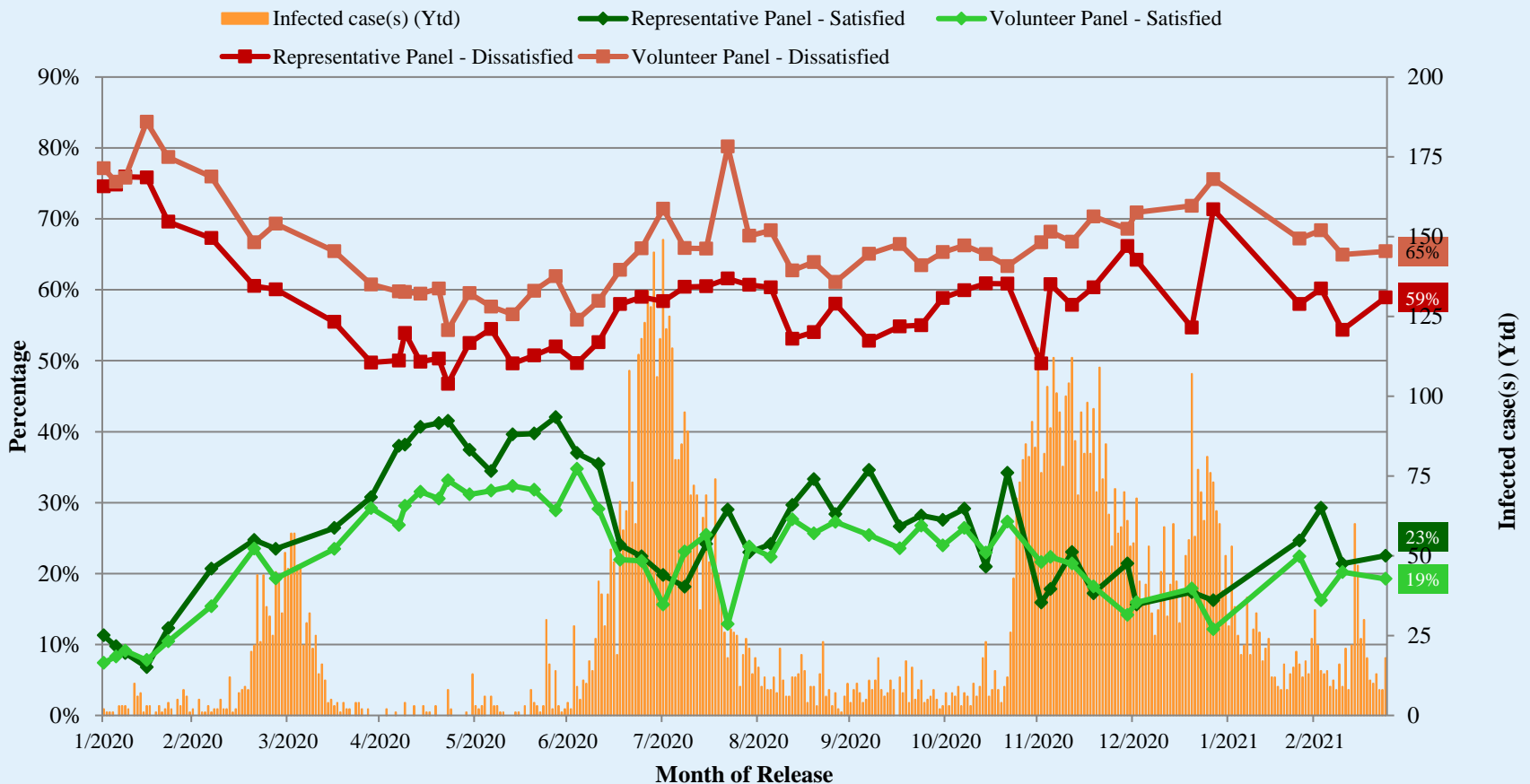
[†] The mean value is calculated by quantifying all individual responses into 1, 2, 3, 4, 5 marks according to their degree of positive level, where 1 is the lowest and 5 the highest, and then calculate the sample mean.

* Significant change

Survey Result - Community Health Module

13

Appraisal of HK Government's performance in handling novel coronavirus pneumonia

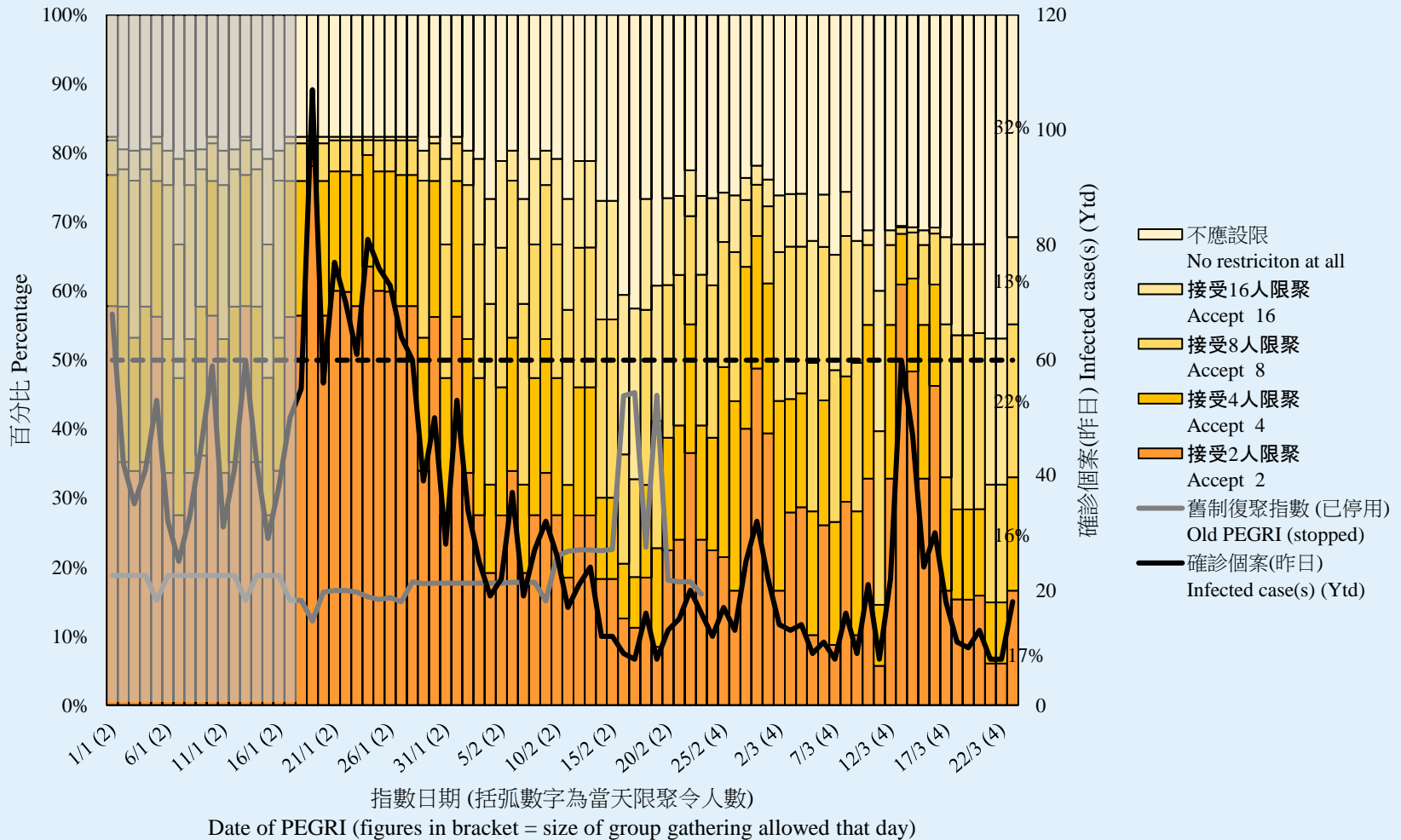


^ Answer options included: very much satisfied, somewhat satisfied, half-half, somewhat dissatisfied, very much dissatisfied and don't know / hard to say

Survey Result - PENRI

14

疫後復聚指數 Post-Epidemic Gathering Resumption Index (PEGRI)



Survey Result - PENRI

15

疫後復聚指數 Post-Epidemic Gathering Resumption Index (PEGRI)

