

POP



HONG KONG PUBLIC OPINION PROGRAM

HONG KONG PUBLIC OPINION RESEARCH INSTITUTE

香港民意研究所 之 香港民意研究計劃

Community Democracy Project -

Community Health Module

Latest Results

December 18, 2020

Contact Information - Community Health Module

2

	HKPOP Panel	
Date of survey	December 10, 3pm – December 17, 3pm	
Survey method	Online survey	
Target population	Hong Kong residents aged 12+	
	Representative Panel	Volunteer Panel
Total sample size	838	9,069
Response rate	9.9%	10.2%
Sampling error	Sampling error of percentages at +/-3% at 95% confidence level	Sampling error of percentages at +/-1% at 95% confidence level
Weighting method	The figures are rim-weighted according to 1) gender-age distribution of Hong Kong population and by District Councils population figures from Census and Statistics Department; 2) Voting results of District Councils Election from Registration and Electoral Office; 3) rating distribution of Chief Executive from regular tracking surveys.	

Survey Result - Community Health Module

3

- **Question: How likely do you think it is that you will contract novel coronavirus pneumonia over the next one month?**

Linear Scale	Logarithmic Scale
Certainly not	0% chance (Certainly not)
	0.001% chance (1 in 100,000)
	0.01% chance (1 in 10,000)
	0.1% chance (1 in 1,000)
	1% chance (1 in 100)
10% chance	5% chance (1 in 20)
	10% chance (1 in 10)
20% chance	15% chance
	20% chance
30% chance	25% chance
	30% chance
40% chance	35% chance
	40% chance
50% chance	45% chance
	50% chance
60% chance	60% chance
70% chance	70% chance
80% chance	80% chance
90% chance	90% chance
100% chance (Certainly will)	100% chance (Certainly will)

^ Answer options included: 0-10 rating scale, others and don't know / hard to say. Apart from the linear scale, this question with answer options on a logarithmic scale has been asked since Oct 2020.

Survey Result - Community Health Module

4

- **Latest survey period: 10-17/12/2020**
- **Question: How likely do you think it is that you will contract novel coronavirus pneumonia over the next one month?**

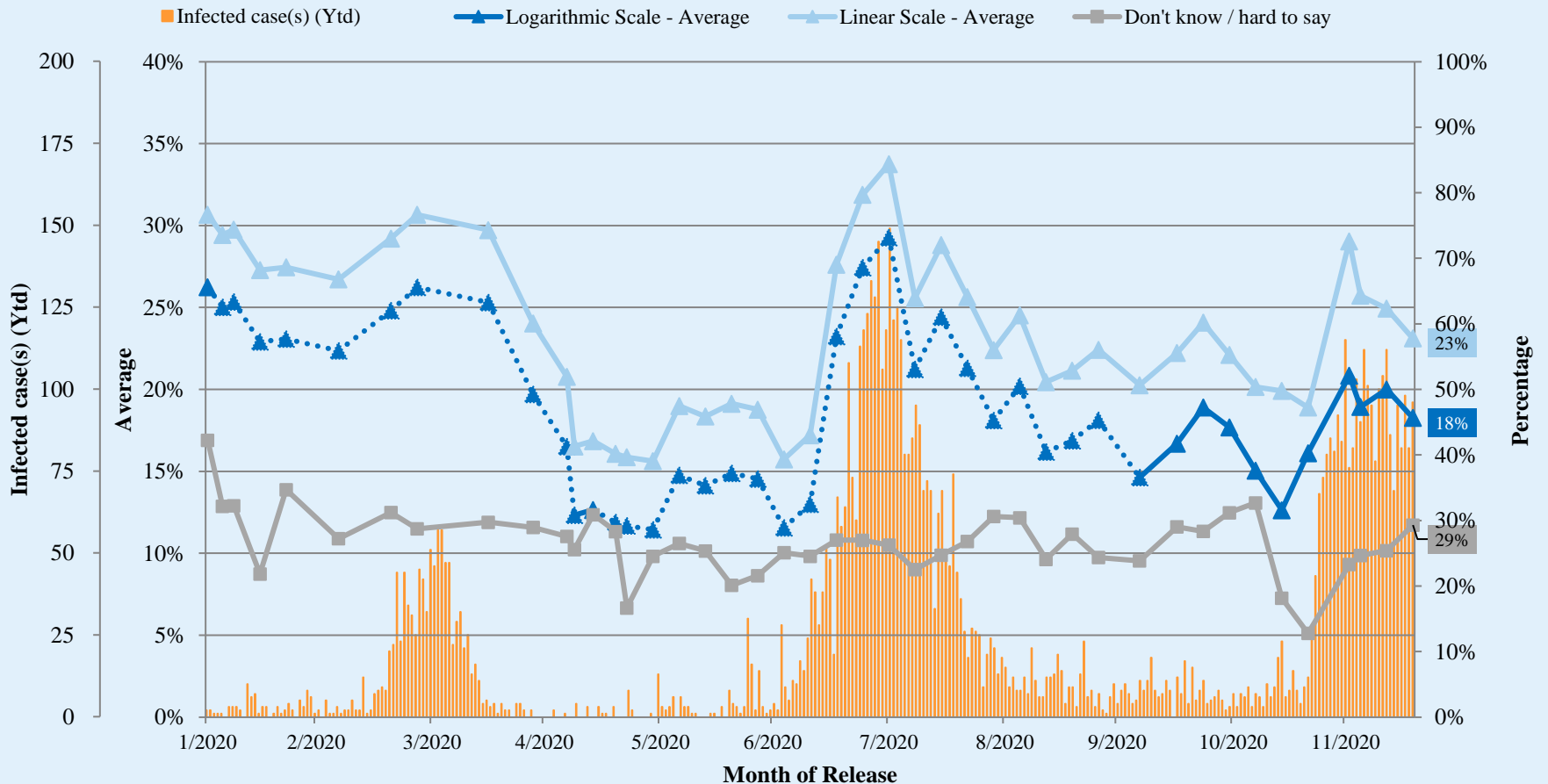
	Representative Panel		Volunteer Panel	
	Don't know / hard to say	Average	Don't know / hard to say	Average
Linear Scale	31%	23%	24%	22% ▲*
Logarithmic Scale	29%	18%	22%	17% ▲*

^ Answer options included: 0-10 rating scale, others and don't know / hard to say. Apart from the linear scale, this question with answer options on a logarithmic scale has been asked since Oct 2020.

* **Significant change**

Survey Result - Community Health Module

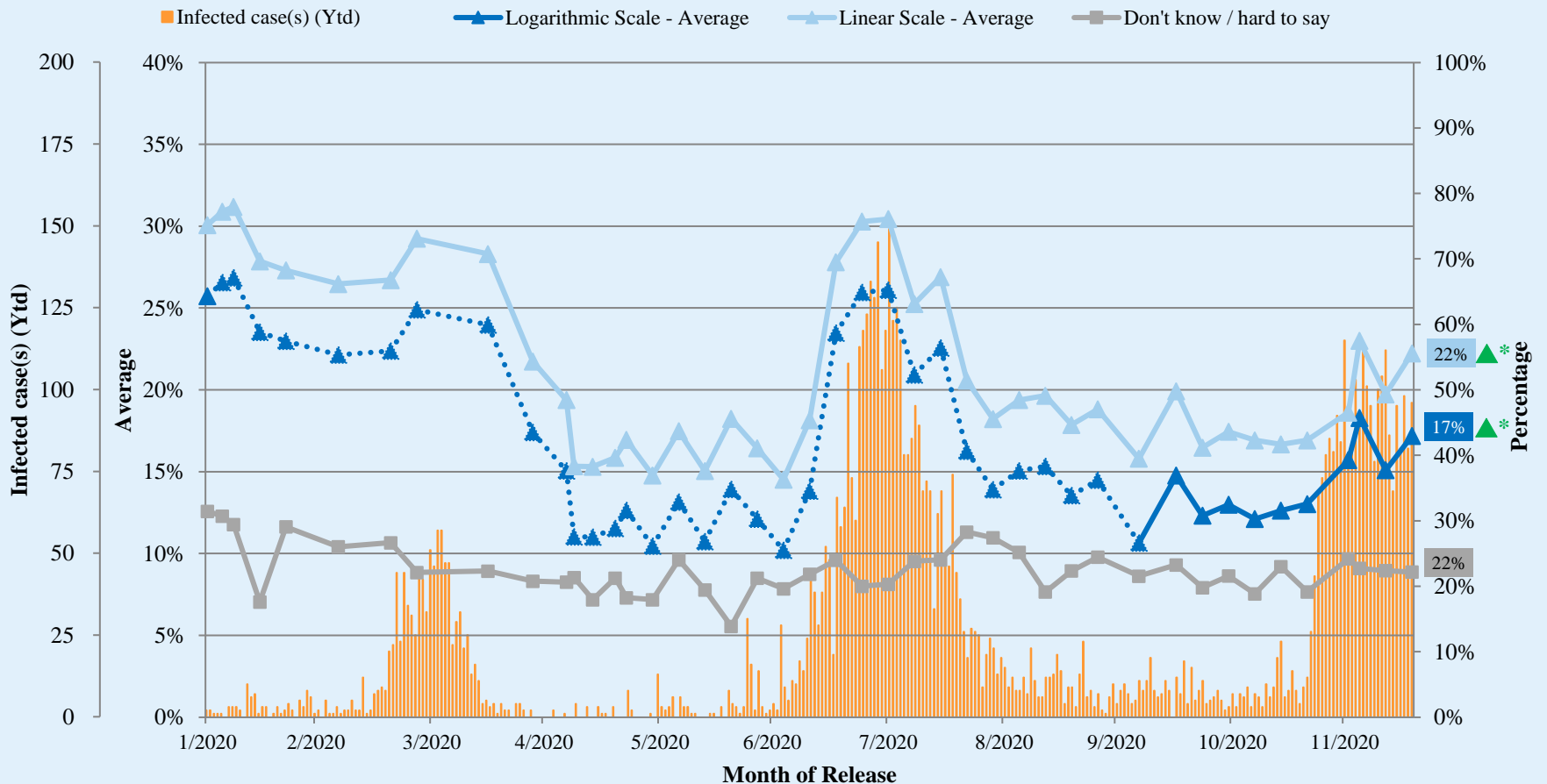
Assessment of the public's expected chance of COVID-19 infection (Representative Panel)



^ Answer options included: 0-10 rating scale, others and don't know / hard to say. Apart from the linear scale, this question with answer options on a logarithmic scale has been asked since Oct 2020.

Survey Result - Community Health Module

Assessment of the public's expected chance of COVID-19 infection (Volunteer Panel)



^ Answer options included: 0-10 rating scale, others and don't know / hard to say. Apart from the linear scale, this question with answer options on a logarithmic scale has been asked since Oct 2020.

* Significant change

Survey Result - Community Health Module

9

- Latest survey period: 10-17/12/2020
- Last survey period: 3-10/12/2020 (*Representative Panel N= 791 Volunteer Panel N= 8,054*)
- Second last survey period: 30/11-3/12/2020 (*Representative Panel N= 389 Volunteer Panel N= 4,129*)

Opinion Question [^]		Representative Panel (N=838)				Volunteer Panel (N=9,055)			
		Satisfied	Half-half	Dissatisfied	Mean [†]	Satisfied	Half-half	Dissatisfied	Mean [†]
Q2 How satisfied or dissatisfied are you with the government's performance in handling novel coronavirus pneumonia?	Latest	17% ▼*	22%	60%	2.1	18% ▼*	11%	70% ▲*	2.0 ▼*
	Last	23%	19%	58%	2.2	21%	12%	67%	2.1
	Second Last	18%	21%	61%	2.1	22%	9%	68%	2.0

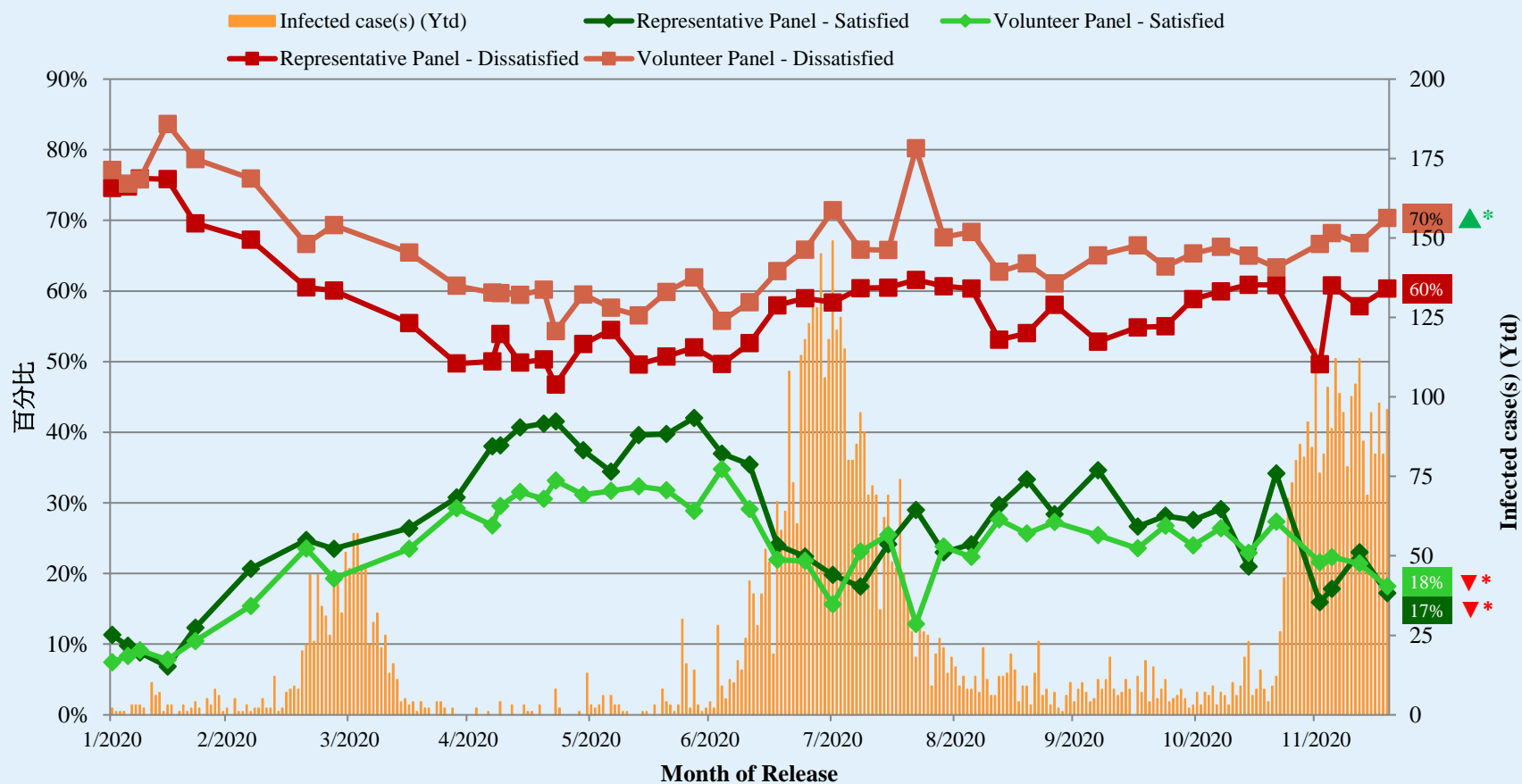
[^] Answer options included: very much satisfied, somewhat satisfied, half-half, somewhat dissatisfied, very much dissatisfied and don't know / hard to say

[†] The mean value is calculated by quantifying all individual responses into 1, 2, 3, 4, 5 marks according to their degree of positive level, where 1 is the lowest and 5 the highest, and then calculate the sample mean.

* Significant change

Survey Result - Community Health Module

Appraisal of HK Government's performance in handling novel coronavirus pneumonia



^ Answer options included: very much satisfied, somewhat satisfied, half-half, somewhat dissatisfied, very much dissatisfied and don't know / hard to say

* Significant change

POP



HONG KONG PUBLIC OPINION PROGRAM

HONG KONG PUBLIC OPINION RESEARCH INSTITUTE

香港民意研究所 之 香港民意研究計劃

Community Democracy Project - Community Health Module

Post-Epidemic Normality Resumption Index (PENRI)

Latest Results

December 18, 2020

Contact Information - PENRI

12

	HKPOP Panel
Date of survey	December 7, 3pm – December 17, 3pm
Survey method	Online survey
Target population	Hong Kong residents aged 12+
Total sample size	9,961
Response rate	10.2%
Sampling error	Sampling error of percentages at +/-1% at 95% confidence level
Weighting method	The figures are rim-weighted according to 1) gender-age distribution of Hong Kong population and by District Councils population figures from Census and Statistics Department; 2) Voting results of District Councils Election from Registration and Electoral Office; 3) rating distribution of Chief Executive from regular tracking surveys.

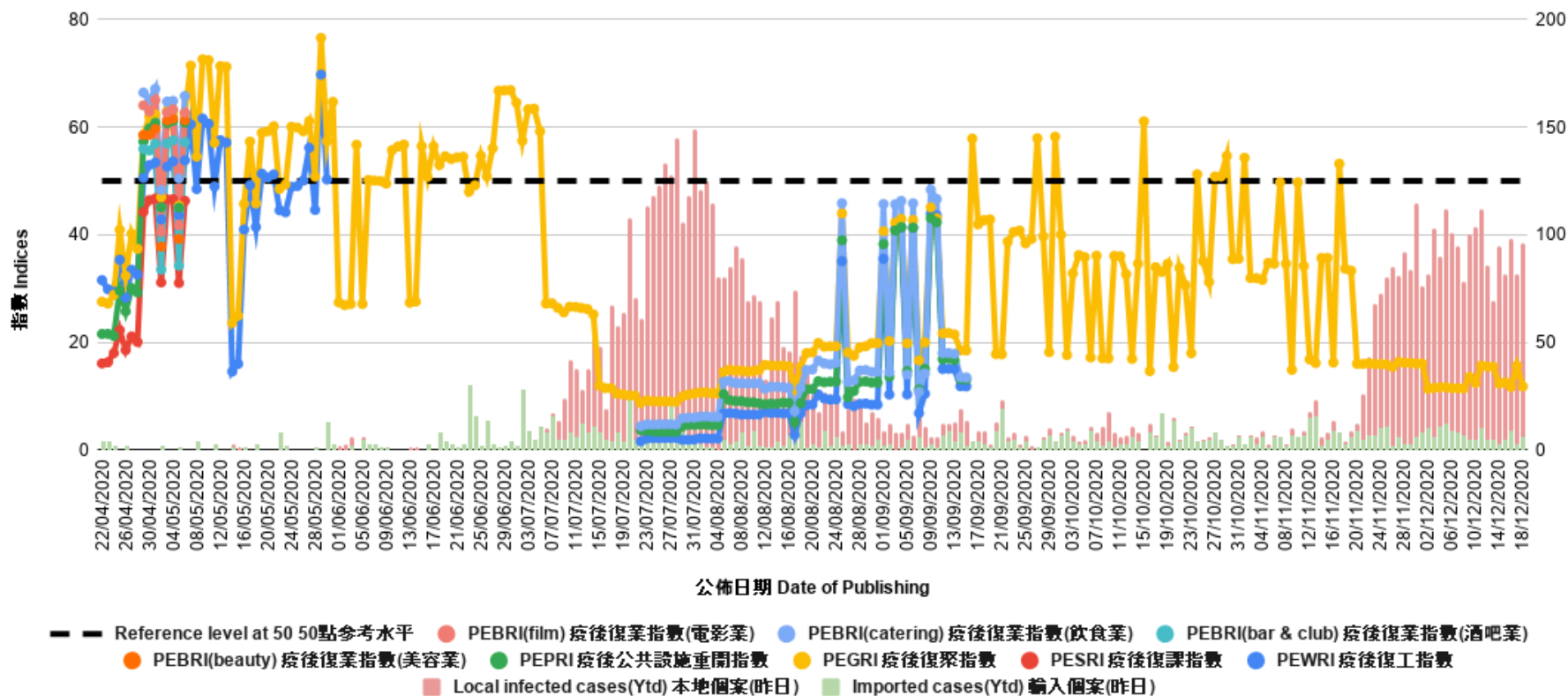
Survey Result - PENRI

13

Date of Publication	<u>4/12</u>	<u>5/12</u>	<u>6/12</u>	<u>7/12</u>	<u>8/12</u>	<u>9/12</u>	<u>10/12</u>	<u>11/12</u>	<u>12/12</u>	<u>13/12</u>	<u>14/12</u>	<u>15/12</u>	<u>16/12</u>	<u>17/12</u>	<u>18/12</u>
Imported Cases(Ytd)	11	12	9	8	7	5	5	10	5	5	3	5	9	3	6
Local Infection Cases(Ytd)	79	100	92	87	71	95	99	102	81	64	92	77	89	76	90
Post-Epidemic Gathering Resumption Index (PEGRI)	11.7	11.7	11.5	11.5	11.5	13.6	12.5	15.7	15.5	15.5	12.4	12.6	11.8	15.7	11.8

Survey Result - PENRI

14



POP



HONG KONG PUBLIC OPINION PROGRAM

HONG KONG PUBLIC OPINION RESEARCH INSTITUTE

香港民意研究所 之 香港民意研究計劃

“We Hongkongers” Panel Survey

Latest Results

December 18, 2020

Contact Information - “We Hongkongers” Panel Survey

17

	HKPOP Panel
Date of survey	December 14, 3pm – December 17, 3pm
Survey method	Online survey
Target population	Hong Kong residents aged 12+
Total sample size	9,536
Response rate	9.8%
Sampling error	Sampling error of percentages at +/-1% at 95% confidence level
Weighting method	The figures are rim-weighted according to 1) gender-age distribution, educational attainment (highest level attended) distribution, economic activity status distribution of Hong Kong population and by District Councils population figures from Census and Statistics Department; 2) Voting results of District Councils Election from Registration and Electoral Office; 3) rating distribution of Chief Executive from regular tracking surveys.

Survey Result - “We Hongkongers” Panel Survey

- Latest survey period: 14-17/12/2020
- Question: Recently several people charged with violating the national security law have been denied bail. How reasonable or unreasonable do you think such decisions are?

	Pro-democracy camp supporters (n=8,199)	Non-pro-democracy camp supporters* (n=799)	Combined^ (n=8,998)
Very reasonable	1%	42%	24%
Somewhat reasonable	<1%	14%	8%
Half-half	5%	10%	8%
Somewhat unreasonable	4%	7%	6%
Very unreasonable	89%	26%	53%
Don't know / Hard to say	1%	1%	1%
Mean†	1.2	3.4	2.4

* Include: pro-establishment camp supporters, centrist supporters, no political inclination / politically neutral / do not belong to any camp

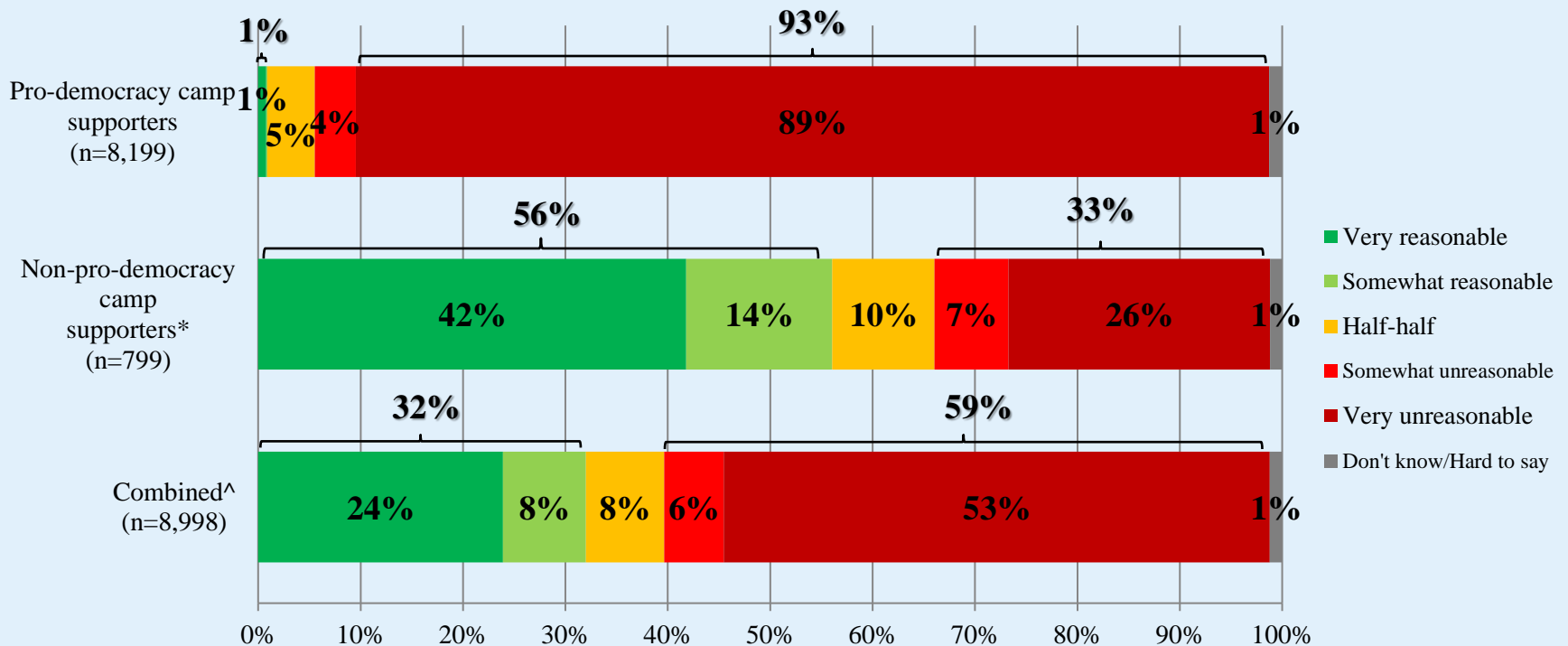
^ The aggregated figures come from adjusting the by-group weighted figures using ratio of “pan-democratic” vs “non-pan-democratic” collected in regular tracking survey.

† The mean value is calculated by quantifying all individual responses into 1, 2, 3, 4, 5 marks according to their degree of positive level, where 1 is the lowest and 5 the highest, and then calculate the sample mean.

Survey Result - “We Hongkongers” Panel Survey

19

- Latest survey period: 14-17/12/2020
- Question: Recently several people charged with violating the national security law have been denied bail. How reasonable or unreasonable do you think such decisions are?



* Include: pro-establishment camp supporters, centrist supporters, no political inclination / politically neutral / do not belong to any camp

^ The aggregated figures come from adjusting the by-group weighted figures using ratio of “pan-democratic” vs “non-pan-democratic” collected in regular tracking survey.

Research Background - “We Hongkongers” Panel Survey

20

- Advocated by HKPORI, with reference to the petition website “We the People” hosted by the White House of the United States
- The rolling survey series under the “We Hongkongers” Project was carried out in 2019, a total of 12 reports were published from October to December.
- In mid-May 2020, “We Hongkongers Panel Survey” is launched and survey data are collected from HKPOP Panel samples, including Hong Kong People Representative Panel (Probability-based Panel) and Hong Kong People Volunteer Panel (Non-probability-based Panel) in the form of online questionnaire
- HKPOP sent out emails to all panel members at the beginning of the survey, inviting them to fill in the questionnaire at the designated online platform. Members were allowed to make repeated submissions, while only the last submission of each individual member would be used for analysis.
- HKPOP adopts a rim-weighting method involving seven variables, namely, gender, age, educational attainment, economic activity status, district, voting record and rating of Chief Executive
- Survey results are presented by political camp such as “Pro-democracy camp supporters” and “Non-pro-democracy camp supporters”, and then adjusted the by-group weighted figures using ratio of “pan-democratic” vs “non-pan-democratic” collected in regular tracking survey to give the aggregated figures
- HKPOP also regularly compares the panel survey results with telephone survey results.

Opinion Question - “We Hongkongers” Panel Survey

21

- All questions for panel survey are shown as follows:
 - The National People’s Congress will deliberate on a draft decision to establish the legal system and enforcement mechanisms to safeguard **national security in Hong Kong**, delegating to its Standing Committee to start the lawmaking process. How much do you support or oppose the draft decision? (Survey period: 25-28/5/2020)
 - If the National People’s Congress decides to establish the legal system and enforcement mechanisms to safeguard **national security in Hong Kong**, how positive or negative do you think will be its impact on the stability of the Hong Kong society? (Survey period: 25-28/5/2020)
 - Do you think the Hong Kong SAR Government should or should not **substantially reorganize the police force**? (Survey period: 1-4/6/2020)
 - Opinion surveys find that most people are not confident in **one country, two systems**. If this is real, who do you think should largely be responsible? (Survey period: 8-11/6/2020)
 - There is a view saying Hong Kong has **changed from “One Country, Two Systems” to “One Country, One System”**. How much do you support or oppose this view? (Survey period: 16-18/6/2020)
 - How much do you support or oppose the immediate family members of the Chief Executive, Secretaries of Departments and Directors of Bureaux, meaning their spouses and children, to **renounce their foreign nationalities** in order to pledge political loyalty to the Central Government? (Survey period: 22-24/6/2020)
 - If the Central Government formally implements the **Hong Kong National Security Law**, how much do you support or oppose the U.S. Government to revoke **Hong Kong’s preferential treatment** from that given to Mainland China according to the “United States-Hong Kong Policy Act”, including a separate customs territory, bilateral economic and trade relations, free currency conversion, visa entitlements, etc.? (Survey period: 29/6-2/7/2020)

Opinion Question - “We Hongkongers” Panel Survey

22

- Judging from the current situation, how much do you support or oppose the saying that **Hong Kong is a free city**? (Survey period: 6-9/7/2020)
- Regardless of the party or camp you will support in the Legislative Council Election in September, will you make reference to the results of the **democrats’ primary election** when deciding whom to vote for? (Survey period: 13-16/7/2020)
- There is a view saying the major cause of the recent pandemic outbreak is the **failure of the government’s immigration quarantine policy**. How much do you support or oppose this view? (Survey period: 20-23/7/2020)
- Judging from the development of the pandemic, would you think the **Legislative Council Election** scheduled on September 6 should proceed as planned, or should be postponed? (Survey period: 27-30/7/2020)
- For the **Legislative Council election** originally scheduled for September 6, a number of returning officers have **disqualified twelve candidates** in total, for reasons that they do not genuinely uphold the Basic Law and swear allegiance to Hong Kong Special Administrative Region. How much do you in general support or oppose these decisions made by the returning officers? (Survey period: 3-6/8/2020)
- According to current legislation, eligible voters must have “ordinary residence in Hong Kong”. How much do you support or oppose amending the legislation to **allow Hong Kong permanent residents without ordinary residence the right to vote**? (Survey period: 10-13/8/2020)

Opinion Question - “We Hongkongers” Panel Survey

23

- The NPCSC has decided that the current Legislative Council shall continue to discharge duties for no less than one year. How much do you support or oppose **all members of the Legislative Council in continuing to serve?** (Survey period: 17-20/8/2020)
- Recently some suggested to implement a “**Hong Kong Health Code**” system, allowing only people with negative test results for novel coronavirus pneumonia to enter restaurants, shopping malls or public areas. How much do you support or oppose this suggestion? (Survey period: 17-20/8/2020)
- Which of the following ways should LegCo members of the democratic camp handle the **controversy of staying or leaving LegCo?** (Survey period: 24-27/8/2020)
- Judging from the pandemic situation in Hong Kong, do you think the Legislative Council election originally scheduled on 6 September this year **should be held as soon as possible?** (Survey period: 31/8-3/9/2020)
- Recently there was a saying that there had never been “**separation of powers**” in Hong Kong, and that there is only an executive-led system in which the executive, legislature and judiciary perform their own duties and provide checks and balances without “separation”. How much do you support or oppose this saying, that there had never been “separation of powers” in Hong Kong? (Survey period: 7-10/9/2020)
- There is a view that Hong Kong government should request the Guangdong government to extradite the **12 Hong Kong people** intercepted by the Guangdong coast guard back to Hong Kong as soon as possible, so that their cases can be followed up in Hong Kong. How much do you support or oppose this view? (Survey period: 14-17/9/2020)

Opinion Question - “We Hongkongers” Panel Survey

24

- There is a view that the government should suspend the “**Lantau Tomorrow Vision Project**” which would cost at least \$600 billion. How much do you support or oppose this view? (Survey period: 21-24/9/2020)
- The police have recently amended the definition of “**media representatives**”, recognizing only media agencies registered under the Government News and Media Information System (GNMIS), and internationally recognized and reputable non-local media. Membership cards of the Hong Kong Journalists Association and the Hong Kong Press Photographers Association are no longer recognized, as are most student media and recently established online media. How much do you support or oppose this move? (Survey period: 30/9-5/10/2020)
- There is a saying in society that the Hong Kong Police Force knew about the departure plans of the **12 Hong Kong people** before they were intercepted by the China Coast Guard. How much do you believe or disbelieve in such a saying? (Survey period: 12-15/10/2020)
- There is a saying in society that it was out of political reasons that the Education Bureau overturned the school-based investigation of the School Management Committee of Alliance Primary School in Kowloon Tong and proceeded to **deregister a teacher**. How much do you believe or disbelieve in such a saying? (Survey period: 19-22/10/2020)
- There is a saying in society that it was out of political reasons that the **Hospital Authority followed up on the strike in early February**. How much do you believe or disbelieve in such a saying? (Survey period: 23-29/10/2020)

Opinion Question - “We Hongkongers” Panel Survey

25

- **The University of Hong Kong recently appointed two scholars from Tsinghua University, Max Shen and Peng Gong, as Vice-Presidents.** How much do you consider the appointment comply with or not comply with the principle of “fair and just”? (Survey period: 2-5/11/2020)
- There is a saying in society that the Hong Kong Police has **arrested RTHK producer Choy Yuk Ling** out of political motives. How much do you believe or disbelieve in such a saying? (Survey period: 9-12/11/2020)
- There is a saying the recent arrest of a journalist for **conducting vehicle registration searches would suppress press freedom.** How much do you support or oppose this saying? (Survey period: 16-19/11/2020)
- The Education Bureau **deregistered a teacher** from Ho Lap Primary School for having made serious mistakes in his teaching. How much do you support or oppose this decision? (Survey period: 24-30/11/2020)
- There is a saying the Hong Kong Judiciary should conform to the principle of “**patriots ruling Hong Kong**”. How much do you support or oppose this saying? (Survey period: 30/11-3/12/2020)
- There is a suggestion that the government should make it mandatory for the public to use the “**Leave Home Safe**” mobile app before entering designated premises, in order to keep records of their whereabouts so as to minimise the risk of virus transmission. How much do you support or oppose this suggestion? (Survey period: 7-10/12/2020)
- Recently several people charged with violating the **national security law** have been denied bail. How reasonable or unreasonable do you think such decisions are? (Survey period: 14-17/12/2020)