

# POP



---

HONG KONG PUBLIC OPINION PROGRAM

HONG KONG PUBLIC OPINION RESEARCH INSTITUTE

香港民意研究所 之 香港民意研究計劃

---

**Community Democracy Project -**

**Community Health Module**

**Latest Results**

**November 13, 2020**

# Contact Information - Community Health Module

2

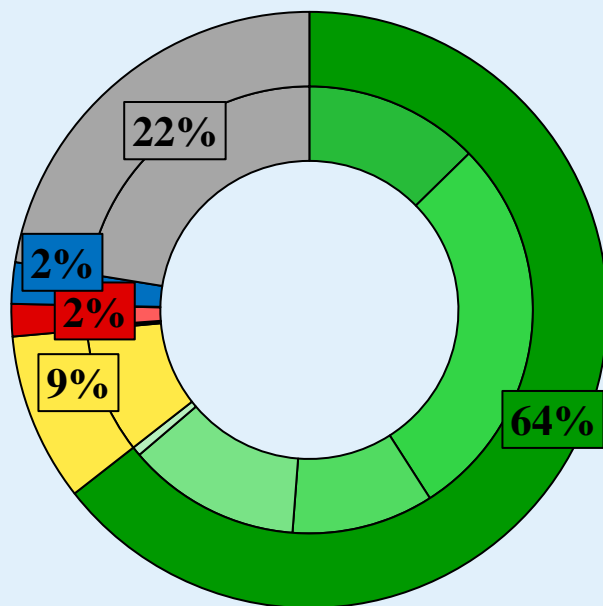
	<b>HKPOP Panel</b>	
Date of survey	November 5, 3pm – November 12, 3pm	
Survey method	Online survey	
Target population	Hong Kong residents aged 12+	
	Representative Panel	Volunteer Panel
Total sample size <sup>#</sup>	421	4,729
Response rate	9.7%	10.5%
Sampling error	Sampling error of percentages at +/-5% at 95% confidence level	Sampling error of percentages at +/-1% at 95% confidence level
Weighting method	The figures are rim-weighted according to 1) gender-age distribution of Hong Kong population and by District Councils population figures from Census and Statistics Department; 2) Voting results of District Councils Election from Registration and Electoral Office; 3) rating distribution of Chief Executive from regular tracking surveys.	

# In order to avoid response fatigue, email invitations are only sent to around half of the panel members under systematic sampling since Nov 2.

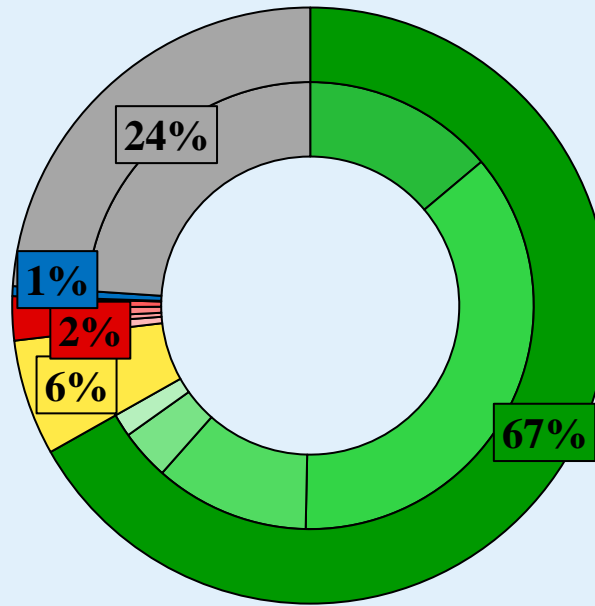
# Survey Result - Community Health Module

3

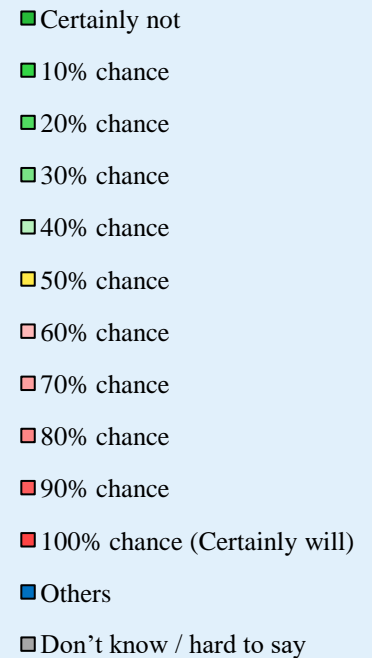
- Latest survey period: 5-12/11/2020
- Question: How likely do you think it is that you will contract novel coronavirus pneumonia over the next one month?



Representative Panel



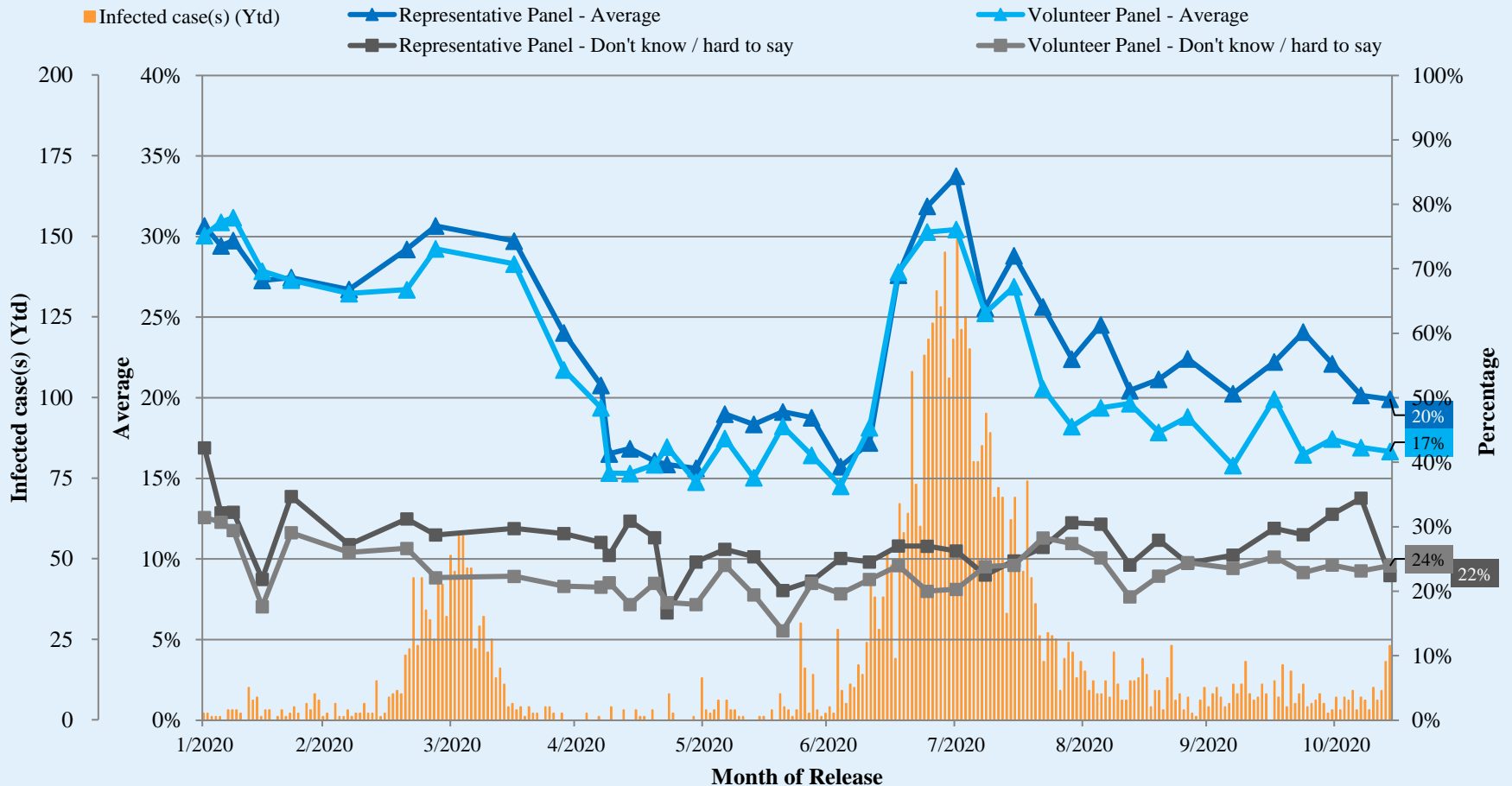
Volunteer Panel



^ Answer options included: 0-10 rating scale, others and don't know / hard to say.

# Survey Result - Community Health Module

## Assessment of the public's expected chance of COVID-19 infection



^ Answer options included: 0-10 rating scale, others and don't know / hard to say.

# Survey Result - Community Health Module

5

- Latest survey period: 5-12/11/2020
- Last survey period: 29/10-5/11/2020 (*Representative Panel N=482 Volunteer Panel N=5,661*)
- Second last survey period: 22-29/10/2020 (*Representative Panel N=815 Volunteer Panel N=9,552*)

Opinion Question <sup>^</sup>		Representative Panel (N=421)				Volunteer Panel (N=4,729)			
		Satisfied	Half-half	Dissatisfied	Mean <sup>†</sup>	Satisfied	Half-half	Dissatisfied	Mean <sup>†</sup>
Q2 How satisfied or dissatisfied are you with the government's performance in handling novel coronavirus pneumonia?	Latest	21% ▼*	17% ▲*	<b>61%</b>	2.2	23% ▼*	12% ▲*	<b>65%</b>	2.1
	Last	29%	10%	<b>60%</b>	2.2	26%	7%	<b>66%</b>	2.1
	Second Last	28%	14%	<b>59%</b>	2.3	24%	11%	<b>65%</b>	2.1

<sup>^</sup> Answer options included: very much satisfied, somewhat satisfied, half-half, somewhat dissatisfied, very much dissatisfied and don't know / hard to say

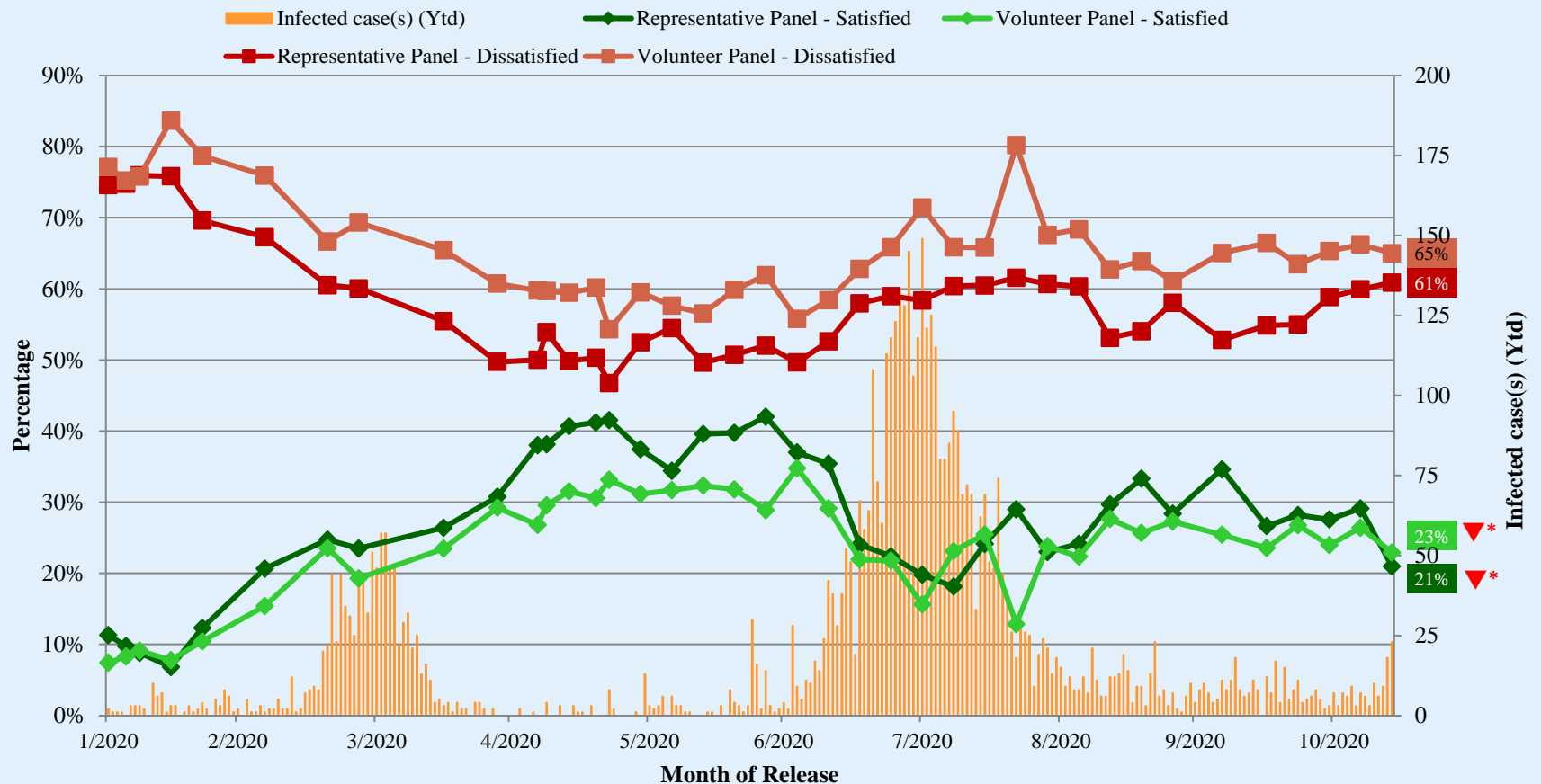
<sup>†</sup> The mean value is calculated by quantifying all individual responses into 1, 2, 3, 4, 5 marks according to their degree of positive level, where 1 is the lowest and 5 the highest, and then calculate the sample mean.

\* Significant change

# Survey Result - Community Health Module

6

## Appraisal of HK Government's performance in handling novel coronavirus pneumonia



^ Answer options included: very much satisfied, somewhat satisfied, half-half, somewhat dissatisfied, very much dissatisfied and don't know / hard to say.

\* Significant change

# POP



---

HONG KONG PUBLIC OPINION PROGRAM

HONG KONG PUBLIC OPINION RESEARCH INSTITUTE

香港民意研究所 之 香港民意研究計劃

---

**Community Democracy Project - Community Health Module**

**Post-Epidemic Normality Resumption Index (PENRI)**

**Latest Results**

**November 13, 2020**

# Contact Information - PENRI

8

	<b>HKPOP Panel</b>
Date of survey	October 24, 3pm – November 12, 3pm
Survey method	Online survey
Target population	Hong Kong residents aged 12+
Total sample size <sup>#</sup>	11,204
Response rate	10.6%
Sampling error	Sampling error of percentages at +/-1% at 95% confidence level
Weighting method	The figures are rim-weighted according to 1) gender-age distribution of Hong Kong population and by District Councils population figures from Census and Statistics Department; 2) Voting results of District Councils Election from Registration and Electoral Office; 3) rating distribution of Chief Executive from regular tracking surveys.

<sup>#</sup> In order to avoid response fatigue, email invitations are only sent to around half of the panel members under systematic sampling since Nov 2.



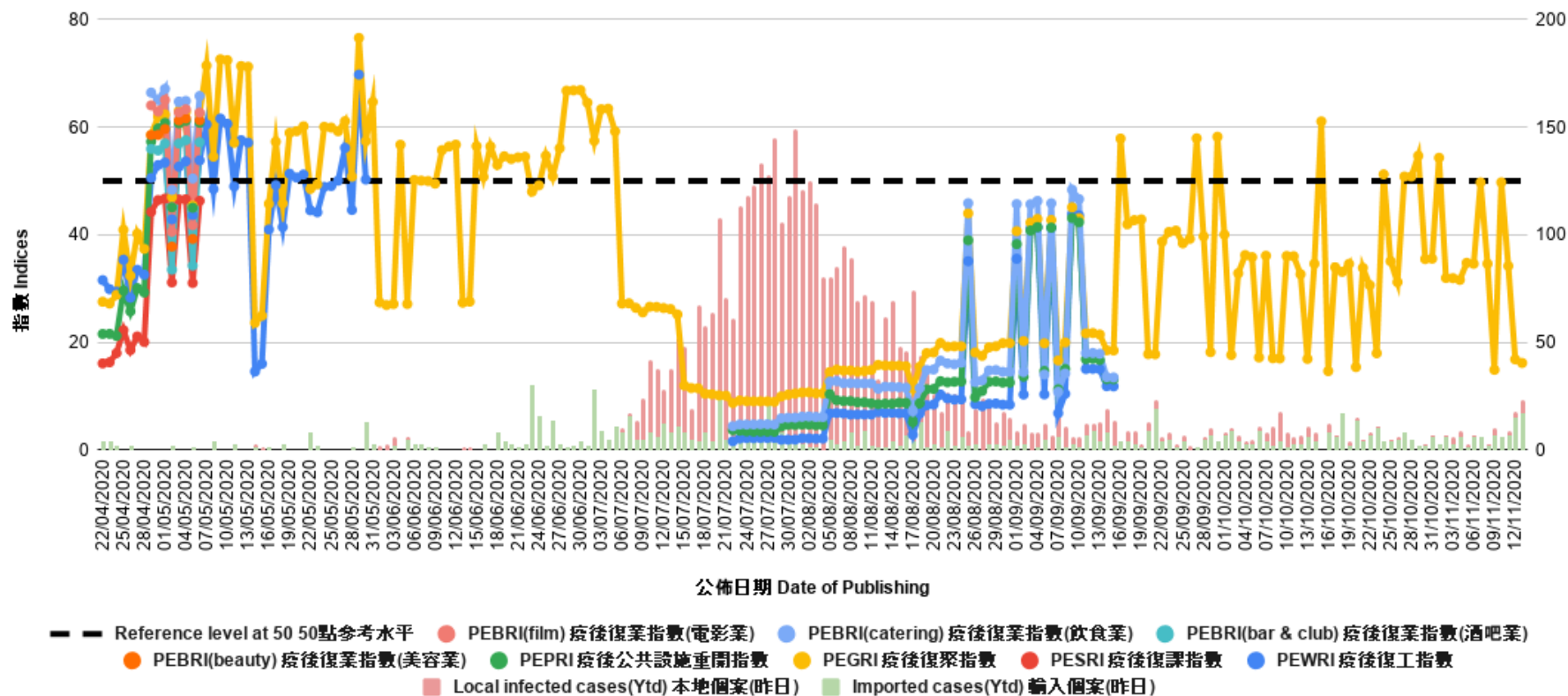
# Survey Result - PENRI

9

<b>Date of Publication</b>	<b><u>30/10</u></b>	<b><u>31/10</u></b>	<b><u>1/11</u></b>	<b><u>2/11</u></b>	<b><u>3/11</u></b>	<b><u>4/11</u></b>	<b><u>5/11</u></b>	<b><u>6/11</u></b>	<b><u>7/11</u></b>	<b><u>8/11</u></b>	<b><u>9/11</u></b>	<b><u>10/11</u></b>	<b><u>11/11</u></b>	<b><u>12/11</u></b>	<b><u>13/11</u></b>
<b>Imported Cases(Ytd)</b>	<b>2</b>	<b>6</b>	<b>3</b>	<b>6</b>	<b>3</b>	<b>6</b>	<b>1</b>	<b>6</b>	<b>6</b>	<b>2</b>	<b>7</b>	<b>6</b>	<b>7</b>	<b>15</b>	<b>16</b>
<b>Local Infection Cases(Ytd)</b>	<b>1</b>	<b>1</b>	<b>0</b>	<b>1</b>	<b>3</b>	<b>3</b>	<b>2</b>	<b>1</b>	<b>0</b>	<b>1</b>	<b>3</b>	<b>0</b>	<b>2</b>	<b>3</b>	<b>7</b>
Post-Epidemic Gathering Resumption Index (PEGRI)	35.5	35.6	54.3	32.0	31.9	31.6	34.8	34.6	49.7	34.6	14.9	49.8	34.2	16.9	16.2

# Survey Result - PENRI

10



# POP



---

HONG KONG PUBLIC OPINION PROGRAM

HONG KONG PUBLIC OPINION RESEARCH INSTITUTE

香港民意研究所 之 香港民意研究計劃

---

**“We Hongkongers” Panel Survey**

**Latest Results**

**November 13, 2020**

# Contact Information - “We Hongkongers” Panel Survey

12

	<b>HKPOP Panel</b>
Date of survey	November 9, 3pm – November 12, 3pm
Survey method	Online survey
Target population	Hong Kong residents aged 12+
Total sample size <sup>#</sup>	4,755
Response rate	9.6%
Sampling error	Sampling error of percentages at +/-1% at 95% confidence level
Weighting method	The figures are rim-weighted according to 1) gender-age distribution, educational attainment (highest level attended) distribution, economic activity status distribution of Hong Kong population and by District Councils population figures from Census and Statistics Department; 2) Voting results of District Councils Election from Registration and Electoral Office; 3) rating distribution of Chief Executive from regular tracking surveys.

# In order to avoid response fatigue, email invitations are only sent to around half of the panel members under systematic sampling since Nov 2.

# Survey Result - “We Hongkongers” Panel Survey

13

- Latest survey period: 9-12/11/2020
- Question: There is a saying in society that the Hong Kong Police has arrested RTHK producer Choy Yuk Ling out of political motives. How much do you believe or disbelieve in such a saying?

	Pro-democracy camp supporters (n=4,067)	Non-pro-democracy camp supporters* (n=422)	Combined^ (n=4,489)	
Very much believe	89%	31%	59%	
Somewhat believe	7%	13%	10%	
	} 96%		} 69%	
Half-half	<1%	9%	5%	
Somewhat disbelieve	<1%	7%	4%	
Very much disbelieve	4%	38%	21%	
	} 4%		} 25%	
Don't know / Hard to say	<1%	2%	1%	
Mean†	4.8	2.9	3.8	

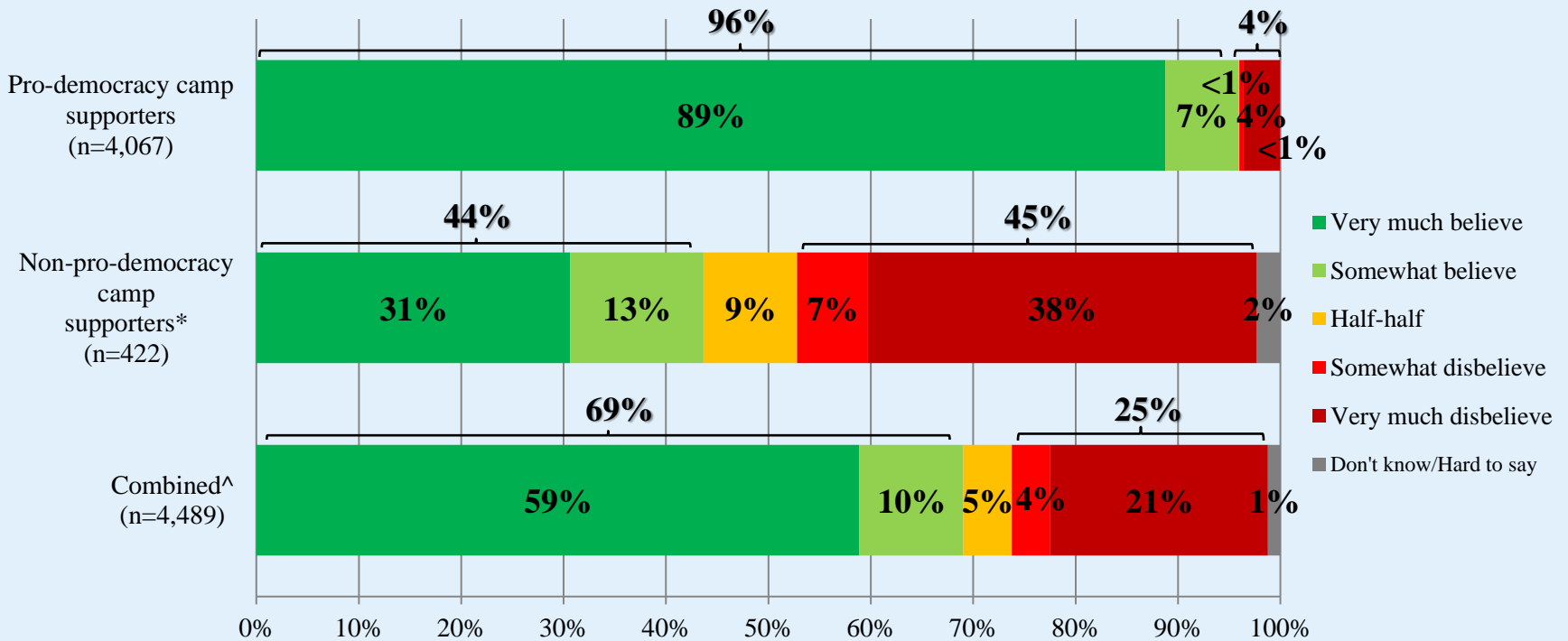
\* Include: pro-establishment camp supporters, centrist supporters, no political inclination / politically neutral / do not belong to any camp

^ The aggregated figures come from adjusting the by-group weighted figures using ratio of “pan-democratic” vs “non-pan-democratic” collected in regular tracking survey.

† The mean value is calculated by quantifying all individual responses into 1, 2, 3, 4, 5 marks according to their degree of positive level, where 1 is the lowest and 5 the highest, and then calculate the sample mean.

# Survey Result - “We Hongkongers” Panel Survey

- Latest survey period: 9-12/11/2020
- Question: There is a saying in society that the Hong Kong Police has arrested RTHK producer Choy Yuk Ling out of political motives. How much do you believe or disbelieve in such a saying?



\* Include: pro-establishment camp supporters, centrist supporters, no political inclination / politically neutral / do not belong to any camp

^ The aggregated figures come from adjusting the by-group weighted figures using ratio of “pan-democratic” vs “non-pan-democratic” collected in regular tracking survey.