

POP



HONG KONG PUBLIC OPINION PROGRAM

HONG KONG PUBLIC OPINION RESEARCH INSTITUTE

香港民意研究所 之 香港民意研究計劃

Community Democracy Project -

Community Health Module

Latest Results

October 23, 2020

Contact Information - Community Health Module

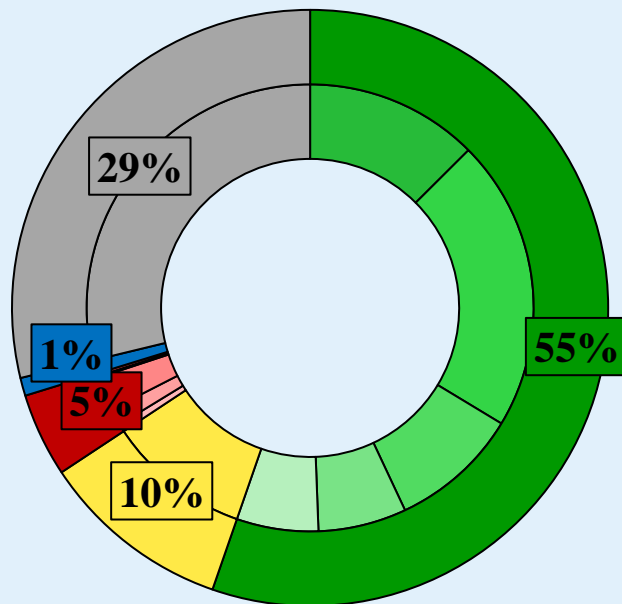
2

	HKPOP Panel	
Date of survey	October 15, 3pm – October 22, 3pm	
Survey method	Online survey	
Target population	Hong Kong residents aged 12+	
	Representative Panel	Volunteer Panel
Total sample size	938	10,551
Response rate	10.2%	10.9%
Sampling error	Sampling error of percentages at +/-3% at 95% confidence level	Sampling error of percentages at +/-1% at 95% confidence level
Weighting method	The figures are rim-weighted according to 1) gender-age distribution of Hong Kong population and by District Councils population figures from Census and Statistics Department; 2) Voting results of District Councils Election from Registration and Electoral Office; 3) rating distribution of Chief Executive from regular tracking surveys.	

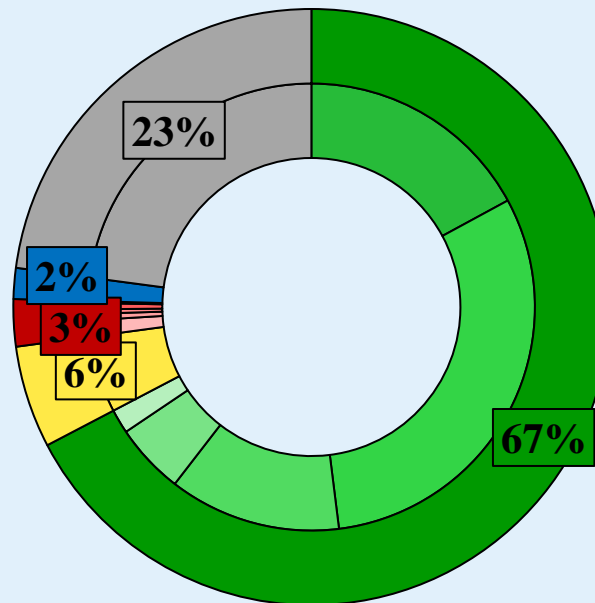
Survey Result - Community Health Module

3

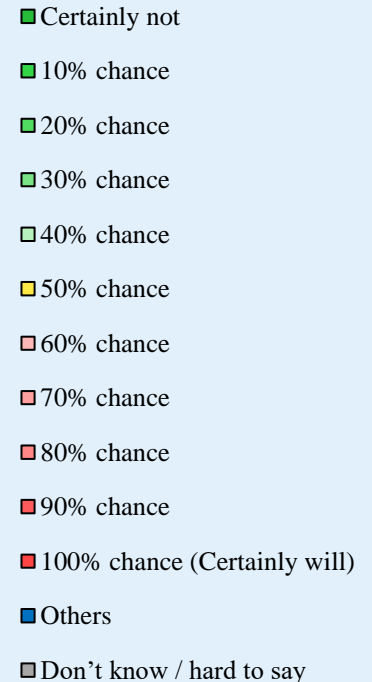
- Latest survey period: 15-22/10/2020
- Question: How likely do you think it is that you will contract novel coronavirus pneumonia over the next one month?



Representative Panel



Volunteer Panel

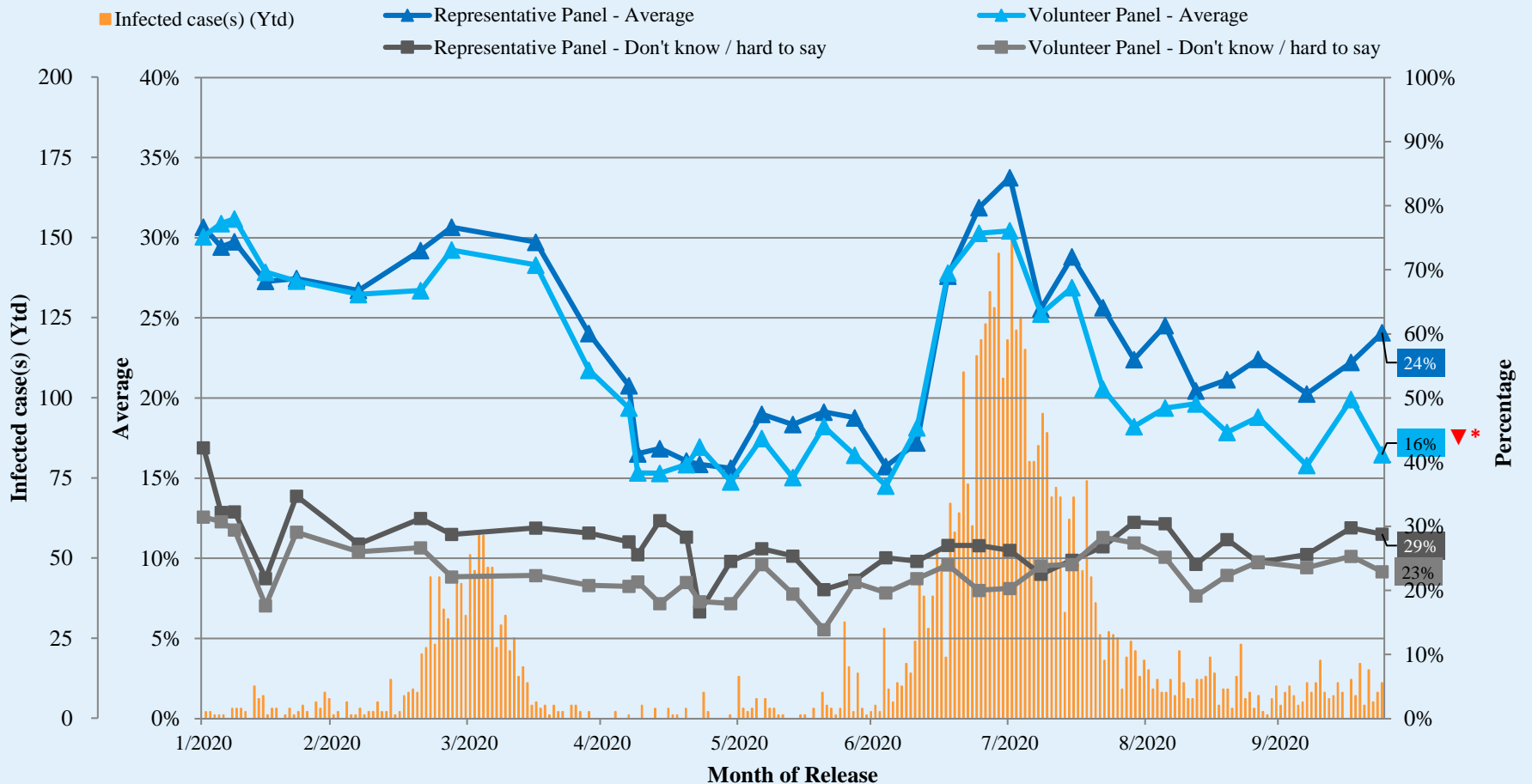


^ Answer options included: 0-10 rating scale, others and don't know / hard to say.

Survey Result - Community Health Module

4

Assessment of the public's expected chance of COVID-19 infection



^ Answer options included: 0-10 rating scale, others and don't know / hard to say.

* Significant change

Survey Result - Community Health Module

5

- **Latest survey period: 15-22/10/2020**
- **Last survey period: 5-15/10/2020** (*Representative Panel N=975 Volunteer Panel N=11,367*)
- **Second last survey period: 24/9-5/10/2020** (*Representative Panel N=832 Volunteer Panel N=10,925*)

Opinion Question [^]		Representative Panel (N=935)				Volunteer Panel (N=10,541)			
		Satisfied	Half-half	Dissatisfied	Mean [†]	Satisfied	Half-half	Dissatisfied	Mean [†]
Q2 How satisfied or dissatisfied are you with the government's performance in handling novel coronavirus pneumonia?	Latest	28%	17%	55%	2.3	27%▲*	10%	63% ▼*	2.2▲*
	Last	27%	18%	55%	2.3	24%	9%	66%	2.1
	Second Last	35%	13%	53%	2.5	25%	9%	65%	2.1

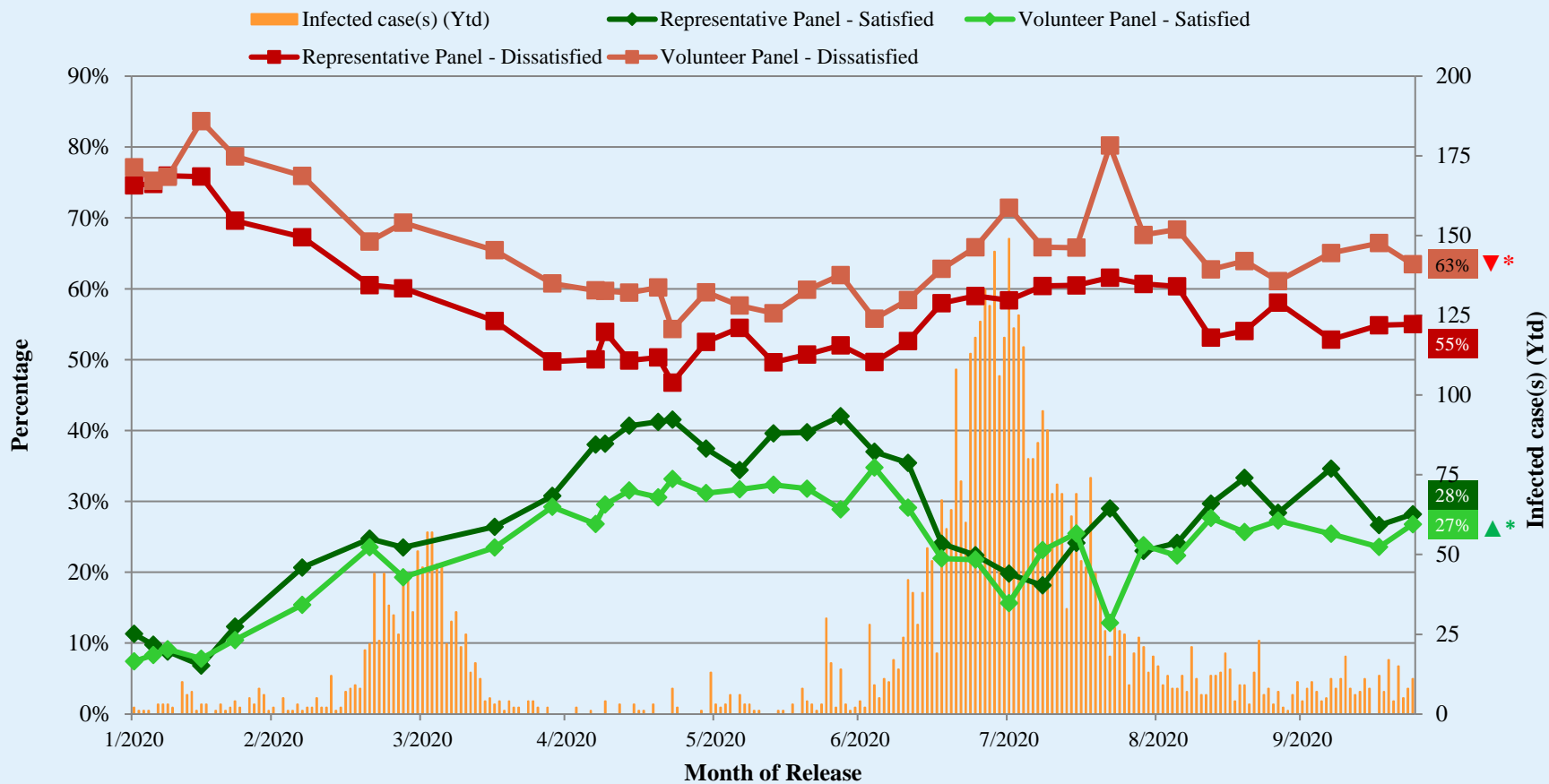
[^] Answer options included: very much satisfied, somewhat satisfied, half-half, somewhat dissatisfied, very much dissatisfied and don't know / hard to say

[†] The mean value is calculated by quantifying all individual responses into 1, 2, 3, 4, 5 marks according to their degree of positive level, where 1 is the lowest and 5 the highest, and then calculate the sample mean.

* Significant change

Survey Result - Community Health Module

Appraisal of HK Government's performance in handling novel coronavirus pneumonia



^ Answer options included: very much satisfied, somewhat satisfied, half-half, somewhat dissatisfied, very much dissatisfied and don't know / hard to say.

* Significant change

POP



HONG KONG PUBLIC OPINION PROGRAM

HONG KONG PUBLIC OPINION RESEARCH INSTITUTE

香港民意研究所 之 香港民意研究計劃

Community Democracy Project - Community Health Module

Post-Epidemic Normality Resumption Index (PENRI)

Latest Results

October 23, 2020

Contact Information - PENRI

8

	HKPOP Panel
Date of survey	October 13, 3pm – October 22, 3pm
Survey method	Online survey
Target population	Hong Kong residents aged 12+
Total sample size	11,411
Response rate	10.8%
Sampling error	Sampling error of percentages at +/-1% at 95% confidence level
Weighting method	The figures are rim-weighted according to 1) gender-age distribution of Hong Kong population and by District Councils population figures from Census and Statistics Department; 2) Voting results of District Councils Election from Registration and Electoral Office; 3) rating distribution of Chief Executive from regular tracking surveys.

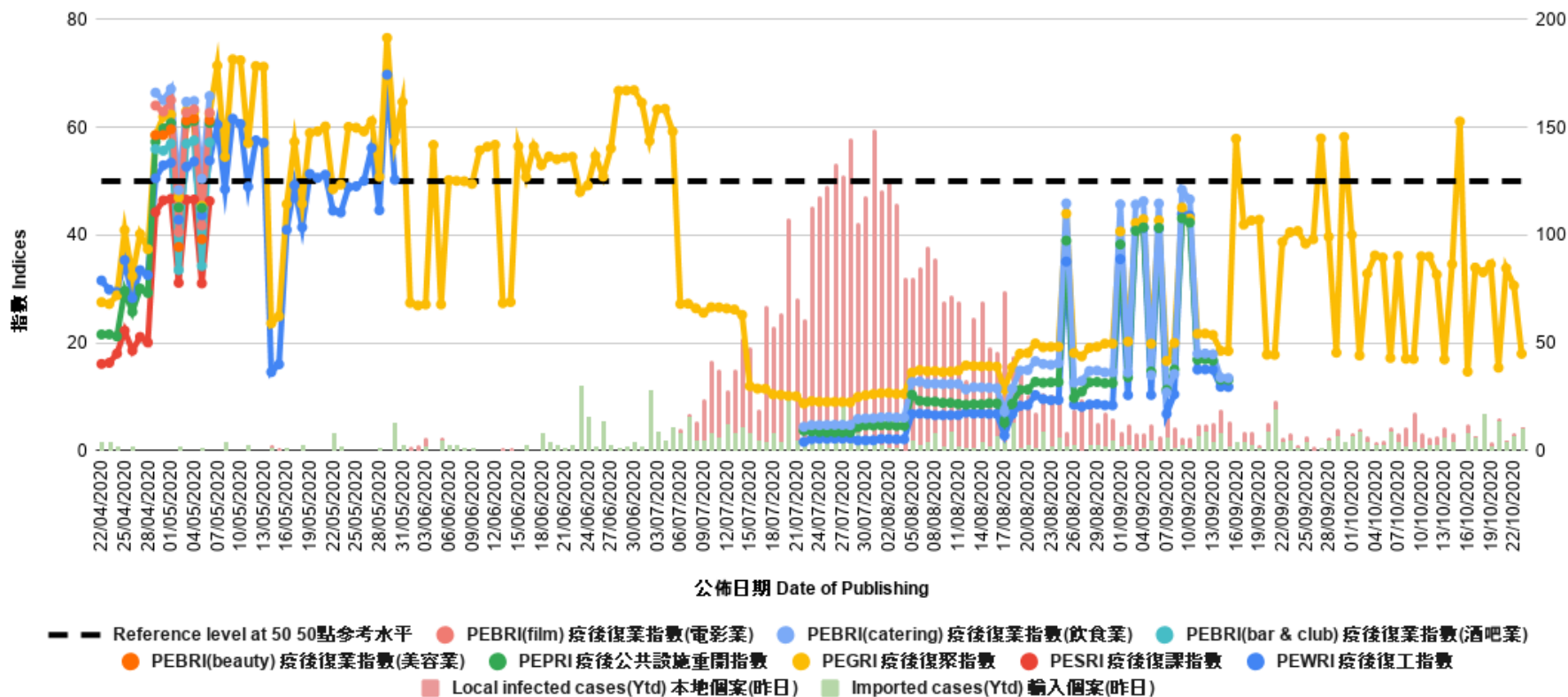
Survey Result - PENRI

9

Date of Publication	<u>9/10</u>	<u>10/10</u>	<u>11/10</u>	<u>12/10</u>	<u>13/10</u>	<u>14/10</u>	<u>15/10</u>	<u>16/10</u>	<u>17/10</u>	<u>18/10</u>	<u>19/10</u>	<u>20/10</u>	<u>21/10</u>	<u>22/10</u>	<u>23/10</u>
Imported Cases(Ytd)	4	1	3	3	6	4	0	8	6	17	2	14	4	7	10
Local Infection Cases(Ytd)	14	7	3	4	5	4	0	4	1	0	2	1	1	1	1
Post-Epidemic Gathering Resumption Index (PEGRI)	17.0	36.1	36.0	32.7	17.0	34.6	61.1	14.7	34.0	33.1	34.6	15.4	33.9	30.6	18.0

Survey Result - PENRI

10



POP



HONG KONG PUBLIC OPINION PROGRAM

HONG KONG PUBLIC OPINION RESEARCH INSTITUTE

香港民意研究所 之 香港民意研究計劃

“We Hongkongers” Panel Survey

Latest Results

October 23, 2020

Contact Information - “We Hongkongers” Panel Survey

12

	HKPOP Panel
Date of survey	October 19, 3pm – October 22, 3pm
Survey method	Online survey
Target population	Hong Kong residents aged 12+
Total sample size	11,129
Response rate	10.5%
Sampling error	Sampling error of percentages at +/-1% at 95% confidence level
Weighting method	Rim-weighted according to 1) gender-age distribution, educational attainment (highest level attended) distribution, economic activity status distribution of Hong Kong population and by District Councils population figures from Census and Statistics Department; 2) Voting results of District Councils Election from Registration and Electoral Office; 3) rating distribution of Chief Executive from regular tracking surveys.

Survey Result - “We Hongkongers” Panel Survey

- **Latest Date of survey: 19-22/10/2020**
- **Question: There is a saying in society that it was out of political reasons that the Education Bureau overturned the school-based investigation of the School Management Committee of Alliance Primary School in Kowloon Tong and proceeded to deregister a teacher. How much do you believe or disbelieve in such a saying?**

	Pro-democracy camp supporters (n=9,511)	Non-pro-democracy camp supporters* (n=923)	Combined^ (n=10,434)
Very much believe	87%	28%	55%
Somewhat believe	10%	5%	7%
	97%	33%	63%
Half-half	1%	9%	5%
Somewhat disbelieve	<1%	12%	7%
Very much disbelieve	2%	39%	22%
	2%	52%	28%
Don't know / Hard to say	<1%	6%	3%
Mean†	4.8	2.7	3.7

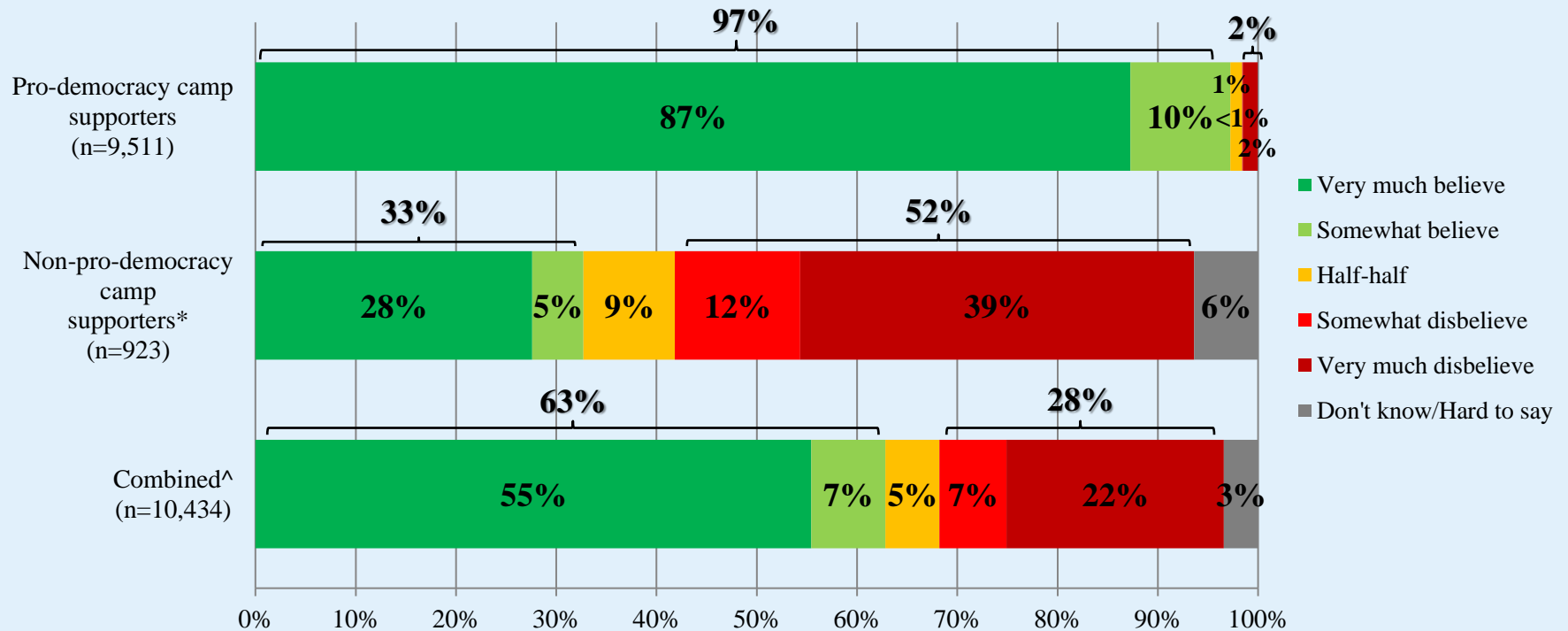
* Include: pro-establishment camp supporters, centrist supporters, no political inclination / politically neutral / do not belong to any camp

^ The aggregated figures come from adjusting the by-group weighted figures using ratio of “pan-democratic” vs “non-pan-democratic” collected in regular tracking survey.

† The mean value is calculated by quantifying all individual responses into 1, 2, 3, 4, 5 marks according to their degree of positive level, where 1 is the lowest and 5 the highest, and then calculate the sample mean.

Survey Result - “We Hongkongers” Panel Survey

- **Latest Date of survey: 19-22/10/2020**
- **Question: There is a saying in society that it was out of political reasons that the Education Bureau overturned the school-based investigation of the School Management Committee of Alliance Primary School in Kowloon Tong and proceeded to deregister a teacher. How much do you believe or disbelieve in such a saying?**



* Include: pro-establishment camp supporters, centrist supporters, no political inclination / politically neutral / do not belong to any camp

^ The aggregated figures come from adjusting the by-group weighted figures using ratio of “pan-democratic” vs “non-pan-democratic” collected in regular tracking survey.