

POP



HONG KONG PUBLIC OPINION PROGRAM

HONG KONG PUBLIC OPINION RESEARCH INSTITUTE

香港民意研究所 之 香港民意研究計劃

Community Democracy Project -

Community Health Module

Latest Results

September 25, 2020

Contact Information - Community Health Module

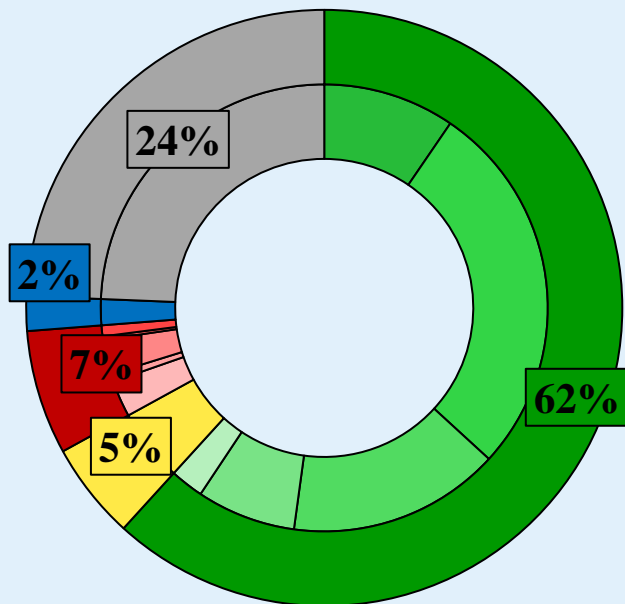
2

	HKPOP Panel	
Date of survey	September 17, 3pm – September 24, 3pm	
Survey method	Online survey	
Target population	Hong Kong residents aged 12+	
	Representative Panel	Volunteer Panel
Total sample size	946	12,234
Response rate	10.3%	12.9%
Sampling error	Sampling error of percentages at +/-3% at 95% confidence level	Sampling error of percentages at +/-1% at 95% confidence level
Weighting method	The figures are rim-weighted according to 1) gender-age distribution of Hong Kong population and by District Councils population figures from Census and Statistics Department; 2) Voting results of District Councils Election from Registration and Electoral Office; 3) rating distribution of Chief Executive from regular tracking surveys.	

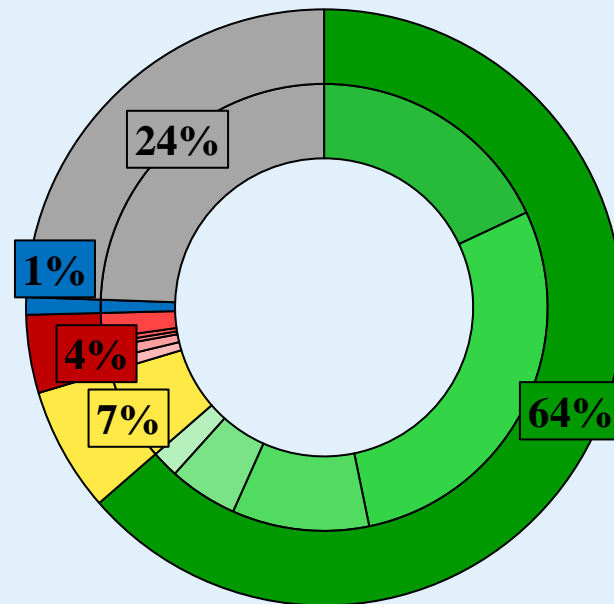
Survey Result - Community Health Module

3

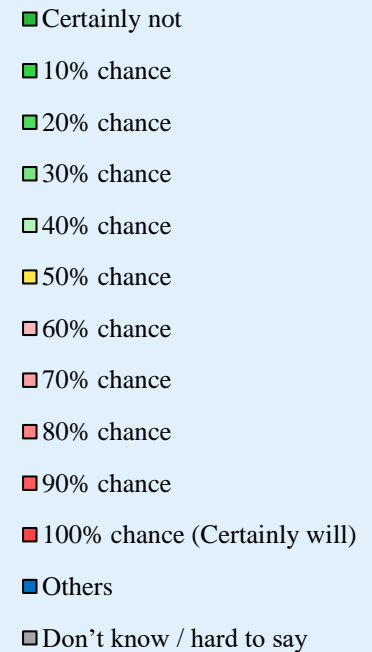
- Latest survey period: 17-24/9/2020
- Question: How likely do you think it is that you will contract novel coronavirus pneumonia over the next one month?



Representative Panel



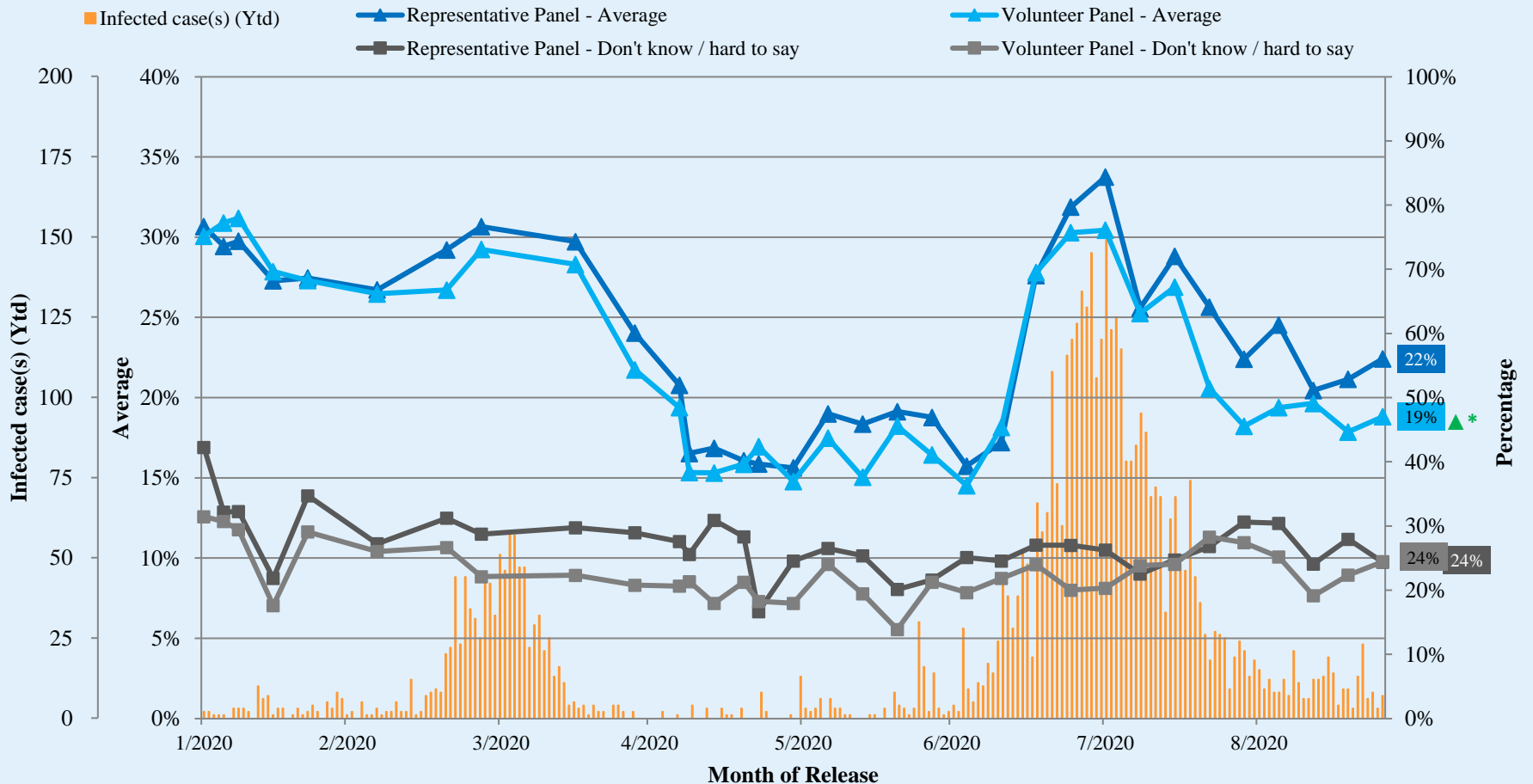
Volunteer Panel



^ Answer options included: 0-10 rating scale, others and don't know / hard to say.

Survey Result - Community Health Module

Assessment of the public's expected chance of COVID-19 infection



^ Answer options included: 0-10 rating scale, others and don't know / hard to say.

* Significant change

Survey Result - Community Health Module

5

- **Latest survey period: 17-24/9/2020**
- **Last survey period: 10-17/9/2020** (*Representative Panel N=900 Volunteer Panel N=12,048*)
- **Second last survey period: 3-10/9/2020** (*Representative Panel N=816 Volunteer Panel N=11,573*)

Opinion Question [^]		Representative Panel (N=945)				Volunteer Panel (N=12,226)			
		Satisfied	Half-half	Dissatisfied	Mean [†]	Satisfied	Half-half	Dissatisfied	Mean [†]
Q2 How satisfied or dissatisfied are you with the government's performance in handling novel coronavirus pneumonia?	Latest	28% ▼*	14%	58%	2.3	27% ▲*	10%	61% ▼*	2.2 ▲*
	Last	33%	13%	54%	2.5	26%	10%	64%	2.1
	Second Last	30%	16%	53%	2.3	28%	9%	63%	2.2

[^] Answer options included: very much satisfied, somewhat satisfied, half-half, somewhat dissatisfied, very much dissatisfied and don't know / hard to say

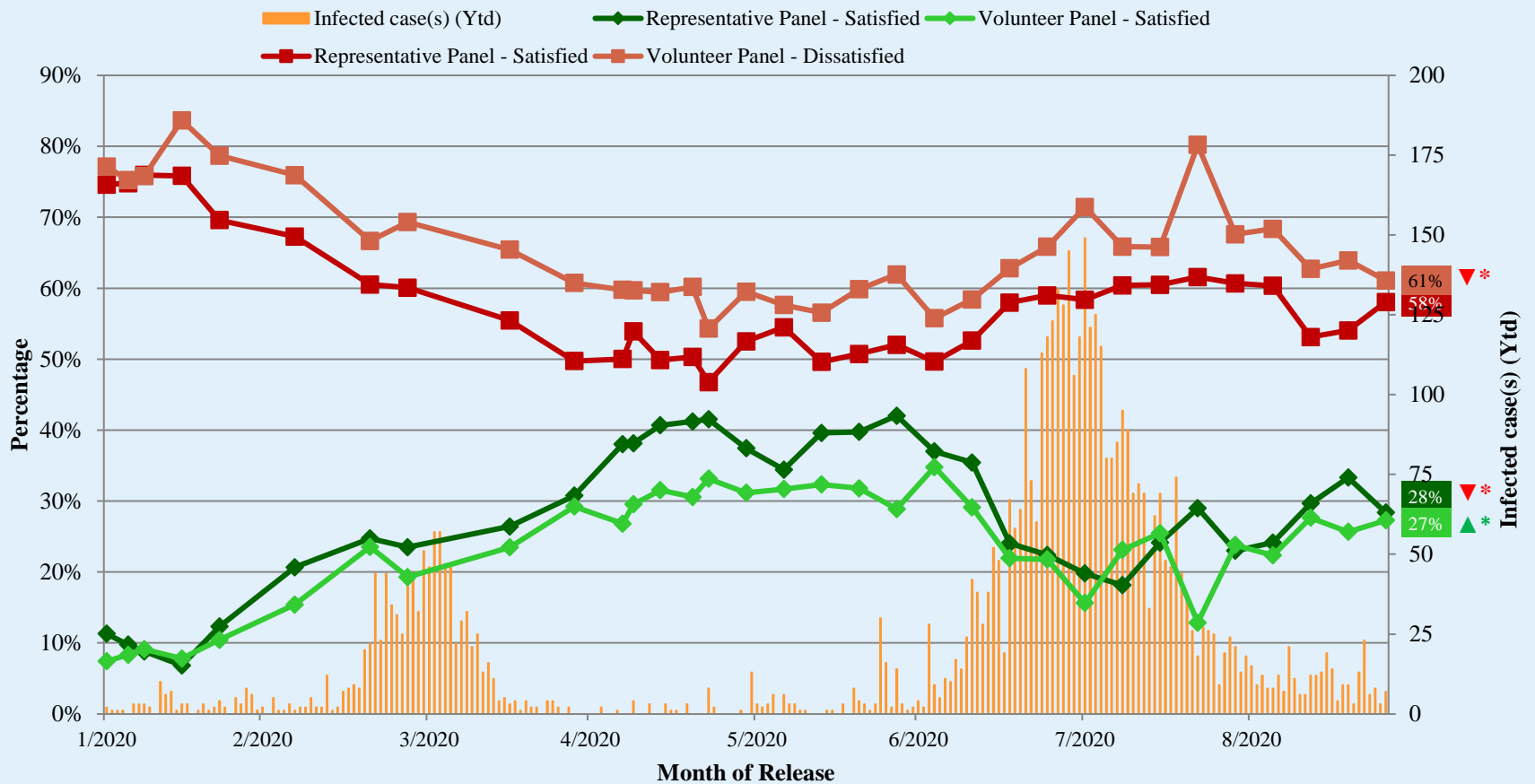
[†] The mean value is calculated by quantifying all individual responses into 1, 2, 3, 4, 5 marks according to their degree of positive level, where 1 is the lowest and 5 the highest, and then calculate the sample mean.

* Significant change

Survey Result - Community Health Module

6

Appraisal of HK Government's performance in handling novel coronavirus pneumonia



^ Answer options included: very much satisfied, somewhat satisfied, half-half, somewhat dissatisfied, very much dissatisfied and don't know / hard to say.

* Significant change

POP



HONG KONG PUBLIC OPINION PROGRAM

HONG KONG PUBLIC OPINION RESEARCH INSTITUTE

香港民意研究所 之 香港民意研究計劃

Community Democracy Project - Community Health Module

Post-Epidemic Normality Resumption Index (PENRI)

Latest Results

September 25, 2020

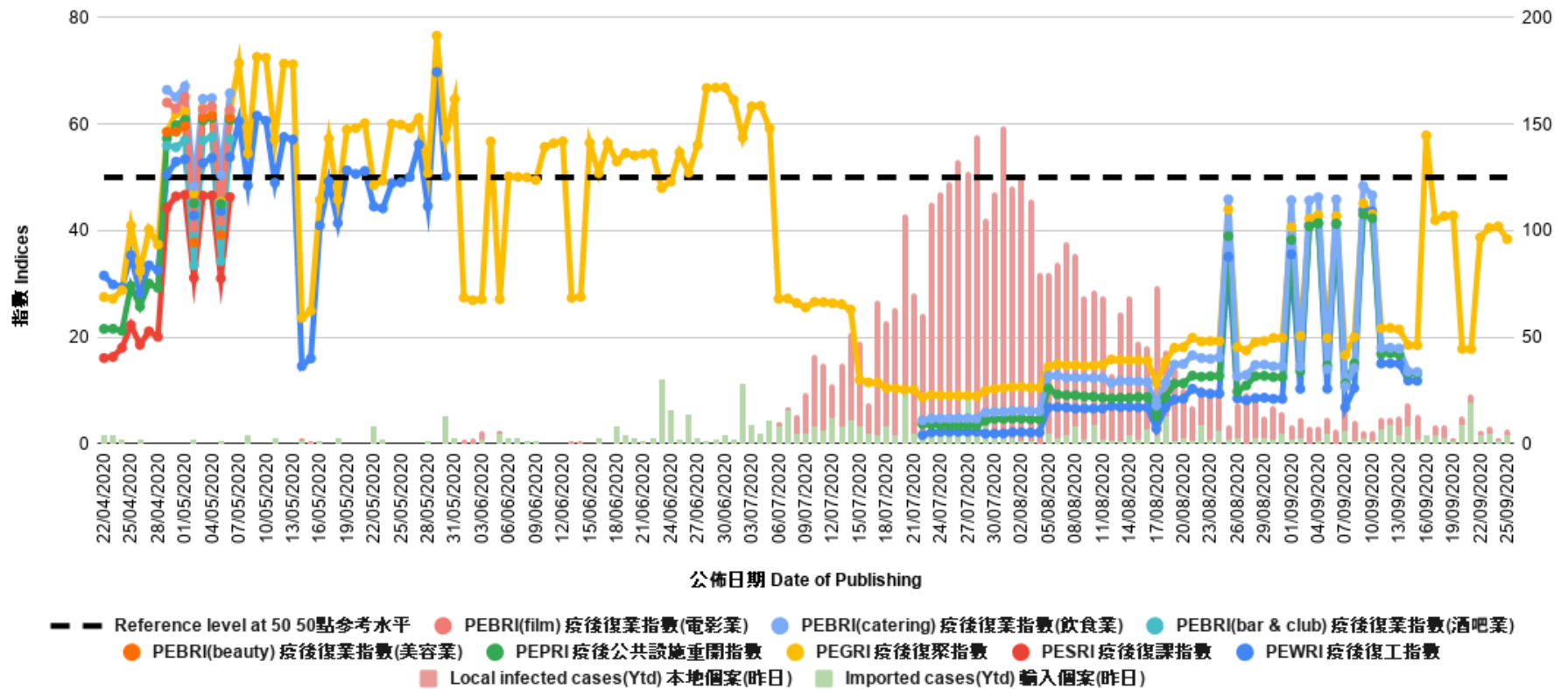
Contact Information - PENRI

8

	HKPOP Panel
Date of survey	September 15, 3pm – September 24, 3pm
Survey method	Online survey
Target population	Hong Kong residents aged 12+
Total sample size	12,957
Response rate	12.5%
Sampling error	Sampling error of percentages at +/-1% at 95% confidence level
Weighting method	The figures are rim-weighted according to 1) gender-age distribution of Hong Kong population and by District Councils population figures from Census and Statistics Department; 2) Voting results of District Councils Election from Registration and Electoral Office; 3) rating distribution of Chief Executive from regular tracking surveys.

Survey Result - PENRI

10



POP



HONG KONG PUBLIC OPINION PROGRAM

HONG KONG PUBLIC OPINION RESEARCH INSTITUTE

香港民意研究所 之 香港民意研究計劃

“We Hongkongers” Panel Survey

Latest Results

September 25, 2020

Contact Information - “We Hongkongers” Panel Survey

12

	HKPOP Panel
Date of survey	September 21, ~11pm – September 24, 3pm
Survey method	Online survey
Target population	Hong Kong residents aged 12+
Total sample size	5,971*
Response rate	5.7%
Sampling error	Sampling error of percentages at +/-1% at 95% confidence level
Weighting method	Rim-weighted according to 1) gender-age distribution, educational attainment (highest level attended) distribution, economic activity status distribution of Hong Kong population and by District Councils population figures from Census and Statistics Department; 2) Voting results of District Councils Election from Registration and Electoral Office; 3) rating distribution of Chief Executive from regular tracking surveys.

* The original answer options are "Very much support / Somewhat support / Half-half / Somewhat oppose / Very much oppose", POP changed the wording to "Very much support (the suspension) / Somewhat support (the suspension) / Half-half / Somewhat oppose (the suspension) / Very much oppose (the suspension)" at about 11 o'clock on the night of 21 September. This survey results only include those samples collected after the update.

Survey Result - “We Hongkongers” Panel Survey

- **Latest Date of survey: 21-24/9/2020**
- **Question: There is a view that the government should suspend the “Lantau Tomorrow Vision Project” which would cost at least \$600 billion. How much do you support or oppose this view?**

	Pro-democracy camp supporters (n=5,163)	Non-pro-democracy camp supporters* (n=542)	Combined^ (n=5,705)	
Very much support (the suspension)	60%	16%	38%	
Somewhat support (the suspension)	2%	6%	4%	
	} 61%		} 41%	
Half-half	1%	11%	6%	
Somewhat oppose (the suspension)	3%	14%	9%	
Very much oppose (the suspension)	34%	48%	41%	
	} 37%		} 50%	
Don't know / Hard to say	<1%	4%	2%	
Mean†	3.5	2.2	2.9	

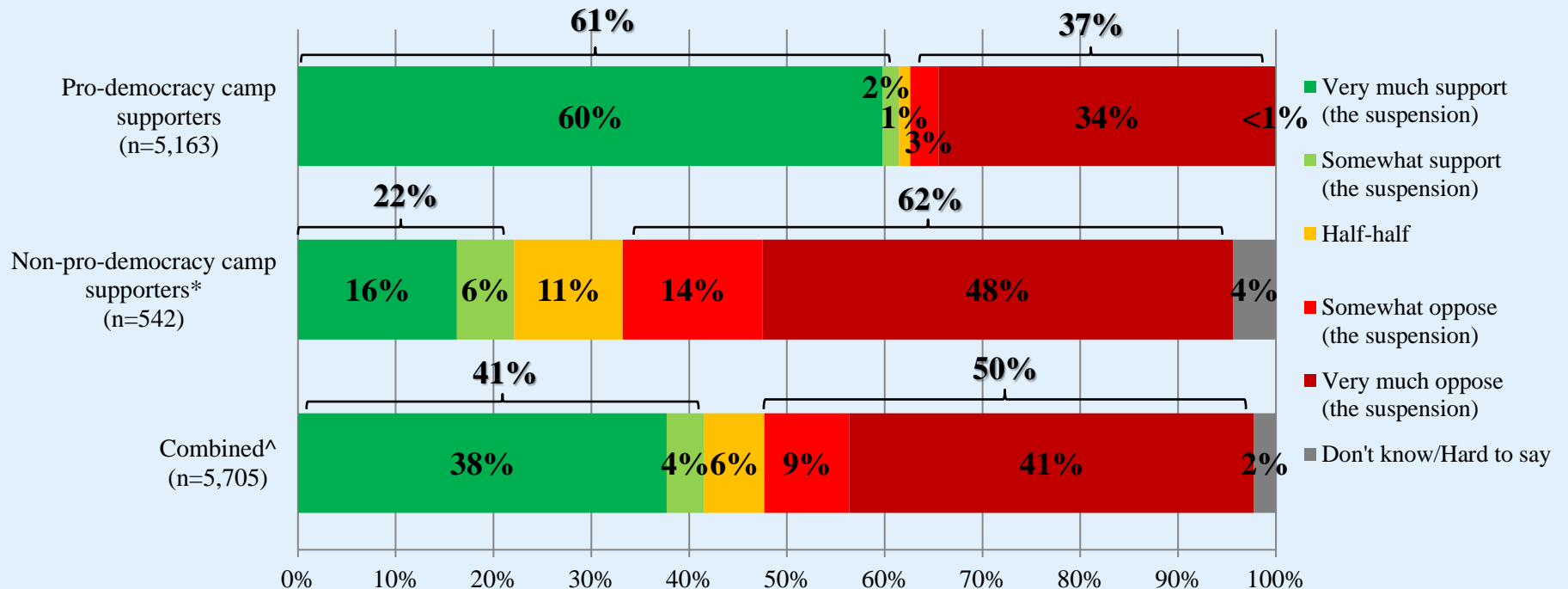
* Include: pro-establishment camp supporters, centrist supporters, no political inclination / politically neutral / do not belong to any camp

^ The aggregated figures come from adjusting the by-group weighted figures using ratio of “pan-democratic” vs “non-pan-democratic” collected in regular tracking survey.

† The mean value is calculated by quantifying all individual responses into 1, 2, 3, 4, 5 marks according to their degree of positive level, where 1 is the lowest and 5 the highest, and then calculate the sample mean.

Survey Result - “We Hongkongers” Panel Survey

- **Latest Date of survey: 21-24/9/2020**
- **Question: There is a view that the government should suspend the “Lantau Tomorrow Vision Project” which would cost at least \$600 billion. How much do you support or oppose this view?**



* Include: pro-establishment camp supporters, centrist supporters, no political inclination / politically neutral / do not belong to any camp

^ The aggregated figures come from adjusting the by-group weighted figures using ratio of “pan-democratic” vs “non-pan-democratic” collected in regular tracking survey.