

POP



HONG KONG PUBLIC OPINION PROGRAM

HONG KONG PUBLIC OPINION RESEARCH INSTITUTE

香港民意研究所 之 香港民意研究計劃

Community Democracy Project -

Community Health Module

Latest Results

September 18, 2020

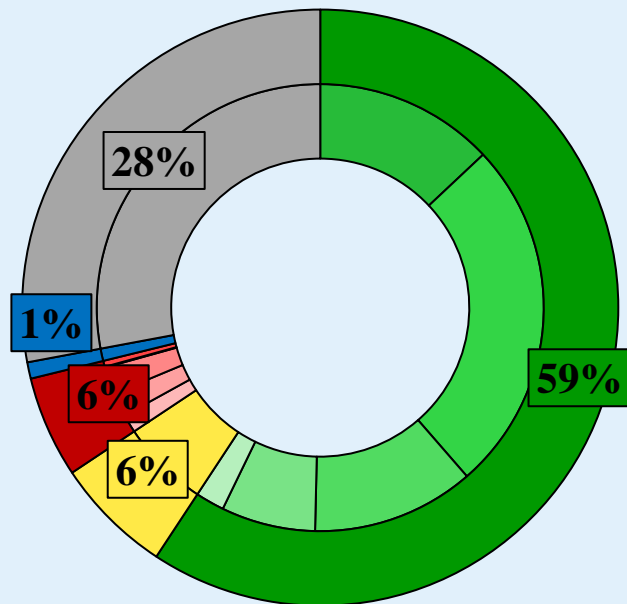
Contact Information - Community Health Module

2

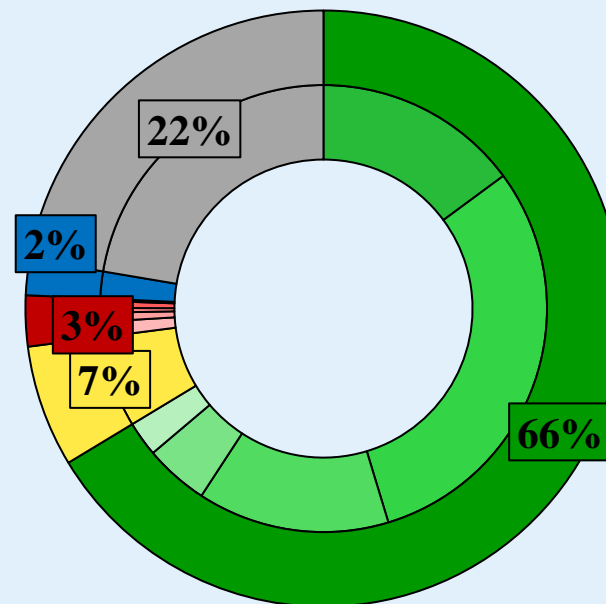
	HKPOP Panel	
Date of survey	September 10, 3pm – September 17, 3pm	
Survey method	Online survey	
Target population	Hong Kong residents aged 12+	
	Representative Panel	Volunteer Panel
Total sample size	900	12,060
Response rate	10.0%	12.7%
Sampling error	Sampling error of percentages at +/-3% at 95% confidence level	Sampling error of percentages at +/-1% at 95% confidence level
Weighting method	The figures are rim-weighted according to 1) gender-age distribution of Hong Kong population and by District Councils population figures from Census and Statistics Department; 2) Voting results of District Councils Election from Registration and Electoral Office; 3) rating distribution of Chief Executive from regular tracking surveys.	

Survey Result - Community Health Module

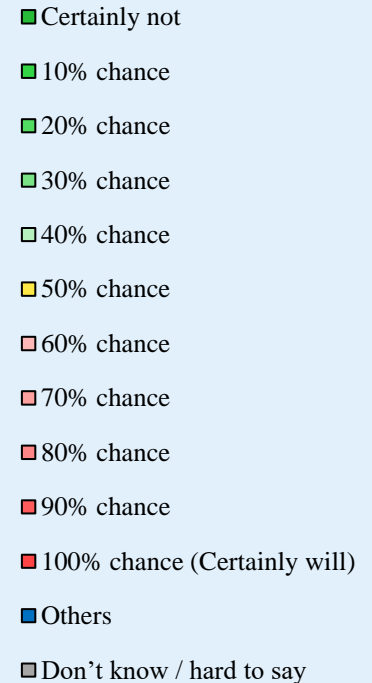
- Latest survey period: 10-17/9/2020
- Question: How likely do you think it is that you will contract novel coronavirus pneumonia over the next one month?



Representative Panel



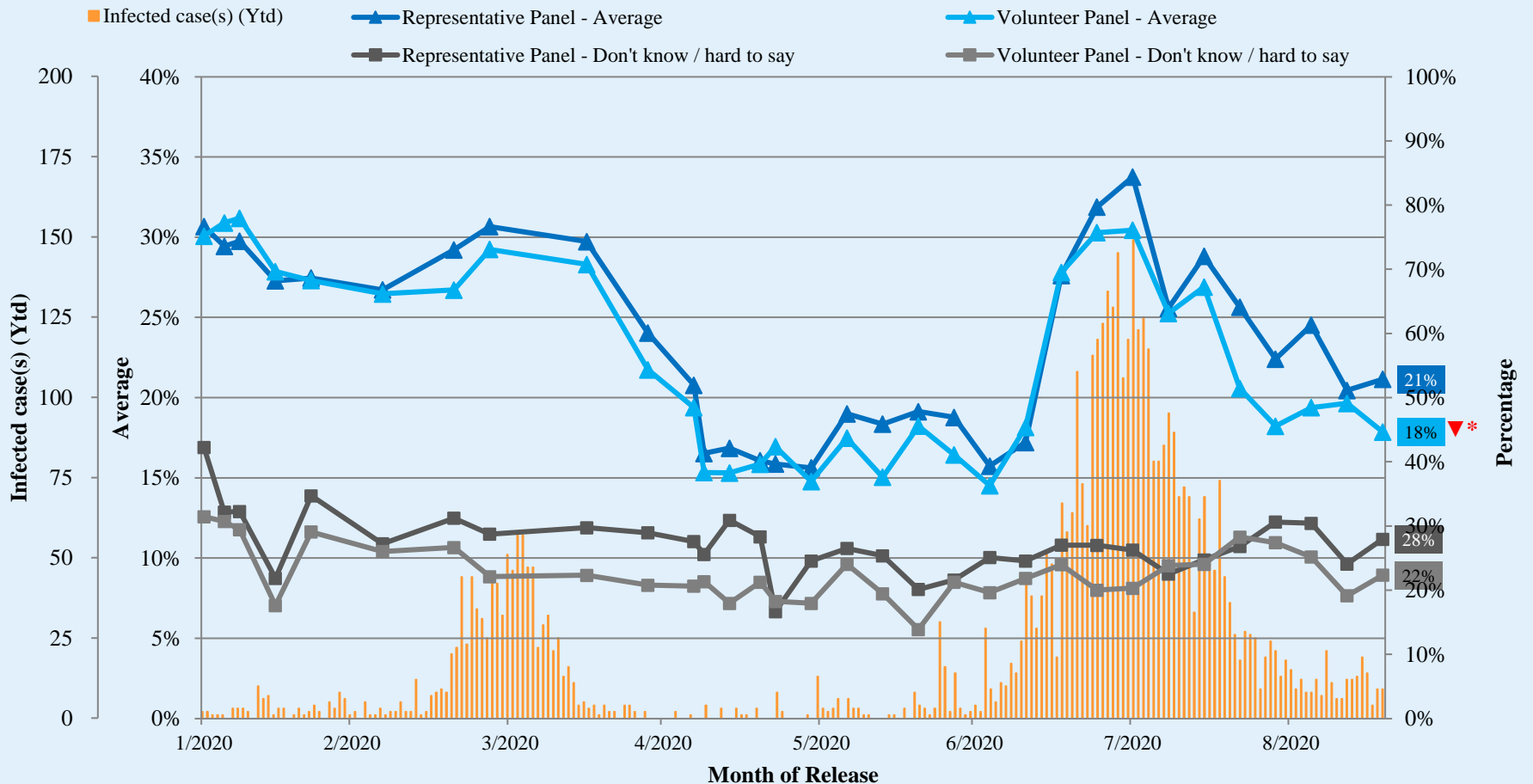
Volunteer Panel



^ Answer options included: 0-10 rating scale, others and don't know / hard to say.

Survey Result - Community Health Module

Assessment of the public's expected chance of COVID-19 infection



^ Answer options included: 0-10 rating scale, others and don't know / hard to say.

* Significant change

Survey Result - Community Health Module

5

- Latest survey period: 10-17/9/2020
- Last survey period: 3-10/9/2020 (*Representative Panel N=816 Volunteer Panel N=11,573*)
- Second last survey period: 27/8-3/9/2020 (*Representative Panel N=968 Volunteer Panel N=14,107*)

Opinion Question [^]		Representative Panel (N=900)				Volunteer Panel (N=12,048)			
		Satisfied	Half-half	Dissatisfied	Mean [†]	Satisfied	Half-half	Dissatisfied	Mean [†]
Q2 How satisfied or dissatisfied are you with the government's performance in handling novel coronavirus pneumonia?	Latest	33%	13%	54%	2.5	26% ▼*	10% ▲*	64%	2.1 ▼*
	Last	30%	16%	53%	2.3	28%	9%	63%	2.2
	Second Last	24%	15%	60%	2.2	22%	7%	68%	2.0

[^] Answer options included: very much satisfied, somewhat satisfied, half-half, somewhat dissatisfied, very much dissatisfied and don't know / hard to say

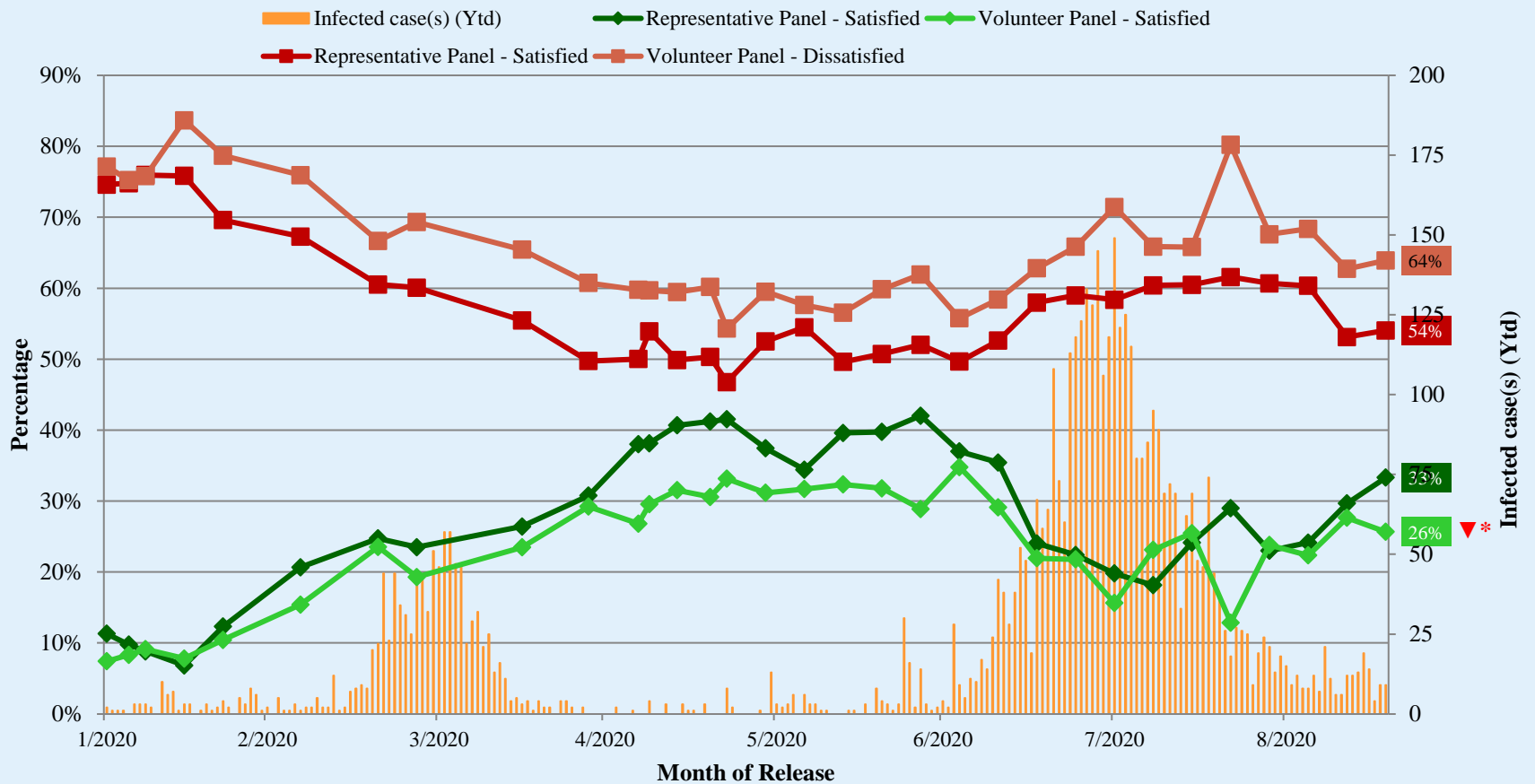
[†] The mean value is calculated by quantifying all individual responses into 1, 2, 3, 4, 5 marks according to their degree of positive level, where 1 is the lowest and 5 the highest, and then calculate the sample mean.

* Significant change

Survey Result - Community Health Module

6

Appraisal of HK Government's performance in handling novel coronavirus pneumonia



^ Answer options included: very much satisfied, somewhat satisfied, half-half, somewhat dissatisfied, very much dissatisfied and don't know / hard to say.

* Significant change

POP



HONG KONG PUBLIC OPINION PROGRAM

HONG KONG PUBLIC OPINION RESEARCH INSTITUTE

香港民意研究所 之 香港民意研究計劃

Community Democracy Project - Community Health Module

Post-Epidemic Normality Resumption Index (PENRI)

Latest Results

September 18, 2020

Contact Information - PENRI

8

	HKPOP Panel
Date of survey	September 7, 3pm – September 17, 3pm
Survey method	Online survey
Target population	Hong Kong residents aged 12+
Total sample size	12,955
Response rate	12.5%
Sampling error	Sampling error of percentages at +/-1% at 95% confidence level
Weighting method	The figures are rim-weighted according to 1) gender-age distribution of Hong Kong population and by District Councils population figures from Census and Statistics Department; 2) Voting results of District Councils Election from Registration and Electoral Office; 3) rating distribution of Chief Executive from regular tracking surveys.

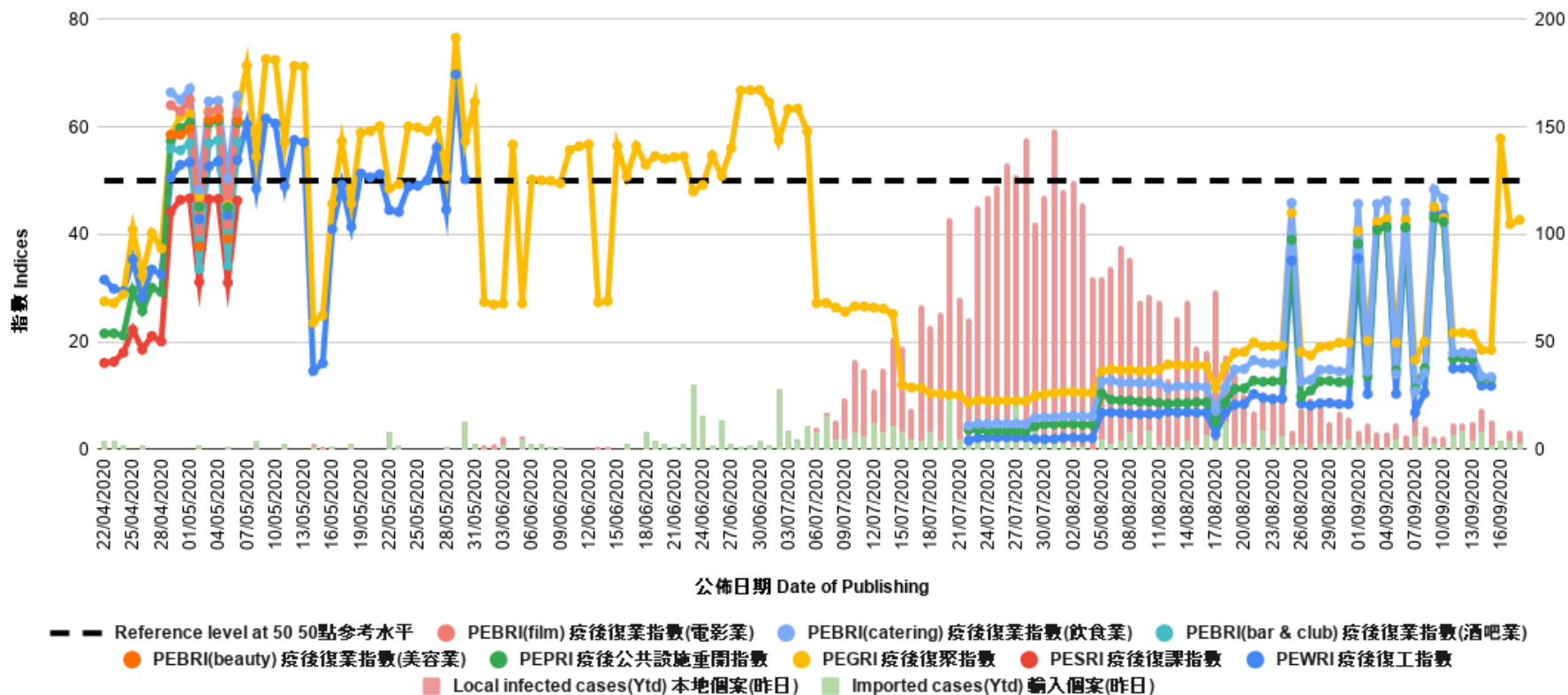
Survey Result - PENRI

9

Date of Publication	2/9	3/9	4/9	5/9	6/9	7/9	8/9	9/9	10/9	11/9	12/9	13/9	14/9	15/9	16/9	17/9	18/9
Imported Cases(Ytd)	3	0	1	5	0	6	1	3	1	7	9	4	8	2	4	4	3
Local Infection Cases(Ytd)	9	8	7	7	7	15	10	3	5	5	3	9	11	12	0	5	6
Post-Epidemic Work Resumption Index (PEWRI)	10.3	41.1	41.4	10.4	41.3	6.9	10.5	43.9	43.6	15.1	15.1	15.1	11.9	11.9	/	/	/
Post-Epidemic Public-Facilities Re-open Index (PEPRI)	13.7	40.8	41.4	14.7	41.3	11.3	15.1	43.1	42.3	16.9	17.0	16.8	13.2	13.2	/	/	/
Post-Epidemic Gathering Resumption Index (PEGRI)	20.3	42.3	43.0	19.8	42.8	16.7	20.0	45.1	43.1	21.7	21.8	21.5	18.6	18.5	57.9	42.0	42.7
Post-Epidemic Business Resumption Index (PEBRI) (catering)	14.5	45.7	46.3	14.0	45.9	10.8	14.3	48.4	46.6	18.0	18.0	17.9	13.6	13.5	/	/	/

Survey Result - PENRI

10



POP



HONG KONG PUBLIC OPINION PROGRAM

HONG KONG PUBLIC OPINION RESEARCH INSTITUTE

香港民意研究所 之 香港民意研究計劃

“We Hongkongers” Panel Survey

Latest Results

September 18, 2020

Contact Information - “We Hongkongers” Panel Survey

12

	HKPOP Panel
Date of survey	September 14, 3pm – September 17, 3pm
Survey method	Online survey
Target population	Hong Kong residents aged 12+
Total sample size	12,696
Response rate	12.2%
Sampling error	Sampling error of percentages at +/-1% at 95% confidence level
Weighting method	Rim-weighted according to 1) gender-age distribution, educational attainment (highest level attended) distribution, economic activity status distribution of Hong Kong population and by District Councils population figures from Census and Statistics Department; 2) Voting results of District Councils Election from Registration and Electoral Office; 3) rating distribution of Chief Executive from regular tracking surveys.

Survey Result - “We Hongkongers” Panel Survey

- **Latest Date of survey: 14-17/9/2020**
- **Question: There is a view that Hong Kong government should request the Guangdong government to extradite the 12 Hong Kong people intercepted by the Guangdong coast guard back to Hong Kong as soon as possible, so that their cases can be followed up in Hong Kong. How much do you support or oppose this view?**

	Pro-democracy camp supporters (n=11,002)	Non-pro-democracy camp supporters* (n=1,059)	Combined^ (n=12,061)	
Very much support	80%	25%	52%	
Somewhat support	10%	5%	7%	
	} 91%		} 60%	
Half-half	3%	8%	5%	
Somewhat oppose	1%	11%	6%	
Very much oppose	4%	47%	25%	
	} 5%		} 31%	
Don't know / Hard to say	2%	5%	3%	
Mean†	4.7	2.5	3.6	

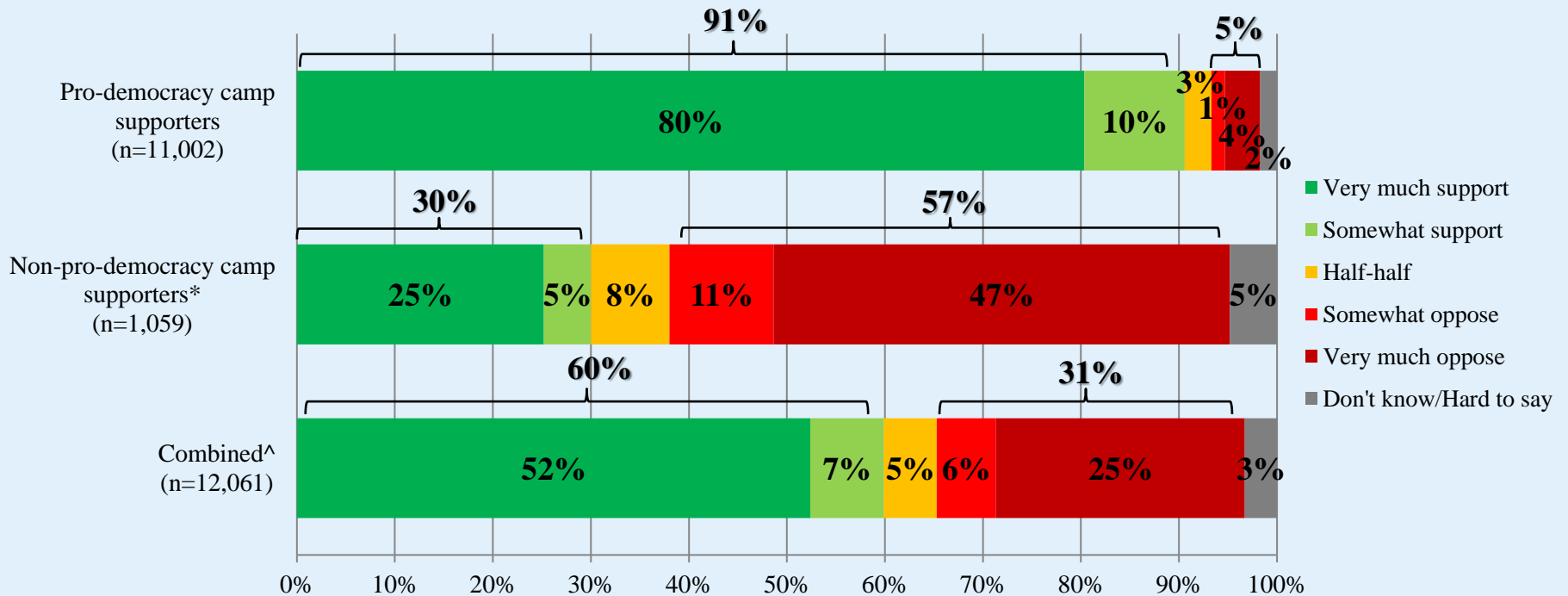
* Include: pro-establishment camp supporters, centrist supporters, no political inclination / politically neutral / do not belong to any camp

^ The aggregated figures come from adjusting the by-group weighted figures using ratio of “pan-democratic” vs “non-pan-democratic” collected in regular tracking survey.

† The mean value is calculated by quantifying all individual responses into 1, 2, 3, 4, 5 marks according to their degree of positive level, where 1 is the lowest and 5 the highest, and then calculate the sample mean.

Survey Result - “We Hongkongers” Panel Survey

- **Latest Date of survey: 14-17/9/2020**
- **Question: There is a view that Hong Kong government should request the Guangdong government to extradite the 12 Hong Kong people intercepted by the Guangdong coast guard back to Hong Kong as soon as possible, so that their cases can be followed up in Hong Kong. How much do you support or oppose this view?**



* Include: pro-establishment camp supporters, centrist supporters, no political inclination / politically neutral / do not belong to any camp

^ The aggregated figures come from adjusting the by-group weighted figures using ratio of “pan-democratic” vs “non-pan-democratic” collected in regular tracking survey.