

# POP



---

HONG KONG PUBLIC OPINION PROGRAM

HONG KONG PUBLIC OPINION RESEARCH INSTITUTE

香港民意研究所 之 香港民意研究計劃

---

**Community Democracy Project -**

**Community Health Module**

**Latest Results**

**September 11, 2020**

# Contact Information - Community Health Module

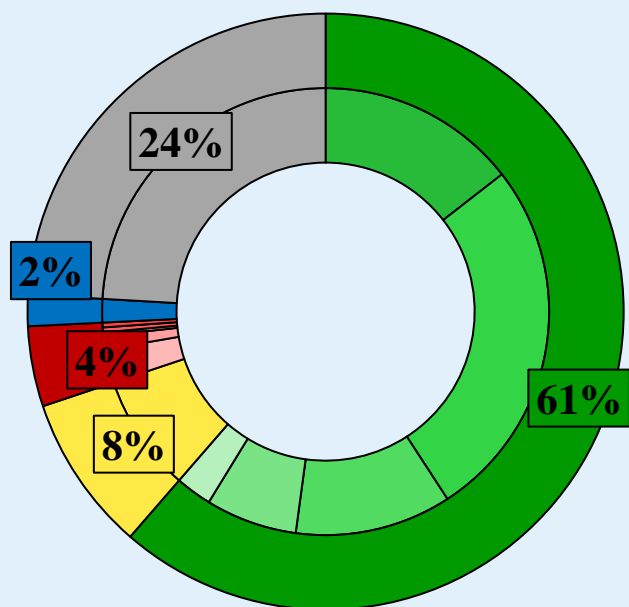
2

	<b>HKPOP Panel</b>	
Date of survey	September 3, 3pm – September 10, 3pm	
Survey method	Online survey	
Target population	Hong Kong residents aged 12+	
	Representative Panel	Volunteer Panel
Total sample size	817	11,586
Response rate	10.4%	12.2%
Sampling error	Sampling error of percentages at +/-3% at 95% confidence level	Sampling error of percentages at +/-1% at 95% confidence level
Weighting method	The figures are rim-weighted according to 1) gender-age distribution of Hong Kong population and by District Councils population figures from Census and Statistics Department; 2) Voting results of District Councils Election from Registration and Electoral Office; 3) rating distribution of Chief Executive from regular tracking surveys.	

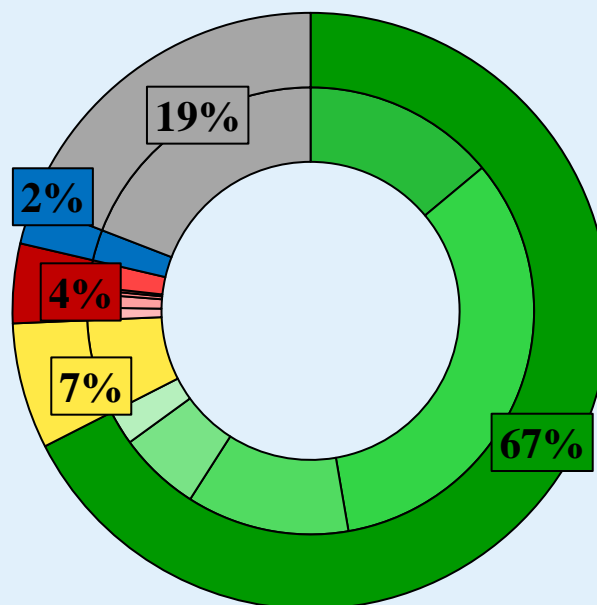
# Survey Result - Community Health Module

3

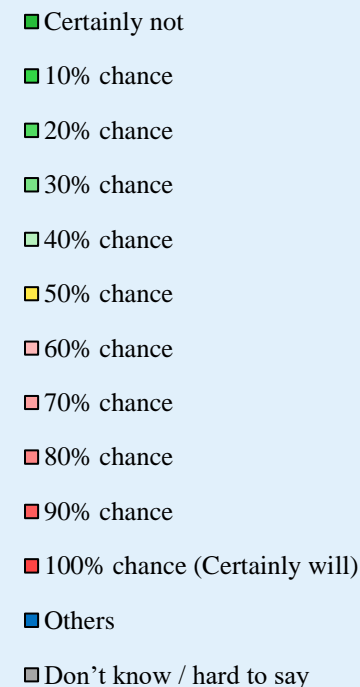
- Latest survey period: 3-10/9/2020
- Question: How likely do you think it is that you will contract novel coronavirus pneumonia over the next one month?



Representative Panel



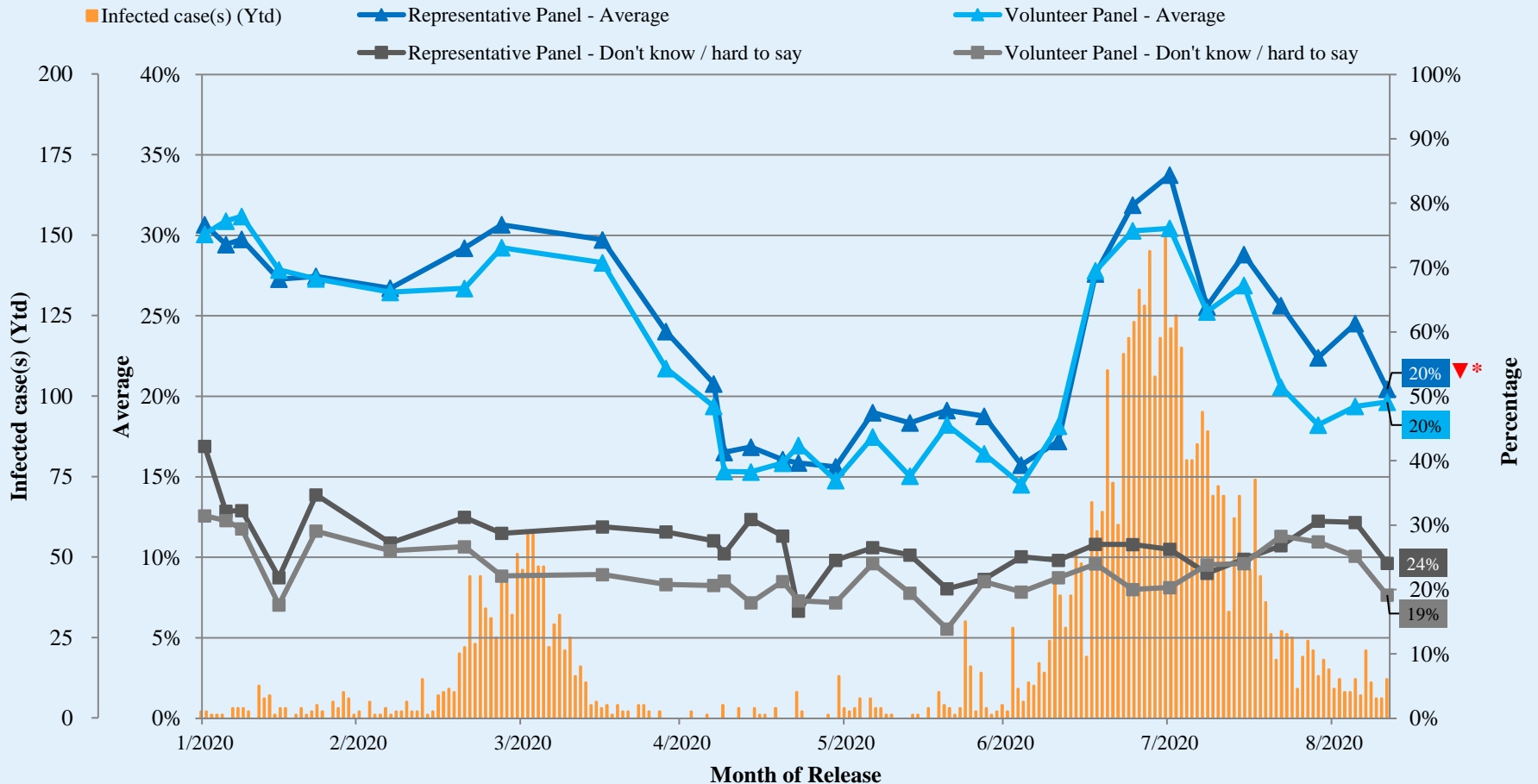
Volunteer Panel



^ Answer options included: 0-10 rating scale, others and don't know / hard to say.

# Survey Result - Community Health Module

## Assessment of the public's expected chance of COVID-19 infection



^ Answer options included: 0-10 rating scale, others and don't know / hard to say.

\* Significant change

# Survey Result - Community Health Module

5

- Latest survey period: 3-10/9/2020
- Last survey period: 27/8-3/9/2020 (Representative Panel N=968 Volunteer Panel N=14,107)
- Second last survey period: 20-27/8/2020 (Representative Panel N=1,059 Volunteer Panel N=18,272)

Opinion Question <sup>^</sup>		Representative Panel (N=816)				Volunteer Panel (N=11,573)			
		Satisfied	Half-half	Dissatisfied	Mean <sup>†</sup>	Satisfied	Half-half	Dissatisfied	Mean <sup>†</sup>
Q2 How satisfied or dissatisfied are you with the government's performance in handling novel coronavirus pneumonia?	Latest	30% ▲*	16%	53% ▼*	2.3 ▲*	28% ▲*	9% ▲*	63% ▼*	2.2 ▲*
	Last	24%	15%	60%	2.2	22%	7%	68%	2.0
	Second Last	23%	16%	61%	2.2	24%	8%	68%	2.0

<sup>^</sup> Answer options included: very much satisfied, somewhat satisfied, half-half, somewhat dissatisfied, very much dissatisfied and don't know / hard to say

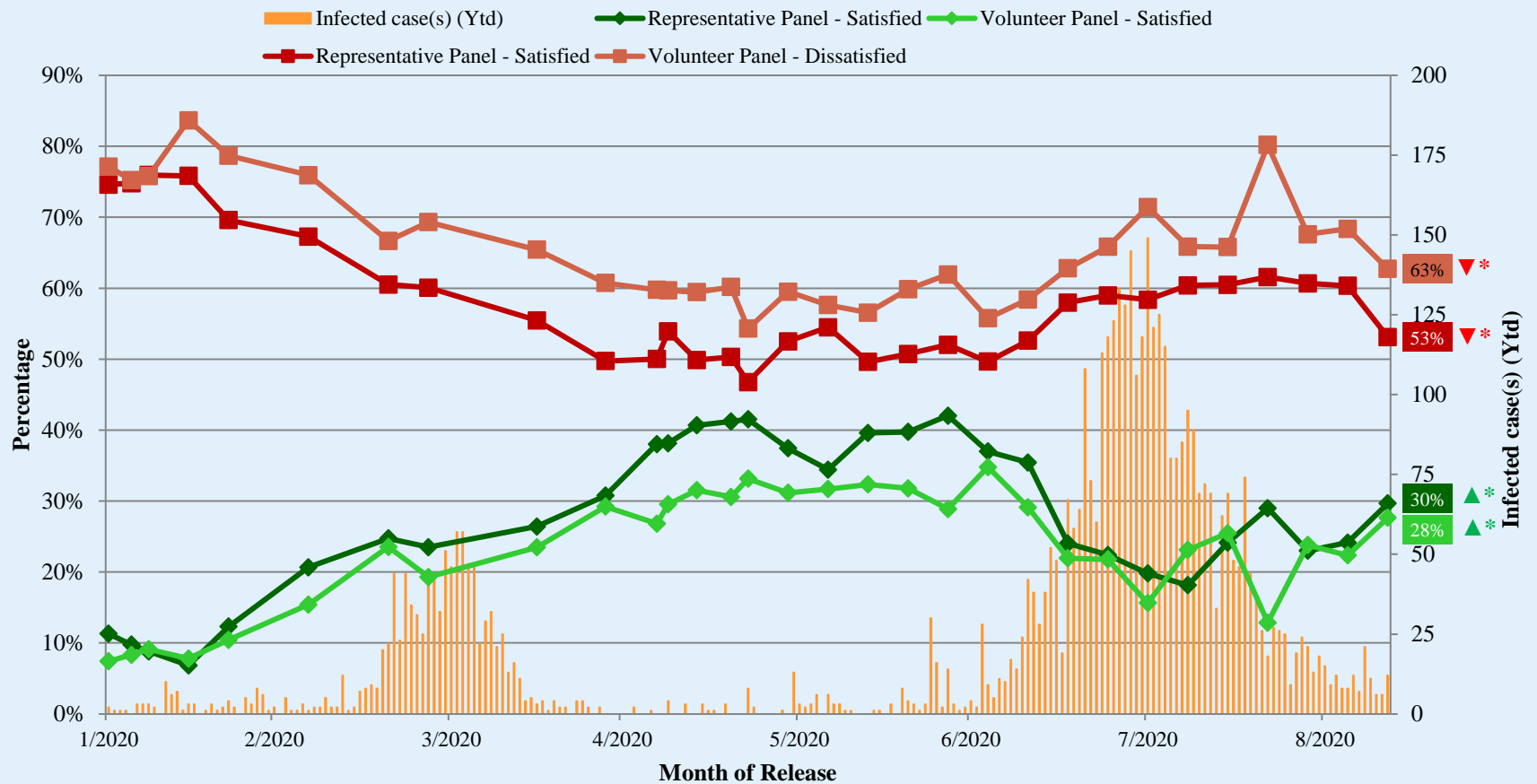
<sup>†</sup> The mean value is calculated by quantifying all individual responses into 1, 2, 3, 4, 5 marks according to their degree of positive level, where 1 is the lowest and 5 the highest, and then calculate the sample mean.

\* Significant change

# Survey Result - Community Health Module

6

## Appraisal of HK Government's performance in handling novel coronavirus pneumonia



^ Answer options included: very much satisfied, somewhat satisfied, half-half, somewhat dissatisfied, very much dissatisfied and don't know / hard to say.

\* Significant change

# POP



---

HONG KONG PUBLIC OPINION PROGRAM

HONG KONG PUBLIC OPINION RESEARCH INSTITUTE

香港民意研究所 之 香港民意研究計劃

---

**Community Democracy Project - Community Health Module**

**Post-Epidemic Normality Resumption Index (PENRI)**

**Latest Results**

**September 11, 2020**

# Contact Information - PENRI

8

	<b>HKPOP Panel</b>
Date of survey	August 31, 3pm – September 10, 3pm
Survey method	Online survey
Target population	Hong Kong residents aged 12+
Total sample size	12,415
Response rate	12.1%
Sampling error	Sampling error of percentages at +/-1% at 95% confidence level
Weighting method	The figures are rim-weighted according to 1) gender-age distribution of Hong Kong population and by District Councils population figures from Census and Statistics Department; 2) Voting results of District Councils Election from Registration and Electoral Office; 3) rating distribution of Chief Executive from regular tracking surveys.



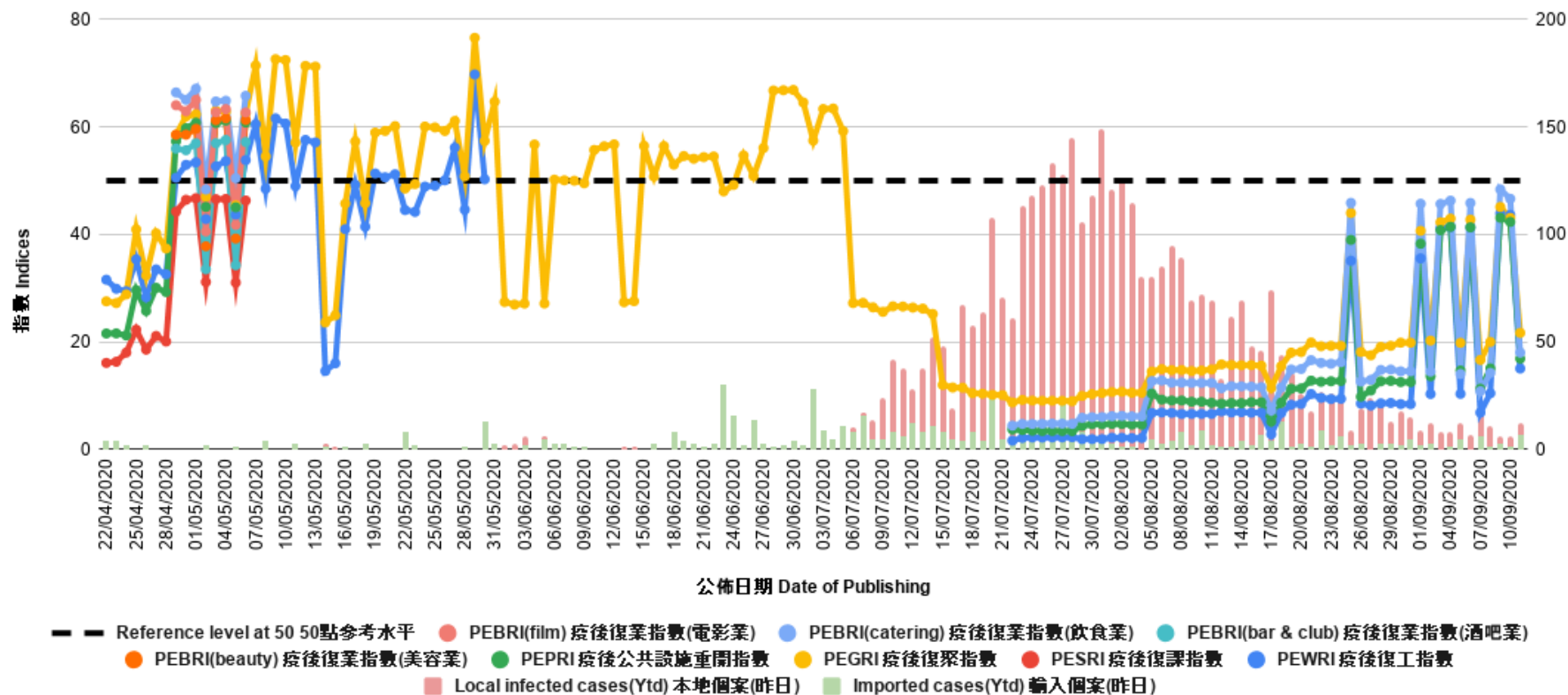
# Survey Result - PENRI

9

<b>Date of Publication</b>	<b>26/8</b>	<b>27/8</b>	<b>28/8</b>	<b>29/8</b>	<b>30/8</b>	<b>31/8</b>	<b>1/9</b>	<b>2/9</b>	<b>3/9</b>	<b>4/9</b>	<b>5/9</b>	<b>6/9</b>	<b>7/9</b>	<b>8/9</b>	<b>9/9</b>	<b>10/9</b>	<b>11/9</b>
<b>Imported Cases(Ytd)</b>	<b>3</b>	<b>0</b>	<b>3</b>	<b>3</b>	<b>2</b>	<b>5</b>	<b>2</b>	<b>3</b>	<b>0</b>	<b>1</b>	<b>5</b>	<b>0</b>	<b>6</b>	<b>1</b>	<b>3</b>	<b>1</b>	<b>7</b>
<b>Local Infection Cases(Ytd)</b>	<b>16</b>	<b>24</b>	<b>18</b>	<b>10</b>	<b>16</b>	<b>10</b>	<b>7</b>	<b>9</b>	<b>8</b>	<b>7</b>	<b>7</b>	<b>7</b>	<b>15</b>	<b>10</b>	<b>3</b>	<b>5</b>	<b>5</b>
Post-Epidemic Work Resumption Index (PEWRI)	8.5	8.2	8.6	8.7	8.5	8.4	35.6	10.3	41.1	41.4	10.4	41.3	6.9	10.5	43.9	43.6	15.1
Post-Epidemic Public-Facilities Re-open Index (PEPRI)	9.8	11.0	12.7	12.8	12.5	12.5	38.3	13.7	40.8	41.4	14.7	41.3	11.3	15.1	43.1	42.3	16.9
Post-Epidemic Gathering Resumption Index (PEGRI)	18.1	17.5	19.1	19.3	19.9	19.9	40.7	20.3	42.3	43.0	19.8	42.8	16.7	20.0	45.1	43.1	21.7
Post-Epidemic Business Resumption Index (PEBRI) (catering)	12.6	13.0	14.8	14.9	14.5	14.6	45.7	14.5	45.7	46.3	14.0	45.9	10.8	14.3	48.4	46.6	18.0

# Survey Result - PENRI

10



# POP



---

HONG KONG PUBLIC OPINION PROGRAM

HONG KONG PUBLIC OPINION RESEARCH INSTITUTE

香港民意研究所 之 香港民意研究計劃

---

**“We Hongkongers” Panel Survey**

**Latest Results**

**September 11, 2020**

# Contact Information - “We Hongkongers” Panel Survey

12

	<b>HKPOP Panel</b>
Date of survey	September 7, 3pm – September 10, 3pm
Survey method	Online survey
Target population	Hong Kong residents aged 12+
Total sample size	12,039
Response rate	11.7%
Sampling error	Sampling error of percentages at +/-1% at 95% confidence level
Weighting method	Rim-weighted according to 1) gender-age distribution, educational attainment (highest level attended) distribution, economic activity status distribution of Hong Kong population and by District Councils population figures from Census and Statistics Department; 2) Voting results of District Councils Election from Registration and Electoral Office; 3) rating distribution of Chief Executive from regular tracking surveys.

# Survey Result - “We Hongkongers” Panel Survey

- **Latest Date of survey: 7-10/9/2020**
- **Question: Recently there was a saying that there had never been “separation of powers” in Hong Kong, and that there is only an executive-led system in which the executive, legislature and judiciary perform their own duties and provide checks and balances without “separation”. How much do you support or oppose this saying, that there had never been “separation of powers” in Hong Kong?**

	Pro-democracy camp supporters (n=10,661)	Non-pro-democracy camp supporters* (n=998)	Combined^ (n=11,659)
Very much support	3%	25%	14%
Somewhat support	2%	14%	8%
Half-half	2%	11%	7%
Somewhat oppose	7%	5%	6%
Very much oppose	85%	30%	57%
Don't know / Hard to say	2%	14%	8%
Mean†	1.3	3.0	2.1

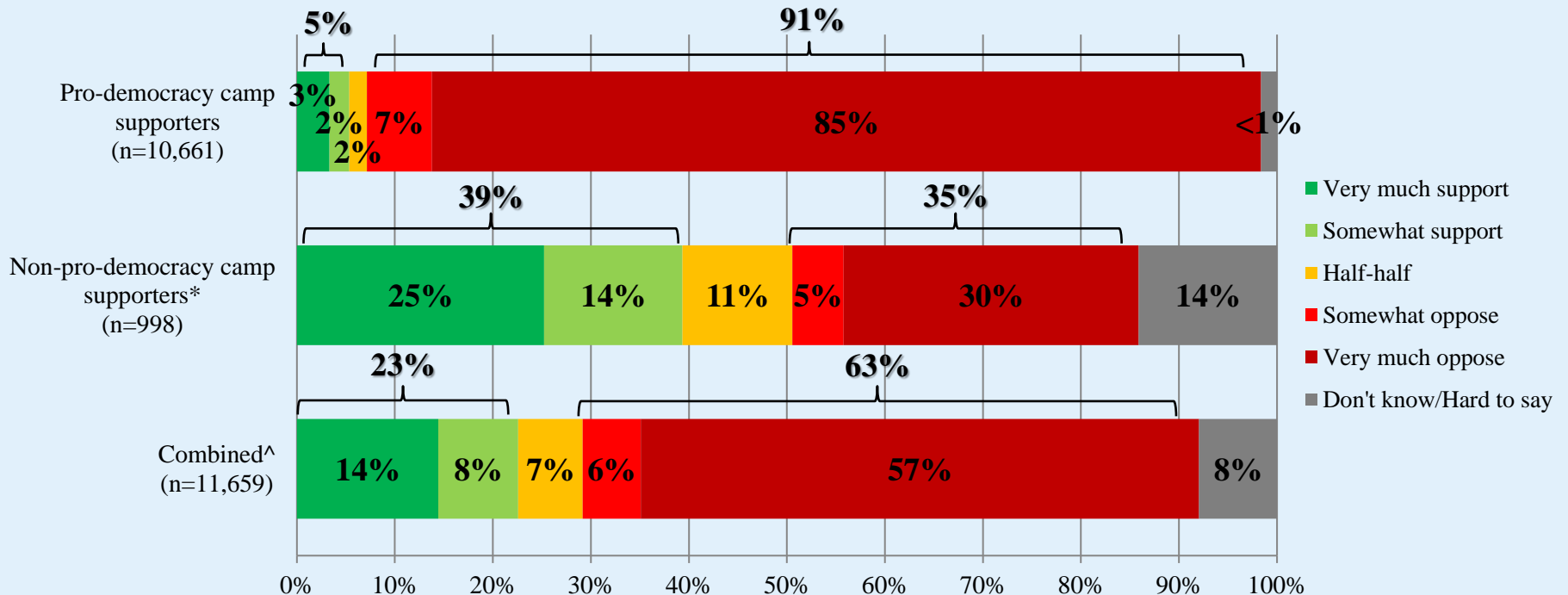
\* Include: pro-establishment camp supporters, centrist supporters, no political inclination / politically neutral / do not belong to any camp

^ The aggregated figures come from adjusting the by-group weighted figures using ratio of “pan-democratic” vs “non-pan-democratic” collected in regular tracking survey.

† The mean value is calculated by quantifying all individual responses into 1, 2, 3, 4, 5 marks according to their degree of positive level, where 1 is the lowest and 5 the highest, and then calculate the sample mean.

# Survey Result - “We Hongkongers” Panel Survey

- **Latest Date of survey: 7-10/9/2020**
- **Question: Recently there was a saying that there had never been “separation of powers” in Hong Kong, and that there is only an executive-led system in which the executive, legislature and judiciary perform their own duties and provide checks and balances without “separation”. How much do you support or oppose this saying, that there had never been “separation of powers” in Hong Kong?**



\* Include: pro-establishment camp supporters, centrist supporters, no political inclination / politically neutral / do not belong to any camp

^ The aggregated figures come from adjusting the by-group weighted figures using ratio of “pan-democratic” vs “non-pan-democratic” collected in regular tracking survey.