

POP



HONG KONG PUBLIC OPINION PROGRAM

HONG KONG PUBLIC OPINION RESEARCH INSTITUTE

香港民意研究所 之 香港民意研究計劃

Community Democracy Project -

Community Health Module

Latest Results

September 4, 2020

Contact Information - Community Health Module

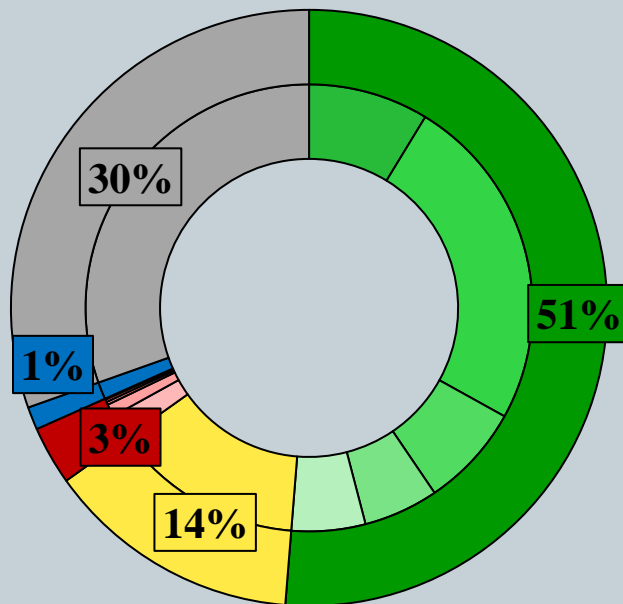
2

	HKPOP Panel	
Date of survey	August 27, 3pm – September 3, 3pm	
Survey method	Online survey	
Target population	Hong Kong residents aged 12+	
	Representative Panel	Volunteer Panel
Total sample size	969	14,119
Response rate	12.3%	14.9%
Sampling error	Sampling error of percentages at +/-3% at 95% confidence level	Sampling error of percentages at +/-1% at 95% confidence level
Weighting method	The figures are rim-weighted according to 1) gender-age distribution of Hong Kong population and by District Councils population figures from Census and Statistics Department; 2) Voting results of District Councils Election from Registration and Electoral Office; 3) rating distribution of Chief Executive from regular tracking surveys.	

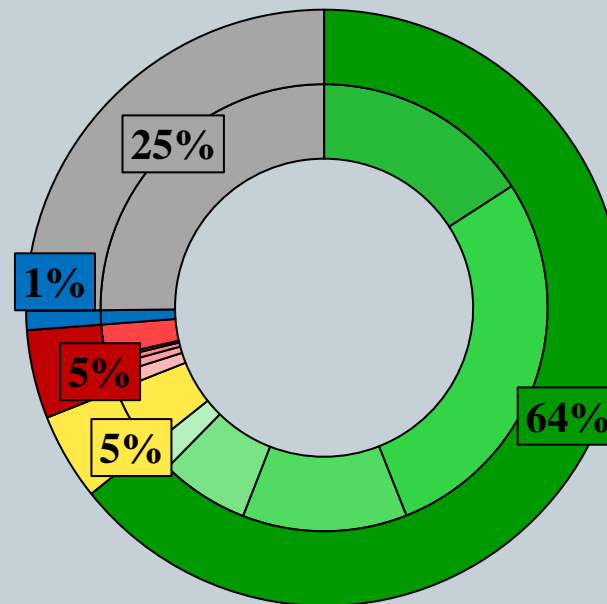
Survey Result - Community Health Module

3

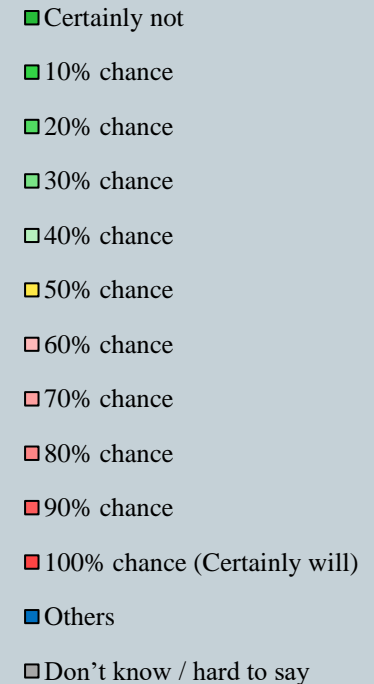
- Latest survey period: 27/8-3/9/2020
- Question: How likely do you think it is that you will contract novel coronavirus pneumonia over the next one month?



Representative Panel

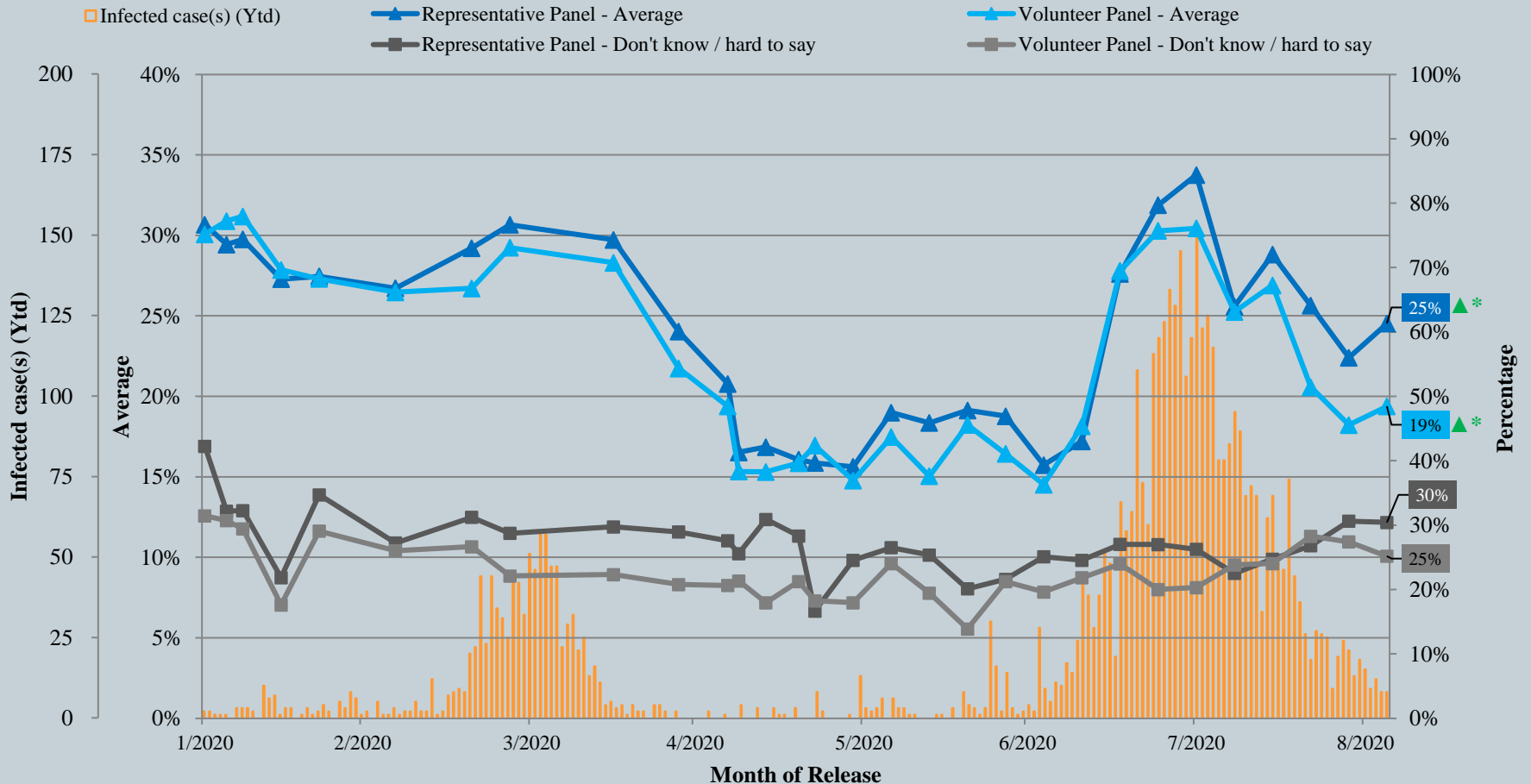


Volunteer Panel



Survey Result - Community Health Module

Assessment of the public's expected chance of COVID-19 infection



^ Answer options included: 0-10 rating scale, others and don't know / hard to say.

* Significant change

Survey Result - Community Health Module

5

- Latest survey period: 27/8-3/9/2020
- Last survey period: 20-27/8/2020 (Representative Panel N=1,059 Volunteer Panel N=18,272)
- Second last survey period: 13-20/8/2020 (Representative Panel N=1,126 Volunteer Panel N=25,945)

Opinion Question [^]		Representative Panel (N=968)				Volunteer Panel (N=14,107)			
		Satisfied	Half-half	Dissatisfied	Mean [†]	Satisfied	Half-half	Dissatisfied	Mean [†]
Q2 How satisfied or dissatisfied are you with the government's performance in handling novel coronavirus pneumonia?	Latest	24%	15%	60%	2.2	22% ▼*	7% ▼*	68%	2.0
	Last	23%	16%	61%	2.2	24%	8%	68%	2.0
	Second Last	29%	9%	62%	2.3	13%	7%	80%	1.7

[^] Answer options included: very much satisfied, somewhat satisfied, half-half, somewhat dissatisfied, very much dissatisfied and don't know / hard to say

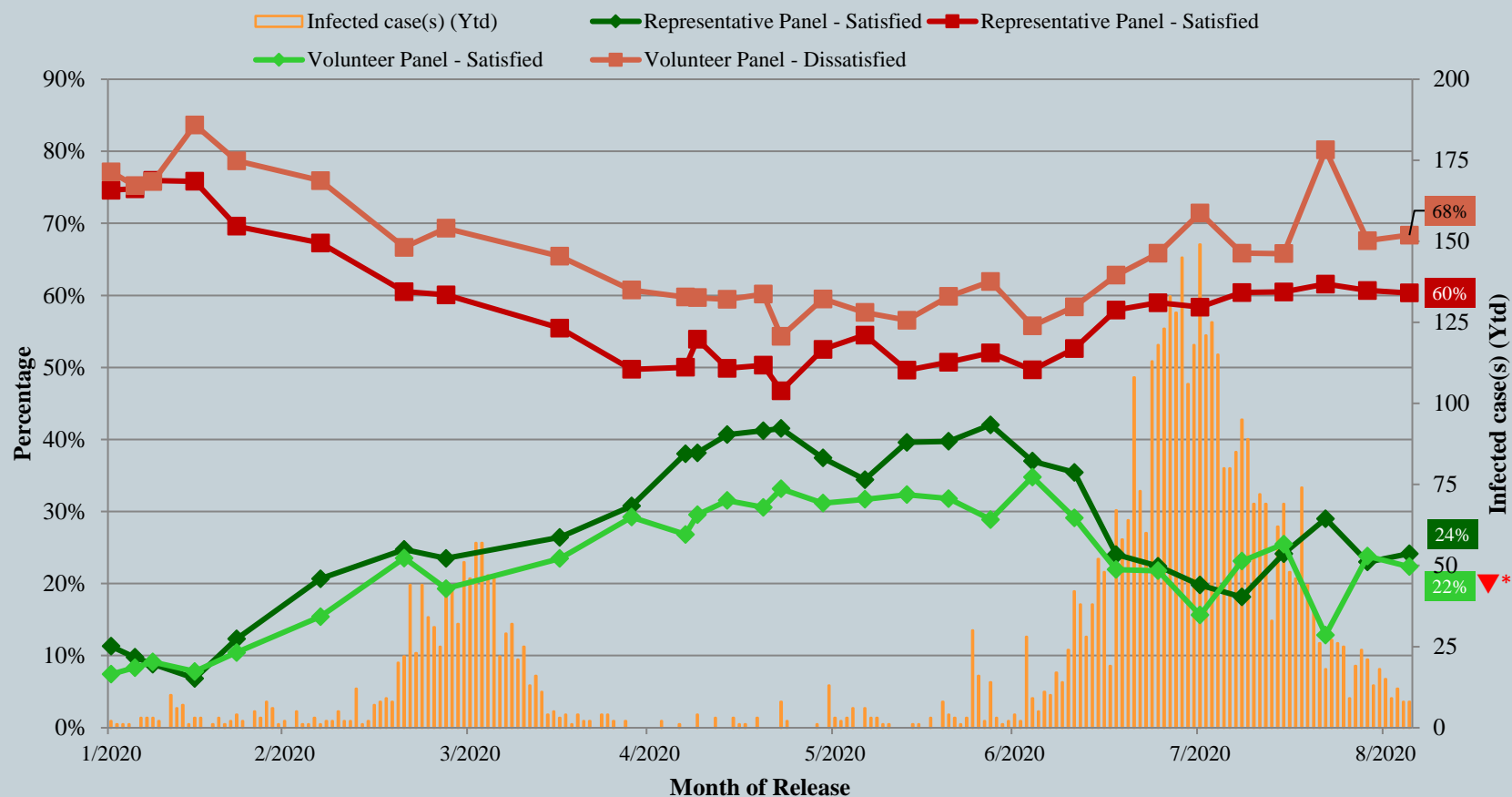
[†] The mean value is calculated by quantifying all individual responses into 1, 2, 3, 4, 5 marks according to their degree of positive level, where 1 is the lowest and 5 the highest, and then calculate the sample mean.

* Significant change

Survey Result - Community Health Module

6

Appraisal of HK Government's performance in handling novel coronavirus pneumonia



^ Answer options included: very much satisfied, somewhat satisfied, half-half, somewhat dissatisfied, very much dissatisfied and don't know / hard to say.

* Significant change

POP



HONG KONG PUBLIC OPINION PROGRAM

HONG KONG PUBLIC OPINION RESEARCH INSTITUTE

香港民意研究所 之 香港民意研究計劃

Community Democracy Project - Community Health Module

Post-Epidemic Normality Resumption Index (PENRI)

Latest Results

September 4, 2020

Contact Information - PENRI

8

	HKPOP Panel
Date of survey	August 26, 3pm – September 3, 3pm
Survey method	Online survey
Target population	Hong Kong residents aged 12+
Total sample size	14,747
Response rate	14.4%
Sampling error	Sampling error of percentages at +/-1% at 95% confidence level
Weighting method	The figures are rim-weighted according to 1) gender-age distribution of Hong Kong population and by District Councils population figures from Census and Statistics Department; 2) Voting results of District Councils Election from Registration and Electoral Office; 3) rating distribution of Chief Executive from regular tracking surveys.

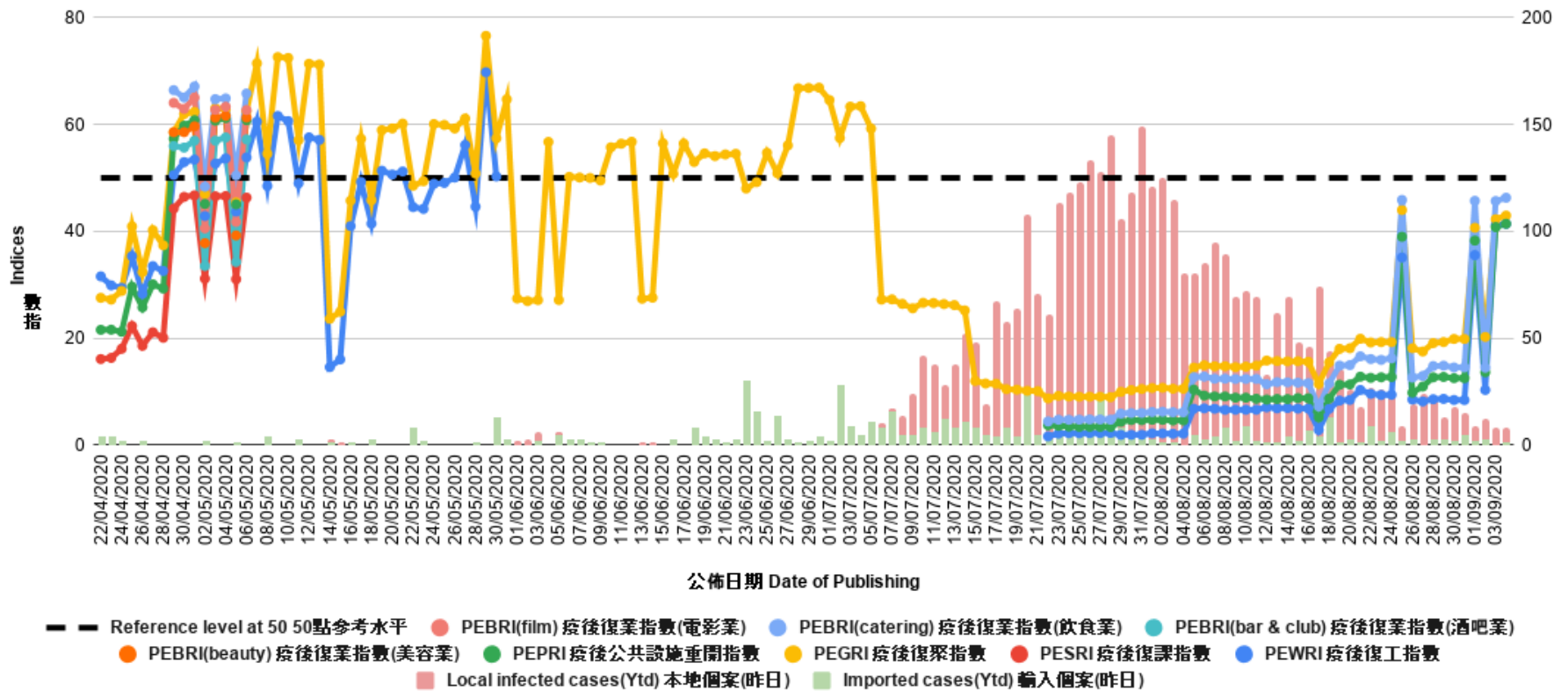
Survey Result - PENRI

9

Date of Publication	19/8	20/8	21/8	22/8	23/8	24/8	25/8	26/8	27/8	28/8	29/8	30/8	31/8	1/9	2/9	3/9	4/9
Imported Cases(Ytd)	1	3	1	9	2	6	2	3	0	3	3	2	5	2	3	0	1
Local Infection Cases(Ytd)	35	23	17	18	24	19	7	16	24	18	10	16	10	7	9	8	7
Post-Epidemic Work Resumption Index (PEWRI)	8.3	8.5	10.3	9.6	9.4	9.4	35.1	8.5	8.2	8.6	8.7	8.5	8.4	35.6	10.3	41.1	41.4
Post-Epidemic Public-Facilities Re-open Index (PEPRI)	11.3	11.4	12.8	12.6	12.7	12.8	39.0	9.8	11.0	12.7	12.8	12.5	12.5	38.3	13.7	40.8	41.4
Post-Epidemic Gathering Resumption Index (PEGRI)	18.0	18.1	19.9	19.2	19.3	19.3	44.0	18.1	17.5	19.1	19.3	19.9	19.9	40.7	20.3	42.3	43.0
Post-Epidemic Business Resumption Index (PEBRI) (catering)	14.9	15.0	16.6	16.1	16.0	16.2	45.9	12.6	13.0	14.8	14.9	14.5	14.6	45.7	14.5	45.7	46.3

Survey Result - PENRI

10



POP



HONG KONG PUBLIC OPINION PROGRAM

HONG KONG PUBLIC OPINION RESEARCH INSTITUTE

香港民意研究所 之 香港民意研究計劃

“We Hongkongers” Panel Survey

Latest Results

September 4, 2020

Contact Information - “We Hongkongers” Panel Survey

12

	HKPOP Panel
Date of survey	August 31, 3pm – September 3, 3pm
Survey method	Online survey
Target population	Hong Kong residents aged 12+
Total sample size	14,691
Response rate	14.3%
Sampling error	Sampling error of percentages at +/-1% at 95% confidence level
Weighting method	Rim-weighted according to 1) gender-age distribution, educational attainment (highest level attended) distribution, economic activity status distribution of Hong Kong population and by District Councils population figures from Census and Statistics Department; 2) Voting results of District Councils Election from Registration and Electoral Office; 3) rating distribution of Chief Executive from regular tracking surveys.

Survey Result - “We Hongkongers” Panel Survey

- **Latest Date of survey: 31/8-3/9/2020**
- **Question: Judging from the pandemic situation in Hong Kong, do you think the Legislative Council election originally scheduled on 6 September this year should be held as soon as possible?**

	Pro-democracy camp supporters (n=12,293)	Non-pro-democracy camp supporters* (n=1,254)	Combined [^] (n=13,547)
Yes, should be held within one day as usual	48%	19%	35%
Yes, but should be held in multiple days	7%	3%	5%
Yes, but doesn't matter whether it would be held within one day or in multiple days	40%	14%	28%
No	2%	55%	27%
Don't know / hard to say	2%	9%	5%

Aggregated figures for 'Yes' responses:

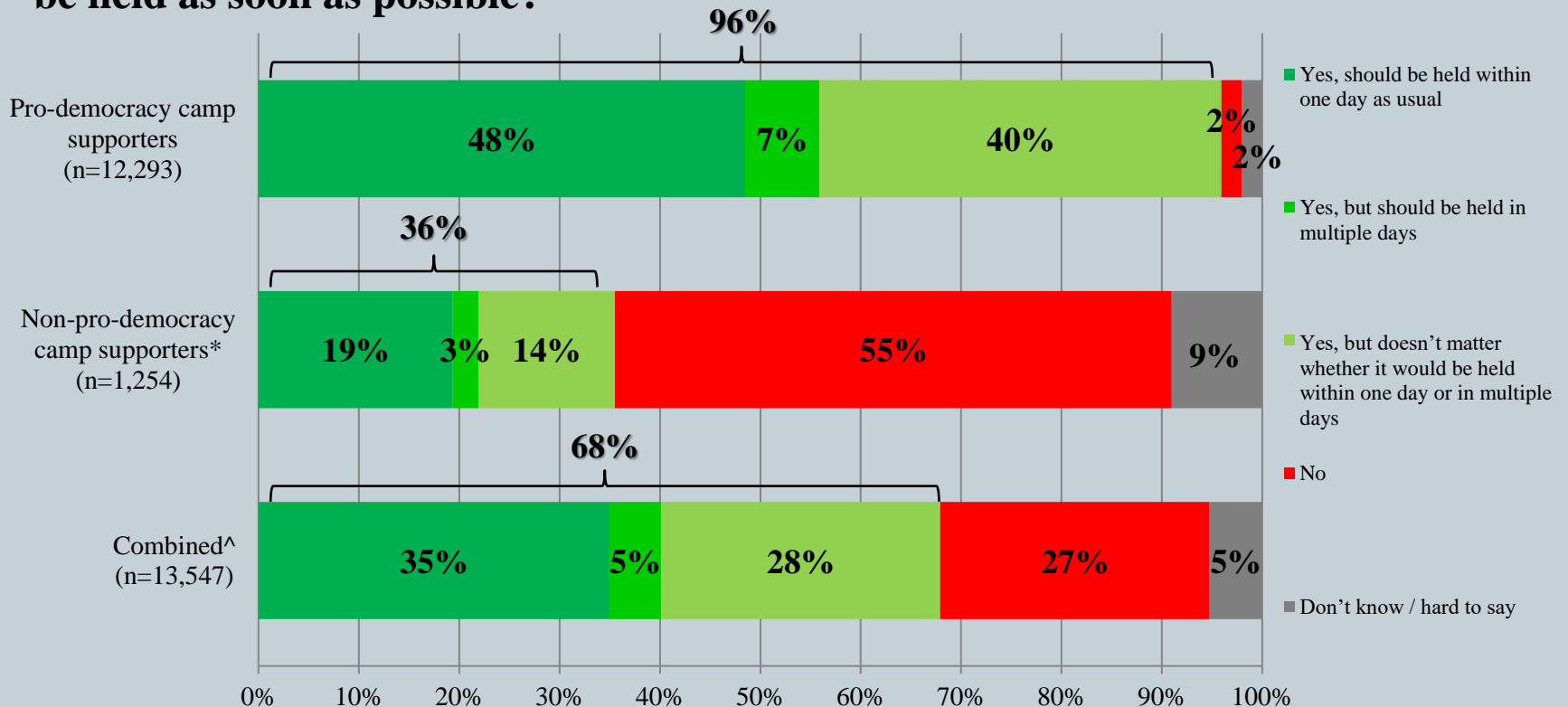
- Pro-democracy camp: 48% + 7% + 40% = **96%**
- Non-pro-democracy camp: 19% + 3% + 14% = **36%**
- Combined: 35% + 5% + 28% = **68%**

* Include: pro-establishment camp supporters, centrist supporters, no political inclination / politically neutral / do not belong to any camp

[^] The aggregated figures come from adjusting the by-group weighted figures using ratio of “pan-democratic” vs “non-pan-democratic” collected in regular tracking survey.

Survey Result - “We Hongkongers” Panel Survey

- **Latest Date of survey: 31/8-3/9/2020**
- **Question: Judging from the pandemic situation in Hong Kong, do you think the Legislative Council election originally scheduled on 6 September this year should be held as soon as possible?**



* Include: pro-establishment camp supporters, centrist supporters, no political inclination / politically neutral / do not belong to any camp

^ The aggregated figures come from adjusting the by-group weighted figures using ratio of “pan-democratic” vs “non-pan-democratic” collected in regular tracking survey.